

COORDINATES

BY COE FLOOD REDUCTION PROJECT

PI NUMBER	NORTHING	EASTING
1	3618602.61	11068092.20
8	3618558.06	11068189.68
7	3618144.12	11068721.64

NOTE:

55,440 SQ. FT. IN FLOODWAY.

MERIDIAN OF VIRGINIA STATE
PLANE COORDINATE SYSTEM
SOUTH ZONE

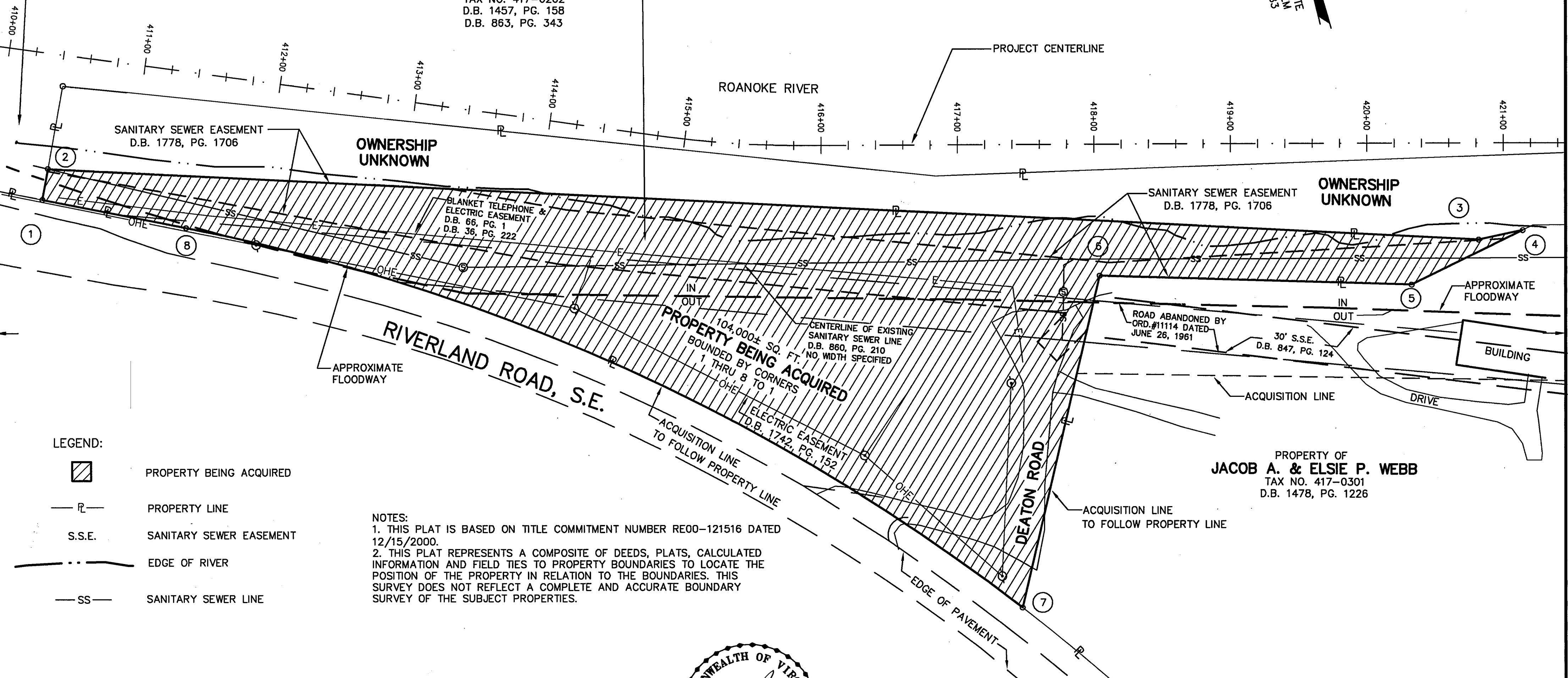
PROPERTY OF

INDUSTRIAL DEVELOPMENT
AND INVESTMENT CO.TAX NO. 417-0101
D.B. 1100, PG. 382

PROPERTY OF

INDUSTRIAL DEVELOPMENT
AND INVESTMENT CO.TAX NO. 417-0202
D.B. 1457, PG. 158
D.B. 863, PG. 343

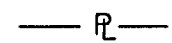
PROPERTY OF

INDUSTRIAL DEVELOPMENT
AND INVESTMENT CO.TAX NO. 417-0101
D.B. 1100, PG. 382

LEGEND:



PROPERTY BEING ACQUIRED



PROPERTY LINE

S.S.E.

SANITARY SEWER EASEMENT



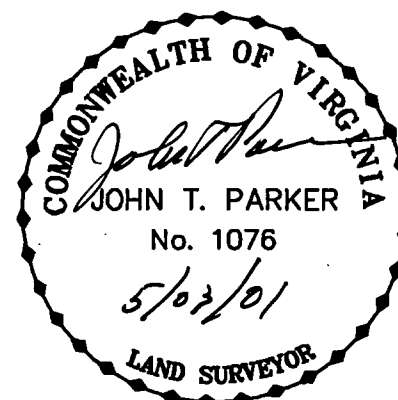
EDGE OF RIVER



SANITARY SEWER LINE

NOTES:

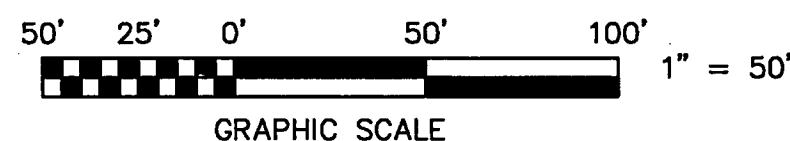
1. THIS PLAT IS BASED ON TITLE COMMITMENT NUMBER RE00-121516 DATED 12/15/2000.
2. THIS PLAT REPRESENTS A COMPOSITE OF DEEDS, PLATS, CALCULATED INFORMATION AND FIELD TIES TO PROPERTY BOUNDARIES TO LOCATE THE POSITION OF THE PROPERTY IN RELATION TO THE BOUNDARIES. THIS SURVEY DOES NOT REFLECT A COMPLETE AND ACCURATE BOUNDARY SURVEY OF THE SUBJECT PROPERTIES.



IN THE CLERK'S OFFICE OF THE CIRCUIT COURT OF THE CITY OF ROANOKE, VIRGINIA
THIS MAP WAS PRESENTED WITH THE CERTIFICATE OF ACKNOWLEDGMENT THEREBY ATTACHED
ADMITTED TO RECORD AT 2:20 O'CLOCK P.M. ON THIS 17 DAY OF July, 2001.

TESTE: ARTHUR B. CRUSH, III
CLERK

BY: *Kathleen Holladay*
DEPUTY CLERK



TPP&S T. P. PARKER & SON
ENGINEERS 816 Boulevard
SURVEYORS Post Office Box 39
PLANNERS Salem, Virginia 24153

W.O.: 98-1195

TAX # 417-0202

N.B. N/A DRAWN JTP, JR.

CALC. CHK'D JTP

CLOSED: JTP, JR.

OFFICE OF CITY ENGINEER
ROANOKE VIRGINIA

ROANOKE RIVER FLOOD REDUCTION PROJECT
SHOWING PROPERTY BEING ACQUIRED IN FEE SIMPLE BY
THE CITY OF ROANOKE
FROM

INDUSTRIAL DEVELOPMENT AND INVESTMENT CO.
THE CITY OF ROANOKE, VIRGINIA

SCALE: 1" = 50'

DATE: 2 FEBRUARY 2001

PLAN NO. 6444-014

APPROVED:

Philip C. Sullivan 5-3-01
CITY ENGINEER

REVISED: 04/11/01