

NOTES:  
1. THIS PLAT IS BASED ON TITLE COMMITMENT NUMBER RE00-101323 DATED 10/15/2000.  
2. THIS PLAT REPRESENTS A COMPOSITE OF DEEDS, PLATS, CALCULATED INFORMATION AND FIELD TIES TO PROPERTY BOUNDARIES TO LOCATE THE POSITION OF THE PROPERTY IN RELATION TO THE BOUNDARIES. THIS SURVEY DOES NOT REFLECT A COMPLETE AND ACCURATE BOUNDARY SURVEY OF THE SUBJECT PROPERTIES.

THIS IS AN ORIGINAL SIZE PLAT AND HAS NOT BEEN REDUCED.

LEGEND:

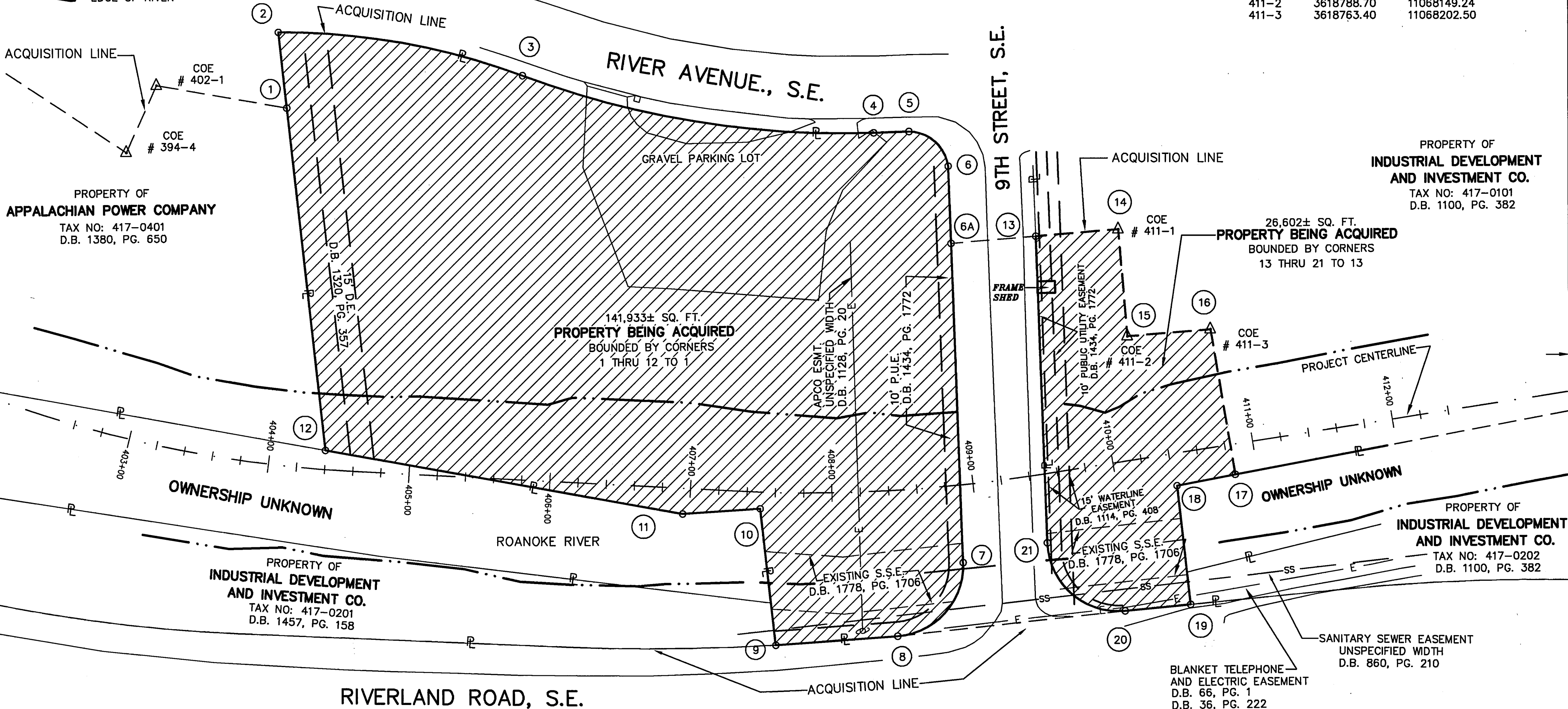
- PROPERTY BEING ACQUIRED
- PROPERTY LINE
- S.S.E. SANITARY SEWER EASEMENT
- EDGE OF RIVER

NOTE:  
PROPERTY BEING ACQUIRED LIES ENTIRELY IN FEMA FLOODWAY.

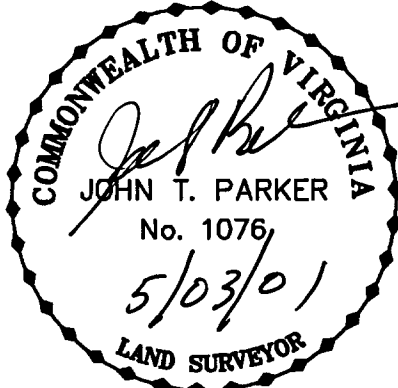
TAX NO. 417-0101  
141,933± SQ. FT. (WEST OF 9TH STREET)  
+ 26,602± SQ. FT. (EAST OF 9TH STREET)  
**168,535± SQ. FT. (NET PROPERTY BEING ACQUIRED)**

COORDINATES

BY COE FLOOD REDUCTION PROJECT		
PI NUMBER	NORTHING	EASTING
394-4	3619258.24	11067602.84
402-1	3619288.53	11067645.19
411-1	3618857.40	11068181.87
411-2	3618788.70	11068149.24
411-3	3618763.40	11068202.50

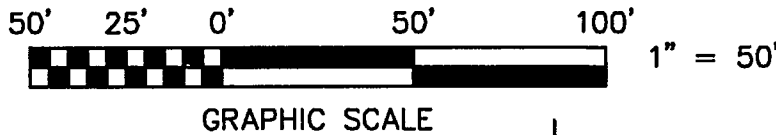


RIVERLAND ROAD, S.E.



IN THE CLERK'S OFFICE OF THE CIRCUIT COURT OF THE CITY OF ROANOKE, VIRGINIA  
THIS MAP WAS PRESENTED WITH THE CERTIFICATE OF ACKNOWLEDGMENT THERE TO ATTACHED  
ADMITTED TO RECORD AT 2:33 O'CLOCK P.M. ON THIS 19 DAY OF July, 2001.

TESTE: ARTHUR B. CRUSH, III  
CLERK  
BY: Kelly S. Colby  
DEPUTY CLERK



<b>TPP&amp;S</b> T. P. PARKER & SON ENGINEERS 816 Boulevard SURVEYORS Post Office Box 39 PLANNERS Salem, Virginia 24153 W.O.: 98-1195 TAX # 417-0101 N.B. N/A DRAWN JTP, JR. CALC. CHK'D JTP CLOSED: JTP, JR.		<b>OFFICE OF CITY ENGINEER</b> <b>ROANOKE VIRGINIA</b> ROANOKE RIVER FLOOD REDUCTION PROJECT SHOWING PROPERTY BEING ACQUIRED IN FEE SIMPLE BY <b>THE CITY OF ROANOKE</b> FROM <b>INDUSTRIAL DEVELOPMENT AND INVESTMENT CO.</b> THE CITY OF ROANOKE, VIRGINIA SCALE: 1" = 50' DATE: 24 AUGUST 2000 PLAN NO. 6444-013 APPROVED: <u>Philip C. Schirmer</u> 5-3-01 CITY ENGINEER	
---	--	--	--