

COORDINATES

BY COE FLOOD REDUCTION PROJECT		
PI NUMBER	NORTHING	EASTING
242-1	3623853.48	11058925.33
242-2	3623694.27	11059035.24
242-3	3623604.77	11059065.75
242-4	3623532.75	11059074.71
242-5	3623453.22	11059064.75
242-6	3623327.09	11059009.81





NOTE:


EASEMENT LIES ENTIRELY IN FEMA FLOODWAY.

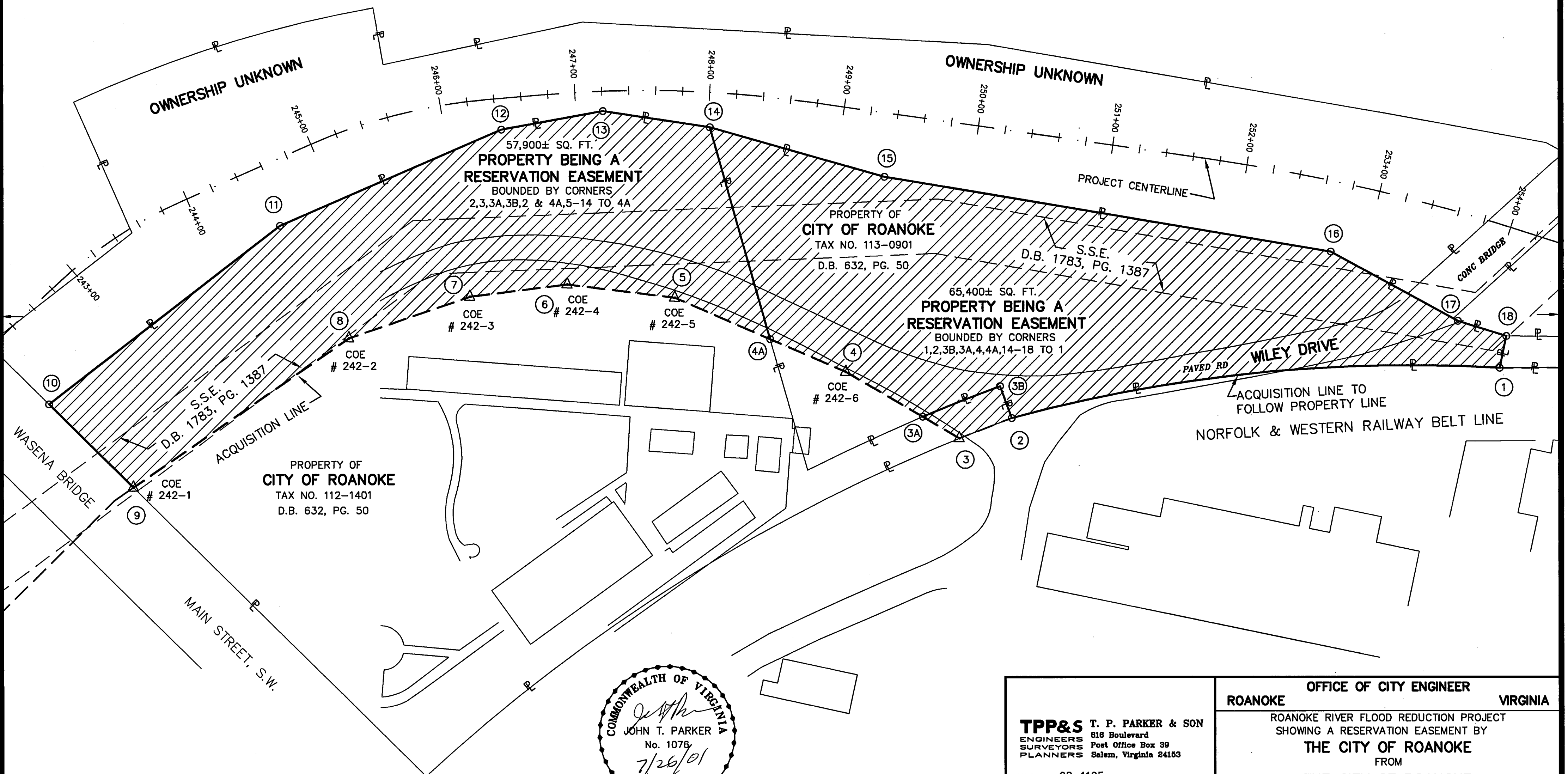
NOTES:

1. THIS PLAT IS BASED ON TITLE REPORT DATED MAY 8, 2001.
2. THIS PLAT REPRESENTS A COMPOSITE OF DEEDS, PLATS, CALCULATED INFORMATION AND FIELD TIES TO PROPERTY BOUNDARIES TO LOCATE THE POSITION OF THE PROPERTY IN RELATION TO THE BOUNDARIES. THIS SURVEY DOES NOT REFLECT A COMPLETE AND ACCURATE BOUNDARY SURVEY OF THE SUBJECT PROPERTIES.

LEGEND:

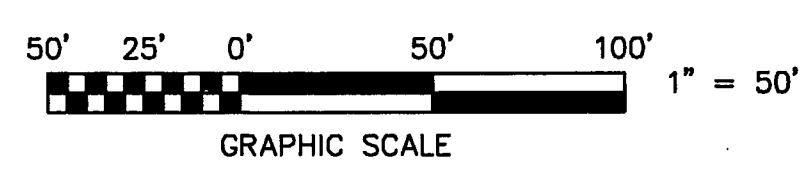
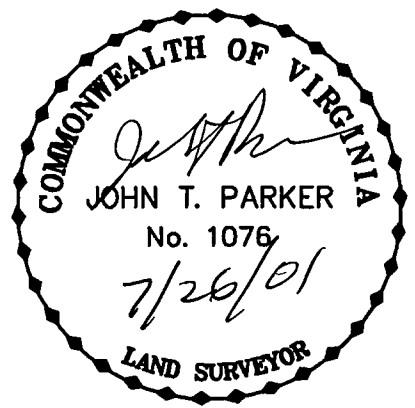
-  EASEMENT AREA
-  PROPERTY LINE
-  S.S.E. SANITARY SEWER EASEMENT
-  EDGE OF RIVER


MERIDIAN OF VIRGINIA STATE
PLANE COORDINATE SYSTEM
SOUTH ZONE NAD83



IN THE CLERK'S OFFICE OF THE CIRCUIT COURT OF THE CITY OF ROANOKE, VIRGINIA
THIS MAP WAS PRESENTED WITH THE CERTIFICATE OF ACKNOWLEDGMENT THERE TO ATTACHED
ADMITTED TO RECORD AT 3:45 O'CLOCK P.M. ON THIS 27th DAY OF July, 2001.

TESTE: ARTHUR B. CRUSH, III
CLERK
BY: [Signature]
DEPUTY CLERK



TPP&S T. P. PARKER & SON
ENGINEERS 816 Boulevard
SURVEYORS Post Office Box 39
PLANNERS Salem, Virginia 24153
W.O.: 98-1195
TAX # 112-1401, 113-0901
N.B. N/A DRAWN JTP, JR.
CALC. CHK'D JTP
CLOSED: JTP, JR.

OFFICE OF CITY ENGINEER
ROANOKE VIRGINIA
ROANOKE RIVER FLOOD REDUCTION PROJECT
SHOWING A RESERVATION EASEMENT BY
THE CITY OF ROANOKE
FROM
THE CITY OF ROANOKE
THE CITY OF ROANOKE, VIRGINIA
SCALE: 1" = 50'
DATE: 10 MAY 2001
PLAN NO. 6444-109
APPROVED: [Signature] 7/27
CITY ENGINEER

0653