

COORDINATES

BY COE FLOOD REDUCTION PROJECT
 PI NUMBER NORTHING EASTING
 328-16 3620556.67 11064128.16

NOTE:

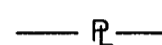
EASEMENT LIES ENTIRELY IN FEMA FLOODWAY.

THIS IS AN ORIGINAL SIZE PLAT AND HAS NOT BEEN REDUCED.

LEGEND:



EASEMENT AREA



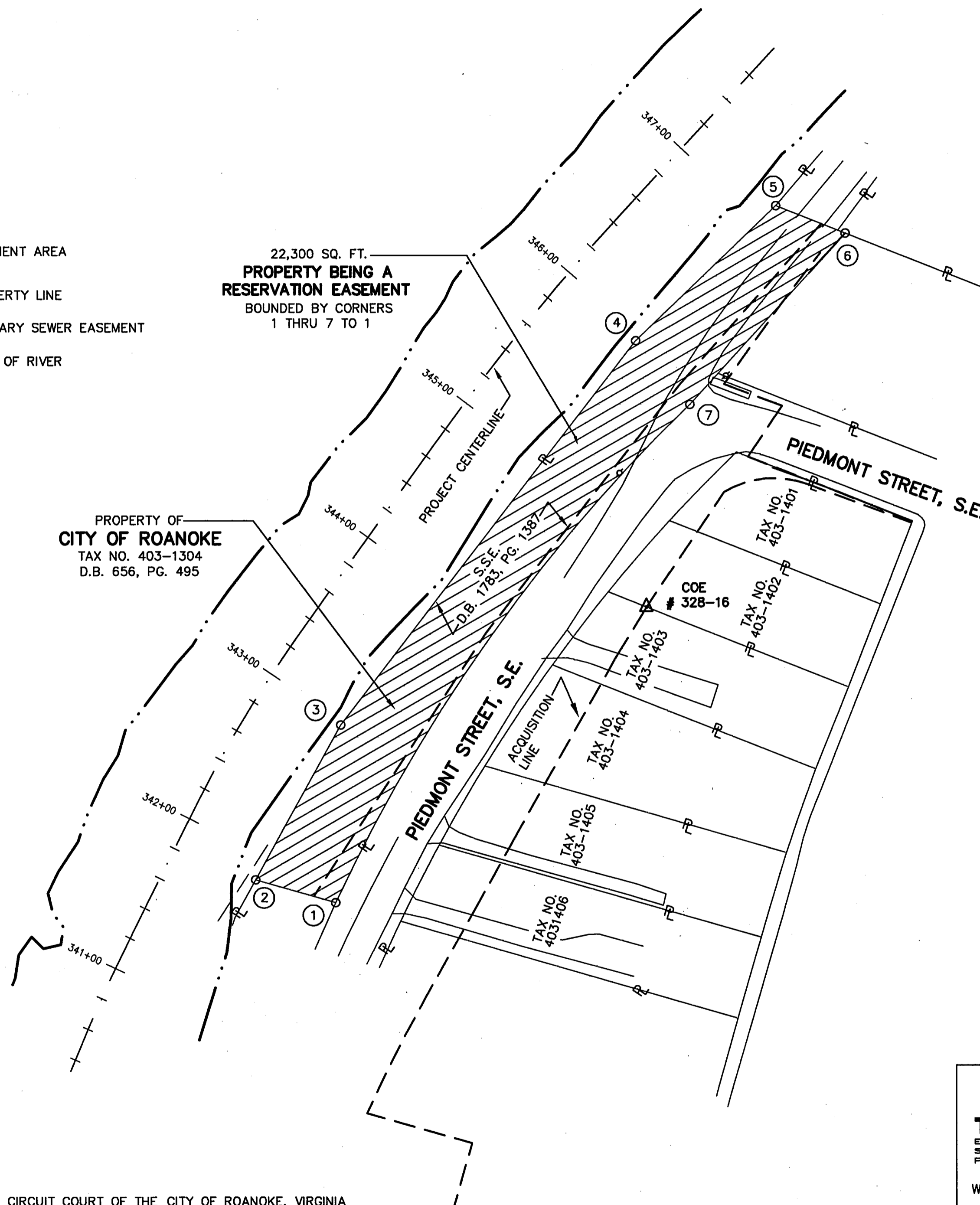
PROPERTY LINE

S.S.E.

SANITARY SEWER EASEMENT

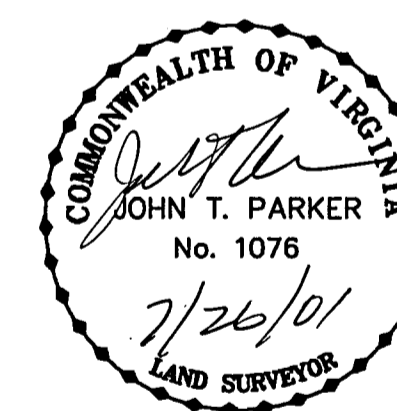


EDGE OF RIVER



NOTES:

1. THIS PLAT IS BASED ON TITLE REPORT DATED MAY 8, 2001.
2. THIS PLAT REPRESENTS A COMPOSITE OF DEEDS, PLATS, CALCULATED INFORMATION AND FIELD TIES TO PROPERTY BOUNDARIES TO LOCATE THE POSITION OF THE PROPERTY IN RELATION TO THE BOUNDARIES. THIS SURVEY DOES NOT REFLECT A COMPLETE AND ACCURATE BOUNDARY SURVEY OF THE SUBJECT PROPERTIES.

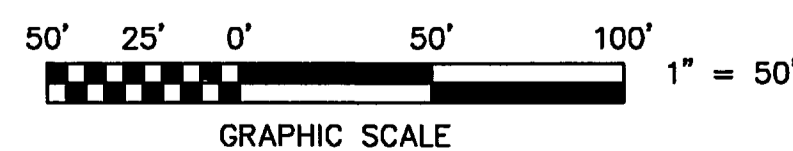


IN THE CLERK'S OFFICE OF THE CIRCUIT COURT OF THE CITY OF ROANOKE, VIRGINIA
 THIS MAP WAS PRESENTED, WITH THE CERTIFICATE OF ACKNOWLEDGMENT THERE TO ATTACHED
 ADMITTED TO RECORD AT 3:52 O'CLOCK P.M. ON THIS 22nd DAY OF JULY, 2001.

TESTE:

ARTHUR B. CRUSH, III
 CLERK

BY: [Signature]
 DEPUTY CLERK



TPP&S T. P. PARKER & SON
 ENGINEERS 816 Boulevard
 SURVEYORS Post Office Box 39
 PLANNERS Salem, Virginia 24153

W.O.: 98-1195

TAX # 403-1304

N.B. N/A DRAWN JTP, JR.

CALC. CHK'D JTP

CLOSED: JTP, JR.

ROANOKE OFFICE OF CITY ENGINEER VIRGINIA

ROANOKE RIVER FLOOD REDUCTION PROJECT
 SHOWING A RESERVATION EASEMENT BY

THE CITY OF ROANOKE
 FROM

THE CITY OF ROANOKE
 THE CITY OF ROANOKE, VIRGINIA

SCALE: 1" = 50'

DATE: 10 MAY 2001

PLAN NO. 6444-077

APPROVED:

[Signature] 7/27/01
 CITY ENGINEER