
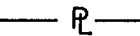



NOTE:
EASEMENT LIES ENTIRELY IN FEMA FLOODWAY.

NOTES:
1. THIS PLAT IS BASED ON TITLE REPORT DATED MAY 8, 2001.
2. THIS PLAT REPRESENTS A COMPOSITE OF DEEDS, PLATS, CALCULATED INFORMATION AND FIELD TIES TO PROPERTY BOUNDARIES TO LOCATE THE POSITION OF THE PROPERTY IN RELATION TO THE BOUNDARIES. THIS SURVEY DOES NOT REFLECT A COMPLETE AND ACCURATE BOUNDARY SURVEY OF THE SUBJECT PROPERTIES.
3. LIMITS OF ACQUISITION ARE BEYOND THE PROPERTY BOUNDARY.

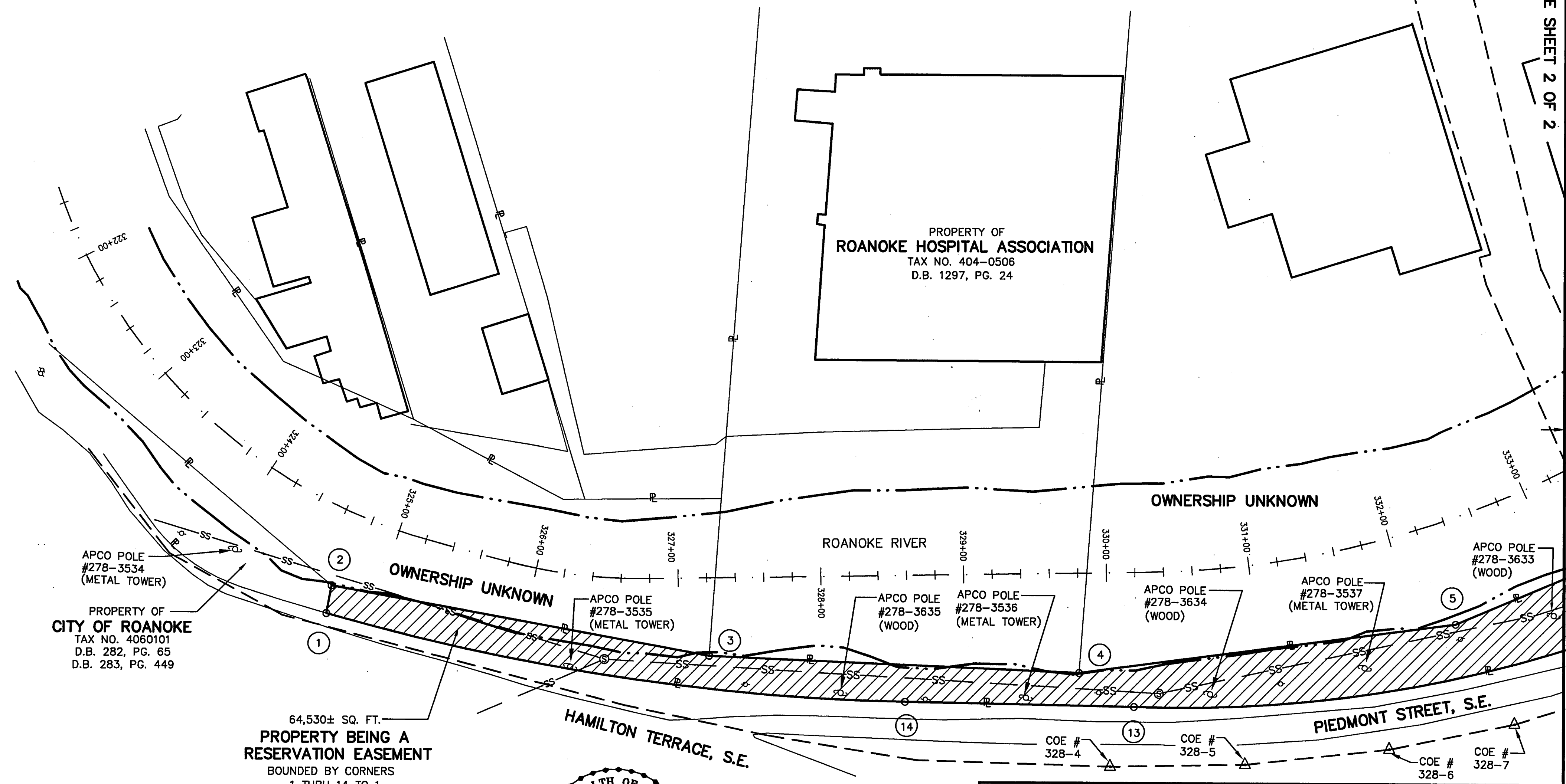
| COORDINATES | | |
|--------------------------------|------------|-------------|
| BY COE FLOOD REDUCTION PROJECT | | |
| PI NUMBER | NORTHING | EASTING |
| 328-4 | 3619211.97 | 11063758.73 |
| 328-5 | 3619297.30 | 11063799.25 |
| 328-6 | 3619392.71 | 11063834.38 |
| 328-7 | 3619479.15 | 11063857.51 |
| 328-8 | 3619617.24 | 11063879.33 |
| 328-9 | 3619727.36 | 11063882.75 |

LEGEND:

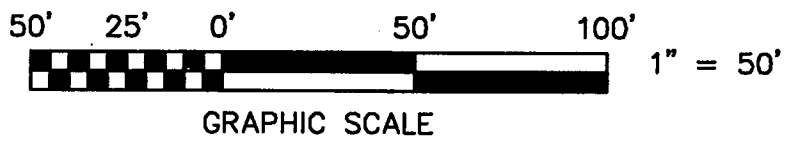
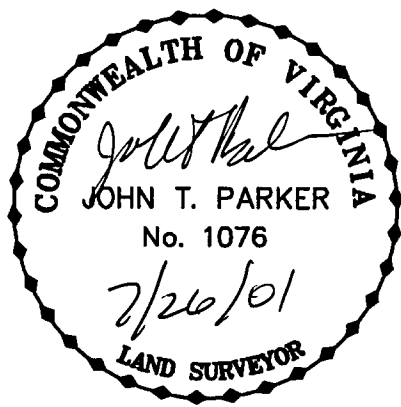
-  EASEMENT AREA
-  PROPERTY LINE
- S.S.E. SANITARY SEWER EASEMENT
-  EDGE OF RIVER

MERIDIAN OF VIRGINIA STATE
PLANE COORDINATE SYSTEM
SOUTH ZONE NAD83

MATCH LINE - SEE SHEET 2 OF 2



64,530± SQ. FT.
**PROPERTY BEING A
RESERVATION EASEMENT**
BOUNDED BY CORNERS
1 THRU 14 TO 1



IN THE CLERK'S OFFICE OF THE CIRCUIT COURT OF THE CITY OF ROANOKE, VIRGINIA
THIS MAP WAS PRESENTED WITH THE CERTIFICATE OF ACKNOWLEDGMENT THERE TO ATTACHED
ADMITTED TO RECORD AT 3:54 O'CLOCK P.M. ON THIS 22ND DAY OF JULY, 2001.

TESTE: ARTHUR B. CRUSH, III
CLERK
BY: [Signature]
DEPUTY CLERK

| | | |
|---|--|--|
| TPP&S T. P. PARKER & SON ENGINEERS 816 Boulevard SURVEYORS Post Office Box 39 PLANNERS Salem, Virginia 24153 W.O.: 98-1195 TAX # 404-0602 N.B. N/A DRAWN JTP, JR. CALC. CHK'D JTP CLOSED: JTP, JR. | OFFICE OF CITY ENGINEER ROANOKE VIRGINIA ROANOKE RIVER FLOOD REDUCTION PROJECT SHOWING A RESERVATION EASEMENT BY THE CITY OF ROANOKE FROM THE CITY OF ROANOKE THE CITY OF ROANOKE, VIRGINIA | |
| | SCALE: 1" = 50' | APPROVED: <u>[Signature]</u> 7/27/01 CITY ENGINEER |
| | DATE: 9 MAY 2001 | |
| | PLAN NO. 6444-096 | |