
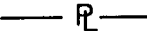


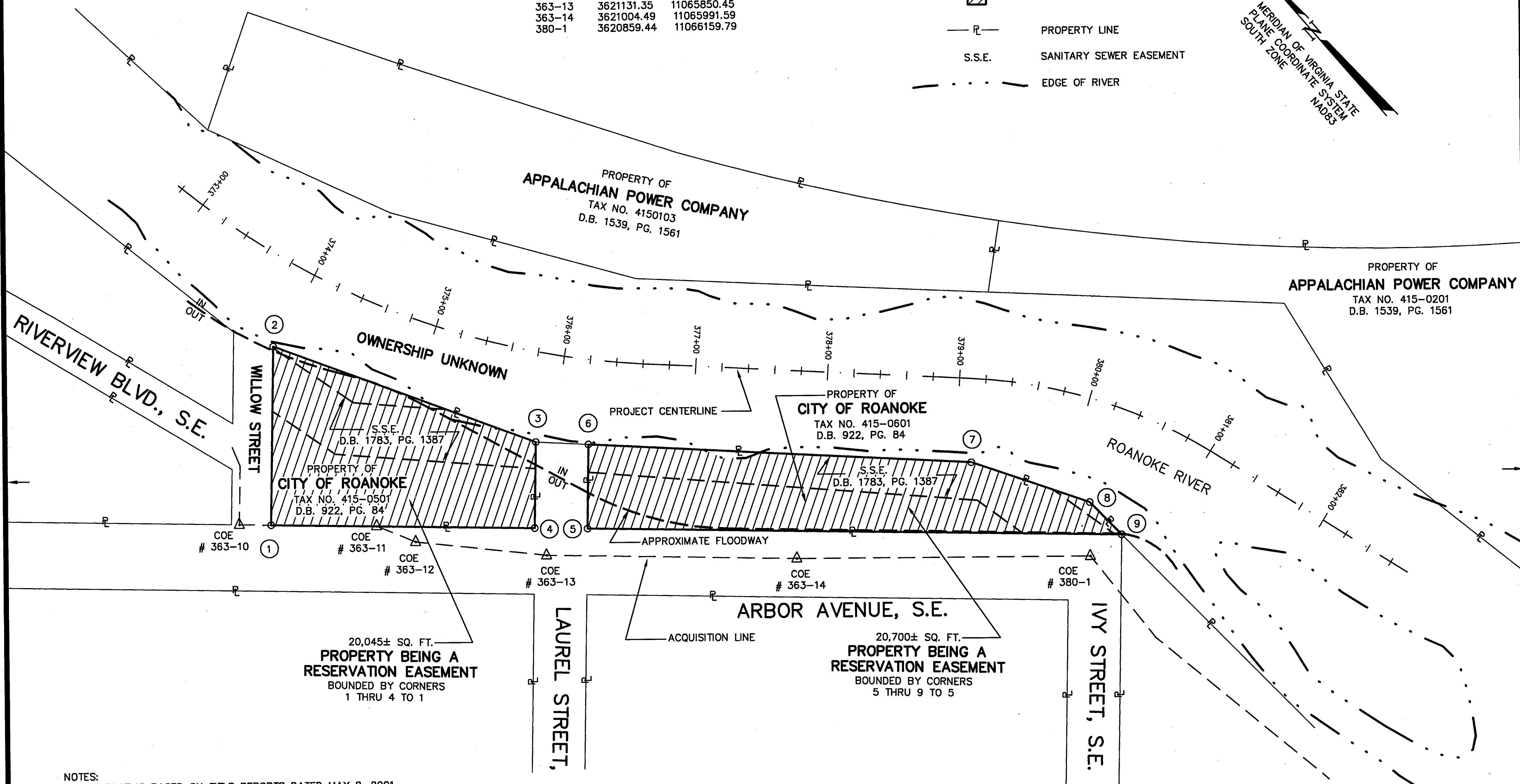
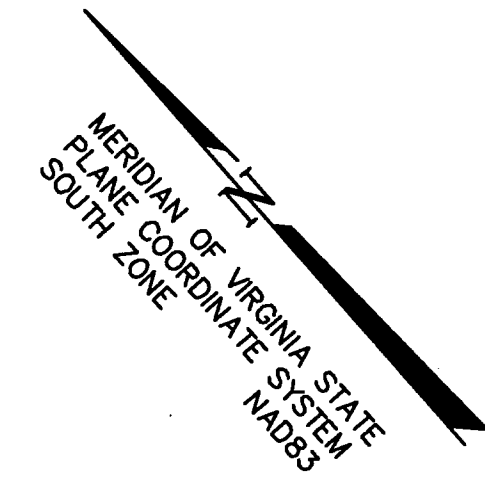


NOTE:
19,700 SQ. FT. IN FEMA FLOODWAY. (TAX NO. 415-0601)
945 SQ. FT. IN FEMA FLOODWAY. (TAX NO. 415-0501)

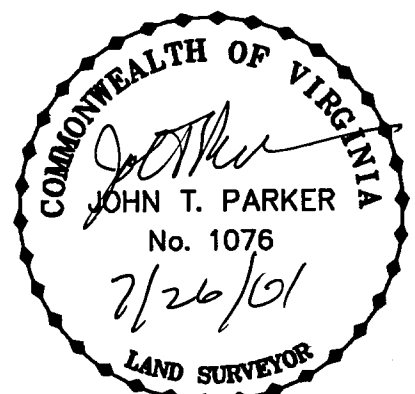
COORDINATES		
BY COE FLOOD REDUCTION PROJECT		
PI NUMBER	NORTHING	EASTING
363-10	3621302.34	11065690.33
363-11	3621232.85	11065767.87
363-12	3621204.49	11065782.36
363-13	3621131.35	11065850.45
363-14	3621004.49	11065991.59
380-1	3620859.44	11066159.79

THIS IS AN ORIGINAL SIZE PLAT AND HAS NOT BEEN REDUCED.

- LEGEND:**
-  EASEMENT AREA
 -  PROPERTY LINE
 -  S.S.E. SANITARY SEWER EASEMENT
 -  EDGE OF RIVER

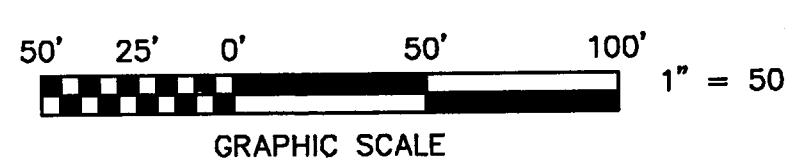


NOTES:
1. THIS PLAT IS BASED ON TITLE REPORTS DATED MAY 8, 2001.
2. THIS PLAT REPRESENTS A COMPOSITE OF DEEDS, PLATS, CALCULATED INFORMATION AND FIELD TIES TO PROPERTY BOUNDARIES TO LOCATE THE POSITION OF THE PROPERTY IN RELATION TO THE BOUNDARIES. THIS SURVEY DOES NOT REFLECT A COMPLETE AND ACCURATE BOUNDARY SURVEY OF THE SUBJECT PROPERTIES.



IN THE CLERK'S OFFICE OF THE CIRCUIT COURT OF THE CITY OF ROANOKE, VIRGINIA
THIS MAP WAS PRESENTED WITH THE CERTIFICATE OF ACKNOWLEDGMENT THERETO ATTACHED
ADMITTED TO RECORD AT 3:52 O'CLOCK P.M. ON THIS 27th DAY OF *Feb*, 2001.

TESTE: ARTHUR B. CRUSH, III
CLERK
BY: *[Signature]*
DEPUTY CLERK



TPP&S ENGINEERS SURVEYORS PLANNERS T. P. PARKER & SON 816 Boulevard Post Office Box 39 Salem, Virginia 24163 W.O.: 98-1195 TAX # 415-0601, 415-0501 N.B. N/A DRAWN JTP, JR. CALC. CHK'D JTP CLOSED: JTP, JR.	OFFICE OF CITY ENGINEER ROANOKE VIRGINIA	
	ROANOKE RIVER FLOOD REDUCTION PROJECT SHOWING A RESERVATION EASEMENT BY THE CITY OF ROANOKE FROM THE CITY OF ROANOKE THE CITY OF ROANOKE, VIRGINIA	
	SCALE: 1" = 50' DATE: 15 FEBRUARY 2001 PLAN NO. 6444-040	APPROVED: <i>[Signature]</i> 7/27/01 CITY ENGINEER
	M.B. 1 PG. 2305	