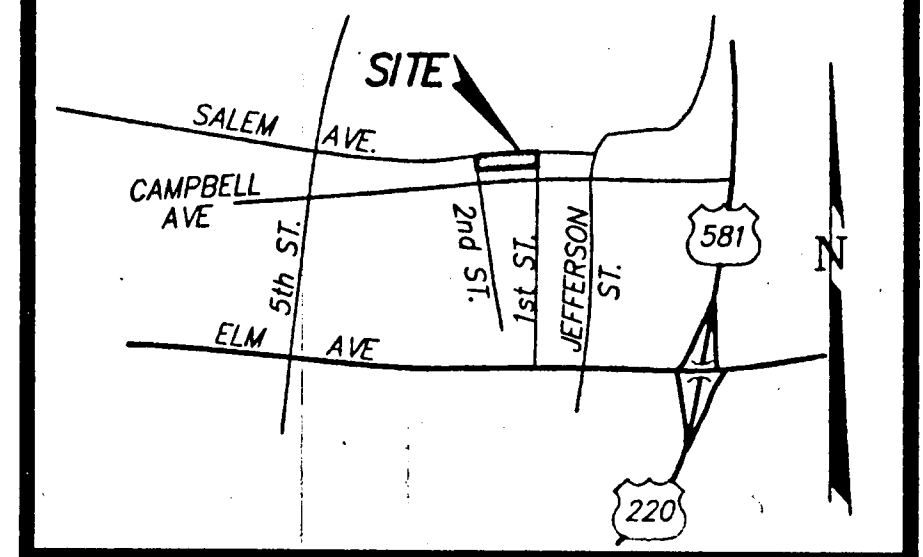
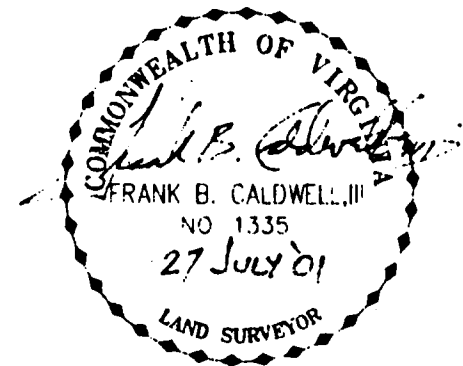
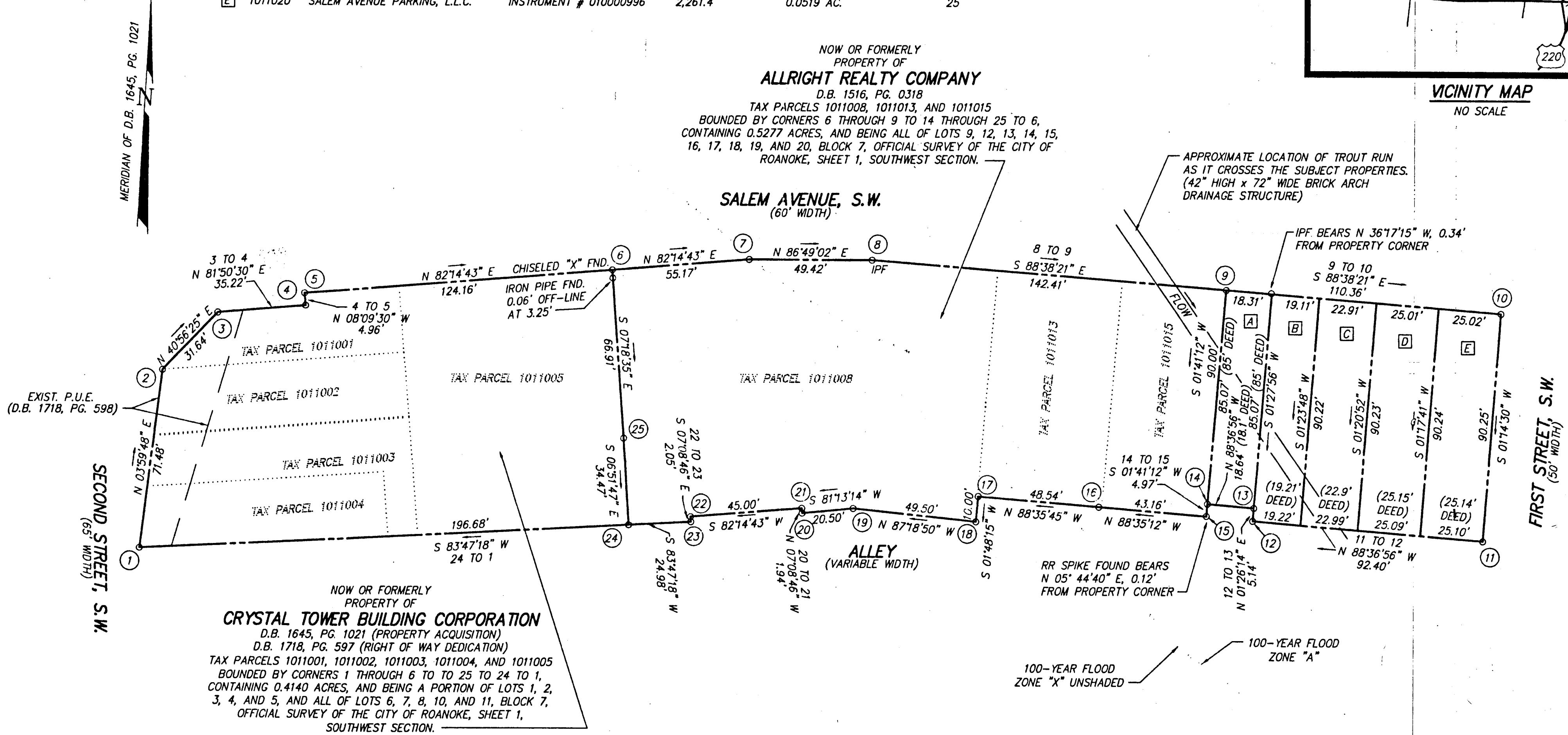


KEY	TAX NO.	OWNER OF RECORD	INSTRUMENT OF RECORD	AREA (SQ. FT.)	AREA (ACRES)	OFFICIAL SURVEY LOT NO.
A	1011016	BUSH-FLORA SHOE COMPANY, INC.	D.B. 1000, PG. 297	1,571.7	0.0361 AC.	21
B	1011017	SALEM AVENUE PARKING, L.L.C.	INSTRUMENT # 010000996	1,729.3	0.0397 AC.	22
C	1011018	SALEM AVENUE PARKING, L.L.C.	INSTRUMENT # 010000996	2,070.8	0.0475 AC.	23
D	1011019	SALEM AVENUE PARKING, L.L.C.	INSTRUMENT # 010000996	2,260.2	0.0519 AC.	24
E	1011020	SALEM AVENUE PARKING, L.L.C.	INSTRUMENT # 010000996	2,261.4	0.0519 AC.	25



VICINITY MAP
NO SCALE

NOW OR FORMERLY
PROPERTY OF
ALLRIGHT REALTY COMPANY
D.B. 1516, PG. 0318
TAX PARCELS 1011008, 1011013, AND 1011015
BOUNDED BY CORNERS 6 THROUGH 9 TO 14 THROUGH 25 TO 6,
CONTAINING 0.5277 ACRES, AND BEING ALL OF LOTS 9, 12, 13, 14, 15,
16, 17, 18, 19, AND 20, BLOCK 7, OFFICIAL SURVEY OF THE CITY OF
ROANOKE, SHEET 1, SOUTHWEST SECTION.



IN THE CLERK'S OFFICE OF THE CIRCUIT COURT OF THE CITY OF ROANOKE, VIRGINIA, THIS MAP WAS PRESENTED WITH THE CERTIFICATE OF ACKNOWLEDGMENT THERETO ATTACHED ADMITTED TO RECORD AT 4:22 O'CLOCK P.M. ON THIS 27th DAY OF July, 2001.

TESTE: ARTHUR CRUSH
CLERK
BY: *[Signature]*
DEPUTY CLERK