

NOTES:
1. THIS PLAT IS BASED ON TITLE COMMITMENT NUMBER RE00-101331 DATED 10/25/2000.
2. THIS PLAT REPRESENTS A COMPOSITE OF DEEDS, PLATS, CALCULATED INFORMATION AND FIELD TIES TO PROPERTY BOUNDARIES TO LOCATE THE POSITION OF THE PROPERTY IN RELATION TO THE BOUNDARIES. THIS SURVEY DOES NOT REFLECT A COMPLETE AND ACCURATE BOUNDARY SURVEY OF THE SUBJECT PROPERTIES.

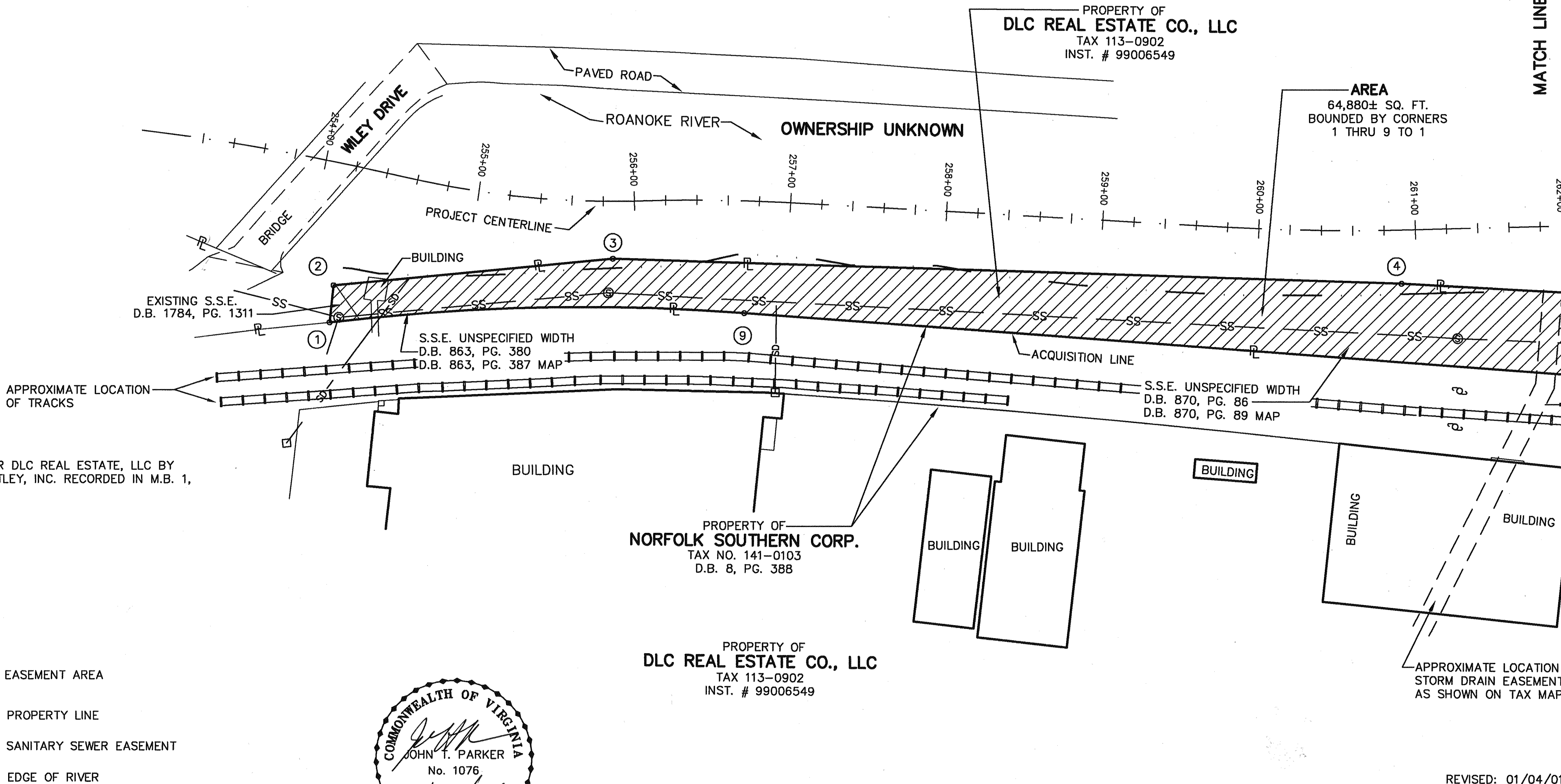
MERIDIAN OF VIRGINIA STATE
PLANE COORDINATE SYSTEM
SOUTH ZONE NAD 83

COORDINATES

PI NUMBER	NORTHING	EASTING
1	3622844.98	11059012.37
9	3622579.94	11058991.62
8	3621604.39	11058818.45
7	3621462.74	11058802.15

NOTE:
EASEMENT LIES ENTIRELY IN FEMA FLOODWAY.

MATCH LINE - SEE SHEET 2 OF 2



NOTE:
SEE SURVEY FOR DLC REAL ESTATE, LLC BY
ROBERT G. CANTLEY, INC. RECORDED IN M.B. 1,
PG. 1947.

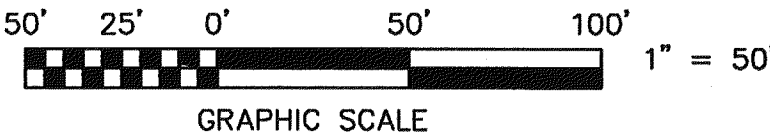
- LEGEND:
- EASEMENT AREA
 - PROPERTY LINE
 - S.S.E. SANITARY SEWER EASEMENT
 - EDGE OF RIVER



IN THE CLERK'S OFFICE OF THE CIRCUIT COURT OF THE CITY OF ROANOKE, VIRGINIA
THIS MAP WAS PRESENTED WITH THE CERTIFICATE OF ACKNOWLEDGMENT THERETO ATTACHED
ADMITTED TO RECORD AT 3:40 O'CLOCK P.M. ON THIS 27 DAY OF September, 2001.

TESTE: ARTHUR B. CRUSH, III
CLERK

BY:
DEPUTY CLERK



TPP&S ENGINEERS SURVEYORS PLANNERS T. P. PARKER & SON 816 Boulevard Post Office Box 39 Salem, Virginia 24153 W.O.: 98-1195 TAX # 113-0902 N.B. N/A DRAWN JTP, JR. CALC. CHK'D JTP CLOSED: JTP, JR.	OFFICE OF CITY ENGINEER ROANOKE VIRGINIA	
	ROANOKE RIVER FLOOD REDUCTION PROJECT SHOWING A NEW EASEMENT BEING ACQUIRED BY THE CITY OF ROANOKE FROM DLC REAL ESTATE CO. L.L.C. THE CITY OF ROANOKE, VIRGINIA	
	SCALE: 1" = 50' DATE: 24 AUGUST 2000 PLAN NO. 6444-108	APPROVED: CITY ENGINEER
	SHEET 1 OF 2 M.B. <u>1</u> PG. <u>2340</u>	