

COORDINATES

BY COE FLOOD REDUCTION PROJECT

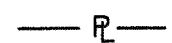
| PI NUMBER | NORTHING | EASTING |
|-----------|------------|-------------|
| 388-14 | 3618095.02 | 11069608.77 |
| 388-15 | 3618063.42 | 11069711.60 |

MERIDIAN OF VIRGINIA STATE
PLANE COORDINATE
SYSTEM
NAD83
SOUTH ZONE

NOTE:
24,800 SQ. FT. IN FLOODWAY

LEGEND:

PROPERTY BEING ACQUIRED

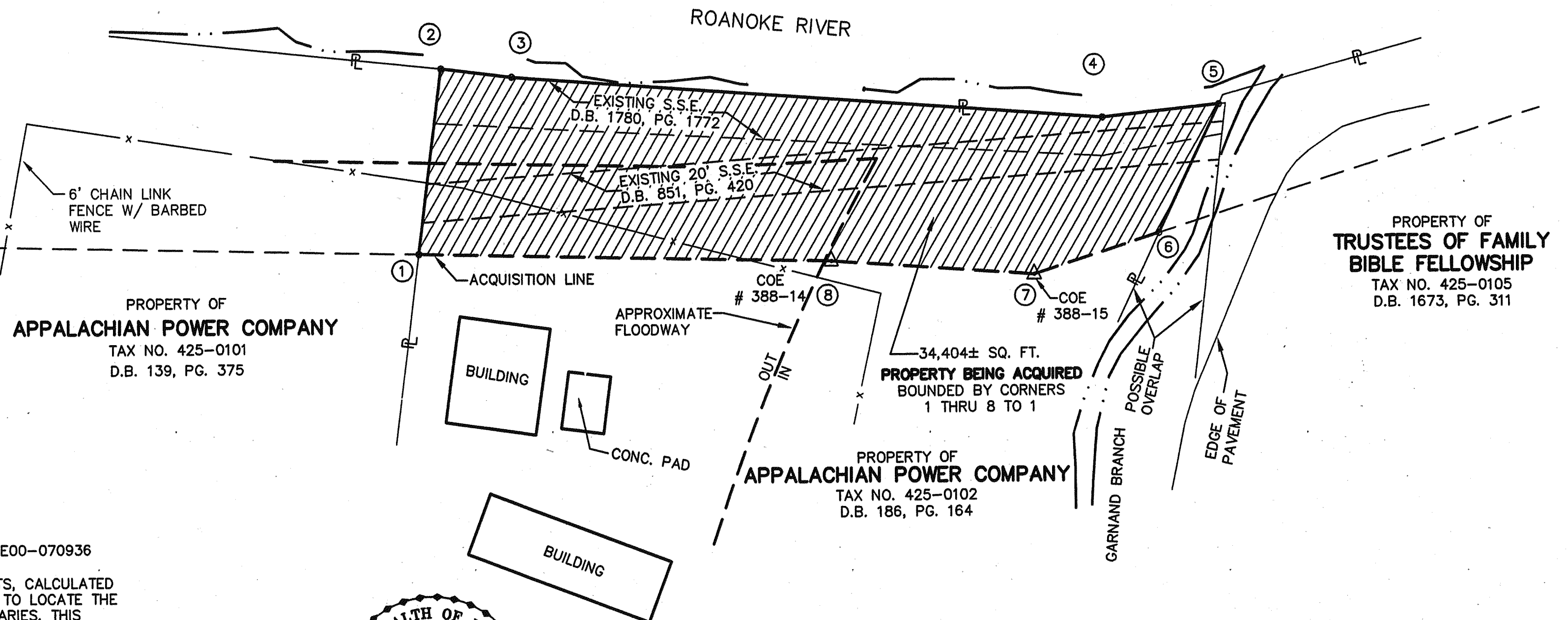


PROPERTY LINE

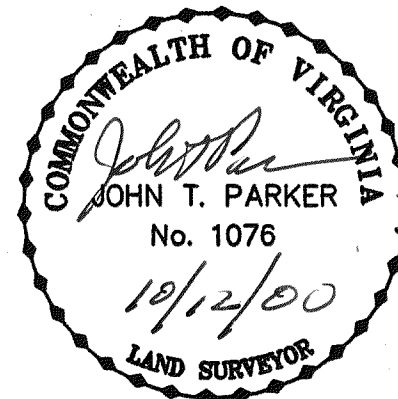
S.S.E.

SANITARY SEWER EASEMENT

EDGE OF RIVER

**NOTES:**

1. THIS PLAT IS BASED ON TITLE COMMITMENT NUMBER RE00-070936 DATED 08/01/2000.
2. THIS PLAT REPRESENTS A COMPOSITE OF DEEDS, PLATS, CALCULATED INFORMATION AND FIELD TIES TO PROPERTY BOUNDARIES TO LOCATE THE POSITION OF THE PROPERTY IN RELATION TO THE BOUNDARIES. THIS SURVEY DOES NOT REFLECT A COMPLETE AND ACCURATE BOUNDARY SURVEY OF THE SUBJECT PROPERTIES.

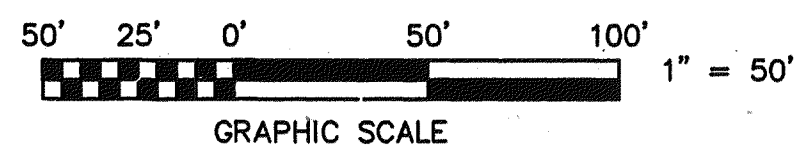


IN THE CLERK'S OFFICE OF THE CIRCUIT COURT OF THE CITY OF ROANOKE, VIRGINIA
THIS MAP WAS PRESENTED WITH THE CERTIFICATE OF ACKNOWLEDGMENT THERETO ATTACHED
ADMITTED TO RECORD AT 3:46 O'CLOCK P.M. ON THIS 20 DAY OF Dec, 2001.

TESTE:

ARTHUR B. CRUSH, III
CLERK

BY: *Arthur Taylor*
DEPUTY CLERK



TPP&S T. P. PARKER & SON
ENGINEERS 816 Boulevard
SURVEYORS Post Office Box 39
PLANNERS Salem, Virginia 24163

W.O.: 98-1195

TAX # 425-0102

N.B. N/A DRAWN JTP, JR.

CALC. CHK'D JTP

CLOSED: JTP, JR.

REVISED: 10/12/00
ROANOKE OFFICE OF CITY ENGINEER VIRGINIA

ROANOKE RIVER FLOOD REDUCTION PROJECT
SHOWING PROPERTY BEING ACQUIRED IN FEE SIMPLE BY
THE CITY OF ROANOKE
FROM

APPALACHIAN POWER COMPANY
THE CITY OF ROANOKE, VIRGINIA

SCALE: 1" = 50'

DATE: 24 AUGUST 2000

PLAN NO. 6444-010

APPROVED: *12-05-01*
CITY ENGINEER

M.B. 1 PG. 2371