

COORDINATES

PI NUMBER	NORTHING	EASTING
372-8	3620628.50	11066623.21
372-9	3620370.02	11066906.60

NOTE:

PROPERTY BEING ACQUIRED LIES ENTIRELY IN FEMA FLOODWAY.

NOTES:

1. THIS PLAT IS BASED ON TITLE REPORT DATED MAY 8, 2001.
2. THIS PLAT REPRESENTS A COMPOSITE OF DEEDS, PLATS, CALCULATED INFORMATION AND FIELD TIES TO PROPERTY BOUNDARIES TO LOCATE THE POSITION OF THE PROPERTY IN RELATION TO THE BOUNDARIES. THIS SURVEY DOES NOT REFLECT A COMPLETE AND ACCURATE BOUNDARY SURVEY OF THE SUBJECT PROPERTIES.

LEGEND:

PROPERTY BEING ACQUIRED



PROPERTY LINE

S.S.E.

SANITARY SEWER EASEMENT



EDGE OF RIVER

MERIDIAN OF VIRGINIA STATE
PLANE COORDINATE SYSTEM
SOUTH ZONE

PROPERTY OF
APPALACHIAN POWER COMPANY

TAX NO. 415-0103
D.B. 1539, PG. 1561

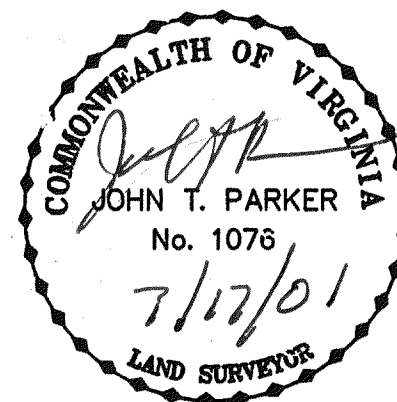
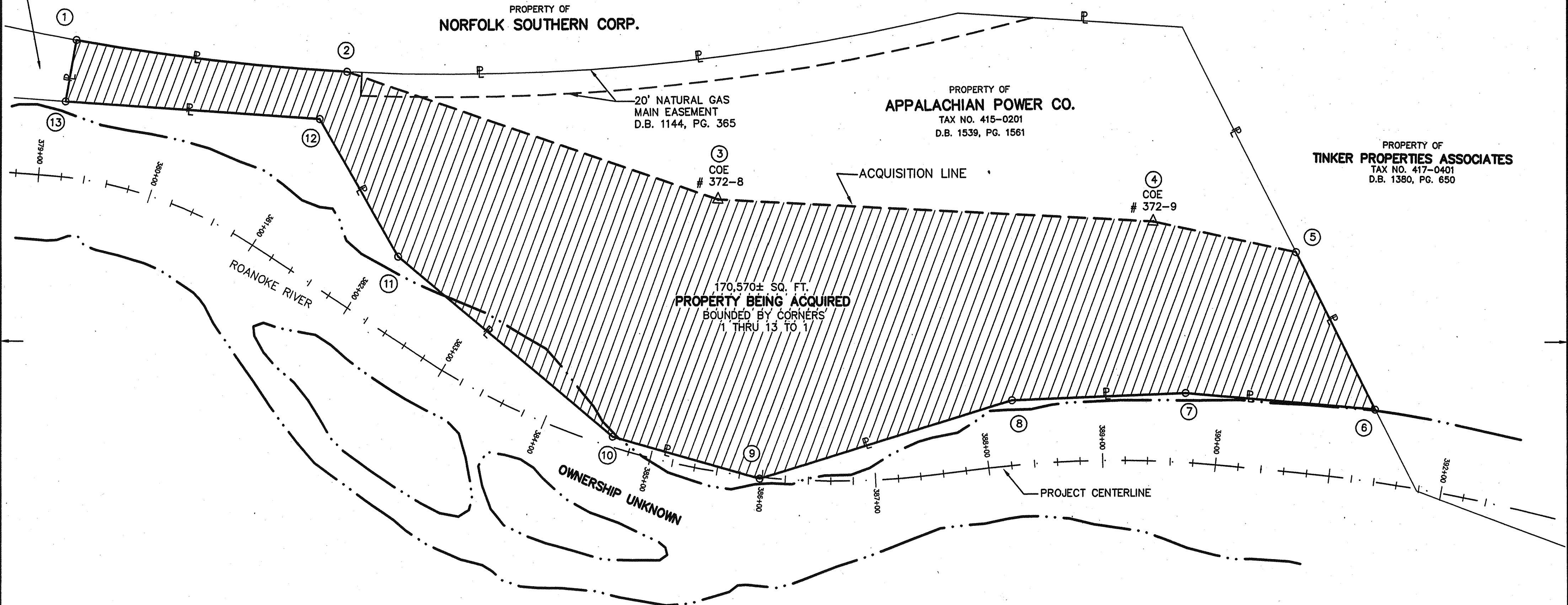
PROPERTY OF
NORFOLK SOUTHERN CORP.

PROPERTY OF
APPALACHIAN POWER CO.

TAX NO. 415-0201
D.B. 1539, PG. 1561

PROPERTY OF
TINKER PROPERTIES ASSOCIATES

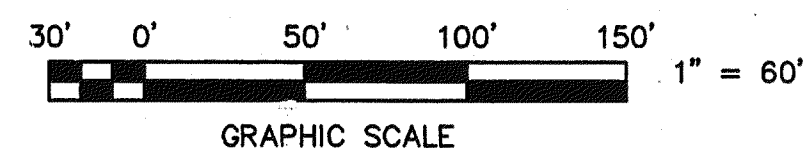
TAX NO. 417-0401
D.B. 1380, PG. 650



IN THE CLERK'S OFFICE OF THE CIRCUIT COURT OF THE CITY OF ROANOKE, VIRGINIA
THIS MAP WAS PRESENTED WITH THE CERTIFICATE OF ACKNOWLEDGMENT THERETO ATTACHED
ADMITTED TO RECORD AT 3:50 O'CLOCK P.M. ON THIS 20 DAY OF Dec, 2001.

TESTE: ARTHUR B. CRUSH, III.
CLERK

BY: [Signature]
DEPUTY CLERK



TPP&S T. P. PARKER & SON
ENGINEERS 818 Boulevard
SURVEYORS Post Office Box 39
PLANNERS Salem, Virginia 24153

W.O.: 98-1195
TAX # 415-0201
N.B. N/A DRAWN JTP, JR.
CALC. CHK'D JTP
CLOSED: JTP, JR.

ROANOKE OFFICE OF CITY ENGINEER VIRGINIA

ROANOKE RIVER FLOOD REDUCTION PROJECT
SHOWING PROPERTY BEING ACQUIRED IN FEE SIMPLE BY

THE CITY OF ROANOKE
FROM

APPALACHIAN POWER CO.

THE CITY OF ROANOKE, VIRGINIA

SCALE: 1" = 60'

DATE: 27 MARCH 2001

PLAN NO. 6444-031

APPROVED: [Signature] 12-05-01
CITY ENGINEER