

COORDINATES

BY COE	FLOOD REDUCTION PROJECT	PI NUMBER	NORTHING	EASTING
329-3	3619492.71	11063530.05		
329-4	3619663.22	11063549.58		

LEGEND:

EASEMENT AREA



PROPERTY LINE

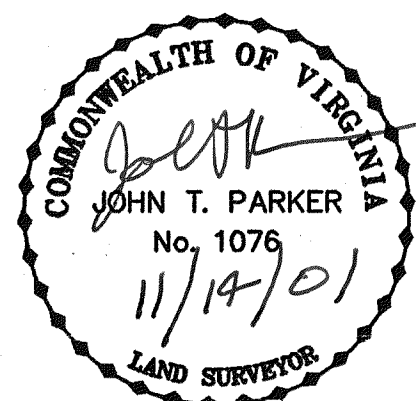
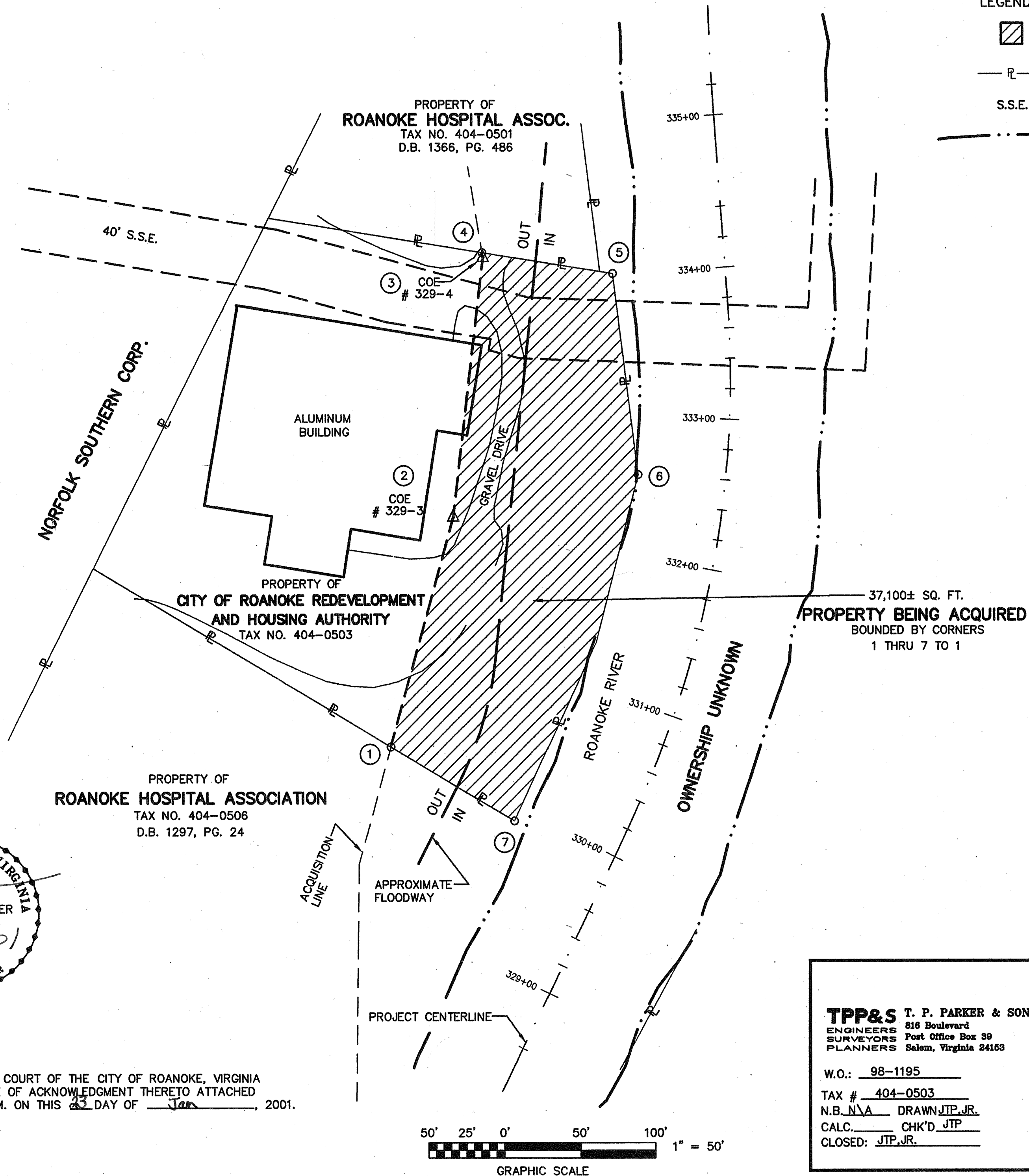
S.S.E.

SANITARY SEWER EASEMENT



EDGE OF RIVER

MERIDIAN OF VIRGINIA STATE
 PLANE COORDINATE SYSTEM
 NAD 83
 SOUTH ZONE



IN THE CLERK'S OFFICE OF THE CIRCUIT COURT OF THE CITY OF ROANOKE, VIRGINIA
 THIS MAP WAS PRESENTED WITH THE CERTIFICATE OF ACKNOWLEDGMENT THERETO ATTACHED
 ADMITTED TO RECORD AT 9:40 O'CLOCK A.M. ON THIS 23 DAY OF Jan, 2001.

TESTE: ARTHUR B. CRUSH, III

CLERK

BY: Ruth Taylor
DEPUTY CLERK

TPP&S T. P. PARKER & SON
 ENGINEERS 816 Boulevard
 SURVEYORS Post Office Box 39
 PLANNERS Salem, Virginia 24153

W.O.: 98-1195

TAX # 404-0503

N.B. N/A DRAWN JTP, JR.

CALC. CHK'D JTP

CLOSED: JTP, JR.

ROANOKE OFFICE OF CITY ENGINEER VIRGINIA

ROANOKE RIVER FLOOD REDUCTION PROJECT
 SHOWING PROPERTY BEING ACQUIRED IN FEE SIMPLE BY
THE CITY OF ROANOKE
 FROM
**CITY OF ROANOKE REDEVELOPMENT AND
 HOUSING AUTHORITY**
 THE CITY OF ROANOKE, VIRGINIA

SCALE: 1" = 50'

DATE: 6 APRIL 2001

PLAN NO. 6444-097

APPROVED:

CITY ENGINEER