

NOTE:
EASEMENT DOES NOT LIE IN FEMA FLOODWAY.

THIS IS AN ORIGINAL SIZE PLAT AND HAS NOT BEEN REDUCED.

M.B. 1 PG. 2392


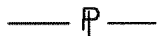

COORDINATES

BY COE FLOOD REDUCTION PROJECT

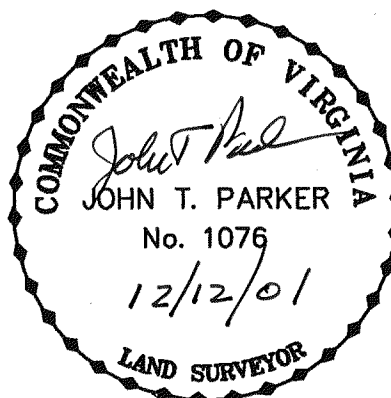
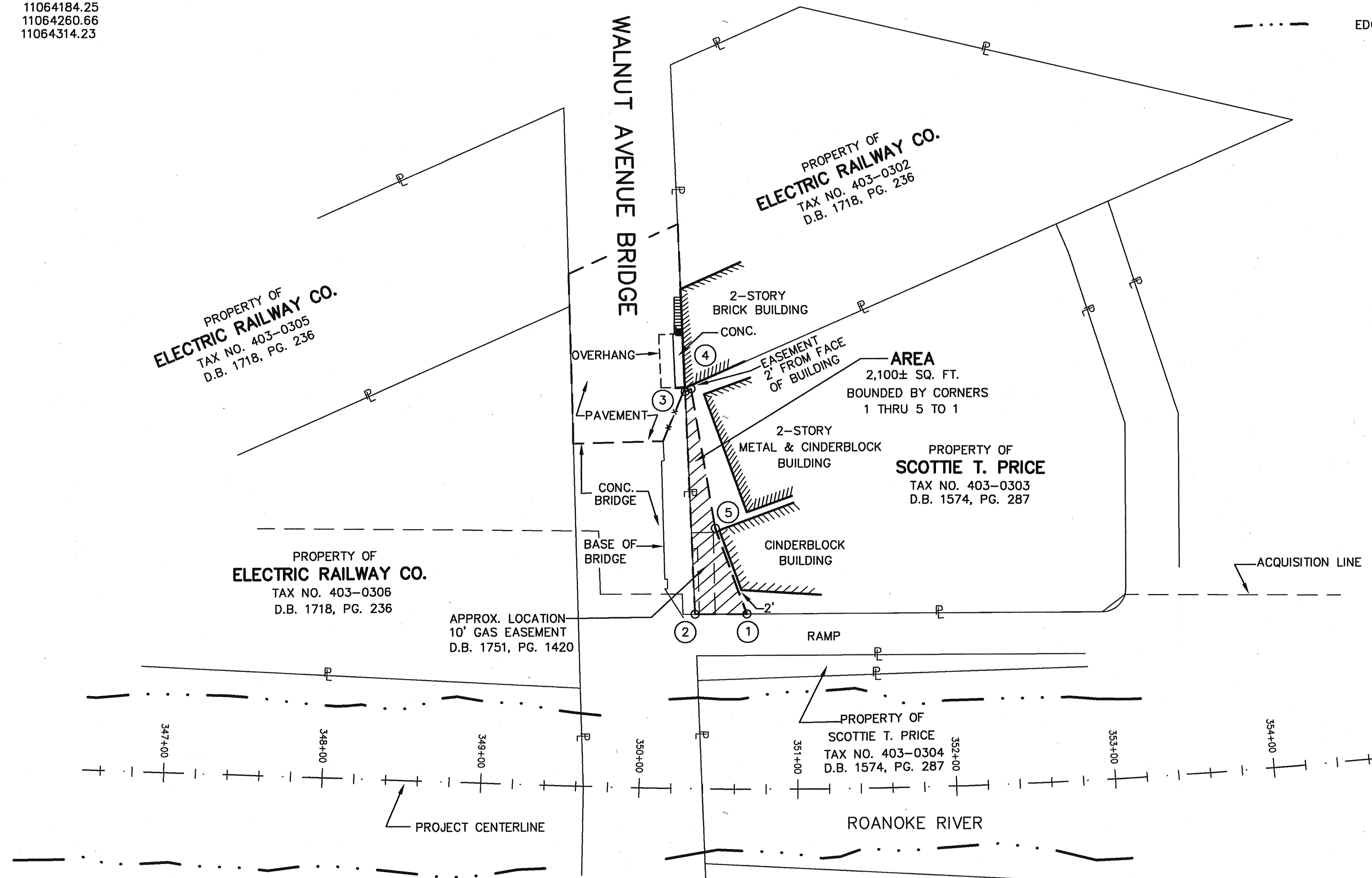
PI NUMBER	NORTHING	EASTING
1	3621174.52	11064314.23
2	3621149.79	11064293.04
3	3621236.84	11064183.05
4	3621240.74	11064184.25
5	3621194.67	11064260.66
1	3621174.52	11064314.23

NOTES:
1. THIS PLAT IS BASED ON TITLE REPORT DATED SEPTEMBER 10, 2001.
2. THIS PLAT REPRESENTS A COMPOSITE OF DEEDS, PLATS, CALCULATED INFORMATION AND FIELD TIES TO PROPERTY BOUNDARIES TO LOCATE THE POSITION OF THE PROPERTY IN RELATION TO THE BOUNDARIES. THIS SURVEY DOES NOT REFLECT A COMPLETE AND ACCURATE BOUNDARY SURVEY OF THE SUBJECT PROPERTIES.

LEGEND:

-  EASEMENT AREA
-  PROPERTY LINE
-  EDGE OF RIVER

MERIDIAN OF VIRGINIA STATE
PLANE COORDINATE SYSTEM
SOUTH ZONE
NAD83



IN THE CLERK'S OFFICE OF THE CIRCUIT COURT OF THE CITY OF ROANOKE, VIRGINIA
THIS MAP WAS PRESENTED WITH THE CERTIFICATE OF ACKNOWLEDGMENT THERE TO ATTACHED
ADMITTED TO RECORD AT 11:47 O'CLOCK A.M. ON THIS 12 DAY OF February, 2002

TESTE: ARTHUR B. CRUSH, III
CLERK

BY: [Signature]
DEPUTY CLERK

50' 25' 0' 50' 100'
1" = 50'
GRAPHIC SCALE

TPP&S T. P. PARKER & SON
ENGINEERS 816 Boulevard
SURVEYORS Post Office Box 39
PLANNERS Salem, Virginia 24153

W.O.: 98-1195
TAX # 403-0303
N.B. N/A DRAWN JTP, JR.
CALC. CHK'D JTP
CLOSED: JTP, JR.

OFFICE OF CITY ENGINEER
ROANOKE VIRGINIA

ROANOKE RIVER FLOOD REDUCTION PROJECT
SHOWING A NEW EASEMENT BEING ACQUIRED BY

THE CITY OF ROANOKE
FROM

SCOTTIE T. PRICE

THE CITY OF ROANOKE, VIRGINIA

SCALE: 1" = 50'

DATE: 3 OCTOBER 2001

PLAN NO. 6444-66A

APPROVED:

[Signature] 12/12/01
CITY ENGINEER

M.B. 1 PG. 2392

0662