

# COORDINATES

| PI NUMBER | NORTHING   | EASTING     |
|-----------|------------|-------------|
| 372-10    | 3620022.13 | 11067182.12 |
| 394-1     | 3619930.71 | 11067256.27 |
| 394-2     | 3619823.31 | 11067317.89 |
| 394-3     | 3619644.19 | 11067411.53 |
| 6         | 3619590.79 | 11067427.01 |
| 7         | 3619525.96 | 11067470.13 |
| 394-4     | 3619258.24 | 11067602.84 |
| 402-1     | 3619288.53 | 11067645.19 |

## NOTE:

EASEMENT LIES ENTIRELY IN FEMA FLOODWAY.


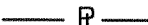


## NOTES:

1. THIS PLAT IS BASED ON TITLE REPORT DATED JULY 9, 2001.
2. THIS PLAT REPRESENTS A COMPOSITE OF DEEDS, PLATS, CALCULATED INFORMATION AND FIELD TIES TO PROPERTY BOUNDARIES TO LOCATE THE POSITION OF THE EASEMENT IN RELATION TO THE BOUNDARIES. THIS SURVEY DOES NOT REFLECT A COMPLETE AND ACCURATE BOUNDARY SURVEY OF THE SUBJECT PROPERTIES.

THIS IS AN ORIGINAL SIZE PLAT AND HAS NOT BEEN REDUCED.

M.B. 1 PG. 2399

## LEGEND:

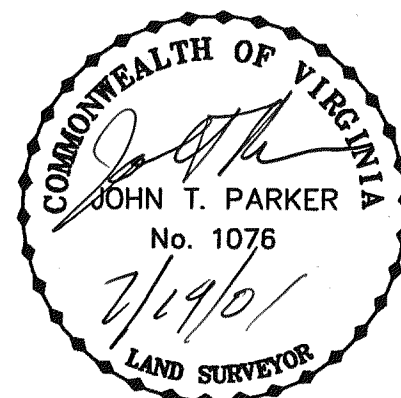
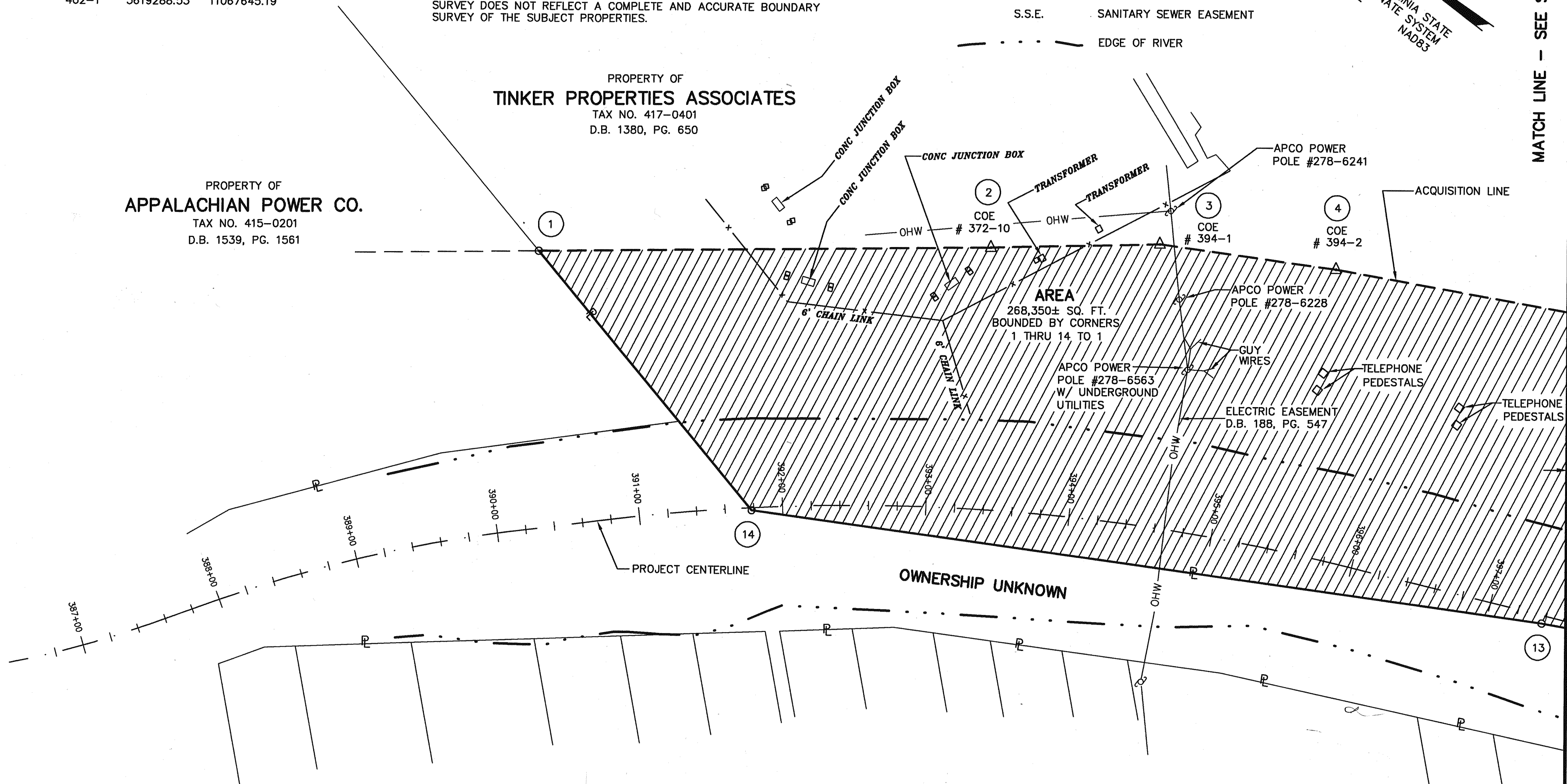
-  EASEMENT AREA
-  PROPERTY LINE
-  S.S.E. SANITARY SEWER EASEMENT
-  EDGE OF RIVER

MERIDIAN OF VIRGINIA STATE  
PLANE COORDINATE SYSTEM  
NAD83

MATCH LINE - SEE SHEET 2 OF 2

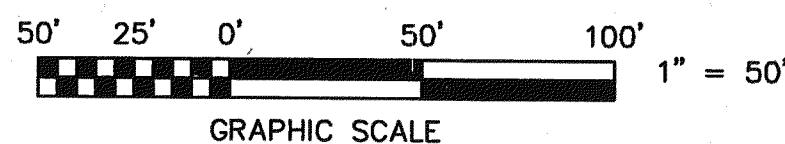
PROPERTY OF  
**APPALACHIAN POWER CO.**  
TAX NO. 415-0201  
D.B. 1539, PG. 1561

PROPERTY OF  
**TINKER PROPERTIES ASSOCIATES**  
TAX NO. 417-0401  
D.B. 1380, PG. 650



IN THE CLERK'S OFFICE OF THE CIRCUIT COURT OF THE CITY OF ROANOKE, VIRGINIA  
THIS MAP WAS PRESENTED WITH THE CERTIFICATE OF ACKNOWLEDGMENT THERETO ATTACHED  
ADMITTED TO RECORD AT 3:32 O'CLOCK PM ON THIS 8 DAY OF February, 2001.

TESTE: ARTHUR B. CRUSH, III  
CLERK  
BY: Patty Taylor  
DEPUTY CLERK



|   |   |  |
|---|---|--|
| <b>TPP&amp;S</b> T. P. PARKER & SON<br>ENGINEERS 816 Boulevard<br>SURVEYORS Post Office Box 39<br>PLANNERS Salem, Virginia 24153<br><br>W.O.: 98-1195<br>TAX # 417-0401<br>N.B. <u>N/A</u> DRAWN <u>JTP, JR.</u><br>CALC. <u>CHK'D JTP</u><br>CLOSED: <u>JTP, JR.</u> | REVISED: 06/11/01   |  |
|   | ROANOKE OFFICE OF CITY ENGINEER VIRGINIA  |  |
|   | ROANOKE RIVER FLOOD REDUCTION PROJECT<br>SHOWING A NEW EASEMENT BEING ACQUIRED BY<br><b>THE CITY OF ROANOKE</b><br>FROM<br><b>TINKER PROPERTIES ASSOCIATES</b><br>THE CITY OF ROANOKE, VIRGINIA |  |
|   | SCALE: 1" = 50<br>DATE: 27 MARCH 2001<br>PLAN NO. 6444-017  | APPROVED: <u>Thompson C. Salinas 7-2001</u><br>CITY ENGINEER |

SHEET 1 OF 2  
M.B. 1 PG. 2399