

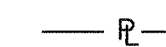
NOTE:

TAX NO. 416-0407 - 3,000 SQ. FT. IN FLOODWAY
 TAX NO. 416-0409 - 2,450 SQ. FT. IN FLOODWAY
 TAX NO. 416-0408 - 2,780 SQ. FT. IN FLOODWAY
 TAX NO. 416-0410 - 2,870 SQ. FT. IN FLOODWAY
 TAX NO. 416-0411 - 3,050 SQ. FT. IN FLOODWAY
 TAX NO. 416-0412 - 3,230 SQ. FT. IN FLOODWAY
 TAX NO. 416-0413 - LIES ENTIRELY IN FLOODWAY
 TAX NO. 416-0414 - LIES ENTIRELY IN FLOODWAY

MERIDIAN OF VIRGINIA STATE
 PLANE COORDINATE SYSTEM
 SOUTH ZONE

LEGEND:

PROPERTY BEING ACQUIRED



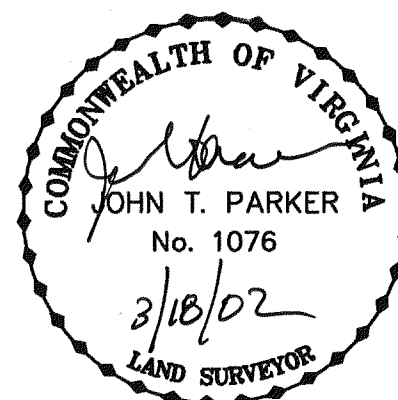
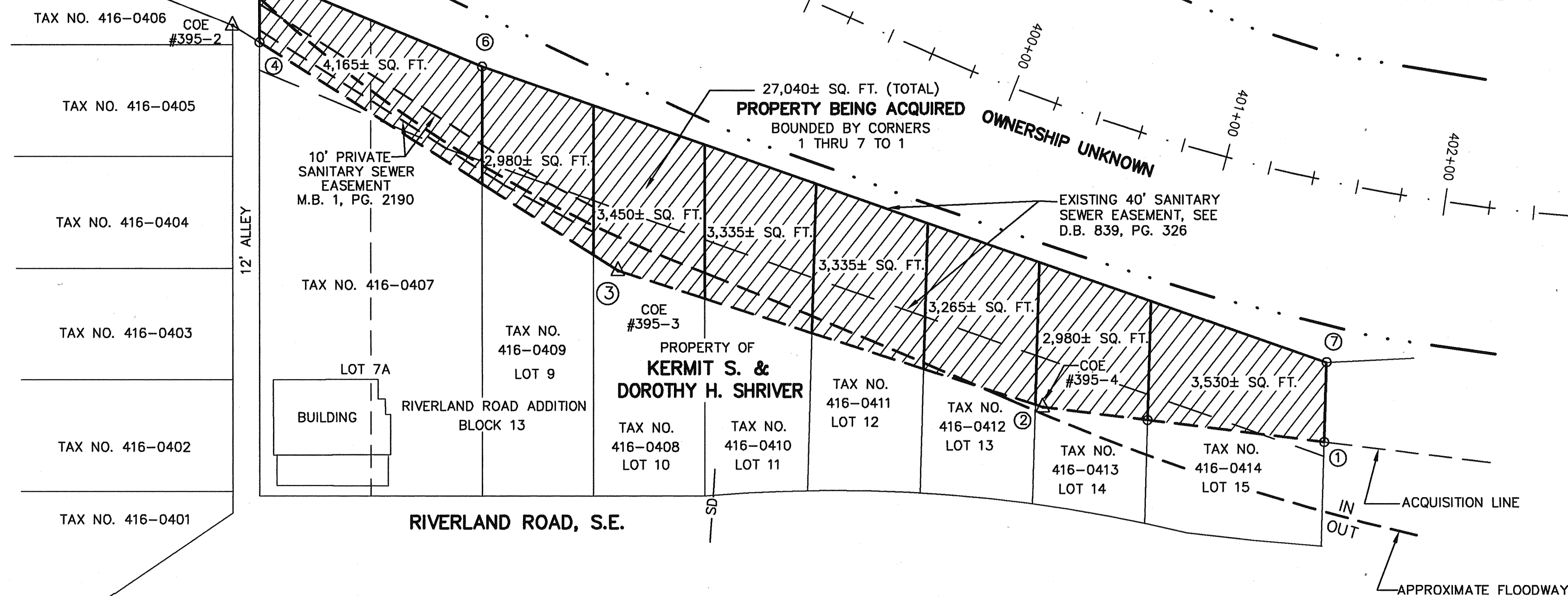
PROPERTY LINE

NOTES:

1. THIS PLAT IS BASED ON THE TITLE REPORTS DATED AUGUST 8, 2001, AND SEPTEMBER 10, 2001.
2. THIS PLAT REPRESENTS A COMPOSITE OF DEEDS, PLATS, CALCULATED INFORMATION AND FIELD TIES TO PROPERTY BOUNDARIES TO LOCATE THE POSITION OF THE PROPERTY IN RELATION TO THE BOUNDARIES. THIS SURVEY DOES NOT REFLECT A COMPLETE AND ACCURATE BOUNDARY SURVEY OF THE SUBJECT PROPERTIES.

COORDINATES

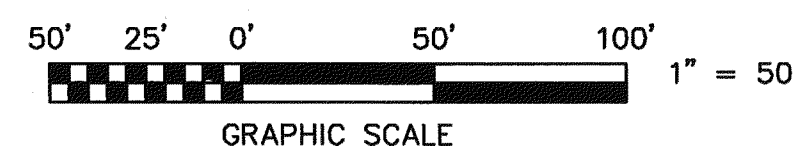
BY COE FLOOD REDUCTION PROJECT
 PI NUMBER NORTHING EASTING
 395-2 3619577.83 11067082.66
 395-3 3619380.44 11067138.00
 395-4 3619207.54 11067238.53



IN THE CLERK'S OFFICE OF THE CIRCUIT COURT OF THE CITY OF ROANOKE, VIRGINIA
 THIS MAP WAS PRESENTED WITH THE CERTIFICATE OF ACKNOWLEDGMENT THERETO ATTACHED
 ADMITTED TO RECORD AT 3:39 O'CLOCK P.M. ON THIS 3rd DAY OF April, 2002.

TESTE: ARTHUR B. CRUSH, III
 CLERK

BY: Arthur B. Crush, III
 DEPUTY CLERK



TPP&S T. P. PARKER & SON
 ENGINEERS 818 Boulevard
 SURVEYORS Post Office Box 39
 PLANNERS Salem, Virginia 24153

W.O.: 98-1195
 TAX # AS SHOWN
 N.B. N/A DRAWN JTP, JR.
 CALC. CHK'D JTP
 CLOSED: JTP, JR.

ROANOKE OFFICE OF CITY ENGINEER VIRGINIA

ROANOKE RIVER FLOOD REDUCTION PROJECT
 SHOWING PROPERTY BEING ACQUIRED IN FEE SIMPLE BY
THE CITY OF ROANOKE
 FROM

KERMIT S. & DOROTHY H. SHRIVER
 THE CITY OF ROANOKE, VIRGINIA

SCALE: 1" = 40'

DATE: 27 FEBRUARY 2002

PLAN NO. 6444-200

APPROVED: 3/18/02
Thrup C. Shriver
 CITY ENGINEER