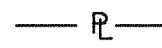


COORDINATES

BY COE FLOOD REDUCTION PROJECT
 PI NUMBER NORTHING EASTING
 386-50 3618054.63 11069726.61

LEGEND:

PROPERTY BEING ACQUIRED



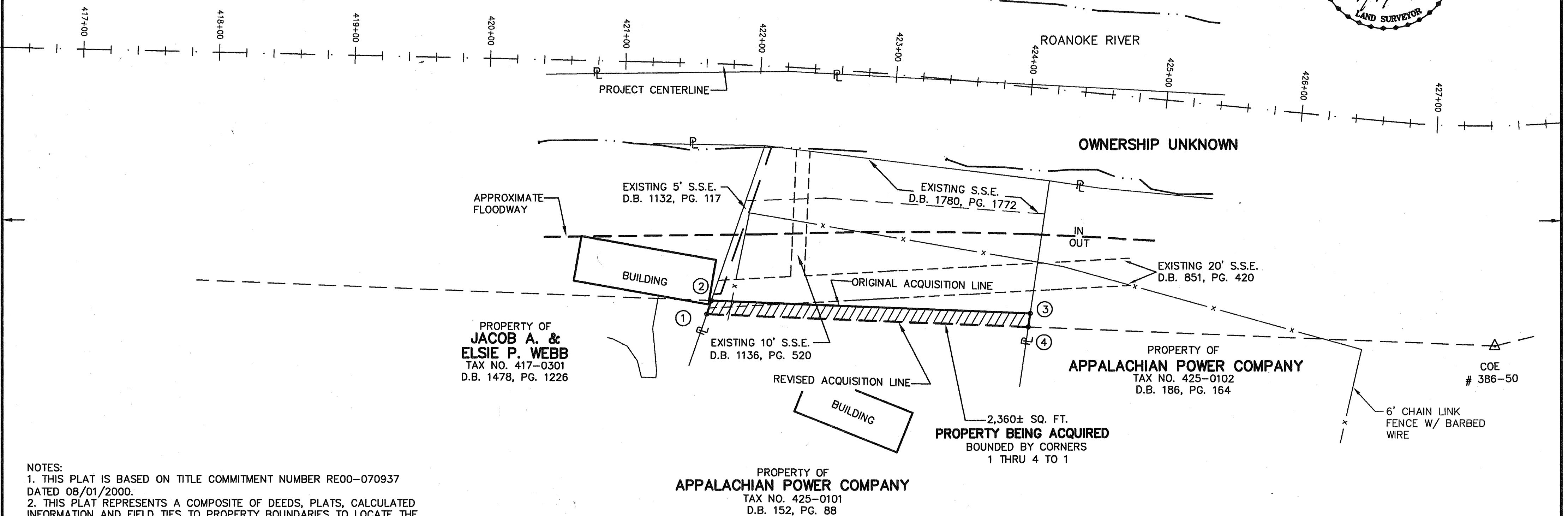
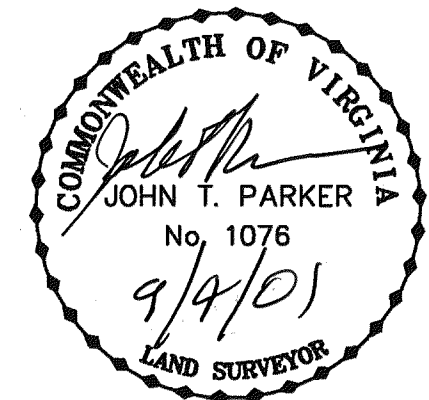
PROPERTY LINE

S.S.E.

SANITARY SEWER EASEMENT

EDGE OF RIVER

MERIDIAN OF VIRGINIA STATE
 PLANE COORDINATE SYSTEM
 SOUTH ZONE

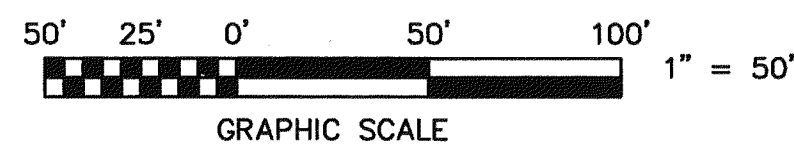
**NOTES:**

1. THIS PLAT IS BASED ON TITLE COMMITMENT NUMBER RE00-070937 DATED 08/01/2000.
2. THIS PLAT REPRESENTS A COMPOSITE OF DEEDS, PLATS, CALCULATED INFORMATION AND FIELD TIES TO PROPERTY BOUNDARIES TO LOCATE THE POSITION OF THE PROPERTY IN RELATION TO THE BOUNDARIES. THIS SURVEY DOES NOT REFLECT A COMPLETE AND ACCURATE BOUNDARY SURVEY OF THE SUBJECT PROPERTIES.

IN THE CLERK'S OFFICE OF THE CIRCUIT COURT OF THE CITY OF ROANOKE, VIRGINIA
 THIS MAP WAS PRESENTED WITH THE CERTIFICATE OF ACKNOWLEDGMENT THERETO ATTACHED
 ADMITTED TO RECORD AT 10:10 O'CLOCK A.M. ON THIS 11 DAY OF April, 2001.

TESTE: ARTHUR B. CRUSH, III
 CLERK

BY: *Patricia Taylor*
 DEPUTY CLERK



TPP&S T. P. PARKER & SON
 ENGINEERS 816 Boulevard
 SURVEYORS Post Office Box 39
 PLANNERS Salem, Virginia 24153

W.O.: 98-1195

TAX # 425-0101

N.B. N/A DRAWN JTP, JR.

CALC. CHK'D JTP

CLOSED: JTP, JR.

REVISD: 09/04/01
OFFICE OF CITY ENGINEER
ROANOKE VIRGINIA

ROANOKE RIVER FLOOD REDUCTION PROJECT
 SHOWING PROPERTY BEING ACQUIRED IN FEE SIMPLE BY

THE CITY OF ROANOKE
 FROM

APPALACHIAN POWER COMPANY

THE CITY OF ROANOKE, VIRGINIA

SCALE: 1" = 50'

DATE: 4 SEPTEMBER 2001

PLAN NO. 6444-011A

APPROVED:

Philip C. Edmister 9/6/01
 CITY ENGINEER