

### CENTERLINE OF 15' SANITARY SEWER EASEMENT

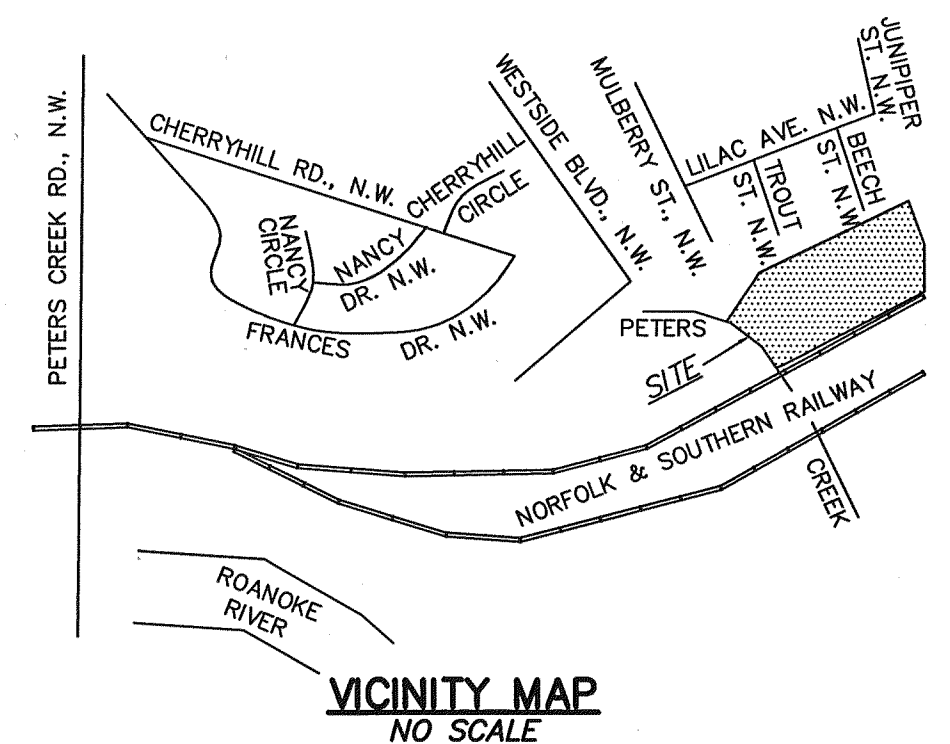
8-9	S11°19'50"E	28.83'
9-10	N76°07'01"E	173.51'
10-11	N75°20'53"E	284.14'
11-12	S80°10'59"E	28.75'
12-13	N15°03'12"W	49.90' (TIE TO CL)

### CENTERLINE OF 15' DRAINAGE EASEMENT

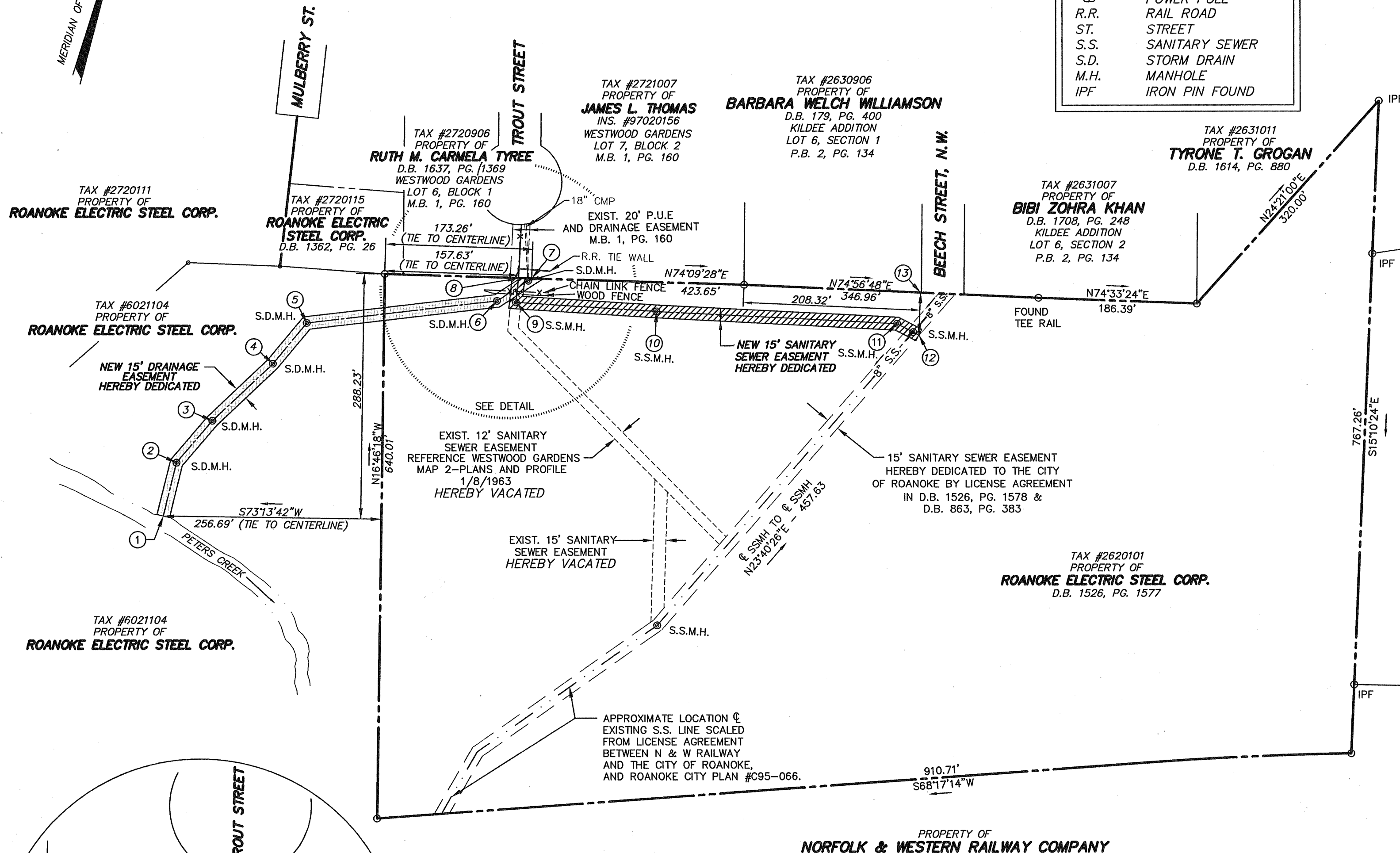
1-2	N03°38'54"W	64.56'
2-3	N23°04'35"E	64.90'
3-4	N29°05'07"E	97.88'
4-5	N22°15'20"E	62.24'
5-6	N65°47'46"E	225.54'
6-7	N39°35'09"E	48.78'

### LEGEND

AC.	ACRE
D.B.	DEED BOOK
INS.	INSTRUMENT
-x-	FENCE
M.B.	MAP BOOK
PG.	PAGE
⊕	POWER POLE
R.R.	RAIL ROAD
ST.	STREET
S.S.	SANITARY SEWER
S.D.	STORM DRAIN
M.H.	MANHOLE
IPF	IRON PIN FOUND



VICINITY MAP  
NO SCALE



### NOTES:

- THIS PLAT WAS PREPARED WITHOUT A TITLE REPORT BY A LICENSED ATTORNEY. THEREFORE, THERE MAY EXIST ENCUMBRANCES WHICH AFFECT THE PROPERTY NOT SHOWN HEREON.
- THIS PLAT DOES NOT REPRESENT A COMPLETE AND ACCURATE BOUNDARY SURVEY OF THE SUBJECT PROPERTY.
- LEGAL REFERENCE: M.B. 1, PG. 476
- THIS PLAT IS BASED ON A CURRENT FIELD SURVEY.
- LOCATION OF EXISTING 15' S.S. EASEMENT FROM BEECH ST. N.W. TO THE S.W. CORNER OF TAX PARCEL # 2620101 WAS LOCATED BY USING:  
(A) LICENSE AGREEMENT BETWEEN N & W RAILWAY & THE CITY OF ROANOKE DATED 3/15/51 D.B. 1526, PG. 1578.  
(B) CITY OF ROANOKE PLAN # C95-066, SURVEYOR WAS UNABLE TO OBTAIN FIELD LOCATION OF EXISTING MANHOLES ON THIS LINE.

TAX #2510103  
PROPERTY OF  
**J & M SERVICES OF VIRGINIA INC.**  
INSTRUMENT No. 970202773

### EASEMENT PLAT FOR ROANOKE ELECTRIC STEEL CORP.

SHOWING A 15' SANITARY SEWER EASEMENT AND A 15' DRAINAGE EASEMENT BEING DEDICATED TO THE CITY OF ROANOKE, VIRGINIA AND A 12' & 15' SANITARY SEWER EASEMENT BEING VACATED BY THE CITY OF ROANOKE THROUGH TAX PARCEL # 2620101.

SITUATE IN THE VICINITY OF TROUT ST. N.W.  
CITY OF ROANOKE, VIRGINIA.



**CALDWELL WHITE ASSOCIATES**

ENGINEERS / SURVEYORS / PLANNERS

4203 MELROSE AVENUE, NW  
P.O. BOX 6260  
ROANOKE, VIRGINIA 24017  
(540) 366-3400  
FAX: (540) 366-8702

Calculated: JW  
Drawn: JW  
Checked: F.B. Caldwell, III  
Date: APRIL 16, 2002

Scale: 1" = 100'  
Tax Parcel: 6021104  
Field Book: WES-6  
W.O. No.: 00-0017

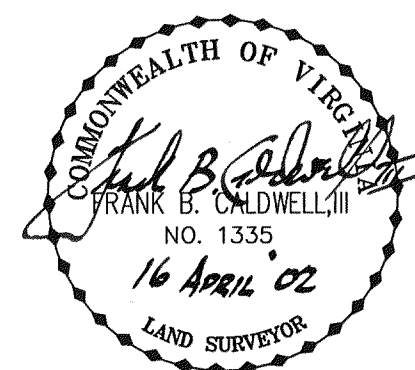
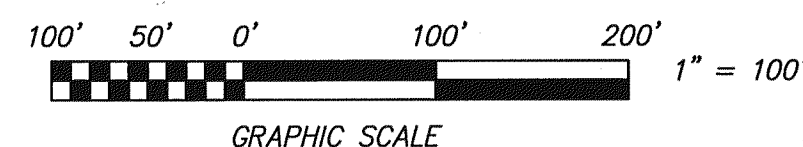
IN THE CLERK'S OFFICE OF THE CIRCUIT COURT OF CITY OF ROANOKE, VIRGINIA  
THIS MAP WAS PRESENTED WITH THE CERTIFICATE OF ACKNOWLEDGEMENT  
THERE TO ATTACHED ADMITTED TO RECORD AT 11:18 O'CLOCK A.M. ON  
THIS 9 DAY OF July, 2002.

TESTE:

ARTHUR B. CRUSH, III

CLERK

BY: *[Signature]*  
DEPUTY CLERK



DETAIL  
1"=60'