

# COORDINATES

BY COE FLOOD REDUCTION PROJECT

## NOTE:

AREA LIES ENTIRELY OUT OF FEMA FLOODWAY.

THIS IS AN ORIGINAL SIZE PLAT AND HAS NOT BEEN REDUCED.




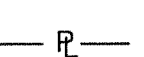

M.B. 1 PG. 2524

MERIDIAN OF VIRGINIA STATE  
PLANE COORDINATE SYSTEM  
NAD83  
SOUTH ZONE

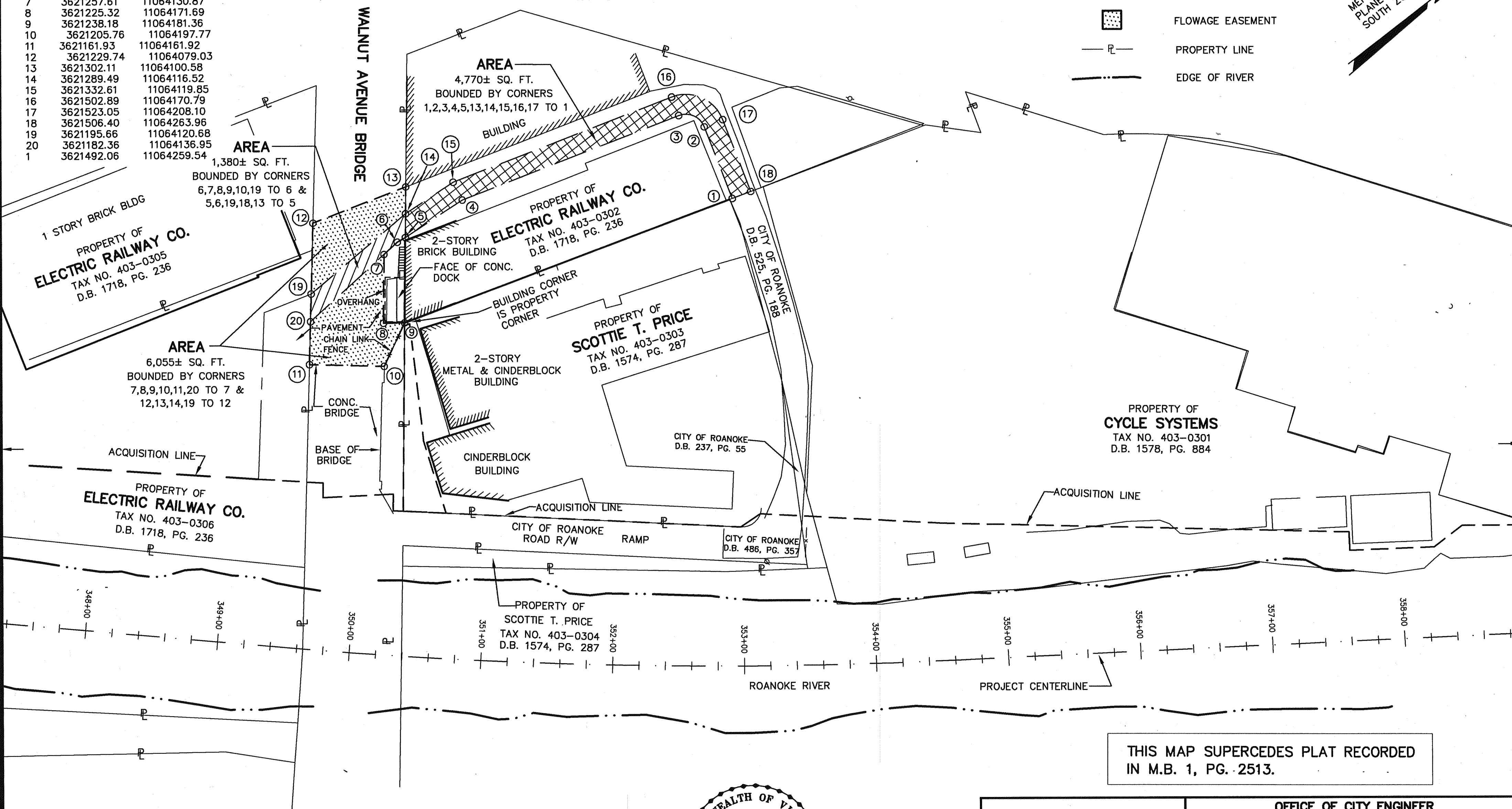
## NOTES:

1. THIS PLAT IS BASED ON TITLE REPORT DATED MAY 8, 2001.  
2. THIS PLAT REPRESENTS A COMPOSITE OF DEEDS, PLATS, CALCULATED INFORMATION AND FIELD TIES TO PROPERTY BOUNDARIES TO LOCATE THE POSITION OF THE PROPERTY IN RELATION TO THE BOUNDARIES. THIS SURVEY DOES NOT REFLECT A COMPLETE AND ACCURATE BOUNDARY SURVEY OF THE SUBJECT PROPERTIES.

## LEGEND:

-  PERMANENT ACCESS EASEMENT
-  PERMANENT ACCESS & FLOWAGE EASEMENT
-  FLOWAGE EASEMENT
-  PROPERTY LINE
-  EDGE OF RIVER

PI NUMBER	NORTHING	EASTING
1	3621492.06	11064259.54
2	3621508.67	11064203.82
3	3621498.60	11064185.16
4	3621329.85	11064134.68
5	3621278.27	11064130.70
6	3621271.23	11064129.77
7	3621257.61	11064130.87
8	3621225.32	11064171.69
9	3621238.18	11064181.36
10	3621205.76	11064197.77
11	3621161.93	11064161.92
12	3621229.74	11064079.03
13	3621302.11	11064100.58
14	3621289.49	11064116.52
15	3621332.61	11064119.85
16	3621502.89	11064170.79
17	3621523.05	11064208.10
18	3621506.40	11064263.96
19	3621195.66	11064120.68
20	3621182.36	11064136.95
1	3621492.06	11064259.54

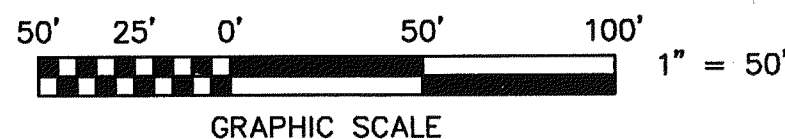
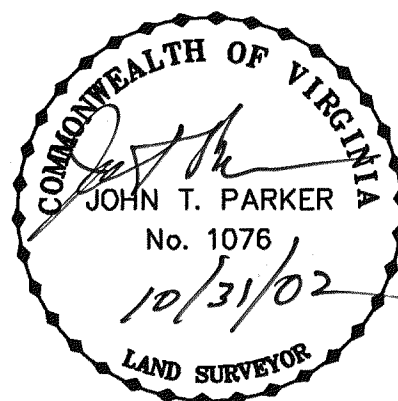


THIS MAP SUPERCEDES PLAT RECORDED  
IN M.B. 1, PG. 2513.

IN THE CLERK'S OFFICE OF THE CIRCUIT COURT OF THE CITY OF ROANOKE, VIRGINIA  
THIS MAP WAS PRESENTED WITH THE CERTIFICATE OF ACKNOWLEDGMENT THERETO ATTACHED  
ADMITTED TO RECORD AT 1:32 O'CLOCK P.M. ON THIS 1 DAY OF November, 2002.

TESTE: ARTHUR B. CRUSH, III  
CLERK

BY: Samuel Brum  
DEPUTY CLERK



<b>TPP&amp;S</b> T. P. PARKER & SON ENGINEERS 816 Boulevard SURVEYORS Post Office Box 39 PLANNERS Salem, Virginia 24153  W.O.: <u>98-1195</u> TAX # <u>403-0302</u> N.B. <u>N/A</u> DRAWN <u>JTP, JR.</u> CALC. <u>CHK'D JTP</u> CLOSED: <u>JTP, JR.</u>	<b>OFFICE OF CITY ENGINEER</b> <b>ROANOKE VIRGINIA</b> ROANOKE RIVER FLOOD REDUCTION PROJECT SHOWING NEW EASEMENTS BEING ACQUIRED BY <b>THE CITY OF ROANOKE</b> FROM <b>ELECTRIC RAILWAY COMPANY</b> THE CITY OF ROANOKE, VIRGINIA	
	SCALE: 1" = 50' DATE: 31 OCT. 2002 PLAN NO. 6444-066B	APPROVED: <u>Philip S. Sullivan</u> 10/31/02 CITY ENGINEER
	M.B. <u>1</u> PG. <u>2524</u>	