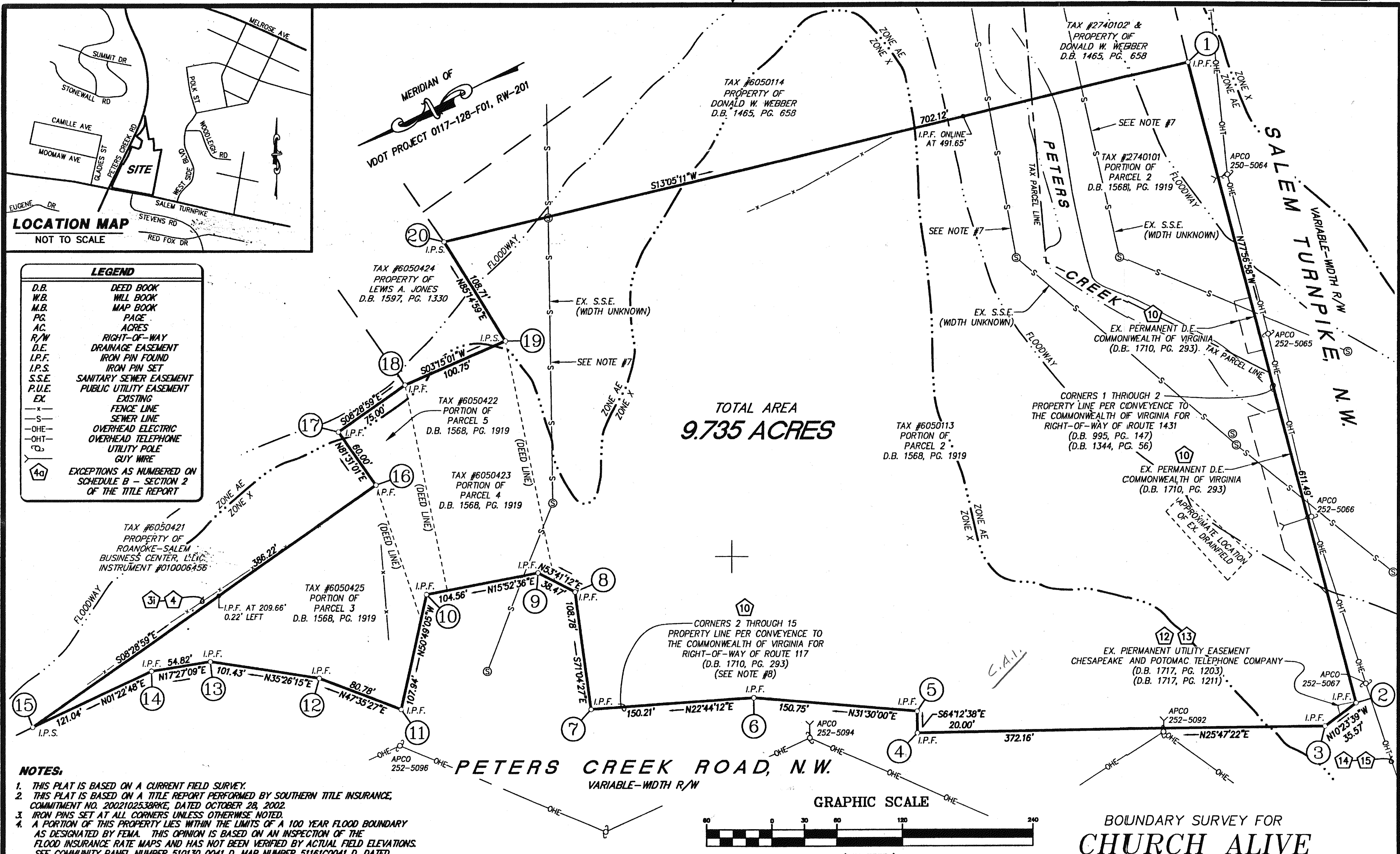


LEGEND	
D.B.	DEED BOOK
W.B.	WILL BOOK
M.B.	MAP BOOK
P.G.	PAGE
AC.	ACRES
R/W	RIGHT-OF-WAY
D.E.	DRAINAGE EASEMENT
I.P.F.	IRON PIN FOUND
I.P.S.	IRON PIN SET
S.S.E.	SANITARY SEWER EASEMENT
P.U.E.	PUBLIC UTILITY EASEMENT
EX.	EXISTING
-	FENCE LINE
-	SEWER LINE
-	OVERHEAD ELECTRIC
-	OVERHEAD TELEPHONE
-	UTILITY POLE
-	GUY WIRE
4a	EXCEPTIONS AS NUMBERED ON SCHEDULE B - SECTION 2 OF THE TITLE REPORT

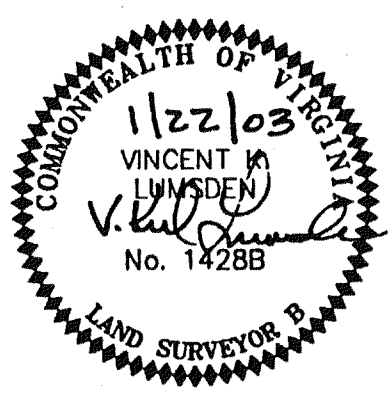
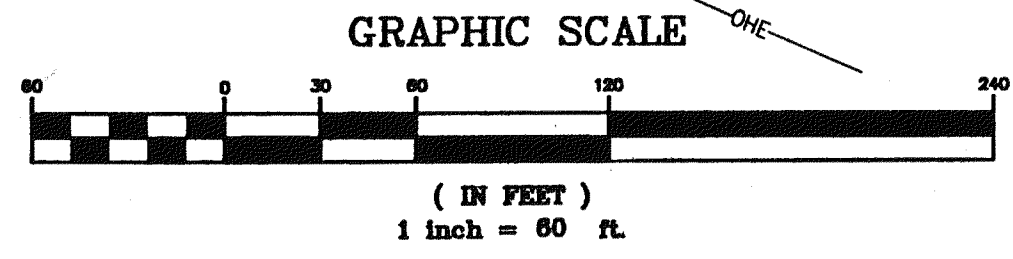


- NOTES:**
- THIS PLAT IS BASED ON A CURRENT FIELD SURVEY.
 - THIS PLAT IS BASED ON A TITLE REPORT PERFORMED BY SOUTHERN TITLE INSURANCE, COMMITMENT NO. 2002102538RKE, DATED OCTOBER 28, 2002.
 - IRON PINS SET AT ALL CORNERS UNLESS OTHERWISE NOTED.
 - A PORTION OF THIS PROPERTY LIES WITHIN THE LIMITS OF A 100 YEAR FLOOD BOUNDARY AS DESIGNATED BY FEMA. THIS OPINION IS BASED ON AN INSPECTION OF THE FLOOD INSURANCE RATE MAPS AND HAS NOT BEEN VERIFIED BY ACTUAL FIELD ELEVATIONS. SEE COMMUNITY PANEL NUMBER 510130 0041 D, MAP NUMBER 51161C0041 D, DATED OCTOBER 15, 1993. UNSHADED ZONES AE & X.
 - THIS ORIGINAL SCALE PLAT HAS NOT BEEN REDUCED.
 - LEGAL REFERENCES - D.B. 1568, PG. 1919; W.B. 33, PG. 1145; D.B. 995, PG. 147; D.B. 1344, PG. 56; D.B. 1710, PG. 293.
 - THE LOCATIONS THE SANITARY SEWER LINES SHOWN HEREON ARE BASED ON ABOVE GROUND STRUCTURES AND AVAILABLE UTILITY MAPS.
 - THE RIGHT-OF-WAY OF PETERS CREEK ROAD PER VIRGINIA DEPARTMENT OF TRANSPORTATION PROJECT #0117-128-F01, RW-201, C-501 SHEETS 14, 15 AND 16.
 - THE PROPERTY IS NOT SUBJECT TO THE FOLLOWING EASEMENTS: (NUMBER TO CORRESPOND TO SCHEDULE B - SECTION 2 OF THE TITLE REPORT)
 - TEMPORARY CONSTRUCTION EASEMENTS GRANTED TO THE COMMONWEALTH OF VIRGINIA IN D.B. 995, PG. 147. (CONSTRUCTION COMPLETED)
 - TEMPORARY CONSTRUCTION EASEMENTS GRANTED TO THE COMMONWEALTH OF VIRGINIA IN D.B. 1344, PG. 56. (CONSTRUCTION COMPLETED)
 - TEMPORARY CONSTRUCTION EASEMENTS GRANTED TO THE COMMONWEALTH OF VIRGINIA IN D.B. 1710, PG. 293. (CONSTRUCTION COMPLETED)
 - TEMPORARY CONSTRUCTION EASEMENTS GRANTED TO THE COMMONWEALTH OF VIRGINIA IN D.B. 1714, PG. 1027. (CONSTRUCTION COMPLETED)
 - RIGHT-OF-WAY AND EASEMENT FOR AN ELECTRICAL POWER LINE OR LINES AND COMMUNICATION LINES GRANTED TO APPALACHIAN POWER COMPANY IN D.B. 1732, PG. 276.
 - RIGHT-OF-WAY AND EASEMENT FOR AN ELECTRICAL POWER LINE OR LINES AND COMMUNICATION LINES GRANTED TO APPALACHIAN POWER COMPANY IN D.B. 1732, PG. 276.

- NOTES (CONTINUED)**
- THE EXACT LOCATION OF THE FOLLOWING EASEMENTS, WHICH AFFECT THE PROPERTY, CAN NOT BE CONCLUSIVELY DETERMINED BY AVAILABLE UTILITY PLANS OR PUBLIC RECORDS. (NUMBER TO CORRESPOND TO SCHEDULE B - SECTION 2 OF THE TITLE REPORT)
 - 10' SANITARY SEWER AND TEMPORARY CONSTRUCTION EASEMENTS GRANTED TO THE ROANOKE COUNTY SANITATION AUTHORITY IN D.B. 785, PG. 589.
 - 20' SANITARY SEWER AND TEMPORARY CONSTRUCTION EASEMENTS GRANTED TO THE ROANOKE COUNTY PUBLIC SERVICE AUTHORITY IN D.B. 868, PG. 751.

IN THE CLERK'S OFFICE FOR THE CIRCUIT COURT OF THE CITY OF ROANOKE, VIRGINIA, THIS PLAT WAS PRESENTED AND WITH THE CERTIFICATE OF ACKNOWLEDGMENT THERETO ANNEXED, IS ADMITTED TO RECORD AT 4:15 O'CLOCK ON THIS 23 DAY OF FEB 2003.

TESTEE: ARTHUR B. CRUSH, CLERK
Patty Taylor
DEPUTY CLERK



BOUNDARY SURVEY FOR
CHURCH ALIVE INTERNATIONAL

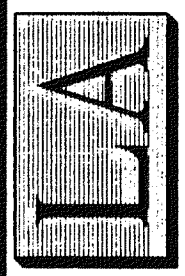
SHOWING A 9.735 ACRE TRACT
BEING A PORTION OF
PARCELS 2, 3, 4 & 5 DESCRIBED
IN DEED BOOK 1568, PG. 1919

PROPERTY OF
**BETTY L. GOODE FULLER JURASKI,
CHARLENE GOODE DEAN, PAXTON C.
HAWTHORNE & JOYCE C. HAWTHORNE**
SITUATED AT THE INTERSECTION OF PETERS
CREEK ROAD, N.W. AND SALEM TURNPIKE, N.W.
ROANOKE CITY, VIRGINIA

PHONE: (540) 774-4411
FAX: (540) 772-9445
E-MAIL: MAIL@LUMSDENPC.COM

4664 BRAMBLETON AVENUE, SW
P.O. BOX 20669
ROANOKE, VIRGINIA 24018

LUMSDEN ASSOCIATES, P.C.
ENGINEERS-SURVEYORS-PLANNERS
ROANOKE, VIRGINIA



DATE:	JANUARY 22, 2003
COMM. NO.:	02-356
CADD FILE:	F:\2002\02356\SUR\02356BAS.DWG
SCALE:	1" = 60'
SHEET	1 OF 1