

LEGEND:

APCO. = APPALACHIAN POWER COMPANY  
NOW AMERICAN ELECTRIC POWER  
CL = CENTERLINE  
BLDG = BUILDING

THIS IS AN ORIGINAL SIZE PLAT AND HAS NOT BEEN REDUCED.

M.B. 1, PG. 2559

PROPERTY OF  
**F. & D. LAND COMPANY**  
TAX No. 7090502  
D.B. 1497, PG. 1000

PROPERTY OF  
**GLADE CREEK STATION, L.P.**  
TAX No. 7090523  
INST. NO. 970022875

PROPERTY OF  
**JERRY B. SHAVER, et al**  
TAX No. 7090509  
D.B. 1759, PG. 389

PROPERTY OF  
**I.D. & LAURA I. PATEL**  
TAX No. 7090507  
D.B. 1451, PG. 1505

PROPERTY OF  
**LITTON SYSTEMS, INC**  
TAX No. 7090510  
D.B. 1718, PG. 1788

PROPERTY OF  
**TAYLOR HOUSE, LLC**  
TAX No. 7090514  
INST. NO. 990014034

PROPERTY OF  
**HICKORY WOODS APARTMENTS LLC**  
TAX No. 7090522  
D.B. 1730, PG. 545

**TRACT "A"**  
PROPERTY OF  
**GLADE CREEK STATION, L.P.**  
TAX No. 7090501  
INST. NO. 970022875

**REVISED ELECTRIC EASEMENT PLAT**  
FOR  
**GLADE CREEK STATION II, L.P.**

SHOWING REVISED ELECTRIC EASEMENT  
BEING GRANTED TO APPALACHIAN POWER COMPANY

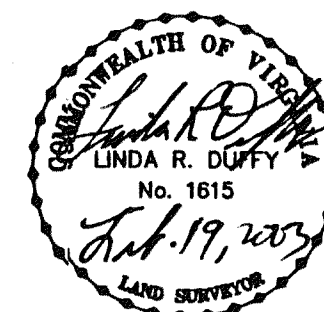
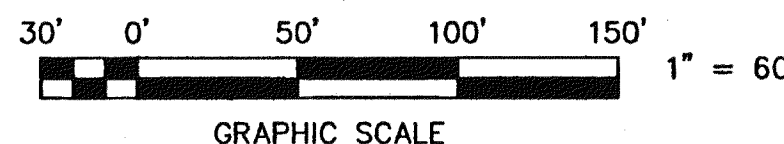
SITUATE KING STREET, N.E.  
CITY OF ROANOKE, VIRGINIA

TAX # 7090501  
DRAWN: Z-LRD-14  
CALC: LRD  
W.O. 03-0020  
SCALE: 1" = 60'

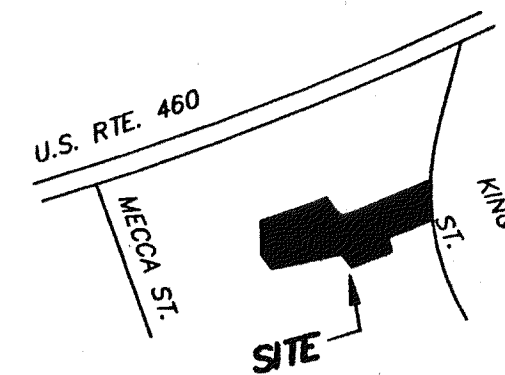
DATE: NOVEMBER 19, 1998  
REV: FEBRUARY 22, 2000  
REV: JANUARY 10, 2001  
REV: JANUARY 31, 2003



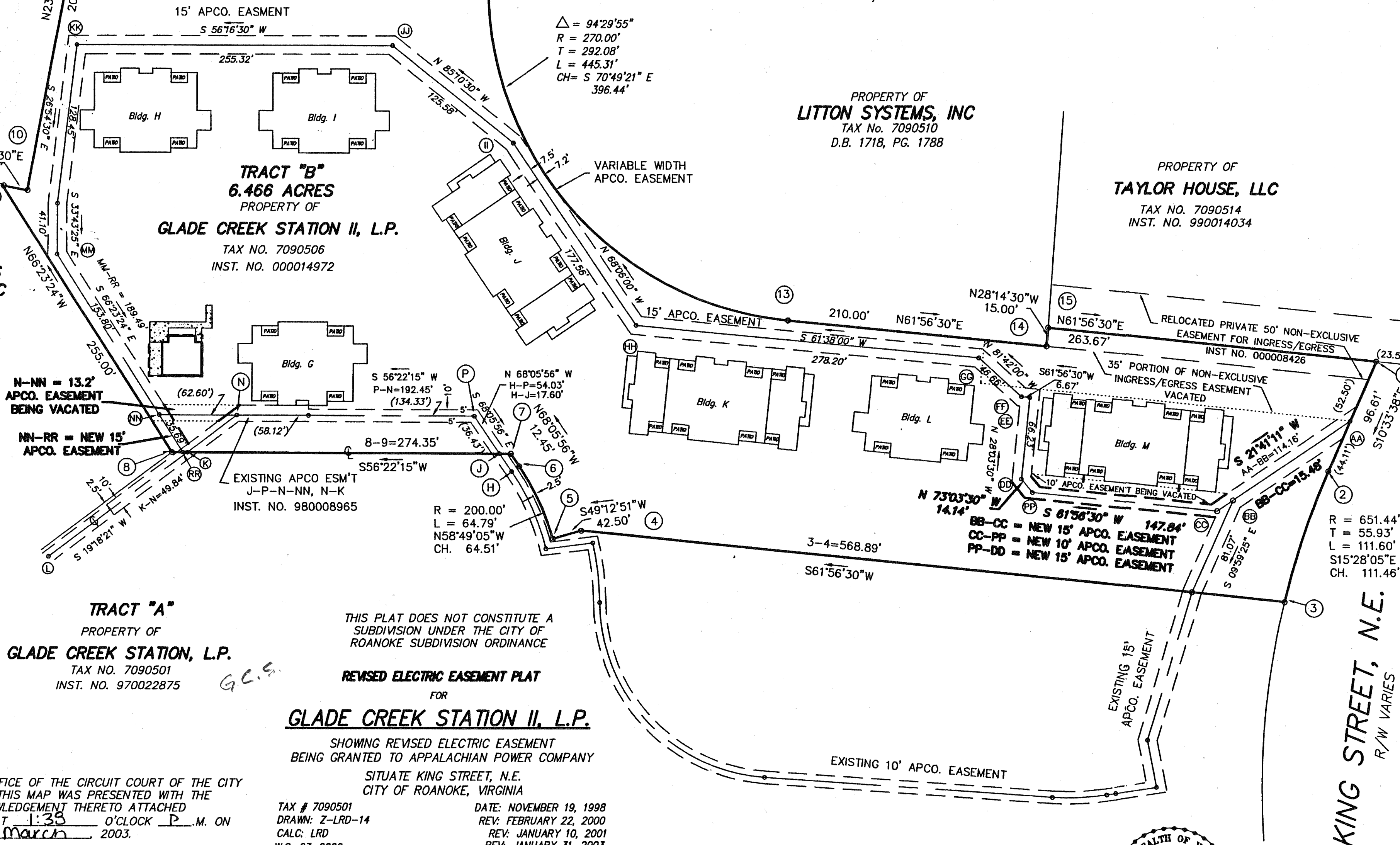
**TPP&S T. P. PARKER & SON**  
ENGINEERS  
SURVEYORS  
PLANNERS  
816 Boulevard  
Post Office Box 39  
Salem, Virginia 24153  
540-387-1153



M.B. 1, PG. 2559



VICINITY MAP



THIS PLAT DOES NOT CONSTITUTE A  
SUBDIVISION UNDER THE CITY OF  
ROANOKE SUBDIVISION ORDINANCE

IN THE CLERK'S OFFICE OF THE CIRCUIT COURT OF THE CITY  
OF ROANOKE, VIRGINIA THIS MAP WAS PRESENTED WITH THE  
CERTIFICATE OF ACKNOWLEDGEMENT THERETO ATTACHED  
ADMITTED TO RECORD AT 1:33 O'CLOCK P.M. ON  
THIS 5th DAY OF March 2003.

TESTE: ARTHUR B. CRUSH, III  
CLERK

BY: *Linda R. Duffy*  
DEPUTY CLERK

CLOSED BY LRD

0673