

PROPERTY OF
CONMAT PROPERTIES, L.C.
INSTRUMENT NO. 97022353
TAX PARCEL 1032207

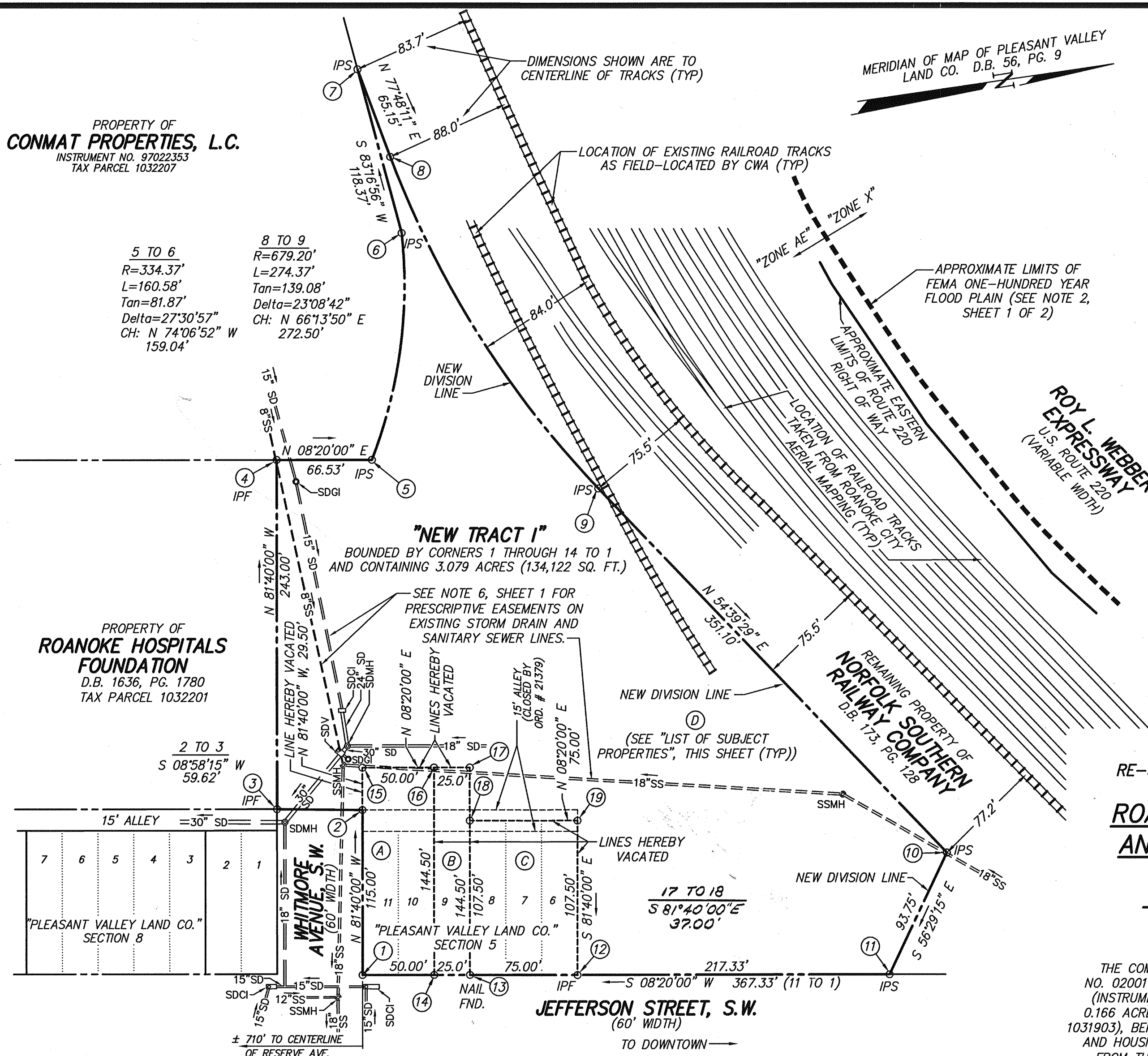
PROPERTY CORNER COORDINATE LIST

COORDINATES SHOWN ARE BASED ON AN ASSUMED ORIGIN, AND THE REFERENCED MERIDIAN, AND ARE VALID ONLY FOR THE SUBJECT PROPERTIES.

CORNER	NORTHING	EASTING
1	5000.0000	5000.0000
2	5016.6672	4886.2142
3	4957.7764	4876.9176
4	4992.9949	4636.4832
5	5058.8224	4646.1256
6	5102.3544	4493.1592
7	5088.5076	4375.6019
8	5102.2720	4439.2813
9	5212.1051	4688.6664
10	5415.2006	4975.0637
11	5363.4395	5053.2292
12	5148.4041	5021.7312
13	5074.1960	5010.8613
14	5049.4600	5007.2380
1	4999.9879	4999.9914

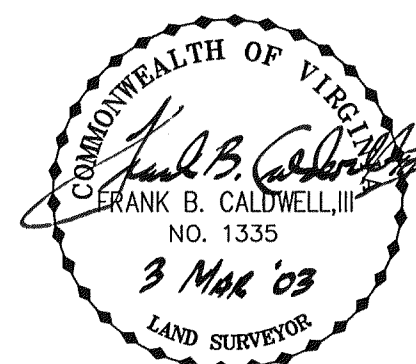
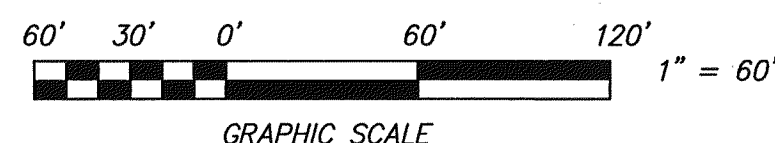
5 TO 6
R=334.37'
L=160.58'
Tan=81.87'
Delta=27°30'57"
CH: N 74°06'52" W
159.04'

8 TO 9
R=679.20'
L=274.37'
Tan=139.08'
Delta=23°08'42"
CH: N 66°13'50" E
272.50'



LEGEND

FND.	FOUND
IPF	IRON PIN FOUND
IPS	IRON PIN SET
SDGI	STORM DRAIN GRATE INLET
SDCI	STORM DRAIN CURB INLET
SDMH	STORM DRAIN MANHOLE
SDV	STORM DRAIN VAULT
SSMH	SANITARY SEWER MANHOLE
15"SD	15" STORM DRAIN PIPE
12"SS	12" SANITARY SEWER PIPE
(TYP)	TYPICAL



LIST OF SUBJECT PROPERTIES

PROPERTY (A)
PROPERTY OF
ROANOKE REDEVELOPMENT AND HOUSING AUTHORITY
CITY OF ROANOKE TAX PARCEL 1031903
BOUNDED BY CORNERS 1, 2, 15, 16, 14 TO 1
CONTAINING 0.166 ACRES (7,225 SQ. FT.)
INSTRUMENT NUMBER 020001391.

PROPERTY (B)
PROPERTY OF
ROANOKE REDEVELOPMENT AND HOUSING AUTHORITY
CITY OF ROANOKE TAX PARCEL 1031902
BOUNDED BY CORNERS 14, 16, 17, 18, 13 TO 14,
CONTAINING 0.083 ACRES (3,612 SQ. FT.)
INSTRUMENT NUMBER 020010334.

PROPERTY (C)
PROPERTY OF
ROANOKE REDEVELOPMENT AND HOUSING AUTHORITY
CITY OF ROANOKE TAX PARCEL 1031901
BOUNDED BY CORNERS 13, 18, 19, 12 TO 13,
CONTAINING 0.185 ACRES (8,063 SQ. FT.)
INSTRUMENT NUMBER 020010320.

PROPERTY (D)
PROPERTY OF
NORFOLK SOUTHERN RAILWAY COMPANY
BOUNDED BY CORNERS 2 THROUGH 12, INCLUSIVE,
TO 19, 18, 17, 15 TO 2,
CONTAINING 2.645 ACRES (115,222 SQ. FT.)
D.B. 173, PG. 128

RE-SUBDIVISION AND COMBINATION PLAT FOR **ROANOKE REDEVELOPMENT AND HOUSING AUTHORITY** AND **NORFOLK SOUTHERN RAILWAY COMPANY**

SHOWING
THE COMBINATION OF A 0.185 ACRE PARCEL (INSTRUMENT NO. 020010320, TAX PARCEL 1031901), A 0.083 ACRE PARCEL (INSTRUMENT NO. 020010334, TAX PARCEL 1031902), AND A 0.166 ACRE PARCEL (INSTRUMENT NO. 020001391, TAX PARCEL 1031903), BEING THE PROPERTIES OF THE ROANOKE REDEVELOPMENT AND HOUSING AUTHORITY, WITH 2.645 ACRES BEING SUBDIVIDED FROM THE PROPERTY OF THE NORFOLK SOUTHERN RAILWAY COMPANY (D.B. 173, PG. 128), CREATING HEREON

NEW TRACT I (3.079 ACRES)

SITUATE THE NORTHWEST CORNER OF THE INTERSECTION OF JEFFERSON STREET, S.W. AND WHITMORE AVENUE, S.W. CITY OF ROANOKE, VIRGINIA

CWA
CALDWELL WHITE ASSOCIATES
ENGINEERS / SURVEYORS / PLANNERS

4203 MELROSE AVENUE
P.O. BOX 6260
ROANOKE, VIRGINIA 24017-0260
(540) 366-3400
FAX: (540) 366-8702

Tax Nos.: 1031901, 1902, 1903
Calculated: C.L. White
Drawn: C.L. White

SHEET 2 OF 2

Revised: Feb. 20, 2003
Date: Sept. 05, 2002
Scale: 1" = 60'
W.O. No.: 02-0099