


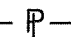



NOTES:

1. THIS PLAT IS BASED ON TITLE DATED 05/25/2002.
2. THIS PLAT REPRESENTS A COMPOSITE OF DEEDS, PLATS, CALCULATED INFORMATION AND FIELD TIES TO PROPERTY BOUNDARIES TO LOCATE THE POSITION OF THE PROPERTY IN RELATION TO THE BOUNDARIES. THIS SURVEY DOES NOT REFLECT A COMPLETE AND ACCURATE BOUNDARY SURVEY OF THE SUBJECT PROPERTIES.

LEGEND:

-  PERMANENT ACCESS EASEMENT
-  PROPERTY BEING ACQUIRED
-  TEMPORARY CONSTRUCTION EASEMENT
-  PROPERTY LINE
-  EDGE OF RIVER

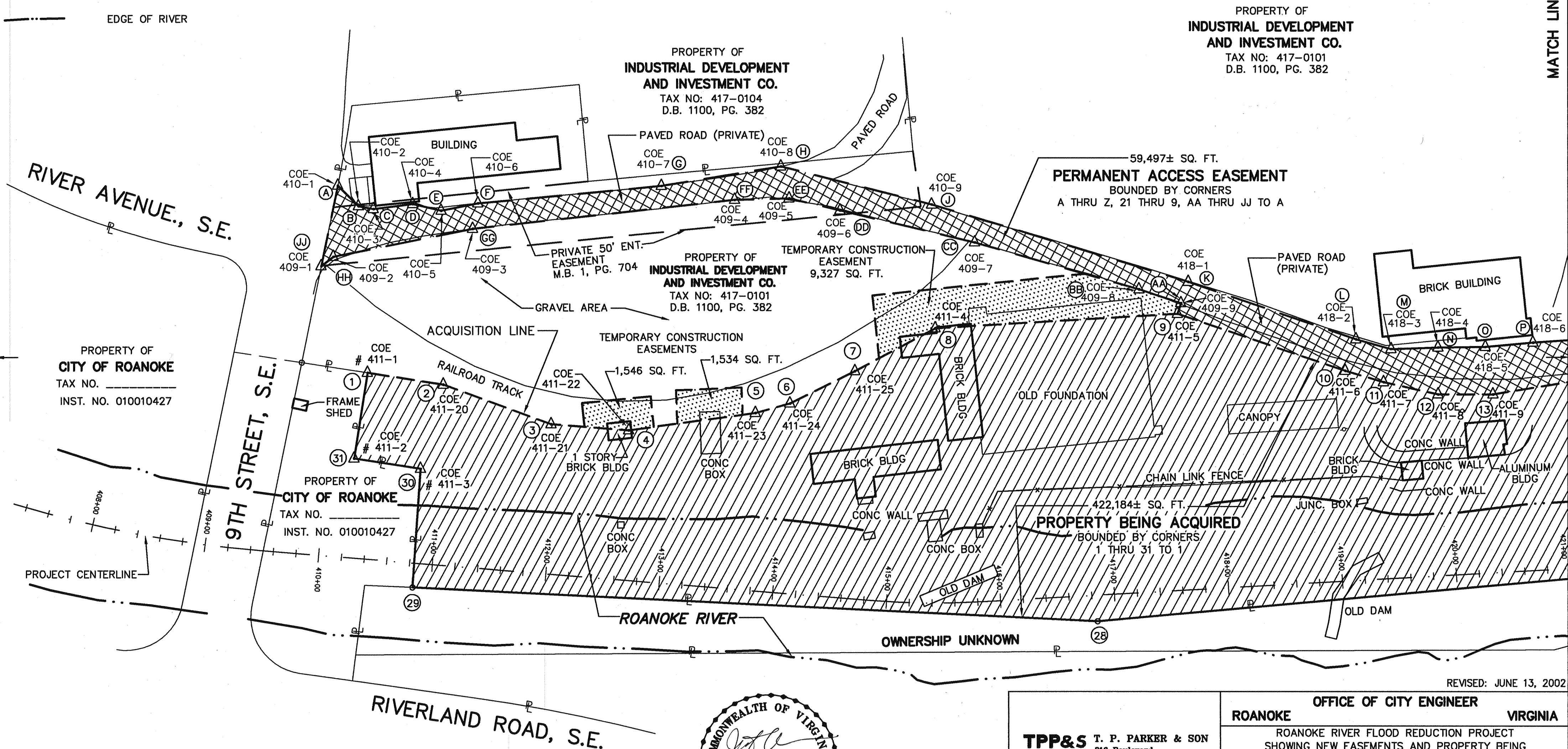
THIS IS AN ORIGINAL SIZE PLAT AND HAS NOT BEEN REDUCED.

M.B. 1 PG. 2605

NOTE:

PROPERTY BEING ACQUIRED LIES ENTIRELY IN FEMA FLOODWAY.

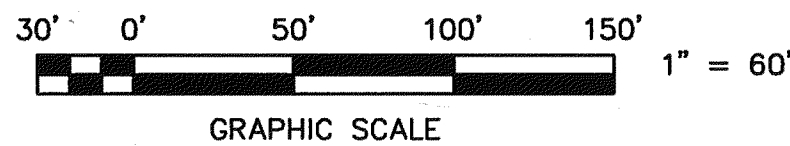
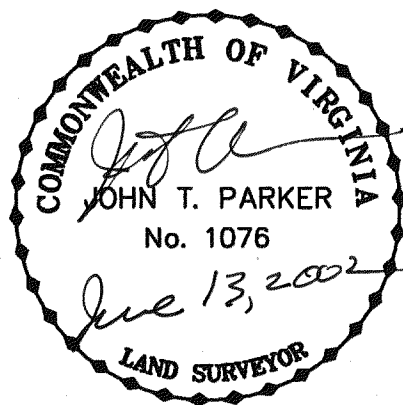
MATCH LINE - SEE SHEET 2 OF 2



IN THE CLERK'S OFFICE OF THE CIRCUIT COURT OF THE CITY OF ROANOKE, VIRGINIA THIS MAP WAS PRESENTED WITH THE CERTIFICATE OF ACKNOWLEDGMENT THERE TO ATTACHED ADMITTED TO RECORD AT 9:40 O'CLOCK A.M. ON THIS 26 DAY OF June, 2002.

TESTE: ARTHUR B. CRUSH, III
CLERK

BY: *James B. Miller*
DEPUTY CLERK



TPP&S T. P. PARKER & SON
ENGINEERS 818 Boulevard
SURVEYORS Post Office Box 39
PLANNERS Salem, Virginia 24153

W.O.: 98-1195
TAX # 417-0101
N.B. N/A DRAWN JTP, JR.
CALC. CHK'D JTP
CLOSED: JTP, JR.

ROANOKE OFFICE OF CITY ENGINEER VIRGINIA	
ROANOKE RIVER FLOOD REDUCTION PROJECT SHOWING NEW EASEMENTS AND PROPERTY BEING ACQUIRED IN FEE SIMPLE BY THE CITY OF ROANOKE FROM INDUSTRIAL DEVELOPMENT AND INVESTMENT CO. THE CITY OF ROANOKE, VIRGINIA	
SCALE: 1" = 60'	APPROVED: <i>James B. Miller</i> 6/13/02 CITY ENGINEER
DATE: 21 FEBRUARY 2002	
PLAN NO. 6444-013A	

SHEET 1 OF 2
M.B. 1 PG. 2605