

COORDINATES		
BY COE FLOOD REDUCTION PROJECT		
PI NUMBER	NORTHING	EASTING
319-1	3618670.19	11062806.57
298-21	3618936.29	11062936.57
298-22	3618861.71	11062926.84

MERIDIAN OF VIRGINIA STATE
PLANE COORDINATE SYSTEM
SOUTH ZONE
NAD83





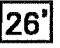
NOTE:
EASEMENT AREA LIES ENTIRELY IN FEMA FLOODWAY.

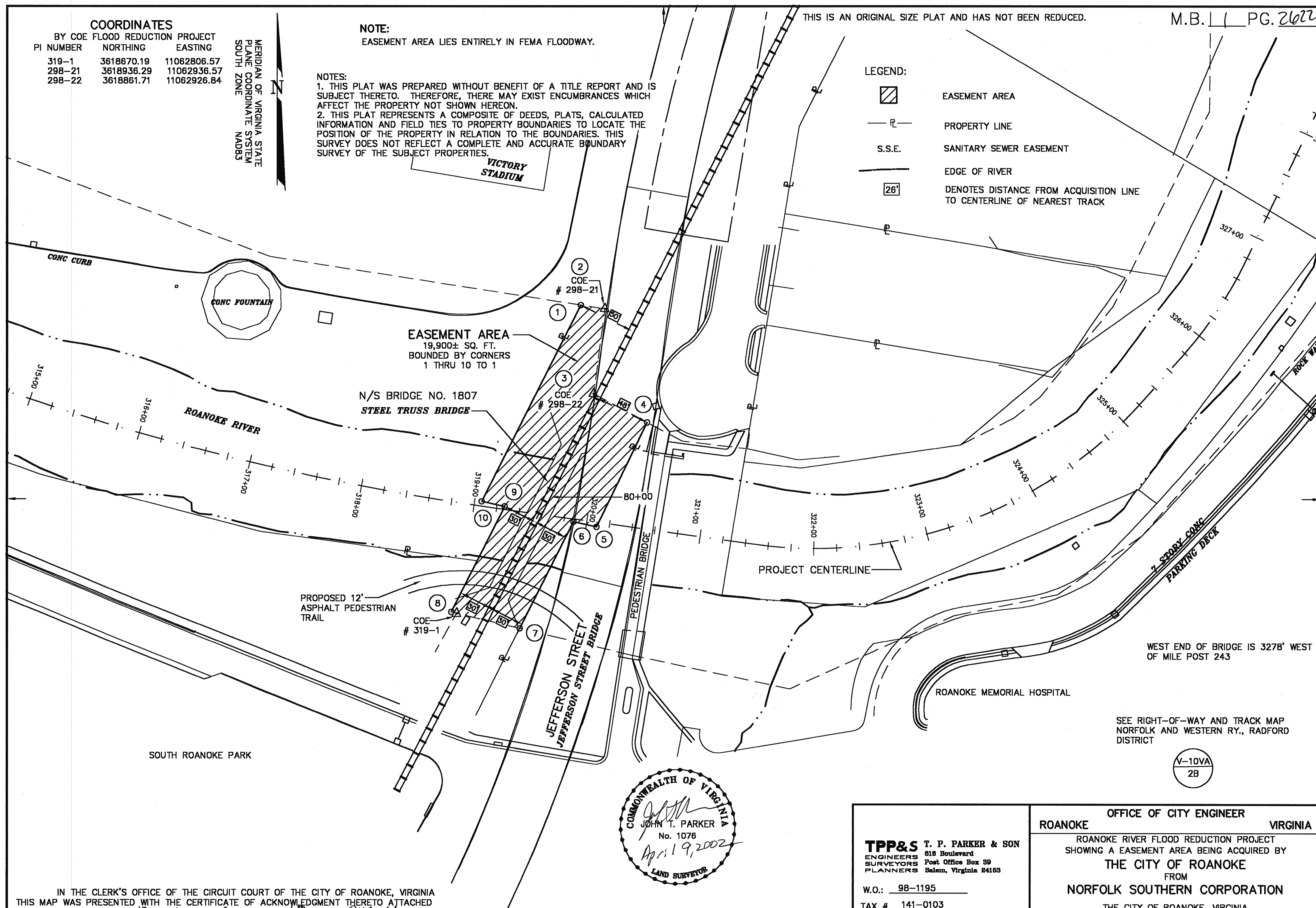
NOTES:
1. THIS PLAT WAS PREPARED WITHOUT BENEFIT OF A TITLE REPORT AND IS SUBJECT THERETO. THEREFORE, THERE MAY EXIST ENCUMBRANCES WHICH AFFECT THE PROPERTY NOT SHOWN HEREON.
2. THIS PLAT REPRESENTS A COMPOSITE OF DEEDS, PLATS, CALCULATED INFORMATION AND FIELD TIES TO PROPERTY BOUNDARIES TO LOCATE THE POSITION OF THE PROPERTY IN RELATION TO THE BOUNDARIES. THIS SURVEY DOES NOT REFLECT A COMPLETE AND ACCURATE BOUNDARY SURVEY OF THE SUBJECT PROPERTIES.

THIS IS AN ORIGINAL SIZE PLAT AND HAS NOT BEEN REDUCED.

M.B. 1 PG. 2622

LEGEND:

-  EASEMENT AREA
-  PROPERTY LINE
-  S.S.E. SANITARY SEWER EASEMENT
-  EDGE OF RIVER
-  26' DENOTES DISTANCE FROM ACQUISITION LINE TO CENTERLINE OF NEAREST TRACK



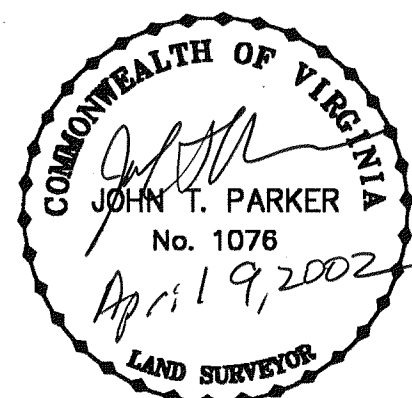
SOUTH ROANOKE PARK

PROPOSED 12'
ASPHALT PEDESTRIAN
TRAIL

EASEMENT AREA
19,900± SQ. FT.
BOUNDED BY CORNERS
1 THRU 10 TO 1

N/S BRIDGE NO. 1807
STEEL TRUSS BRIDGE

JEFFERSON STREET
JEFFERSON STREET BRIDGE

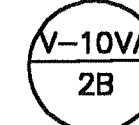


PROJECT CENTERLINE

ROANOKE MEMORIAL HOSPITAL

WEST END OF BRIDGE IS 3278' WEST
OF MILE POST 243

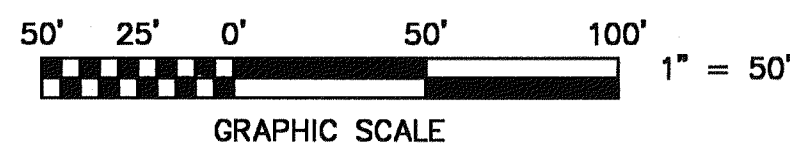
SEE RIGHT-OF-WAY AND TRACK MAP
NORFOLK AND WESTERN RY., RADFORD
DISTRICT



IN THE CLERK'S OFFICE OF THE CIRCUIT COURT OF THE CITY OF ROANOKE, VIRGINIA
THIS MAP WAS PRESENTED WITH THE CERTIFICATE OF ACKNOWLEDGMENT THERETO ATTACHED
ADMITTED TO RECORD AT 10:47 O'CLOCK A.M. ON THIS 6TH DAY OF August, 2003.

TESTE: ARTHUR B. CRUSH, III
CLERK

BY: *Janina Miller*
DEPUTY CLERK



TPP&S T. P. PARKER & SON
ENGINEERS 618 Boulevard
SURVEYORS Post Office Box 39
PLANNERS Salem, Virginia 24163

W.O.: 98-1195
TAX # 141-0103
N.B. N/A DRAWN JTP, JR.
CALC. CHK'D JTP
CLOSED: JTP, JR.

ROANOKE OFFICE OF CITY ENGINEER VIRGINIA

ROANOKE RIVER FLOOD REDUCTION PROJECT
SHOWING A EASEMENT AREA BEING ACQUIRED BY
THE CITY OF ROANOKE
FROM
NORFOLK SOUTHERN CORPORATION

THE CITY OF ROANOKE, VIRGINIA

SCALE: 1" = 50'
DATE: 9 APRIL 2002
PLAN NO. 6444-502

APPROVED: *Chris C. Quinn* 8.4.03
CITY ENGINEER

M.B. 1 PG. 2622