

| COORDINATES | | |
|-------------|-----------------|-------------|
| BY COE | FLOOD REDUCTION | PROJECT |
| PI NUMBER | NORTHING | EASTING |
| 1 | 3619978.63 | 11083570.11 |
| 2 | 3620021.58 | 11083484.70 |
| 3 | 3620334.27 | 11083634.48 |
| 4 | 3620313.04 | 11083690.03 |
| 5 | 3620066.59 | 11083574.04 |




NOTE:
SUBSURFACE EASEMENT AREA LIES ENTIRELY IN FEMA FLOODWAY.

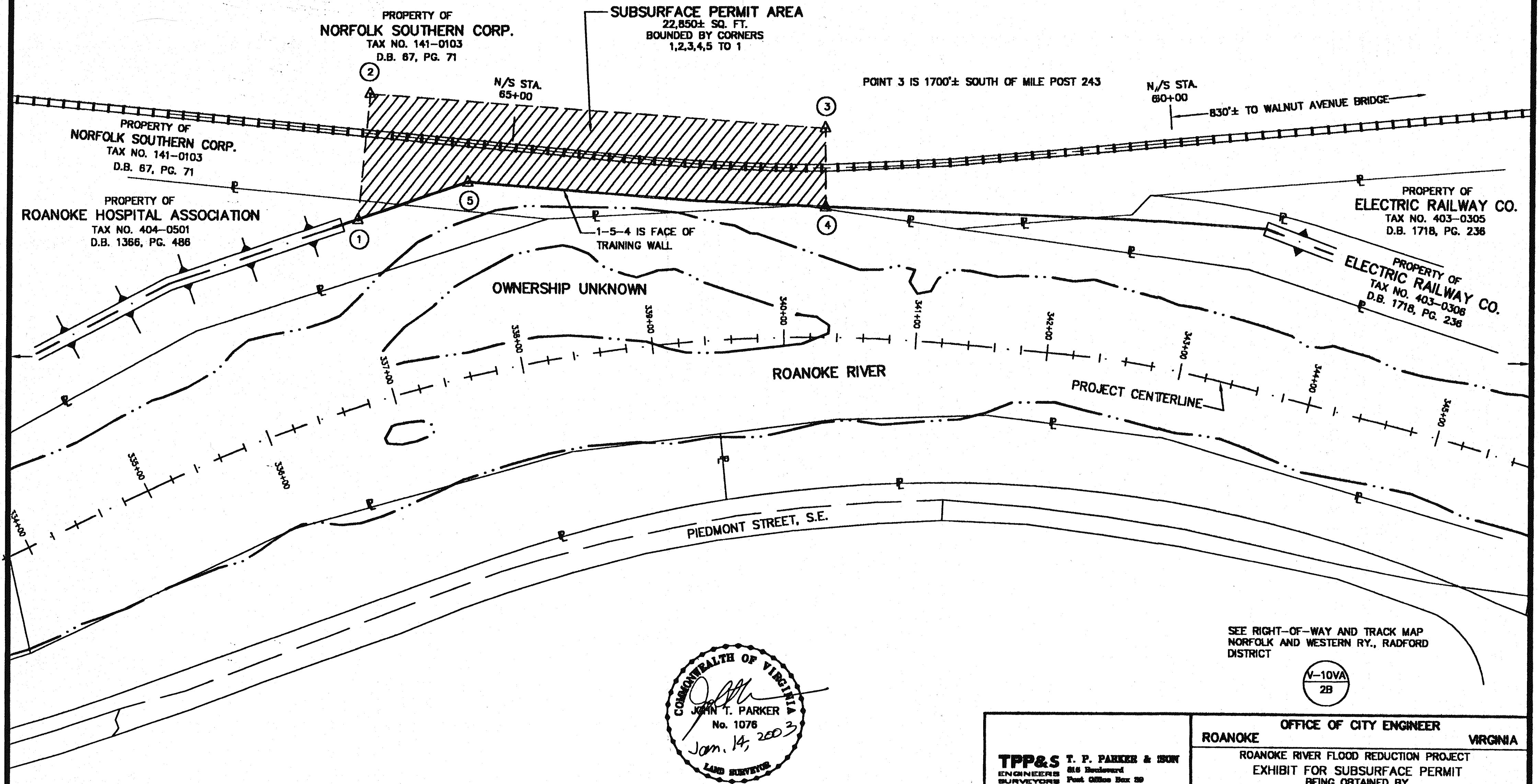
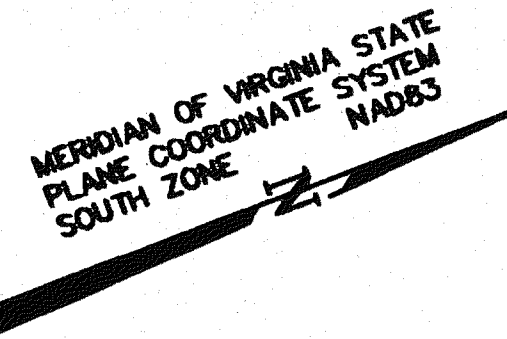
THIS IS AN ORIGINAL SIZE PLAT AND HAS NOT BEEN REDUCED.

M.B. 1 PG. 2625

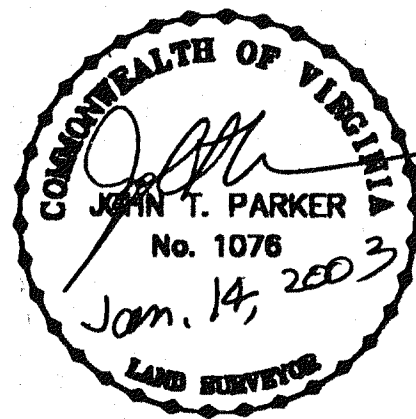
NOTES:
1. THIS PLAT WAS PREPARED WITH BENEFIT OF A TITLE REPORT PREPARED BY D. HARDIE, TITLE RESEARCH, LTD., DATED MAY 10, 2002 AND IS SUBJECT THERETO.
2. THIS PLAT REPRESENTS A COMPOSITE OF DEEDS, PLATS, CALCULATED INFORMATION AND FIELD TIES TO PROPERTY BOUNDARIES TO LOCATE THE POSITION OF THE EASEMENT IN RELATION TO THE BOUNDARIES. THIS SURVEY DOES NOT REFLECT A COMPLETE AND ACCURATE BOUNDARY SURVEY OF THE SUBJECT PROPERTIES.

LEGEND:

-  SUBSURFACE EASEMENT
-  PROPERTY LINE
-  EDGE OF RIVER



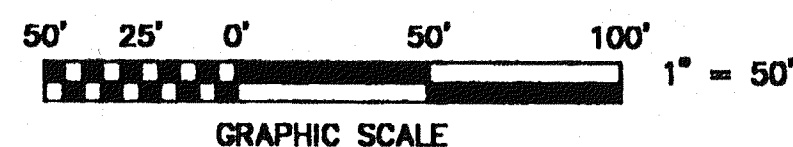
SEE RIGHT-OF-WAY AND TRACK MAP
NORFOLK AND WESTERN RY., RADFORD
DISTRICT



IN THE CLERK'S OFFICE OF THE CIRCUIT COURT OF THE CITY OF ROANOKE, VIRGINIA
THIS MAP WAS PRESENTED WITH THE CERTIFICATE OF ACKNOWLEDGMENT THERETO ATTACHED
ADMITTED TO RECORD AT 10:25 O'CLOCK A.M. ON THIS 16 DAY OF August, 2003.

TESTE: ARTHUR B. CRUSH, III
CLERK

BY: *James M. Miller*
DEPUTY CLERK



| | | |
|--|---|---|
| TPP&S T. P. PARKER & SON ENGINEERS 616 Boulevard SURVEYORS Post Office Box 20 PLANNERS Salem, Virginia 24183 W.O.: 98-1195 TAX # _____ N.B. N/A DRAWN: JTP, JR. CALC. CHK'D: PJB CLOSED: JTP, JR. | ROANOKE OFFICE OF CITY ENGINEER VIRGINIA ROANOKE RIVER FLOOD REDUCTION PROJECT EXHIBIT FOR SUBSURFACE PERMIT BEING OBTAINED BY THE CITY OF ROANOKE FROM NORFOLK SOUTHERN CORPORATION THE CITY OF ROANOKE, VIRGINIA | |
| | SCALE: 1" = 50' DATE: 14 JANUARY 2003 PLAN NO. 6444-501 | APPROVED: <i>Thuy S. Oliver</i> 8-4-03 CITY ENGINEER |

0661-62

M.B. 1 PG. 2625