

COORDINATES

BY COE FLOOD REDUCTION PROJECT

PI NUMBER	NORTHING	EASTING
218-9	3624703.43	11058380.76
218-10	3624635.57	11058493.70
218-11	3624587.75	11058562.46
218-12	3624529.02	11058634.35
218-13	3624473.71	11058694.89
218-14	3624375.67	11058793.22
218-15	3624253.89	11058910.18
218-16	3624155.29	11058997.31
218-17	3624075.92	11059060.87
218-18	3624027.41	11059097.28
218-19	3623955.14	11059147.82
218-20	3623888.01	11059189.16

NOTE:

EASEMENT AREA LIES ENTIRELY IN FEMA FLOODWAY.

THIS IS AN ORIGINAL SIZE PLAT AND HAS NOT BEEN REDUCED.

M.B. 1 PG. 2628

LEGEND:



EASEMENT AREA



PROPERTY LINE



EDGE OF RIVER



26' DENOTES DISTANCE FROM ACQUISITION LINE TO CENTERLINE OF NEAREST TRACK

N/S STA.
1850+00

MERIDIAN OF VIRGINIA STATE
PLANE COORDINATE SYSTEM
NAD83

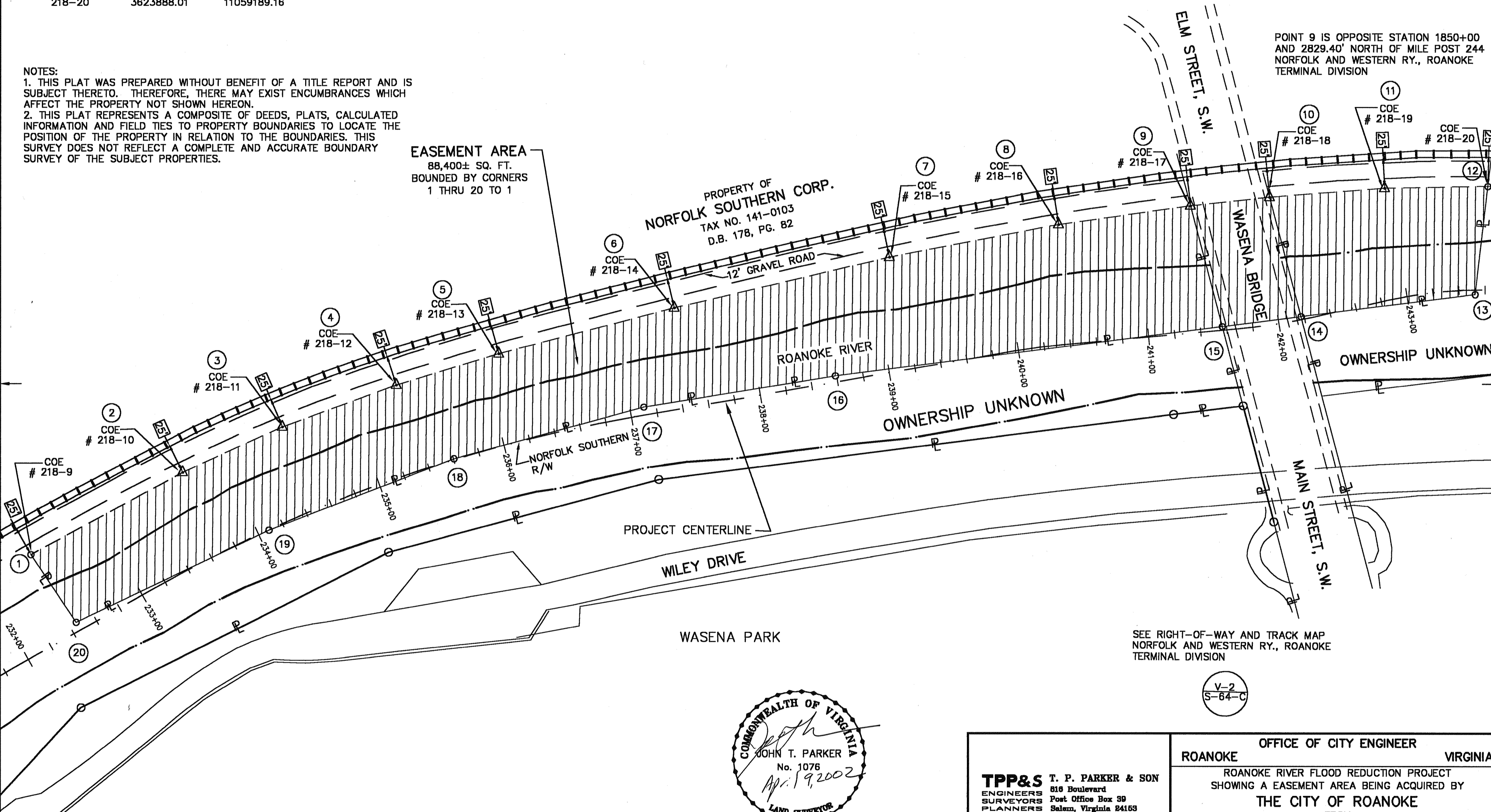
NOTES:

1. THIS PLAT WAS PREPARED WITHOUT BENEFIT OF A TITLE REPORT AND IS SUBJECT THERETO. THEREFORE, THERE MAY EXIST ENCUMBRANCES WHICH AFFECT THE PROPERTY NOT SHOWN HEREON.
2. THIS PLAT REPRESENTS A COMPOSITE OF DEEDS, PLATS, CALCULATED INFORMATION AND FIELD TIES TO PROPERTY BOUNDARIES TO LOCATE THE POSITION OF THE PROPERTY IN RELATION TO THE BOUNDARIES. THIS SURVEY DOES NOT REFLECT A COMPLETE AND ACCURATE BOUNDARY SURVEY OF THE SUBJECT PROPERTIES.

EASEMENT AREA
88,400± SQ. FT.
BOUNDED BY CORNERS
1 THRU 20 TO 1

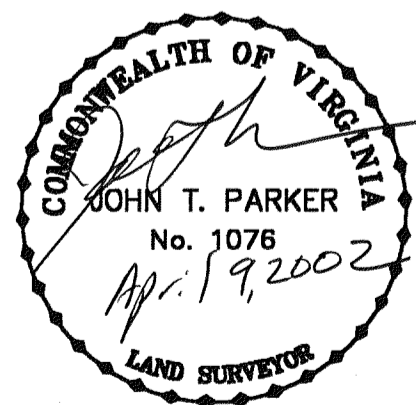
PROPERTY OF
NORFOLK SOUTHERN CORP.
TAX NO. 141-0103
D.B. 178, PG. 82

POINT 9 IS OPPOSITE STATION 1850+00
AND 2829.40' NORTH OF MILE POST 244
NORFOLK AND WESTERN RY., ROANOKE
TERMINAL DIVISION



SEE RIGHT-OF-WAY AND TRACK MAP
NORFOLK AND WESTERN RY., ROANOKE
TERMINAL DIVISION

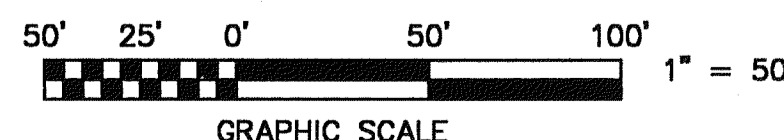
V-2
S-64-C



IN THE CLERK'S OFFICE OF THE CIRCUIT COURT OF THE CITY OF ROANOKE, VIRGINIA
THIS MAP WAS PRESENTED WITH THE CERTIFICATE OF ACKNOWLEDGMENT THERETO ATTACHED
ADMITTED TO RECORD AT 10:30 O'CLOCK A.M. ON THIS 10th DAY OF August, 2002

TESTE: ARTHUR B. CRUSH, III
CLERK

BY: *Samuel M. ...*
DEPUTY CLERK



TPP&S T. P. PARKER & SON
ENGINEERS 516 Boulevard
SURVEYORS Post Office Box 39
PLANNERS Salem, Virginia 24153

W.O.: 98-1195
TAX # 141-0103
N.B. N/A DRAWN JTP, JR.
CALC. CHK'D JTP
CLOSED: JTP, JR.

ROANOKE OFFICE OF CITY ENGINEER VIRGINIA

ROANOKE RIVER FLOOD REDUCTION PROJECT
SHOWING A EASEMENT AREA BEING ACQUIRED BY
THE CITY OF ROANOKE
FROM
NORFOLK SOUTHERN CORPORATION

THE CITY OF ROANOKE, VIRGINIA

SCALE: 1" = 50'

DATE: 9 APRIL 2002

PLAN NO. 6444-505

APPROVED: *8.4.03*

CITY ENGINEER

0652

M.B. 1 PG. 2628