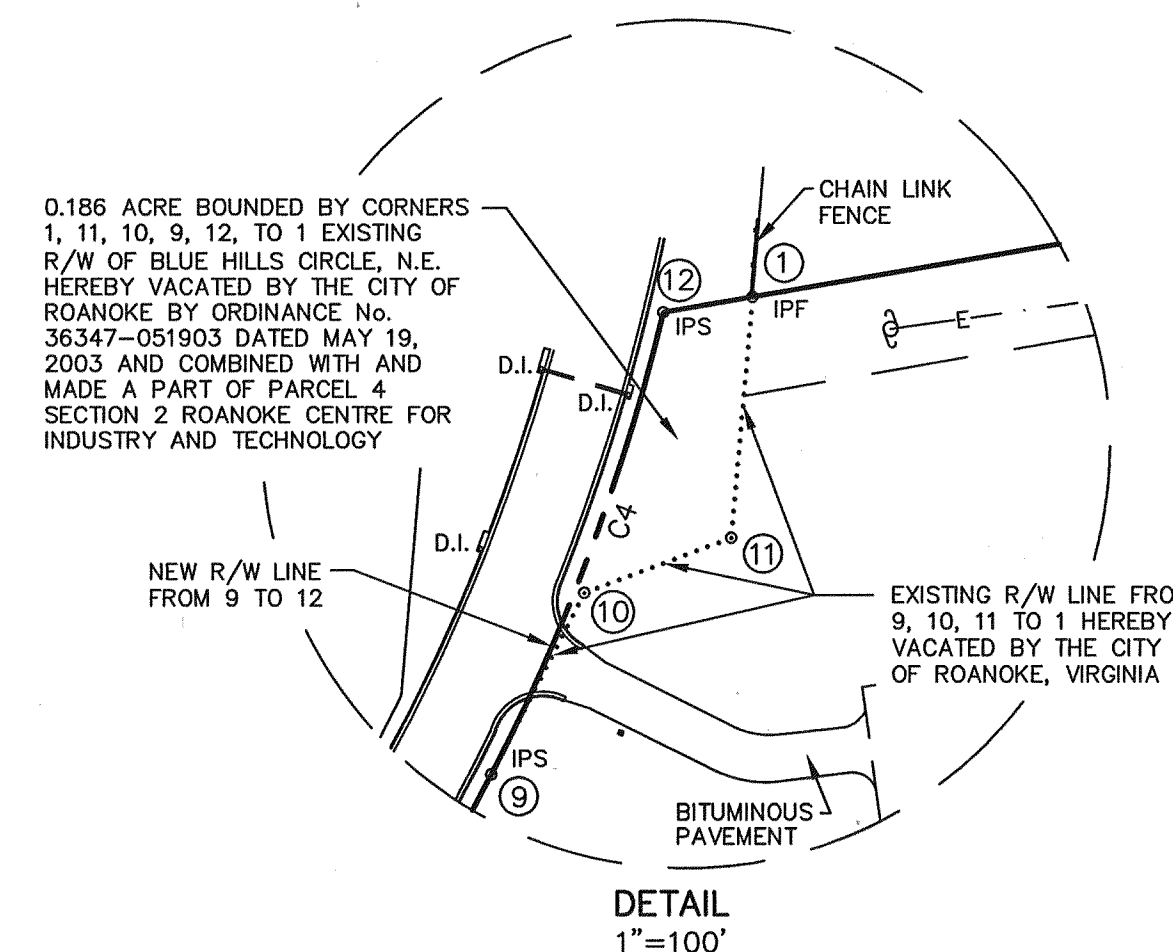
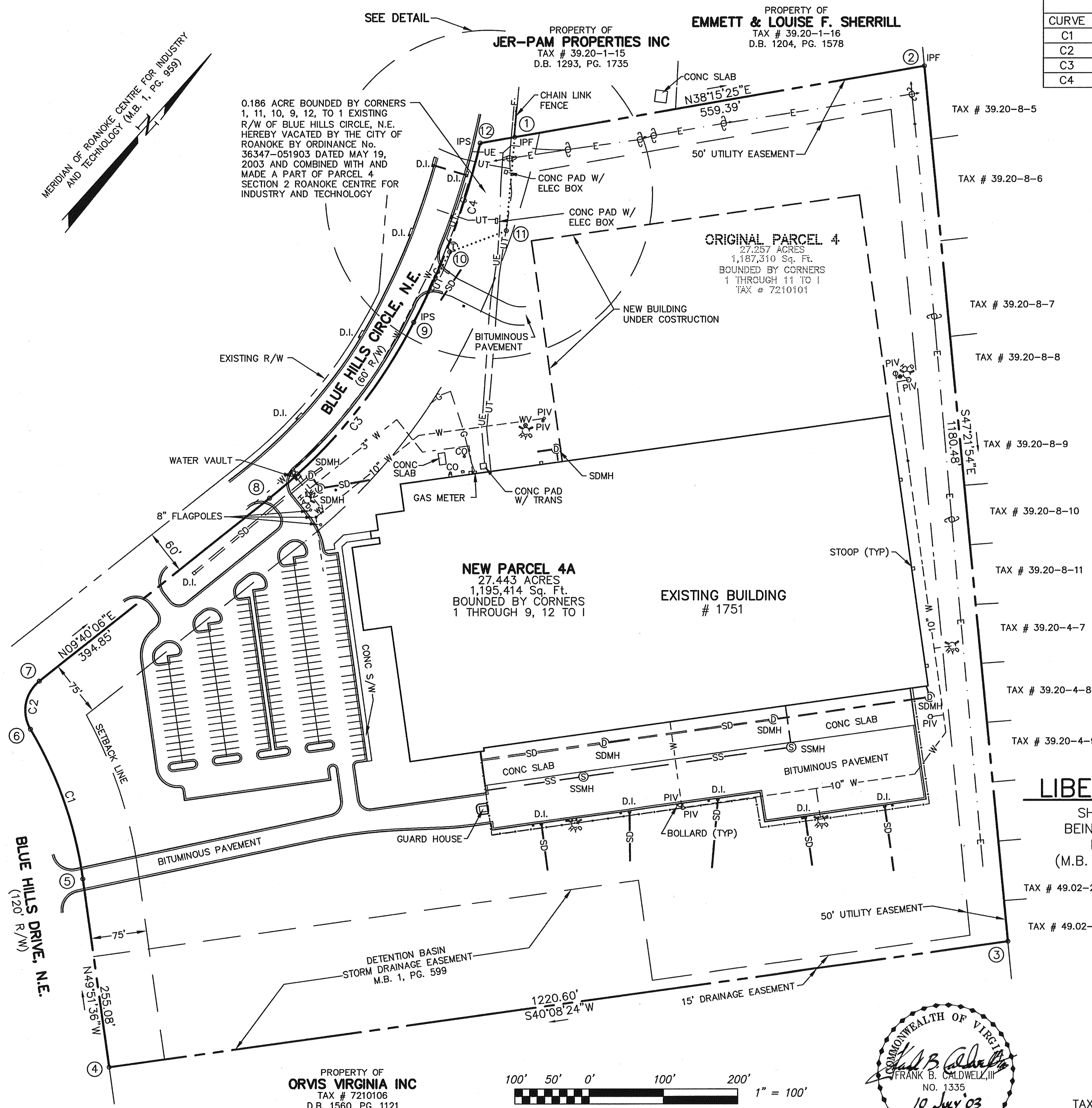


CURVE TABLE						
CURVE	LENGTH	RADIUS	DELTA	TANGENT	BEARING	CHORD
C1	214.28	540.00	22°44'09"	108.57	N61°13'41"W	212.88
C2	71.79	50.00	82°15'51"	43.67	N31°27'50"W	65.78
C3	308.23	723.64	24°24'17"	156.49	N02°32'03"W	305.90
C4	257.12	1057.14	13°56'07"	129.20	N21°28'45"W	256.48

LINE TABLE		
LINE	BEARING	DISTANCE
9-10	N14°44'11"W	106.00
10-11	N27°33'44"E	81.46
11-1	N36°50'29"W	126.00
1-12	S38°15'25"W	46.99

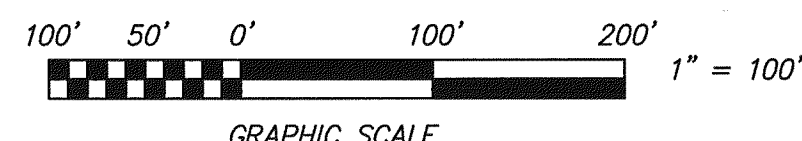
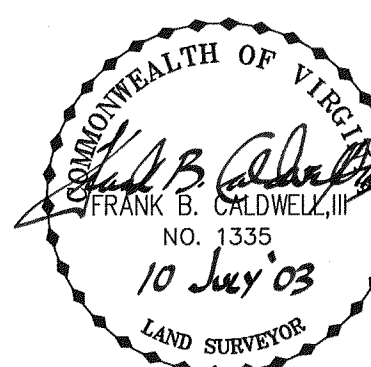


RESUBDIVISION PLAT FOR **LIBERTY PROPERTY LIMITED PARTNERSHIP**

SHOWING 0.186 AC. OF RIGHT OF WAY OF BLUE HILLS CIRCLE, N.E.
BEING VACATED BY THE CITY OF ROANOKE AND BEING COMBINED WITH
PARCEL 4, ROANOKE CENTRE FOR INDUSTRY AND TECHNOLOGY
(M.B. 1, PG. 629) CREATING NEW PARCEL 4A CONTAINING 27.443 ACRES.

SITUATE BLUE HILLS DRIVE, NE
CITY OF ROANOKE, VIRGINIA

CWA
CALDWELL WHITE ASSOCIATES
ENGINEERS / SURVEYORS / PLANNERS
4203 MELROSE AVENUE, NW
P.O. BOX 6260
ROANOKE, VIRGINIA 24017
(540) 366-3400 FAX: (540) 366-8702



THIS IS AN ORIGINAL SIZE DRAWING
AND HAS NOT BEEN REDUCED.

TAX NO.: 7210101
DRAWN: JW
CALC.: JW CHK'D.: FBC, III
CLOSED: JW

SHEET 2 OF 2

SCALE: 1" = 100'
W.O.: 02-0127
N.B.: WES-21
DATE: JUNE 20, 2003
REVISED: JULY 10, 2003

0674