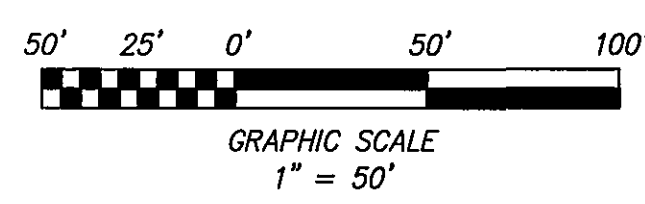
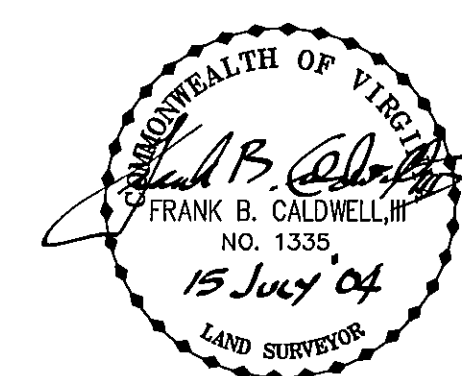
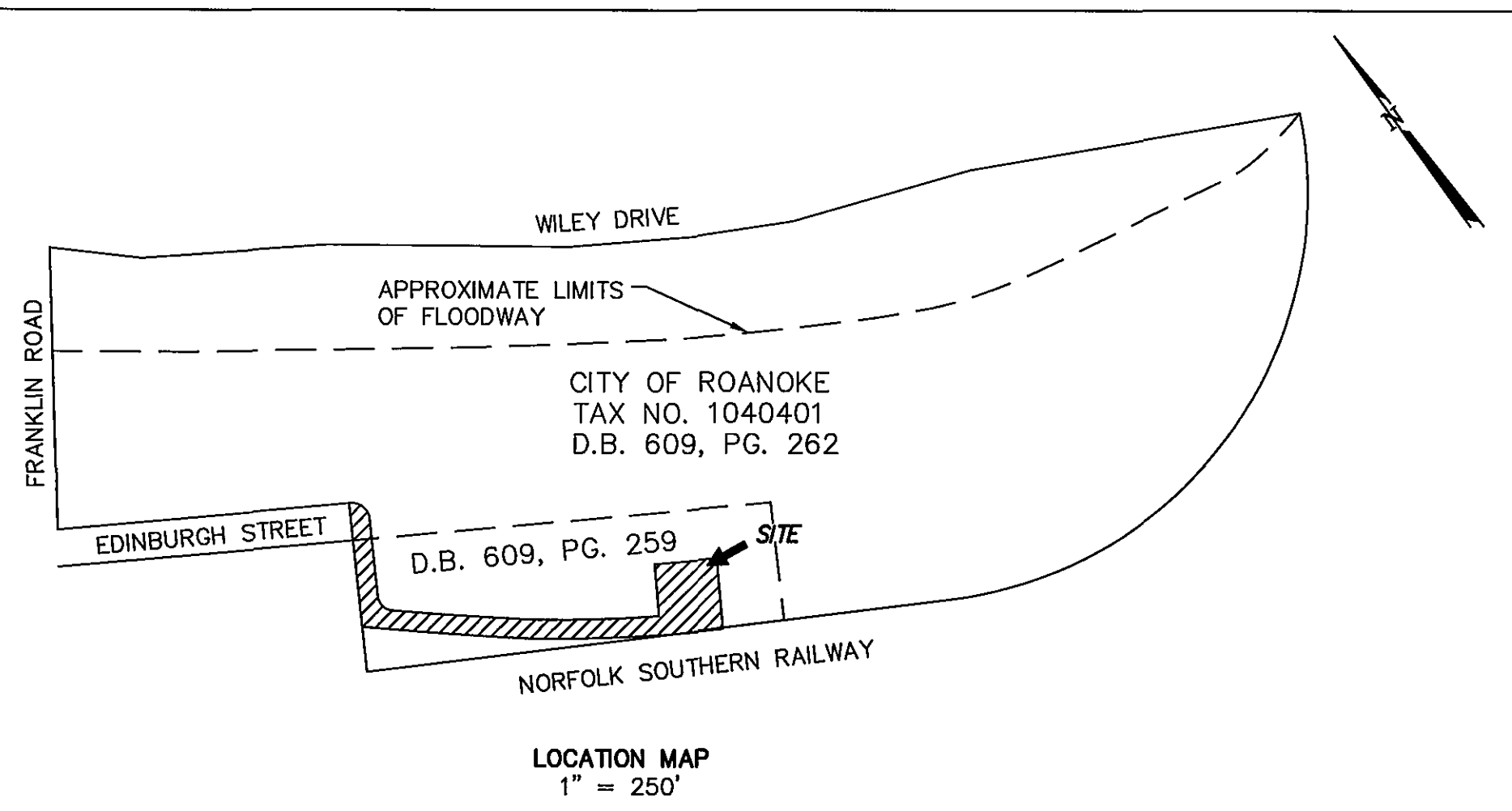
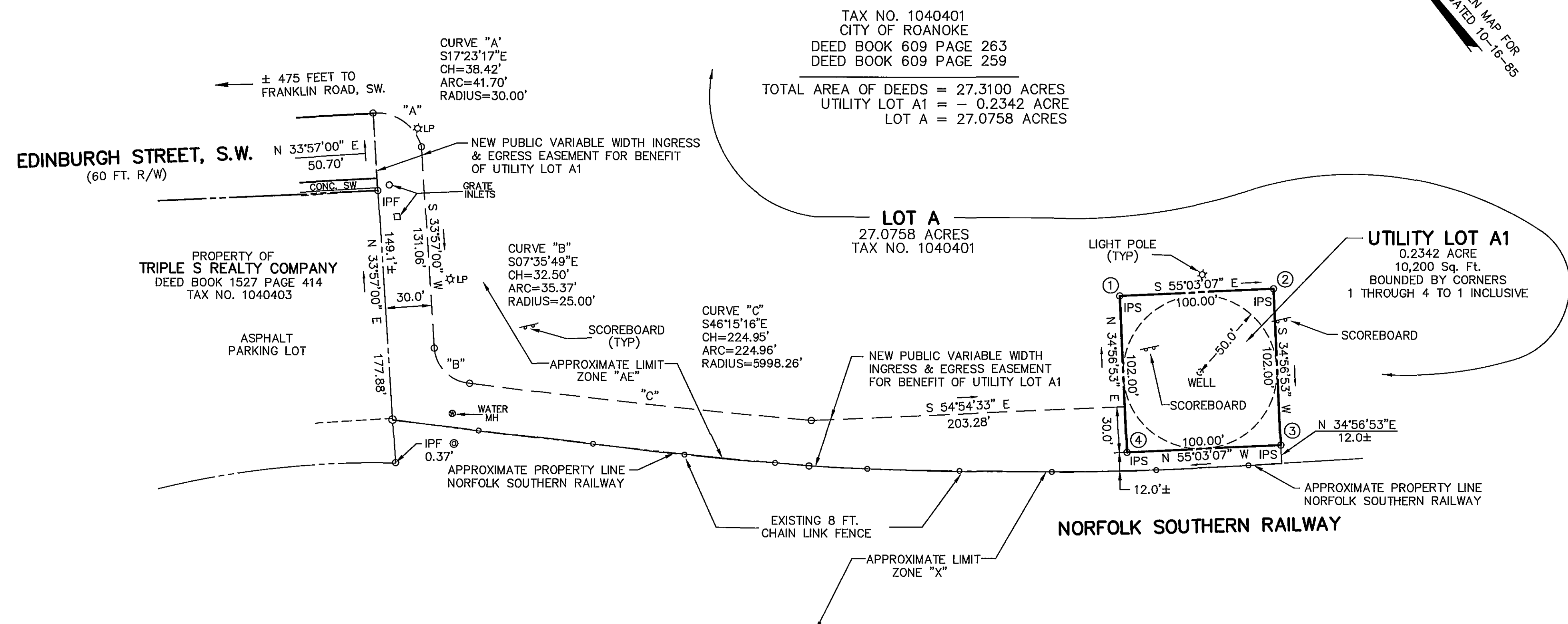


2172

MERIDIAN BASED ON LUNSDEN MAP FOR
TRIPLE S REALTY COMPANY, DATED 10-16-85



RESUBDIVISION PLAT
FOR
CITY OF ROANOKE, VIRGINIA

SHOWING THE RESUBDIVISION OF 27.31 ACRES
(D.B. 609 PG., 262 AND D.B. 609 PG. 259)
CREATING HEREON

LOT A - 27.0758 ACRES
UTILITY LOT A1 - 0.2342 ACRE

SITUATE EDINBURGH STREET, S. W.
CITY OF ROANOKE, VIRGINIA

CWA
CALDWELL WHITE ASSOCIATES
ENGINEERS / SURVEYORS / PLANNERS
4203 MELROSE AVENUE, NW
P.O. BOX 8280
ROANOKE, VIRGINIA 24017

TAX NO.: 1040401
DRAWN: JW
CALC.: JW CHK'D.: FBC, III
CLOSED: JW

SCALE: 1" = 50'
DATE: JUNE 21, 2004
N.B.: CITY OF ROANOKE 2
W.O.: 04-0065
SHEET 2 OF 2