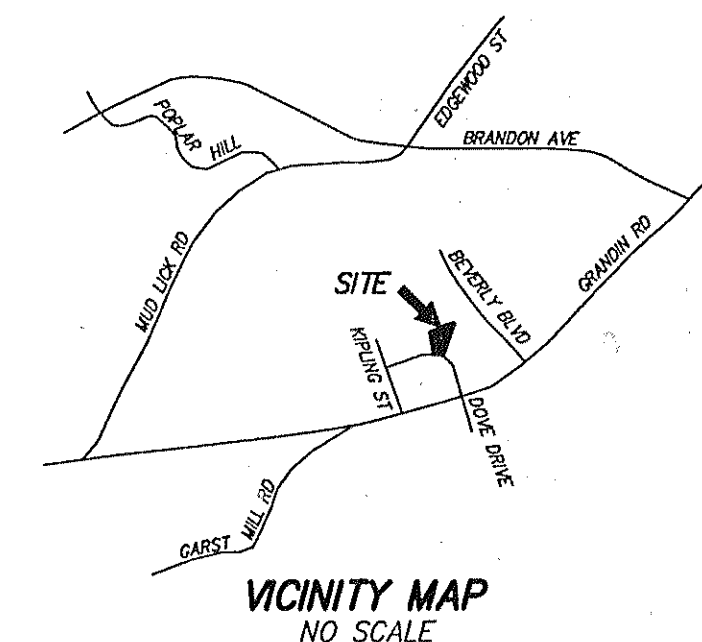
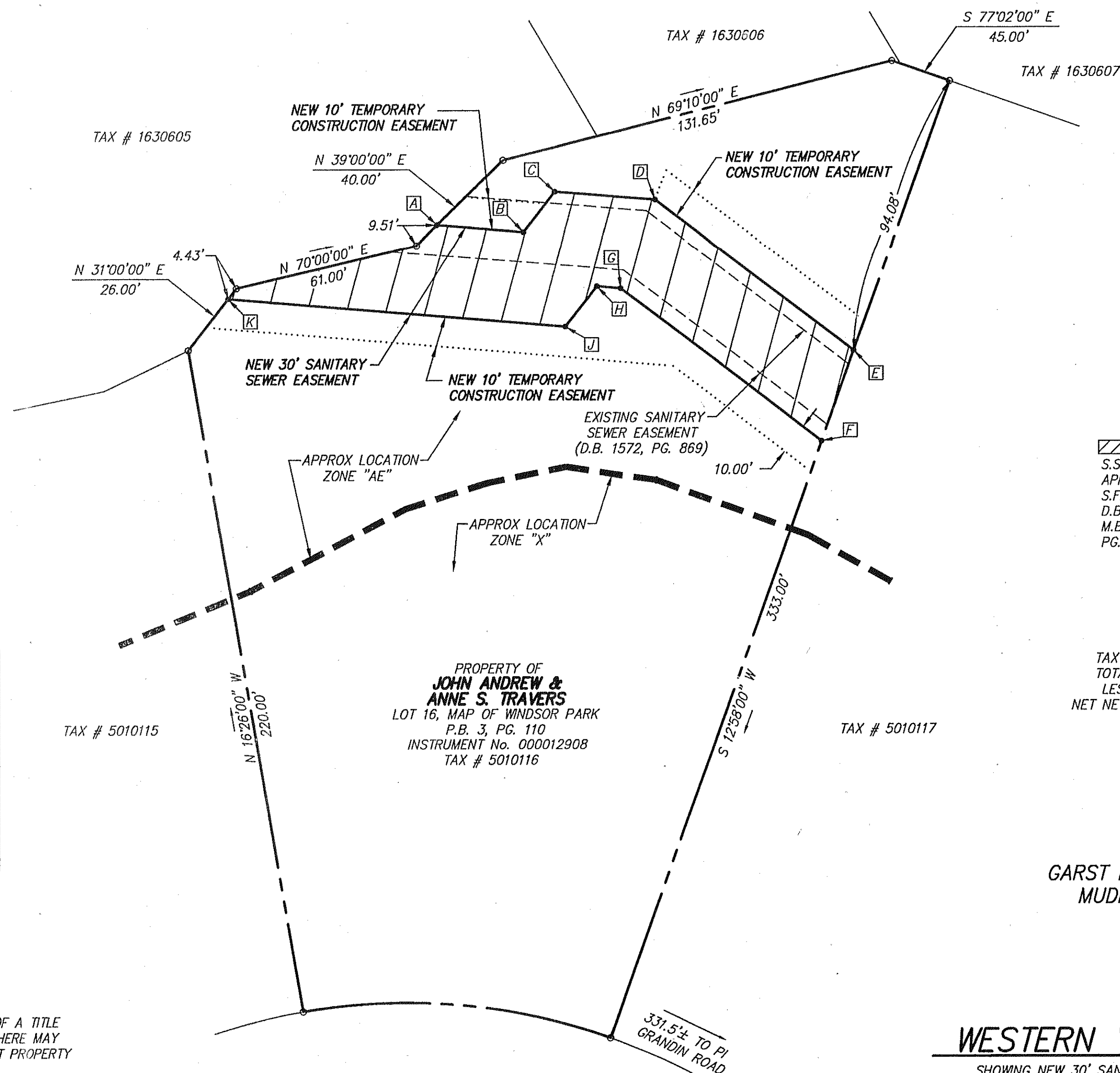


MERIDIAN OF MAP OF WINDSOR PARK
(P.B. 3, PG. 110)



LEGEND

//// = NEW SANITARY SEWER EASEMENT
S.S.E. = SANITARY SEWER EASEMENT
APPROX = APPROXIMATE
S.F. = SQUARE FEET
D.B. = DEED BOOK
M.B. = MAP BOOK
PG. = PAGE

TAX # 5010116
TOTAL NEW 30' S.S.E. 5,633 S.F.
LESS EXISTING S.S.E. - 2,705 S.F.
NET NEW SANITARY S.S.E. 2,928 S.F.

GARST MILL CORRECTIVE ACTION PROJECT
MUDLICK CREEK INTERCEPTOR 2006

EASEMENT PLAT
FOR

WESTERN VIRGINIA WATER AUTHORITY

SHOWING NEW 30' SANITARY SEWER EASEMENT AND 10' TEMPORARY CONSTRUCTION
EASEMENTS HEREBY DEDICATED TO WESTERN VIRGINIA WATER AUTHORITY BY JOHN ANDREW &
ANNE S. TRAVERS (INSTRUMENT No. 000012908) LOT 16, MAP OF WINDSOR PARK P.B. 3, PG. 110.

SITUATE DOVER DRIVE, S.W.
CITY OF ROANOKE, VIRGINIA



CALDWELL WHITE ASSOCIATES

ENGINEERS / SURVEYORS / PLANNERS
4203 MELROSE AVENUE, NW
P.O. BOX 6260
ROANOKE, VIRGINIA 24017
(540) 366-3400 FAX: (540) 366-8702

TAX NO. 5010116
DATE: JUNE 15, 2006
CALC. JW CHK'D FBC
CLOSED: JW

SCALE: 1" = 30'
N.B.: MUDLICK 1
DRAWN: JW
W.O.: 05-0102-12

M.B. 1, PG. 3042

LINE TABLE

LINE	BEARING	DISTANCE
A-B	N 88°13'06" E	28.54'
B-C	N 31°08'36" E	16.90'
C-D	N 88°00'03" E	32.91'
D-E	S 59°06'24" E	82.10'
E-F	S 12°58'00" W	31.53'
F-G	N 59°06'24" W	82.95'
G-H	S 88°00'03" W	7.82'
H-J	S 31°08'36" W	16.97'
J-K	S 88°13'06" W	111.40'

NOTES:

- THIS PLAT WAS PREPARED WITHOUT THE BENEFIT OF A TITLE REPORT BY A LICENSED ATTORNEY, THEREFORE, THERE MAY EXIST ENCUMBRANCES WHICH AFFECT THE SUBJECT PROPERTY THAT MAY NOT BE SHOWN HEREON.
- THE SUBJECT PROPERTY LIES WITHIN THE LIMITS OF ZONE "X" AND ZONE "AE" AS SHOWN ON THE FEMA FLOOD INSURANCE RATE MAP, 51161C0044 D, EFFECTIVE DATE OCTOBER 15, 1993.
- THIS PLAT DOES NOT CONSTITUTE A BOUNDARY SURVEY BY CALDWELL WHITE ASSOCIATES.

IN THE CLERK'S OFFICE OF THE CIRCUIT COURT OF ROANOKE CITY, VIRGINIA, THIS MAP WAS PRESENTED WITH THE CERTIFICATE OF ACKNOWLEDGEMENT THEREON ATTACHED ADMITTED TO RECORD AT 4:22 O'CLOCK P.M. ON THIS 13th DAY OF September, 2006.

TESTE: BRENDA HAMILTON
CLERK

BY: Laura B. Caldwell
DEPUTY CLERK

