

NOTES:

1. THIS PLAT REPRESENTS A COMPOSITE OF DEEDS, PLATS, CALCULATED INFORMATION AND FIELD TIES TO LOCATE PROPERTY LINES, AND THE STREAM. THIS PLAT DOES NOT REFLECT A COMPLETE AND ACCURATE BOUNDARY SURVEY OF THE SUBJECT PROPERTY.
2. THIS PLAT WAS PREPARED WITHOUT THE BENEFIT OF A TITLE REPORT AND MAY NOT SHOW ALL ENCUMBRANCES ON THE PROPERTY.
3. RECORDATION OF THIS PLAT DOES NOT CONSTITUTE CONVEYANCE OF PROPERTY RIGHTS.

IN THE CLERK'S OFFICE OF THE CIRCUIT COURT OF ROANOKE CITY, VIRGINIA, THIS MAP WAS PRESENTED WITH THE CERTIFICATE OF ACKNOWLEDGEMENT THERE TO ATTACHED ADMITTED TO RECORD AT 2:16 O'CLOCK P.M. ON THIS 19 DAY OF NOVEMBER, 2006.
December

TESTE: BRENDA HAMILTON
CLERK

BY: Melinda M. Thomas
DEPUTY CLERK

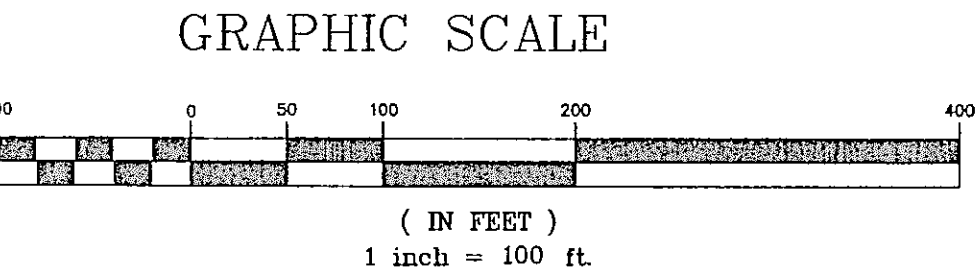
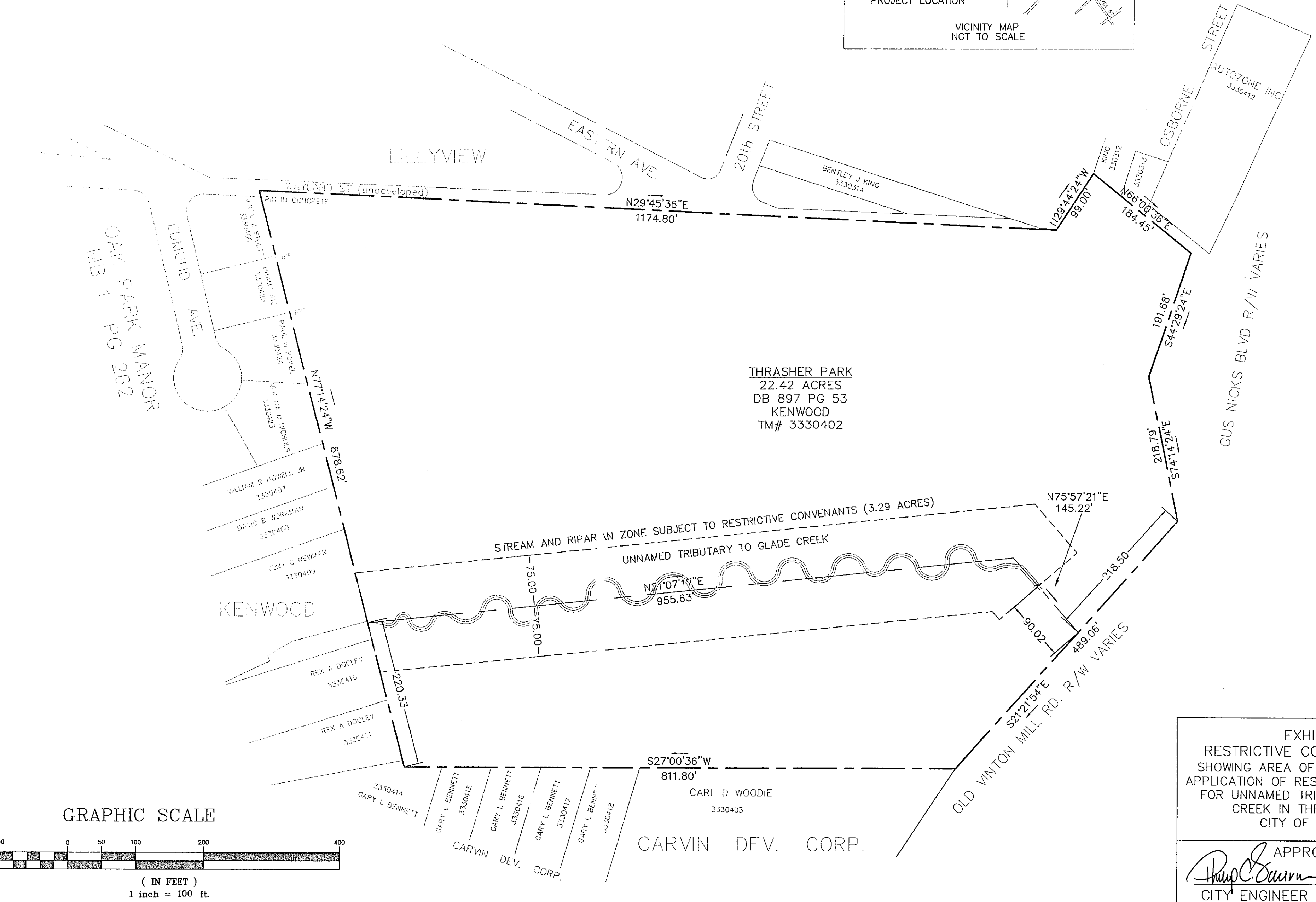
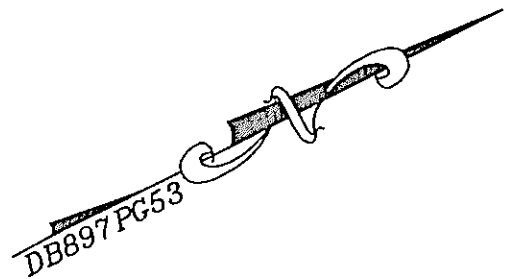
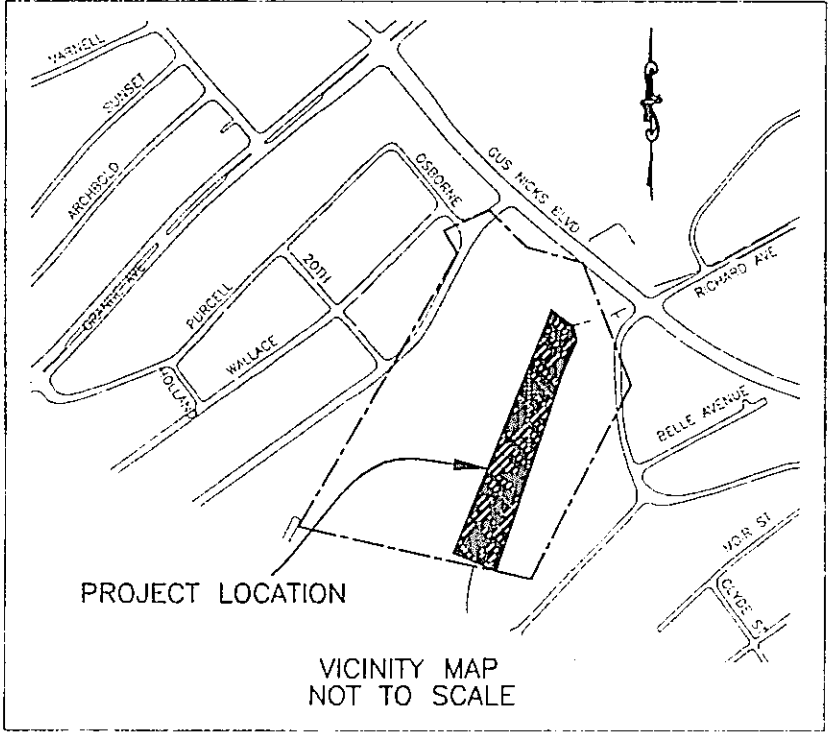


EXHIBIT A
RESTRICTIVE COVENANTS PLAT
SHOWING AREA OF RESTORATION AND
APPLICATION OF RESTRICTIVE COVENANTS
FOR UNNAMED TRIBUTARY TO GLADE
CREEK IN THRASHER PARK
CITY OF ROANOKE

APPROVED
David B. Eakin
CITY ENGINEER

12.13.06
DATE

PHONE: (540) 853-2731
FAX: (540) 853-1364
WWW.ROANOKEVA.GOV

215 CHURCH AVENUE, S.W.
ROOM 350
ROANOKE, VA 24011

OFFICE OF THE
CITY ENGINEER
ROANOKE

DATE: 06-06-06
DRAWN BY: R. EAKIN
SCALE: 1" = 100'

SHEET
1 OF 1