

BK 1pg3114



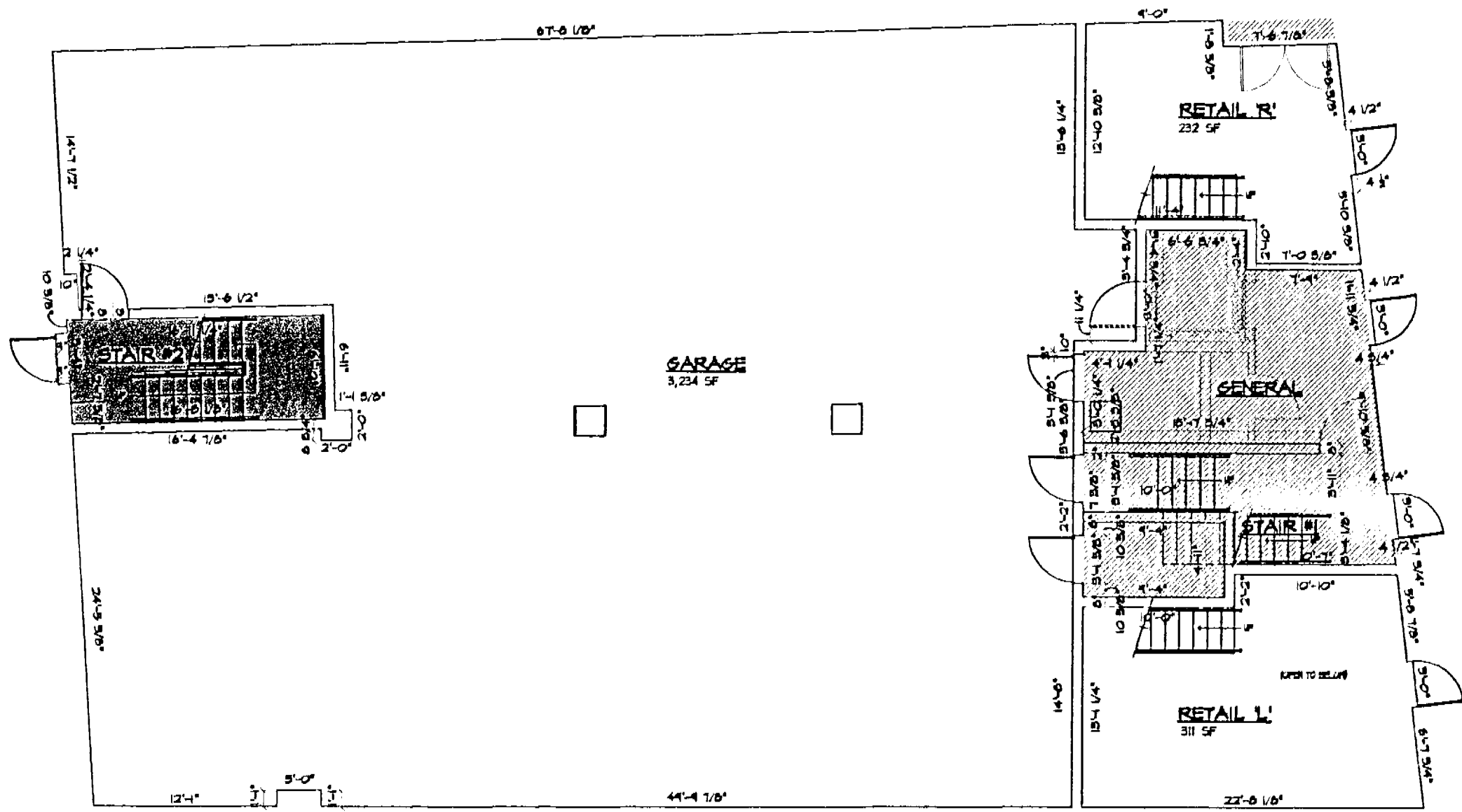
**HILL  
STUDIO**

Community Planning  
Landscape Architecture  
Architecture  
Historic Preservation

130 W. Campbell Ave. #W  
Roanoke, VA 24011

tel: 540-343-5283  
fax: 540-343-5425

www.hillstudio.com



In the Clerk's Office of the Circuit Court of the City of  
Roanoke, Virginia, this instrument is admitted to Record on  
Feb 21, 2007, at 3:45 o'clock P.m.

Tester: BRENDA S. HAMILTON, CLERK

By James B. Miller

**FIRST FLOOR PLAN**  
SCALE: 1/4" = 1'-0"

**LEGEND**

- GENERAL COMMON SPACE - 404 SF
- LIMITED COMMON SPACE - 115 SF
- TENANT PARKING - 3234 SF
- RETAIL SPACE - 542 SF
- 1 HOUR RATED PARTITION

**ARCHITECT'S CERTIFICATE**

I, TODD E. SETLIFF, A DULY LICENSED ARCHITECT IN THE COMMONWEALTH OF VIRGINIA, DO HEREBY CERTIFY THAT THESE PLANS ARE ACCURATE (WITHIN NOMINAL CONSTRUCTION TOLERANCES - BASE SHEETS PROVIDED BY SPECTRUM ENGINEERING) TO THE BEST OF MY KNOWLEDGE AND COMPLY WITH SECTION 55-78-58 OF THE CONDOMINIUM ACT AS AMENDED, AND THAT THE UNITS SHOWN HEREIN ARE NOT SUBSTANTIALLY COMPLETE.

8/8/06  
DATE

Todd E. Setliff  
TODD E. SETLIFF

RENOVATIONS  
**FIRST FLOOR PLAN**  
111 W. CAMPBELL AVE.  
ROANOKE, VIRGINIA



File: 06-01-06  
Title: 1/4" = 1'-0"  
Scale: NONE  
Drawn: JTES/PTM  
Checked By: TES  
Project No.: 0608

