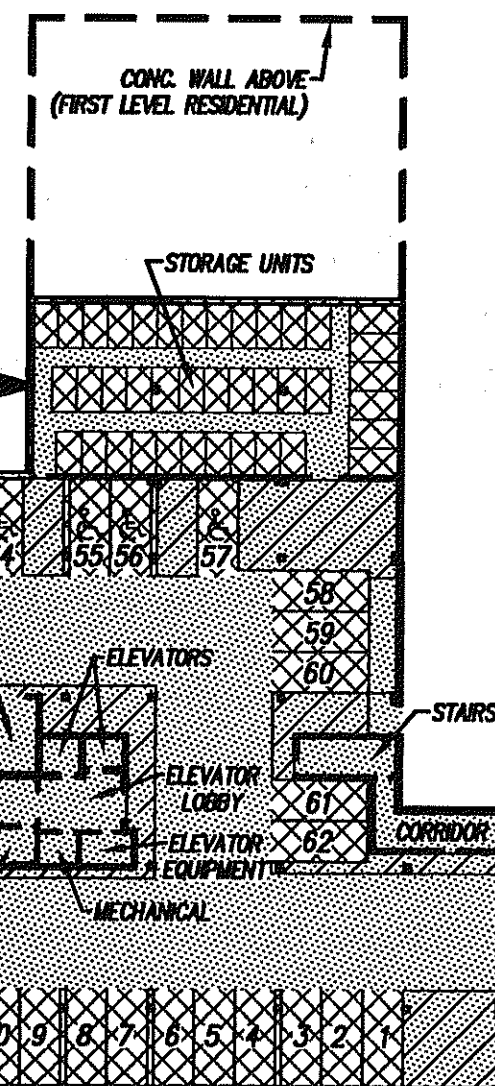
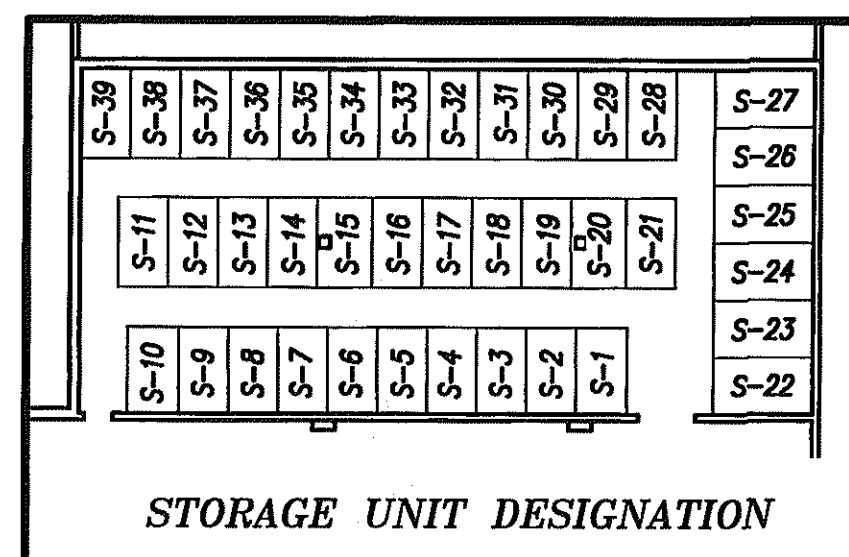


FRONT  
**FIRST LEVEL PARKING  
PARKING GARAGE UNIT**

AREA = 33,468 S.F.  
SCALE: 1" = 40'

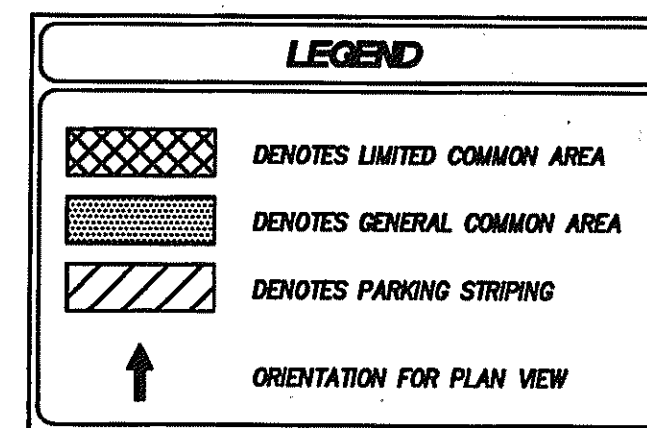
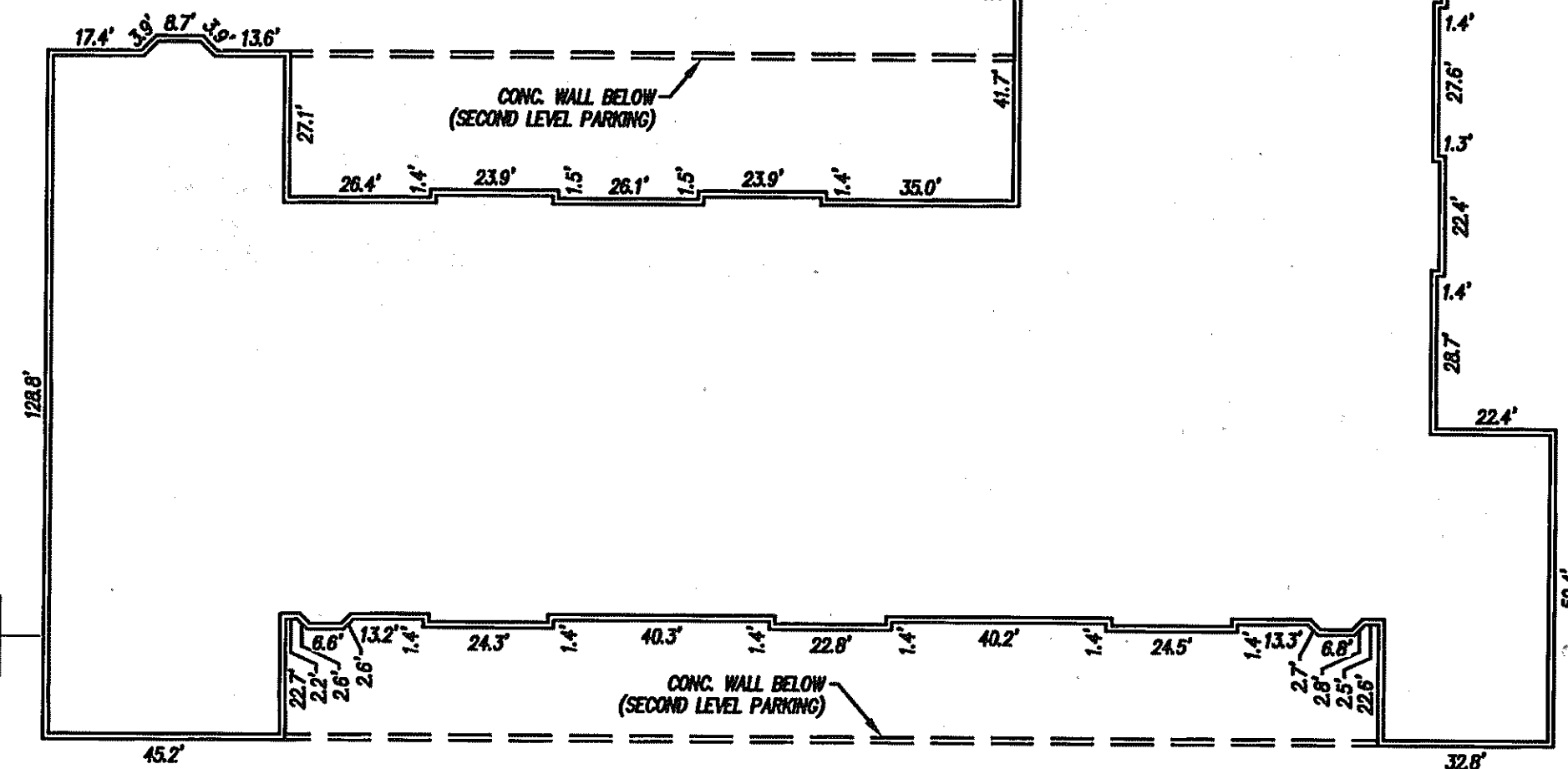


FRONT  
**SECOND LEVEL PARKING  
RESIDENTIAL PARKING**

SCALE: 1" = 40'

#### NOTES:

1. INCLUDED AS PART OF EACH UNIT IS THE DRY WALL COVERING ENCLOSING SUCH UNIT. ALL INTERIOR DIMENSIONS SHOWN ON THIS PLAT ARE MEASURED TO THE INSIDE FACE OF STUDS OR TO THE INSIDE FACE OF CONCRETE FOUNDATION WALLS.
2. ALL VERTICAL DIMENSIONS ARE MEASURED FROM SUB-FLOOR TO BOTTOM OF JOISTS.
3. UNIT DIMENSIONS SHOWN FOR UNIT TYPES A1, A2, B, D, E1, AND G ARE TYPICAL AND ARE BASED UPON THE MEDIAN OF FIELD MEASUREMENTS OF ALL UNITS OF THAT TYPE. UNIT DIMENSIONS SHOWN FOR ALL OTHER UNITS ARE THE ACTUAL FIELD MEASUREMENTS FOR THAT UNIT.
4. UNIT FLOOR AREAS SHOWN FOR UNIT TYPES A1, A2, B, D, E1, AND G ARE TYPICAL AND ARE BASED UPON THE MEDIAN OF ALL UNIT FLOOR AREAS OF THAT TYPE COMPUTED FROM FIELD MEASUREMENTS. THESE UNIT FLOOR AREAS ARE WITHIN 2% OF THE ACTUAL UNIT FLOOR AREA. UNIT FLOOR AREAS SHOWN FOR ALL OTHER UNITS ARE THE ACTUAL UNIT FLOOR AREAS COMPUTED FROM FIELD MEASUREMENTS.
5. SQUARE FOOTAGE SHOWN DOES NOT INCLUDE AREA FOR TERRACES, BALCONIES OR STORAGE ROOMS.

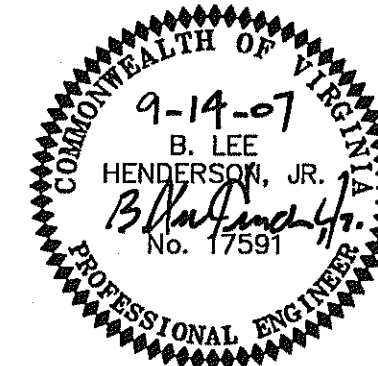


#### ENGINEER'S CERTIFICATE:

I, B. LEE HENDERSON, JR., REGISTERED ENGINEER IN THE COMMONWEALTH OF VIRGINIA, HEREBY CERTIFY THAT THIS PLAN, EXHIBIT "B", ACCURATELY SHOWS THE UNITS DELINEATED AND COMPLIES WITH THE PROVISIONS OF SECTION 55-79.58 PARAGRAPH (B) OF CONDOMINIUM ACT. I FURTHER CERTIFY THAT UNLESS NOTED OTHERWISE ALL UNITS DEPICTED HEREON HAVE BEEN SUBSTANTIALLY COMPLETED.

GIVEN UNDER MY HAND THIS 14<sup>TH</sup> DAY OF SEPTEMBER, 2007.

*B. Lee Henderson, Jr.*  
B. LEE HENDERSON, JR., P.E.



PLAT SHOWING  
**THE FAIRFAX  
A CONDOMINIUM**  
PREPARED FOR  
**WESTWIN OF ROANOKE, LLC**  
SITUATED AT THE INTERSECTION OF  
JEFFERSON ST, SE AND YELLOW MOUNTAIN ROAD, SE  
CITY OF ROANOKE, VIRGINIA

**LUMSDEN ASSOCIATES, P.C.**  
ENGINEERS-SURVEYORS-PLANNERS  
ROANOKE, VIRGINIA

4664 BRAMBLETON AVENUE, SW  
P.O. BOX 20669  
ROANOKE, VIRGINIA 24018

PHONE: (540) 774-4411  
FAX: (540) 772-9445  
E-MAIL: MAIL@LUMSDENPC.COM

DATE: September 14, 2007  
COMM. NO.: 2004-226  
SCALE: AS SHOWN

SHEET 2 OF 4