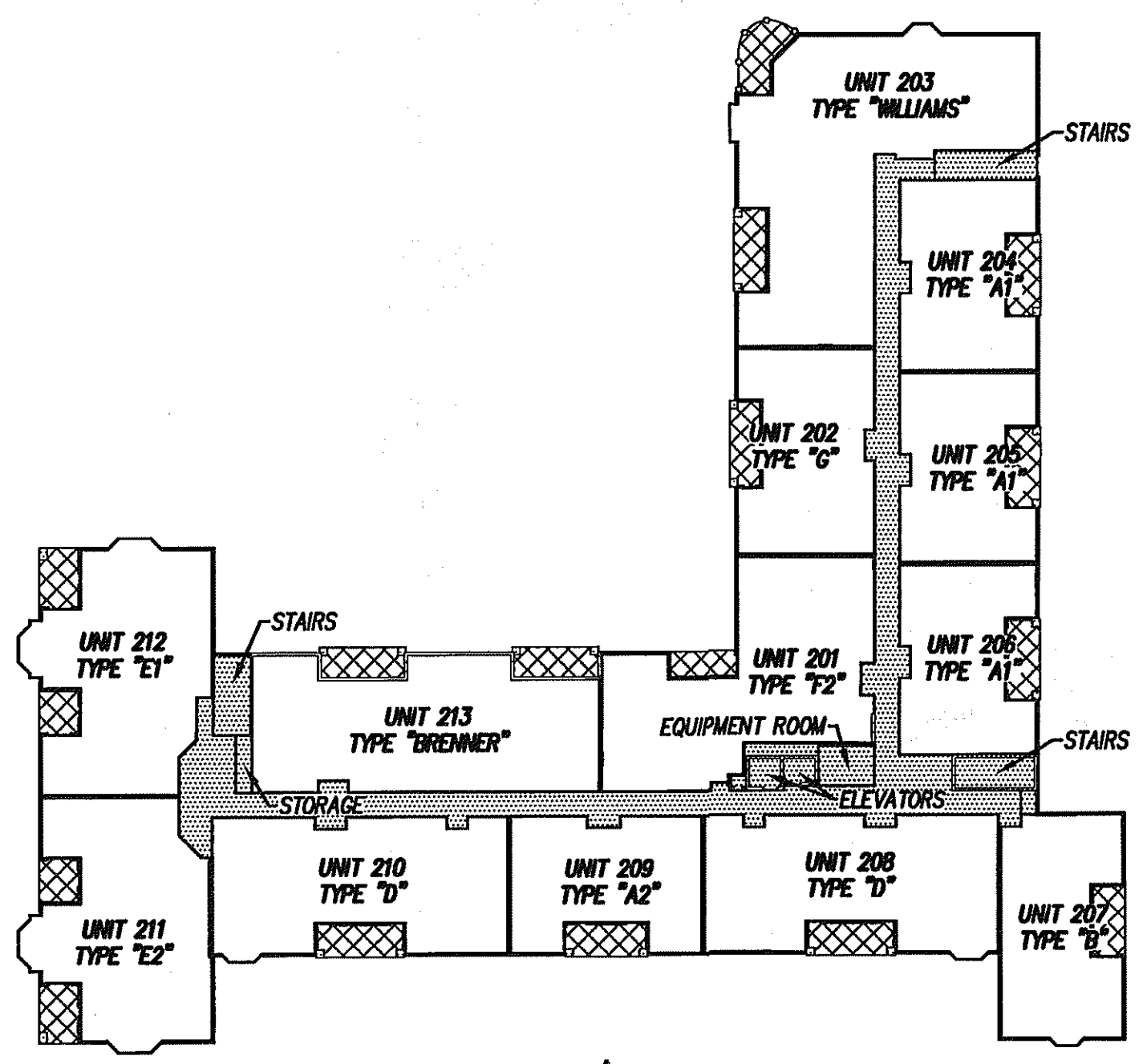
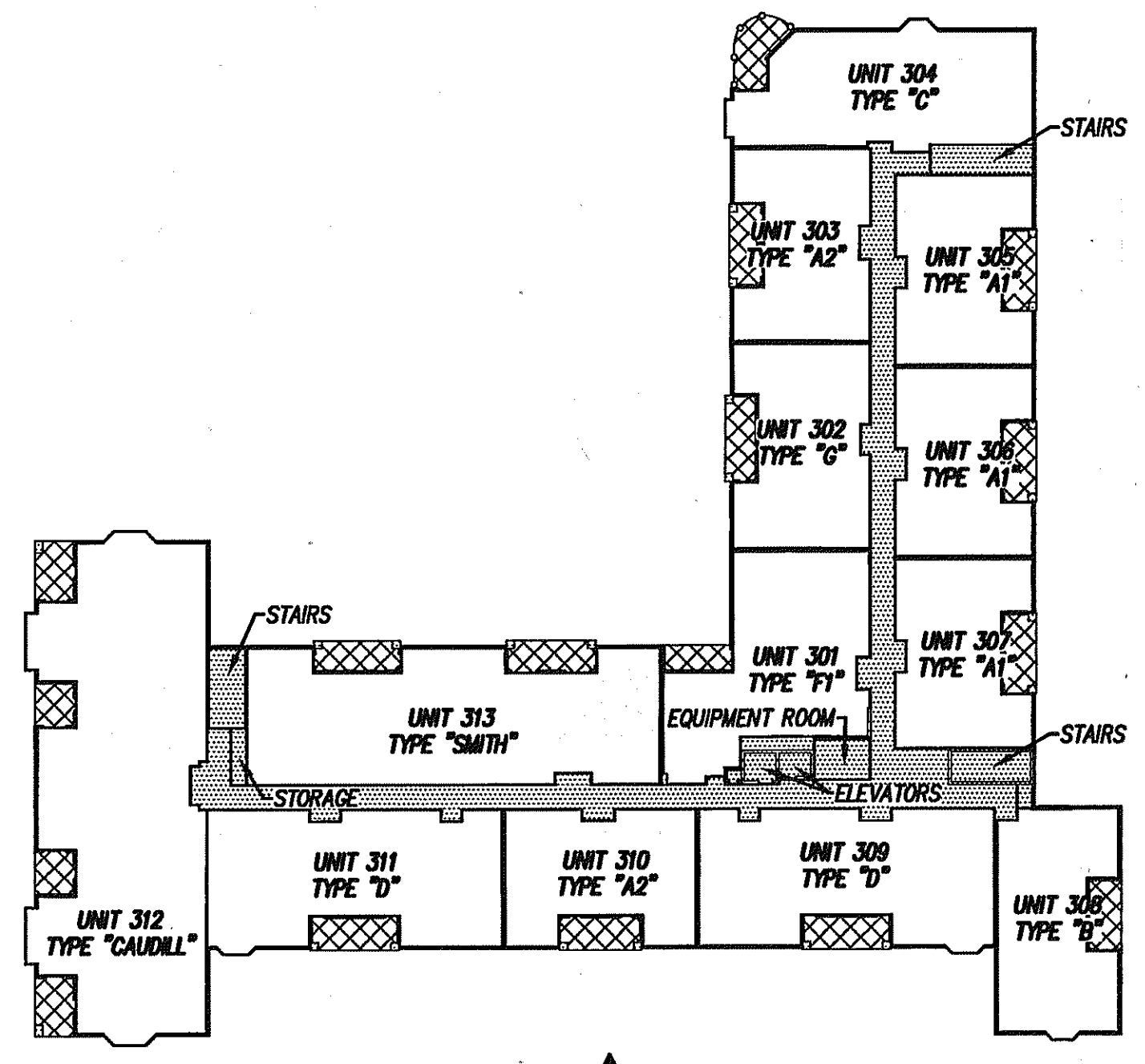


04226cn01-cn03.plt

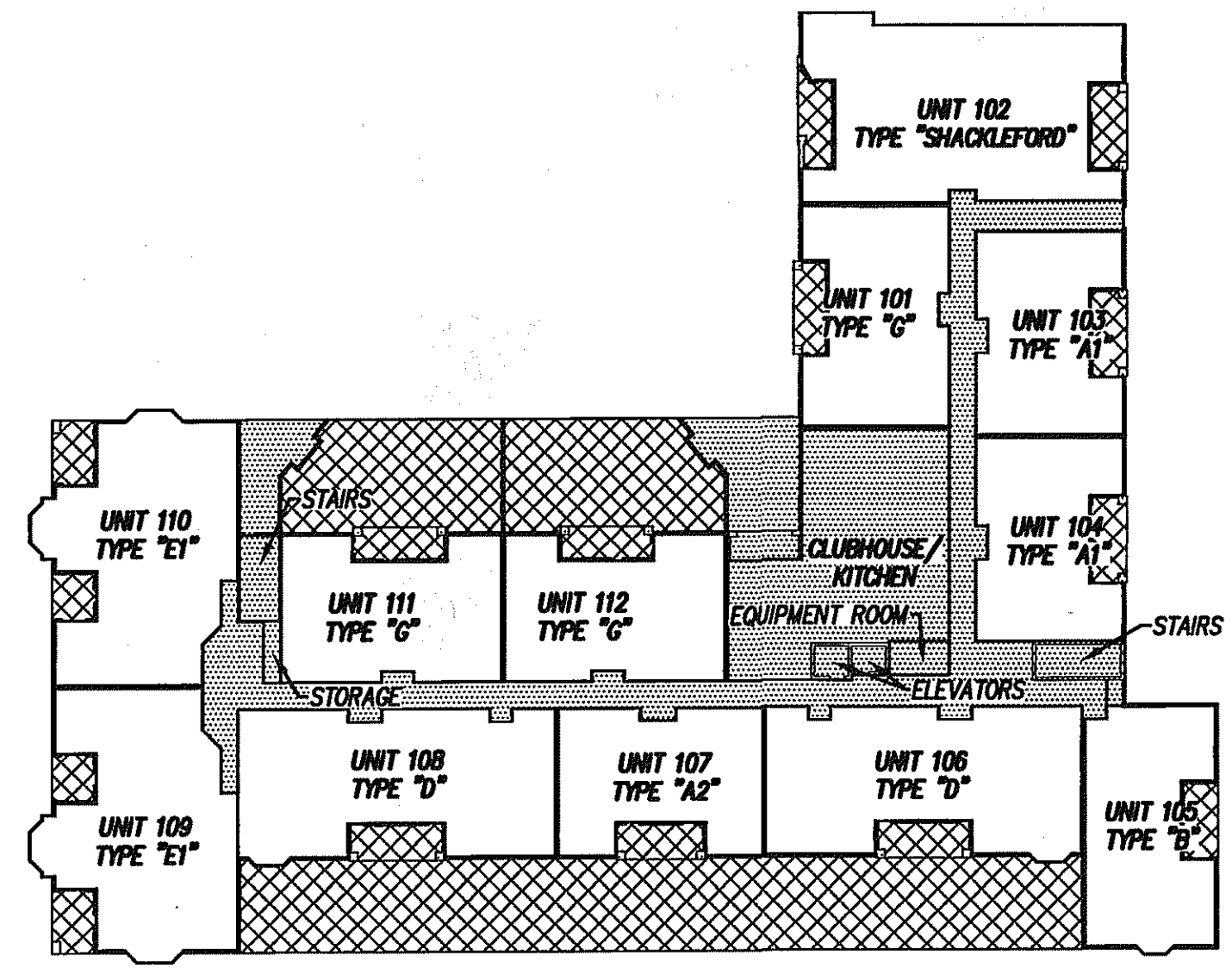
w:\drawings\2004\04226\sur\condo\residential-phase\04226cn01.dwg



FRONT
SECOND LEVEL RESIDENTIAL

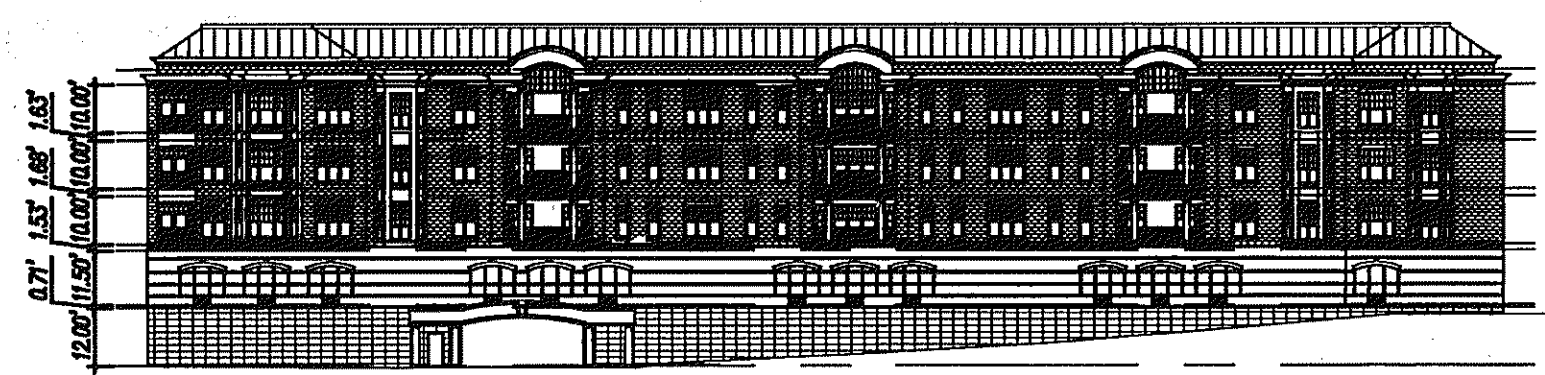


FRONT
THIRD LEVEL RESIDENTIAL



FRONT
FIRST LEVEL RESIDENTIAL

FLOOR ELEVATIONS		
LEVEL	REFERENCE POINT	ELEVATION
FIRST LEVEL PARKING	TOP OF SLAB	984.91
SECOND LEVEL PARKING	TOP OF SLAB	977.62
FIRST LEVEL RESIDENTIAL	SUBFLOOR	990.65
SECOND LEVEL RESIDENTIAL	SUBFLOOR	1002.33
THIRD LEVEL RESIDENTIAL	SUBFLOOR	1013.96



JEFFERSON STREET, SE
FRONT
FRONT ELEVATION

LEGEND

DENOTES LIMITED COMMON AREA

DENOTES GENERAL COMMON AREA

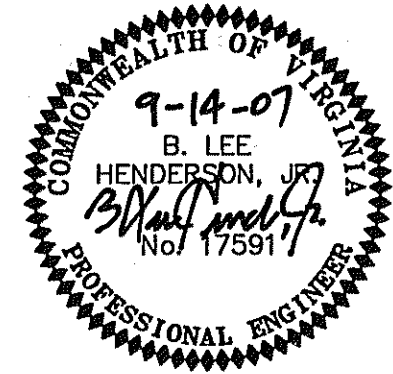
- NOTES:
- INCLUDED AS PART OF EACH UNIT IS THE DRY WALL COVERING ENCLOSING SUCH UNIT. ALL INTERIOR DIMENSIONS SHOWN ON THIS PLAT ARE MEASURED TO THE INSIDE FACE OF STUDS OR TO THE INSIDE FACE OF CONCRETE FOUNDATION WALLS.
 - ALL VERTICAL DIMENSIONS ARE MEASURED FROM SUB-FLOOR TO BOTTOM OF JOISTS.
 - UNIT DIMENSIONS SHOWN FOR UNIT TYPES A1, A2, B, D, E1, AND G ARE TYPICAL AND ARE BASED UPON THE MEDIAN OF FIELD MEASUREMENTS OF ALL UNITS OF THAT TYPE. UNIT DIMENSIONS SHOWN FOR ALL OTHER UNITS ARE THE ACTUAL FIELD MEASUREMENTS FOR THAT UNIT.
 - UNIT FLOOR AREAS SHOWN FOR UNIT TYPES A1, A2, B, D, E1, AND G ARE TYPICAL AND ARE BASED UPON THE MEDIAN OF ALL UNIT FLOOR AREAS OF THAT TYPE COMPUTED FROM FIELD MEASUREMENTS. THESE UNIT FLOOR AREAS ARE WITHIN 2% OF THE ACTUAL UNIT FLOOR AREA. UNIT FLOOR AREAS SHOWN FOR ALL OTHER UNITS ARE THE ACTUAL UNIT FLOOR AREAS COMPUTED FROM FIELD MEASUREMENTS.
 - SQUARE FOOTAGE SHOWN DOES NOT INCLUDE AREA FOR TERRACES, BALCONIES OR STORAGE ROOMS.

ENGINEER'S CERTIFICATE:

I, B. LEE HENDERSON, JR., REGISTERED ENGINEER IN THE COMMONWEALTH OF VIRGINIA, HEREBY CERTIFY THAT THIS PLAN, EXHIBIT "B", ACCURATELY SHOWS THE UNITS DELINEATED AND COMPLIES WITH THE PROVISIONS OF SECTION 55-79.58 PARAGRAPH (B) OF CONDOMINIUM ACT. I FURTHER CERTIFY THAT UNLESS NOTED OTHERWISE ALL UNITS DEPICTED HEREON HAVE BEEN SUBSTANTIALLY COMPLETED.

GIVEN UNDER MY HAND THIS 14TH DAY OF SEPTEMBER, 2007.

B. LEE HENDERSON, JR., P.E.

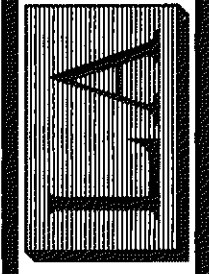


PLAT SHOWING
THE FAIRFAX
A CONDOMINIUM
PREPARED FOR
WESTWIN OF ROANOKE, LLC
SITUATED AT THE INTERSECTION OF
JEFFERSON ST, SE AND YELLOW MOUNTAIN ROAD, SE
CITY OF ROANOKE, VIRGINIA

PHONE: (540) 774-4411
FAX: (540) 772-9445
E-MAIL: MAIL@LUMSDENPC.COM

4664 BRAMBLETON AVENUE, SW
P.O. BOX 20669
ROANOKE, VIRGINIA 24018

LUMSDEN ASSOCIATES, P.C.
ENGINEERS-SURVEYORS-PLANNERS
ROANOKE, VIRGINIA



DATE:	September 14, 2007
COMM. NO.:	2004-226
SCALE:	1" = 40'