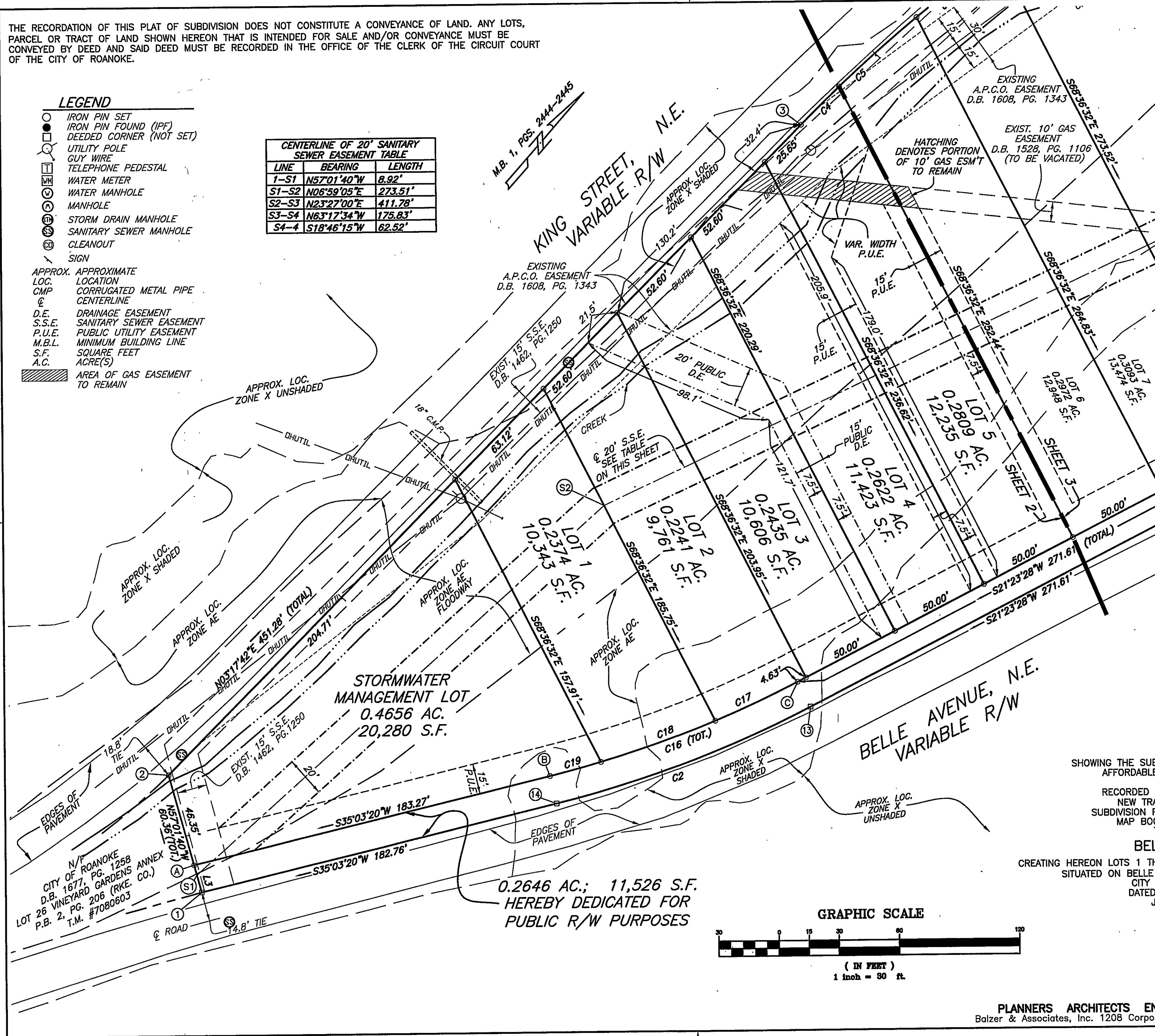


THE RECORDATION OF THIS PLAT OF SUBDIVISION DOES NOT CONSTITUTE A CONVEYANCE OF LAND. ANY LOTS, PARCEL OR TRACT OF LAND SHOWN HEREON THAT IS INTENDED FOR SALE AND/OR CONVEYANCE MUST BE CONVEYED BY DEED AND SAID DEED MUST BE RECORDED IN THE OFFICE OF THE CLERK OF THE CIRCUIT COURT OF THE CITY OF ROANOKE.

LEGEND

- IRON PIN SET
- ◻ IRON PIN FOUND (IPF)
- ◻ DEEDED CORNER (NOT SET)
- ⊙ UTILITY POLE
- ⊙ GUY WIRE
- ⊙ TELEPHONE PEDESTAL
- ⊙ WATER METER
- ⊙ WATER MANHOLE
- ⊙ MANHOLE
- ⊙ STORM DRAIN MANHOLE
- ⊙ SANITARY SEWER MANHOLE
- ⊙ CLEANOUT
- ⊙ SIGN
- APPROX. APPROXIMATE
- LOC. LOCATION
- CMP CORRUGATED METAL PIPE
- ⊙ CENTERLINE
- D.E. DRAINAGE EASEMENT
- S.S.E. SANITARY SEWER EASEMENT
- P.U.E. PUBLIC UTILITY EASEMENT
- M.B.L. MINIMUM BUILDING LINE
- S.F. SQUARE FEET
- A.C. ACRE(S)
- AREA OF GAS EASEMENT TO REMAIN

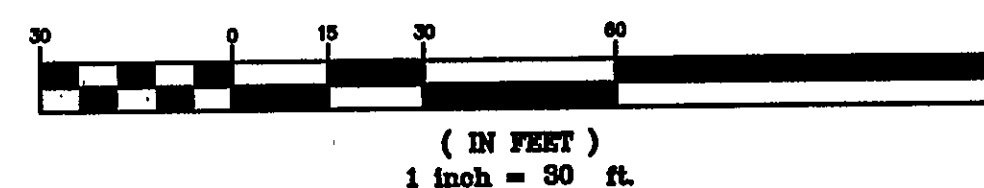
LINE	BEARING	LENGTH
1-S1	N57°01'40"W	8.92'
S1-S2	N06°59'05"E	273.51'
S2-S3	N23°27'00"E	411.78'
S3-S4	N63°17'34"W	175.83'
S4-4	S18°46'15"W	62.52'



PLAT OF SURVEY
SHOWING THE SUBDIVISION OF PROPERTY OWNED BY
AFFORDABLE HOME IMPROVEMENTS, INC.
& PETER BEARE
RECORDED IN INSTRUMENT #060019083
NEW TRACT A-3 (5.2910 ACRES)
SUBDIVISION PLAT FOR FW PROPERTIES, LLC
MAP BOOK 1, PAGES 2444-2445
TO BE KNOWN AS

BELLEVUE CREEK

CREATING HEREON LOTS 1 THRU 12 AND A STORMWATER MANAGEMENT LOT
SITUATED ON BELLE AVENUE, N.E. AND KING STREET, N.E.
CITY OF ROANOKE, VIRGINIA
DATED SEPTEMBER 25, 2007
JOB #R0600397.00
SCALE: 1" = 30'
SHEET 2 OF 4

GRAPHIC SCALE

PLANNERS ARCHITECTS ENGINEERS SURVEYORS
Balzer & Associates, Inc. 1208 Corporate Circle Roanoke Va 24018

BALZER
AND ASSOCIATES, INC.
REFLECTING TOMORROW

PLANNERS ARCHITECTS
ENGINEERS SURVEYORS