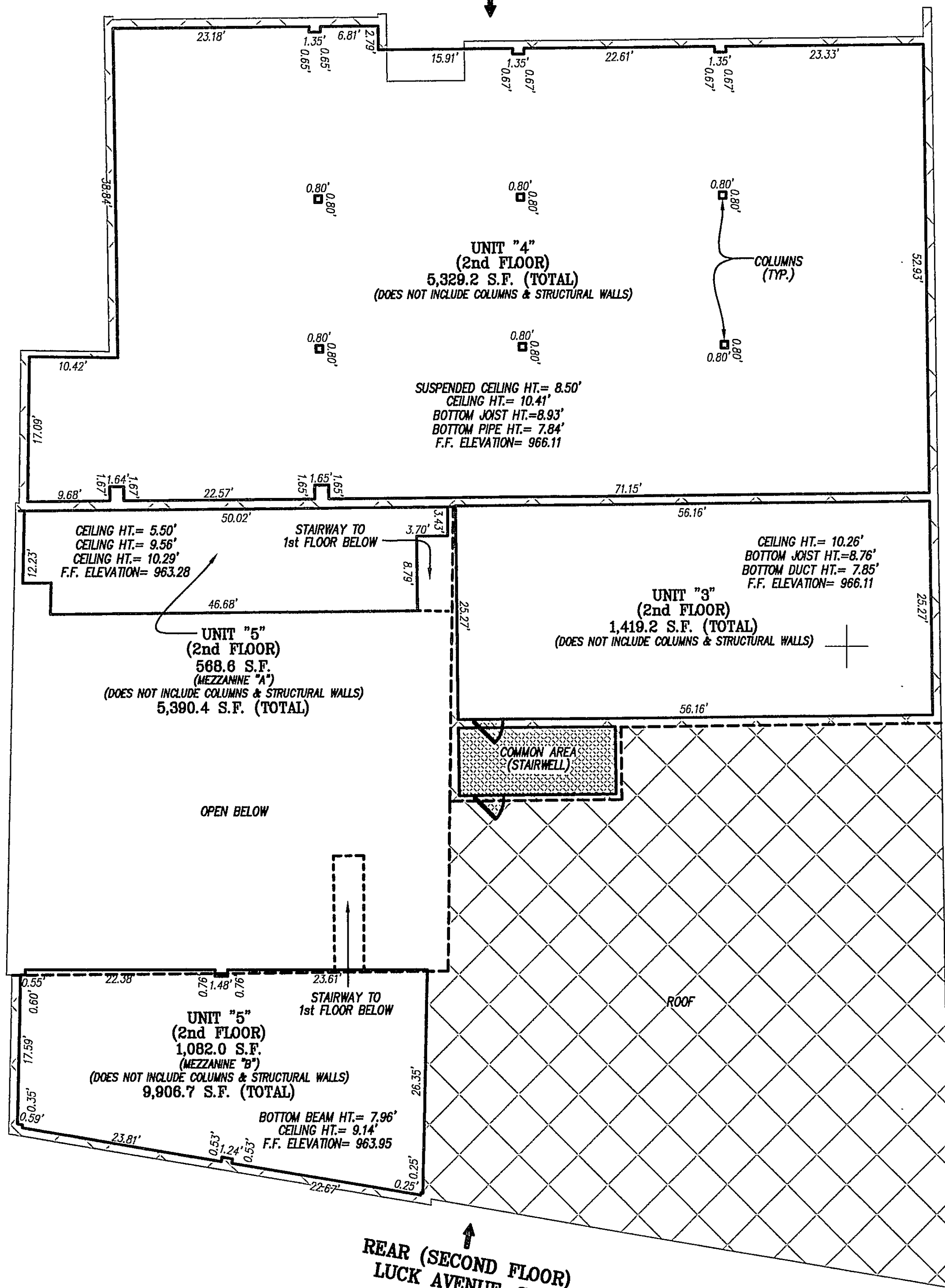


08008cn02-rev-sheet 3.plt

w:\drawings\2008\08008\sur\08008cn02-rev.dwg

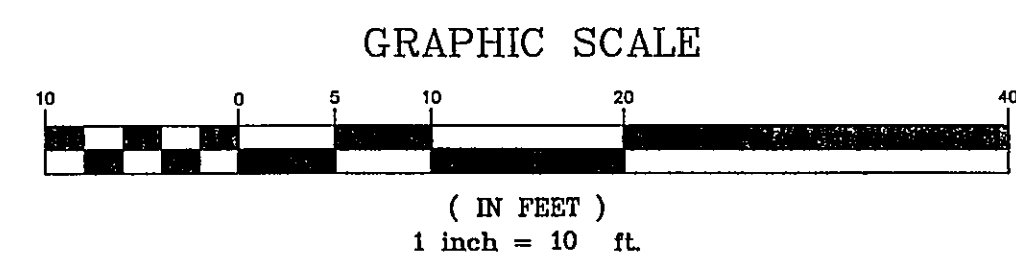
CHURCH AVENUE, S.W.
FRONT (SECOND FLOOR)



REAR (SECOND FLOOR)
LUCK AVENUE, S.W.

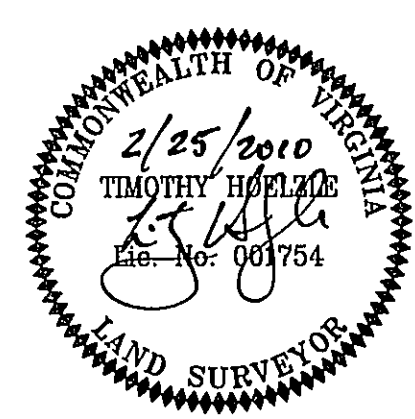
| LEGEND | |
|--------------|-----------------------------|
| | DENOTES GENERAL COMMON AREA |
| 4,426.1 S.F. | AREA OF UNIT (SQUARE FEET) |
| HT. | HEIGHT |
| F.F. | FINISHED FLOOR |
| | ORIENTATION FOR PLAN VIEW |

- NOTES:
1. INCLUDED AS PART OF EACH UNIT IS THE DRY WALL COVERING ENCLOSING SUCH UNIT. ALL INTERIOR DIMENSIONS SHOWN ON THIS PLAT ARE MEASURED TO THE INSIDE FACE OF STUDS OR TO THE INSIDE FACE OF CONCRETE FOUNDATION WALLS.
 2. ALL VERTICAL DIMENSIONS ARE MEASURED FROM FINISHED FLOOR.
 3. UNIT DIMENSIONS SHOWN ARE BASED UPON FIELD MEASUREMENTS.
 4. UNIT FLOOR AREAS ARE BASED ON FIELD DIMENSIONS.
 5. ALL EXTERIOR & PARTION WALLS ARE GENERAL COMMON AREA.



SURVEYOR'S CERTIFICATE:
I, TIMOTHY HOELZLE, REGISTERED LAND SURVEYOR IN THE COMMONWEALTH OF VIRGINIA, HEREBY CERTIFY THAT THIS PLAT, ACCURATELY SHOWS THE UNITS DELINEATED AND COMPLIES WITH THE PROVISIONS OF SECTION 55-79.58 PARAGRAPH (B) OF THE CONDOMINIUM ACT. I FURTHER CERTIFY THAT UNLESS NOTED OTHERWISE ALL UNITS DEPICTED HEREON HAVE BEEN SUBSTANTIALLY COMPLETED, GIVEN UNDER MY HAND THIS 25 DAY OF FEBRUARY, 2010.

TIMOTHY HOELZLE, L.S.

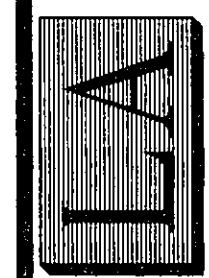


2nd FLOOR PLAN VIEW
PLAT SHOWING
420 WEST CHURCH AVENUE CONDOMINIUM
A CONDOMINIUM
PROPERTY OF
NAJI KARIM
SITUATED AT 420 CHURCH AVENUE, S.W.
ROANOKE, VIRGINIA

PHONE: (540) 774-4411
FAX: (540) 772-9445
E-MAIL: MAIL@LUMSDENPC.COM

4664 BRAMBLETON AVENUE, SW
P.O. BOX 20669
ROANOKE, VIRGINIA 24018

LUMSDEN ASSOCIATES, P.C.
ENGINEERS-SURVEYORS-PLANNERS
ROANOKE, VIRGINIA



| | |
|--------------|-------------------|
| DATE: | February 25, 2010 |
| COMM. NO.: | 08-008 |
| SCALE: | 1" = 10' |
| SHEET 3 OF 6 | |