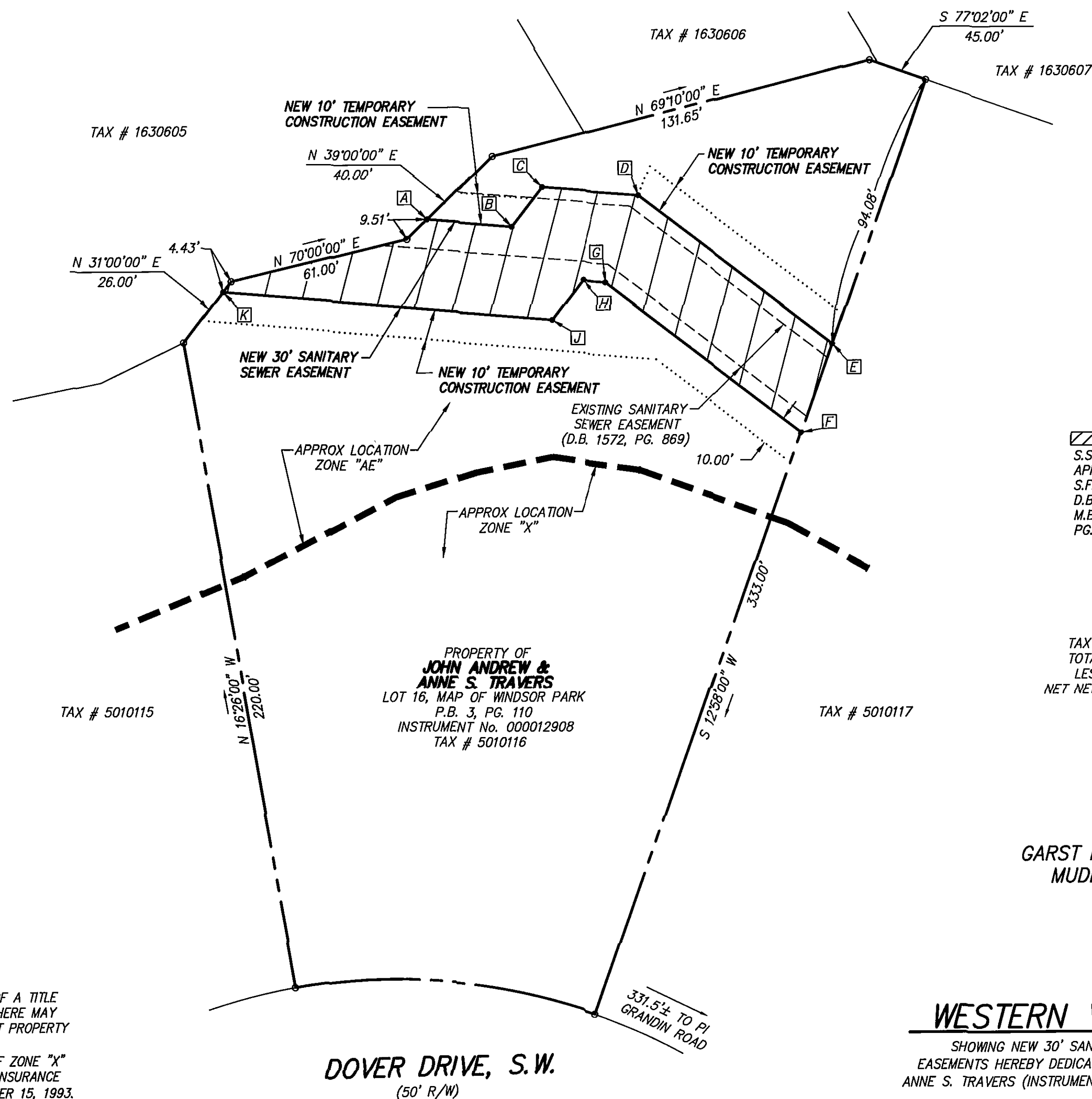


MERIDIAN OF MAP OF WINDSOR PARK  
(P.B. 3, PG. 110)



## LEGEND

[Hatched Box] = NEW SANITARY SEWER EASEMENT  
 S.S.E. = SANITARY SEWER EASEMENT  
 APPROX = APPROXIMATE  
 S.F. = SQUARE FEET  
 D.B. = DEED BOOK  
 M.B. = MAP BOOK  
 PG. = PAGE

TAX # 5010116  
 TOTAL NEW 30' S.S.E. 5,633 S.F.  
 LESS EXISTING S.S.E. ~ 2,705 S.F.  
 NET NEW SANITARY S.S.E. 2,928 S.F.

GARST MILL CORRECTIVE ACTION PROJECT  
MUDLICK CREEK INTERCEPTOR 2006

EASEMENT PLAT  
FOR

## WESTERN VIRGINIA WATER AUTHORITY

SHOWING NEW 30' SANITARY SEWER EASEMENT AND 10' TEMPORARY CONSTRUCTION EASEMENTS HEREBY DEDICATED TO WESTERN VIRGINIA WATER AUTHORITY BY JOHN ANDREW & ANNE S. TRAVERS (INSTRUMENT No. 000012908) LOT 16, MAP OF WINDSOR PARK P.B. 3, PG. 110.

SITUATE DOVER DRIVE, S.W.  
CITY OF ROANOKE, VIRGINIA



**CALDWELL WHITE ASSOCIATES**

ENGINEERS / SURVEYORS / PLANNERS  
4203 MELROSE AVENUE, NW  
P.O. BOX 6260  
ROANOKE, VIRGINIA 24017  
(540) 366-3400 FAX: (540) 366-8702

TAX NO. 5010116  
 DATE: JUNE 15, 2006  
 CALC. JW CHK'D FBC  
 CLOSED: JW

SCALE: 1" = 30'  
 N.B.: MUDLICK 1  
 DRAWN: JW  
 W.O.: 05-0102-12

### LINE TABLE

LINE	BEARING	DISTANCE
A-B	N 88°13'06" E	28.54'
B-C	N 31°08'36" E	16.90'
C-D	N 88°00'03" E	32.91'
D-E	S 59°06'24" E	82.10'
E-F	S 12°58'00" W	31.53'
F-G	N 59°06'24" W	82.95'
G-H	S 88°00'03" W	7.82'
H-J	S 31°08'36" W	16.97'
J-K	S 88°13'06" W	111.40'

## NOTES:

1. THIS PLAT WAS PREPARED WITHOUT THE BENEFIT OF A TITLE REPORT BY A LICENSED ATTORNEY, THEREFORE, THERE MAY EXIST ENCUMBRANCES WHICH AFFECT THE SUBJECT PROPERTY THAT MAY NOT BE SHOWN HEREON.
2. THE SUBJECT PROPERTY LIES WITHIN THE LIMITS OF ZONE "X" AND ZONE "AE" AS SHOWN ON THE FEMA FLOOD INSURANCE RATE MAP, 51161C0044 D, EFFECTIVE DATE OCTOBER 15, 1993.
3. THIS PLAT DOES NOT CONSTITUTE A BOUNDARY SURVEY BY CALDWELL WHITE ASSOCIATES.

IN THE CLERK'S OFFICE OF THE CIRCUIT COURT OF ROANOKE CITY, VIRGINIA, THIS MAP WAS PRESENTED WITH THE CERTIFICATE OF ACKNOWLEDGEMENT THERE TO ATTACHED ADMITTED TO RECORD AT 4:22 O'CLOCK P.M. ON THIS 13th DAY OF September, 2006.

TESTE: BRENDA HAMILTON

CLERK

BY: *Anna Brice*  
DEPUTY CLERK

