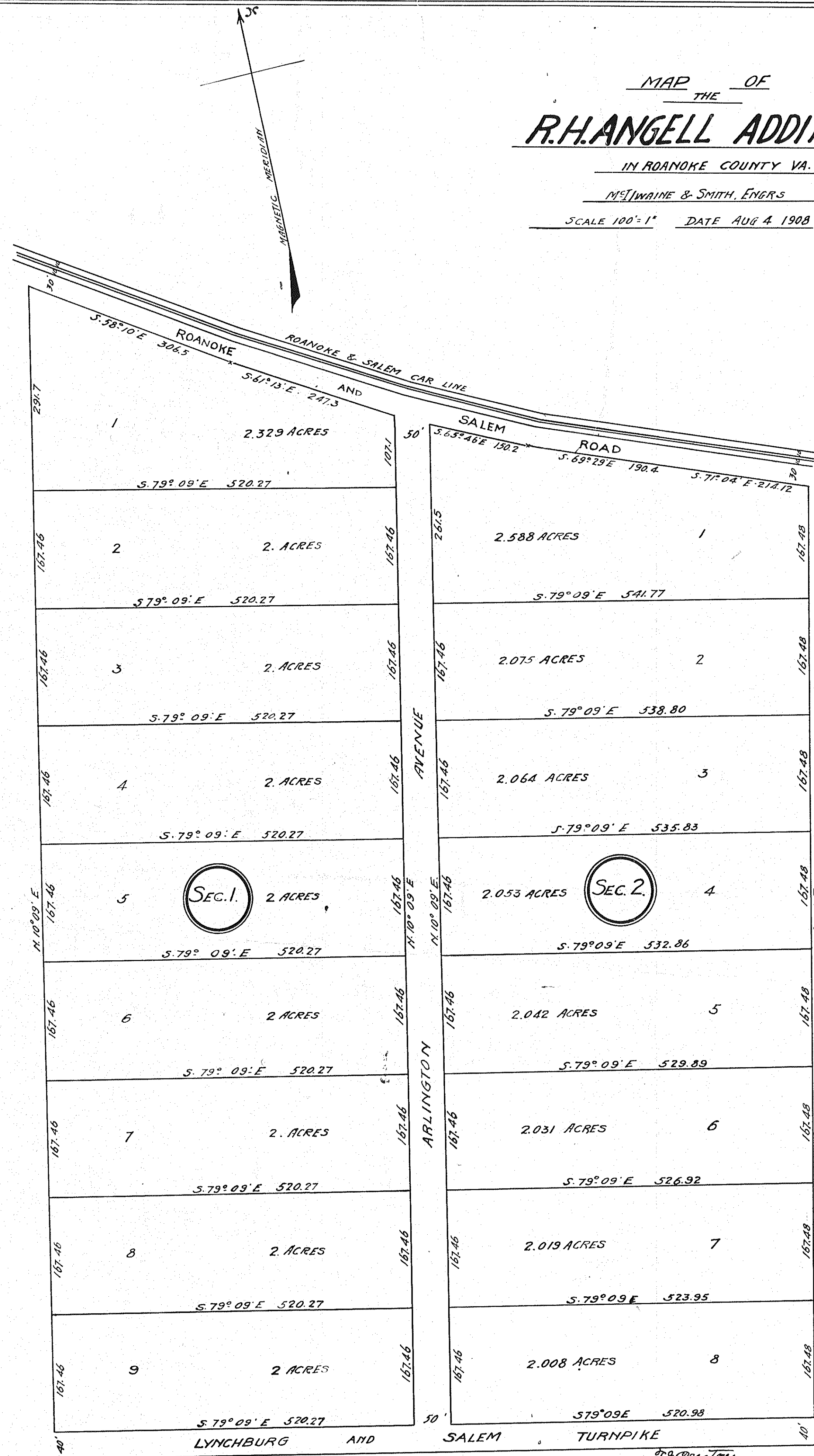


MAP OF THE R.H. ANGELL ADDITION

IN ROANOKE COUNTY VA.

M^{rs} J. WAINES & SMITH, ENGINEERS

SCALE 100' = 1" DATE AUG 4 1908



This tracing made February 21st 1928.
 from Blue Print on file in the office of the
 Clerk of the Circuit Court of Roanoke County,
 at Salem, Virginia.
 Made by *Wm. C. Payne*
 Checked by *J. T. McElhenny*

In the Clerk's office, Circuit Court of Roanoke
 County, this 23rd day of August, 1910, this map
 was presented, was admitted to record at 8 o'clock A.M.
 Test: *Geo. D. Pruitt* Clerk