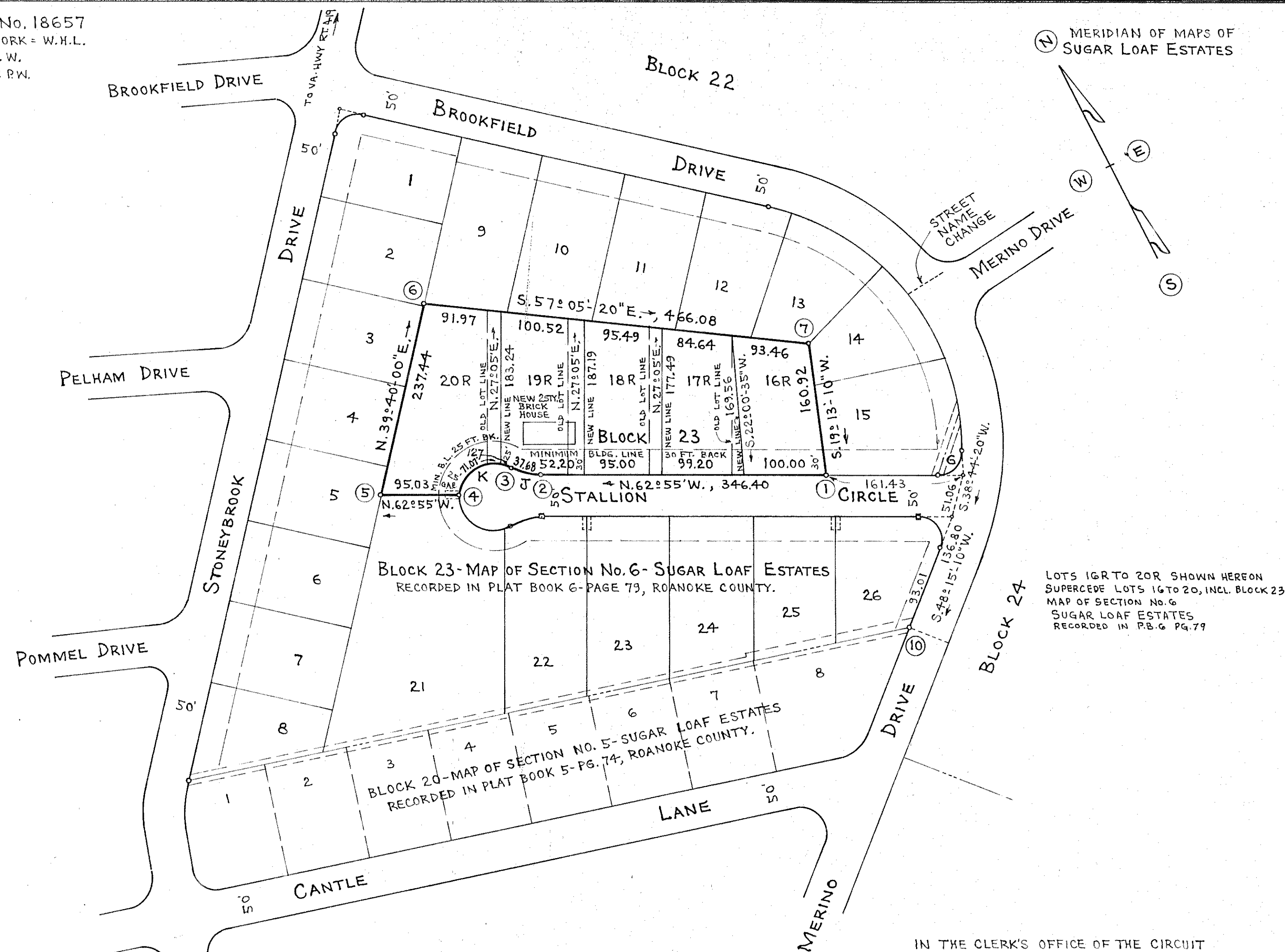
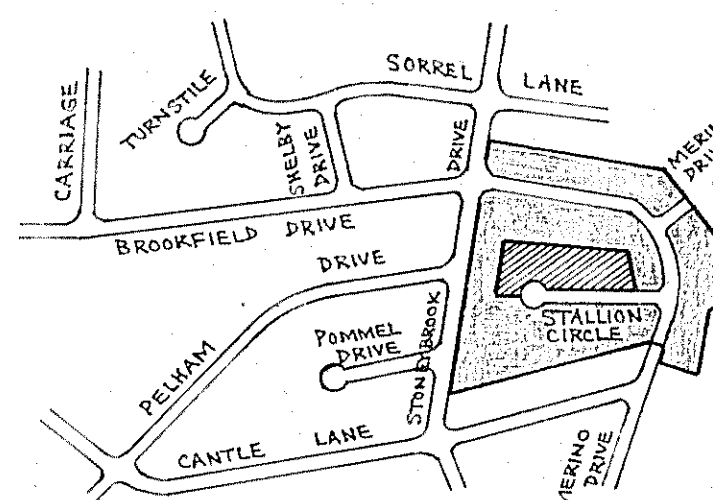
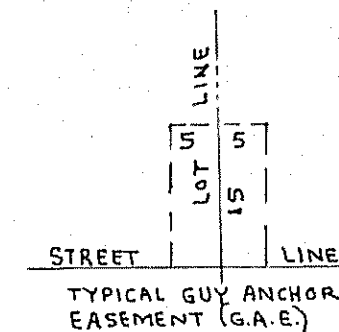


COMM. No. 18657
FIELD WORK - W.H.L.
CALC. - P.W.
CK'D. BY: P.W.



		CURVE DATA		CHORD		DIST.	
		ANGLE	TAN.	ARC	BEARING		
CURVE G	LOT 15	89°10'50"	23.57	30.00	S. 72°29'35" W.	42.12	
CURVE J	LOT 19 R	29°53'50"	19.28	37.68	N. 47°55'05" W.	37.25	
CURVE K	TOTAL	233°53'40"		40.00	S. 27°05'00" W.	69.28	
CURVE K	LOT 19 R	18°11'40"	6.41	40.00	N. 42°00'43" W.	12.65	
CURVE K	LOT 20 R	101°48'08"	43.22	40.00	S. 77°59'05" W.	62.08	



NOTE:
IRON PINS MARK ALL CORNERS
OF LOTS 16R - 20R

IN THE CLERK'S OFFICE OF THE CIRCUIT COURT FOR THE COUNTY OF ROANOKE, VIRGINIA, THIS MAP IS PRESENTED ON THIS 27 DAY OF SEPTEMBER, 1967, AND WITH THE CERTIFICATES OF DEDICATION AND ACKNOWLEDGMENT THERETO ANNEXED, IS ADMITTED TO RECORD AT 8:45 O'CLOCK A. M.

TESTE: N.C. LOGAN, CLERK.

BY: Mary P. Hallandsworth
DEPUTY CLERK

CAPTION LEGAL REFERENCE:
BEING A PORTION OF THE LAND CONVEYED TO OAK GROVE DEVELOPMENT CORPORATION BY J.T. ENGBLY, JR., WIDOWER, OF RECORD IN DEED BOOK 645 - PAGE 577.

AUGUST 21, 1967.
I, HEREBY, CERTIFY THAT THIS
PLAT OF SURVEY IS CORRECT.

C.B. Malcolm & Son
STATE CERTIFIED SURVEYOR

KNOW ALL MEN BY THESE PRESENTS:

THAT OAK GROVE DEVELOPMENT CORPORATION IS THE FEE SIMPLE OWNER AND PROPRIETOR OF THE LAND SHOWN HEREON TO BE RE-SUBDIVIDED, KNOWN AS MAP OF REDIVISION OF LOTS 16 TO 20, INCLUSIVE, BLOCK 23 - MAP OF SECTION NO. 6 - SUGAR LOAF ESTATES, BOUNDED AS SHOWN HEREON IN DETAIL BY CORNERS ① TO ⑦, INCLUSIVE, SUBJECT ONLY TO THE LIEN OF A CERTAIN DEED OF TRUST DATED JUNE 1, 1960, FROM OAK GROVE DEVELOPMENT TO J. THOMAS ENGBLY, III, AND BEN M. RICHARDSON, TRUSTEES, SECURING J.T. ENGBLY, JR., WIDOWER, BENEFICIARY, OF RECORD IN THE CLERK'S OFFICE OF THE CIRCUIT COURT OF ROANOKE COUNTY IN DEED BOOK 645 - PAGE 579.

THE UNDERSIGNED OWNER AND PROPRIETOR, TRUSTEES, AND BENEFICIARY CERTIFY THAT THE SAID RE-SUBDIVISION AS APPEARS ON THIS PLAT IS WITH THE CONSENT AND IN ACCORDANCE WITH THE DESIRE OF THE UNDERSIGNED PARTIES.

THE SAID OWNER AND PROPRIETOR, WITH THE CONSENT OF THE UNDERSIGNED TRUSTEES AND BENEFICIARY HEREBY DEDICATES TO AND VESTS IN THE COUNTY OF ROANOKE, WHEREIN SAID LAND LIES SUCH PORTIONS OF THE PREMISES PLATTED AS ARE ON THIS PLAT SET APART FOR STREETS, EASEMENTS OR OTHER PUBLIC USE OR FOR FUTURE STREET WIDENING IN ACCORDANCE WITH THE PROVISIONS OF THE SUBDIVISION ORDINANCE OF ROANOKE COUNTY, AS AMENDED, AND THE VIRGINIA LAND SUBDIVISION ACT.

THE UNDERSIGNED OWNER DOTH, BY VIRTUE OF RECORDATION OF THIS PLAT, DEDICATE CERTAIN DRAINAGE EASEMENTS OF VARYING WIDTHS, AS SHOWN ON THE ANNEXED PLAT, FOR DRAINAGE PURPOSES, AND THE OWNER DOTH FURTHER, AS A CONDITION PRECEDENT TO THE APPROVAL OF THE FINAL PLAT AND SUBDIVISION AND THE ACCEPTANCE OF THE DEDICATION OF THE STREETS SHOWN THEREON BY THE BOARD OF SUPERVISORS OF ROANOKE COUNTY, ON HIS OWN BEHALF AND FOR AND ON ACCOUNT OF HIS HEIRS, SUCCESSORS, DEVISEES, AND ASSIGNS, SPECIFICALLY RELEASE THE COUNTY OF ROANOKE, VA., AND THE VIRGINIA DEPARTMENT OF HIGHWAYS FROM ANY AND ALL CLAIM OR CLAIMS FOR DAMAGES WHICH SUCH OWNER, HIS HEIRS, SUCCESSORS, DEVISEES, AND ASSIGNS MAY HAVE AGAINST THE COUNTY OF ROANOKE, VA., AND THE VIRGINIA DEPARTMENT OF HIGHWAYS BY REASON OF ESTABLISHING PROPER GRADE LINES ON AND ALONG SUCH STREETS AS SHOWN ON THE PLAT OF THE LAND RESUBDIVIDED ON SUCH CHANGED STREETS AS MAY BE AGREED UPON IN THE FUTURE AND BY REASON OF DOING NECESSARY GRADING, CUTTING OR FILLING FOR THE PURPOSE OF PLACING SUCH STREETS UPON THE PROPER GRADE AS MAY, FROM TIME TO TIME, BE ESTABLISHED BY SAID COUNTY OR VIRGINIA DEPARTMENT OF HIGHWAYS, AND SAID COUNTY OR VIRGINIA DEPARTMENT OF HIGHWAYS SHALL NOT BE REQUIRED TO CONSTRUCT ANY RETAINING WALL OR WALLS ALONG THE STREETS AND PROPERTY LINES THEREOF.

WITNESS THE SIGNATURE OF SAID CORPORATION BY HENRY SCHOLZ, JR., ITS PRESIDENT WITH ITS CORPORATE SEAL HEREUNTO AFFIXED AND DULY ATTESTED BY GORDON C. WILLIS, ITS SECRETARY, AND THE SIGNATURES AND SEALS OF THE AFORESAID TRUSTEES AND BENEFICIARY THIS 31 DAY OF AUGUST, 1967.

OAK GROVE DEVELOPMENT CORPORATION

ATTEST:

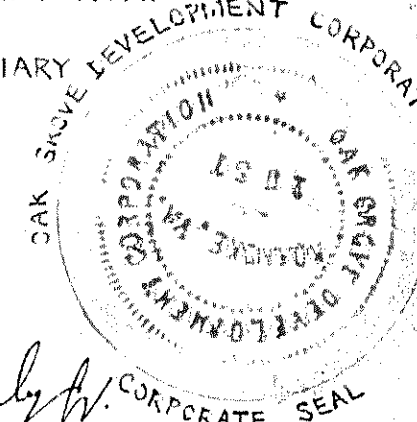
BY: Gordon C. Willis
GORDON C. WILLIS, SECRETARY

Henry Scholz, Jr.
HENRY SCHOLZ, JR., PRESIDENT

J. Thomas Engbly, III
J. THOMAS ENGBLY, III, TRUSTEE

Ben M. Richardson
BEN M. RICHARDSON, TRUSTEE

J.T. Engbly, Jr.
J.T. ENGBLY, JR., WIDOWER, BENEFICIARY



STATE OF VIRGINIA
CITY OF ROANOKE } TO WIT:

I, MARY LINDA M. SMILEY, A NOTARY PUBLIC IN AND FOR THE CITY AND STATE AFORESAID DO HEREBY, CERTIFY THAT HENRY SCHOLZ, JR., AND GORDON C. WILLIS, PRESIDENT AND SECRETARY, RESPECTIVELY, OF OAK GROVE DEVELOPMENT CORPORATION AND J. THOMAS ENGBLY, III, AND BEN M. RICHARDSON, TRUSTEES, AND J.T. ENGBLY, JR., BENEFICIARY, WHOSE NAMES ARE SIGNED TO THE FOREGOING WRITING DATED AUGUST 21, 1967, HAVE EACH PERSONALLY APPEARED BEFORE ME IN MY CITY AND STATE AFORESAID AND ACKNOWLEDGED THE SAME.

GIVEN UNDER MY HAND THIS 31 DAY OF AUGUST, 1967.

MY COMMISSION EXPIRES DECEMBER 13, 1968.

Mary Linda M. Smiley
NOTARY PUBLIC

APPROVED:

Charles H. Lopic
CHAIRMAN, BOARD OF SUPERVISORS,
ROANOKE COUNTY

9-19-67
DATE

Paul B. Williams
SECRETARY, ROANOKE COUNTY PLANNING
COMMISSION

9/18/67
DATE

William F. Clark
CITY ENGINEER OF ROANOKE, VIRGINIA.

9-25-67
DATE

Dexter N. Smith
AGENT FOR ROANOKE CITY PLANNING COMM.

9/25/67
DATE

MAP OF REDIVISION OF LOTS 16 TO 20, INCLUSIVE,
BLOCK 23-MAP OF SECTION NO. 6
SUGAR LOAF ESTATES
PROPERTY OF OAK GROVE DEVELOPMENT CORPORATION
SITUATE IN CAVE SPRING DISTRICT SOUTH OF VIRGINIA HIGHWAY ROUTE NO. 419
ROANOKE COUNTY, VIRGINIA.

BY: C. B. MALCOLM & SON
STATE CERT. ENGRS.
ROANOKE, VIRGINIA.

DATE: AUGUST 21, 1967.

SCALE: 1"=100'