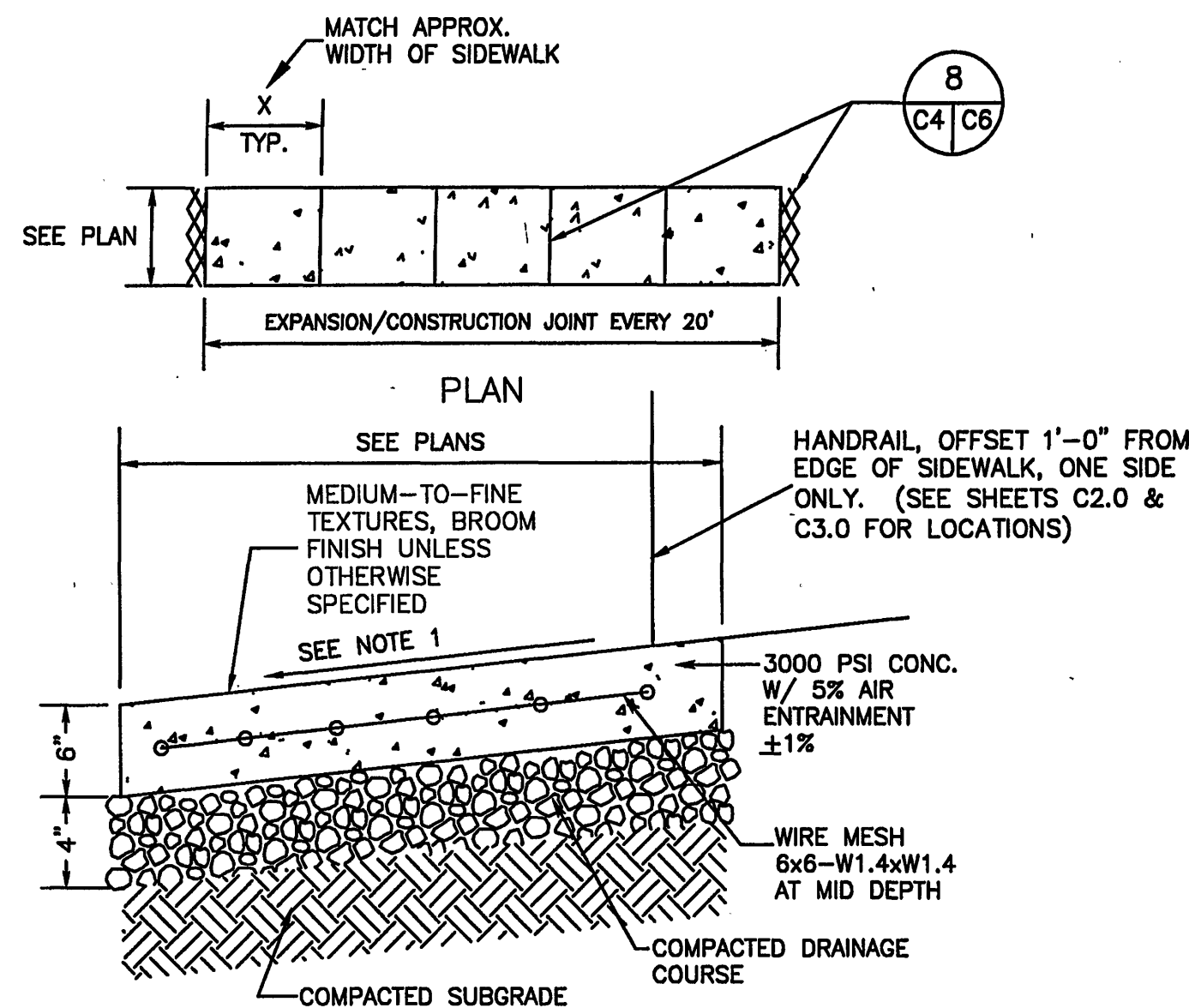


NOTE: DOWELS 3/4" X 18" LONG SPACED 18" ON CENTERS.

SMOOTH DOWELS AT MID-DEPTH (SAWED, NOT SHEARED) LUBRICATE DOWELS TO PREVENT BONDING.

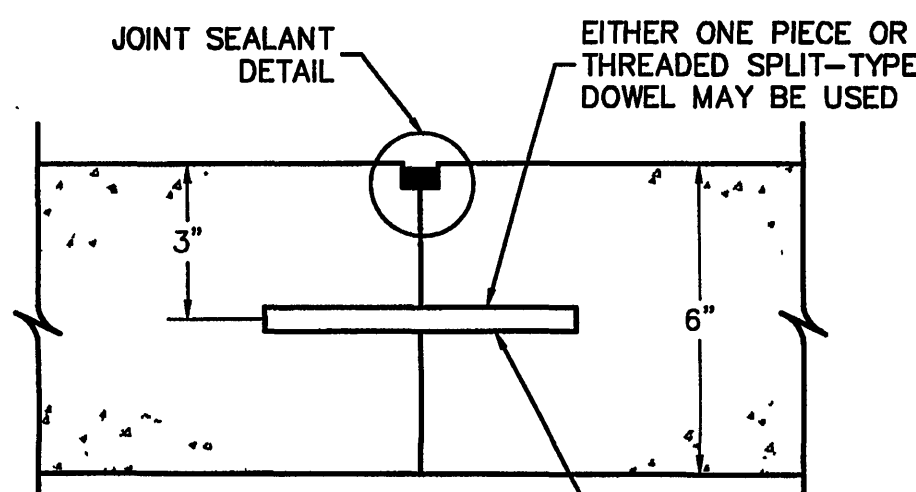
NOTE: CONSTRUCTION JOINTS SHALL BE INSTALLED SIMILAR TO THIS DETAIL WITH THE FOLLOWING EXCEPTIONS: NO EXPANSION FILLER REQUIRED AND DETAIL 3 DOES NOT APPLY.

8 EXPANSION JOINT DETAIL  
C4/C6 NO SCALE



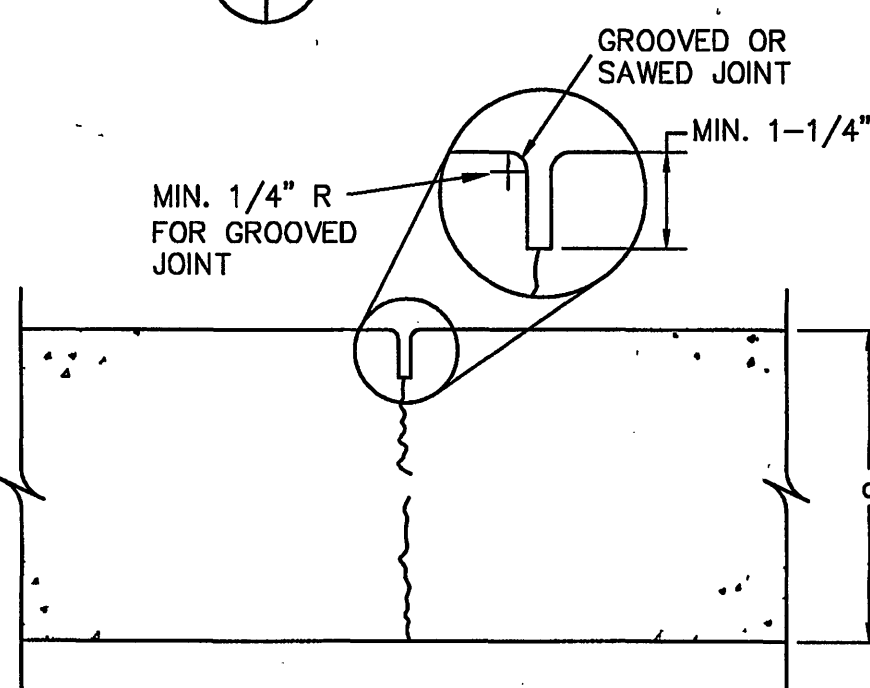
NOTE:  
1. INSTALL IN ACCORDANCE WITH SPOT ELEVATIONS WHEN SHOWN ON PLANS. OTHERWISE INSTALL WITH CROSS SLOPE OF 1/4":1'.

8 TYPICAL PEDESTRIAN SIDEWALK SECTION  
C4/C6 NO SCALE



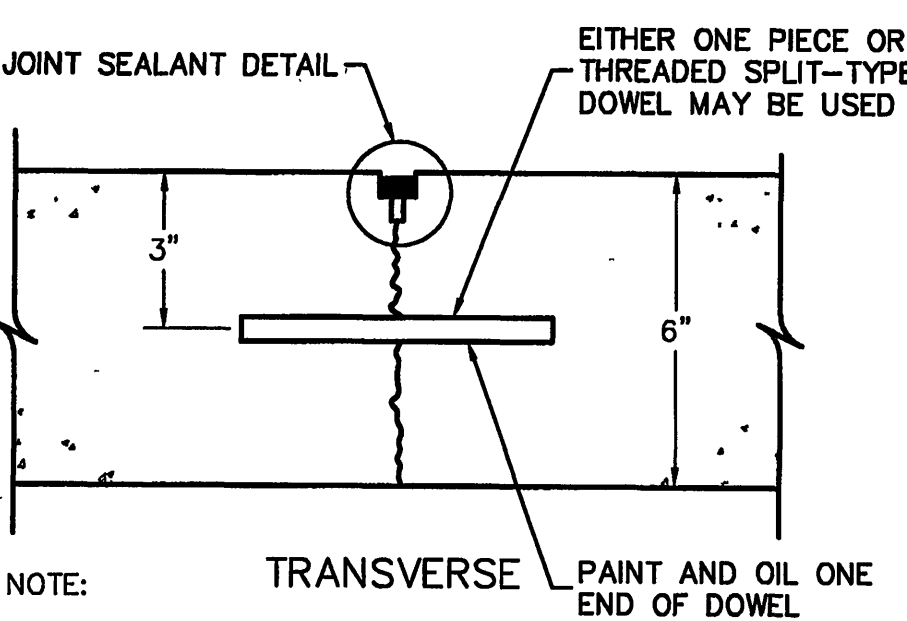
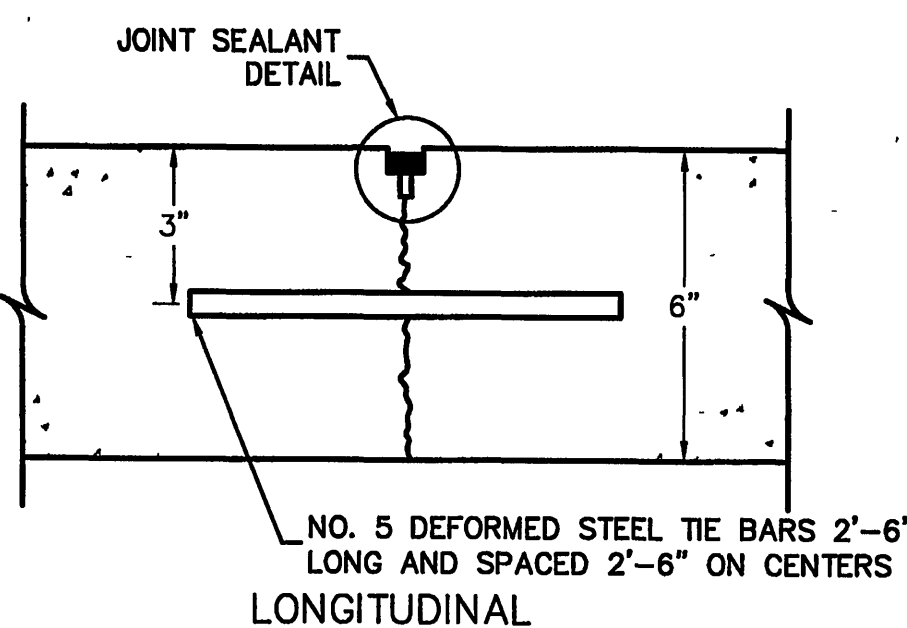
NOTE:  
DOWELS 3/4" X 15" LONG SPACED 12" ON CENTERS.

PAIN AND OIL ONE END



8 CONTROL JOINT DETAIL  
C4/C6 NO SCALE

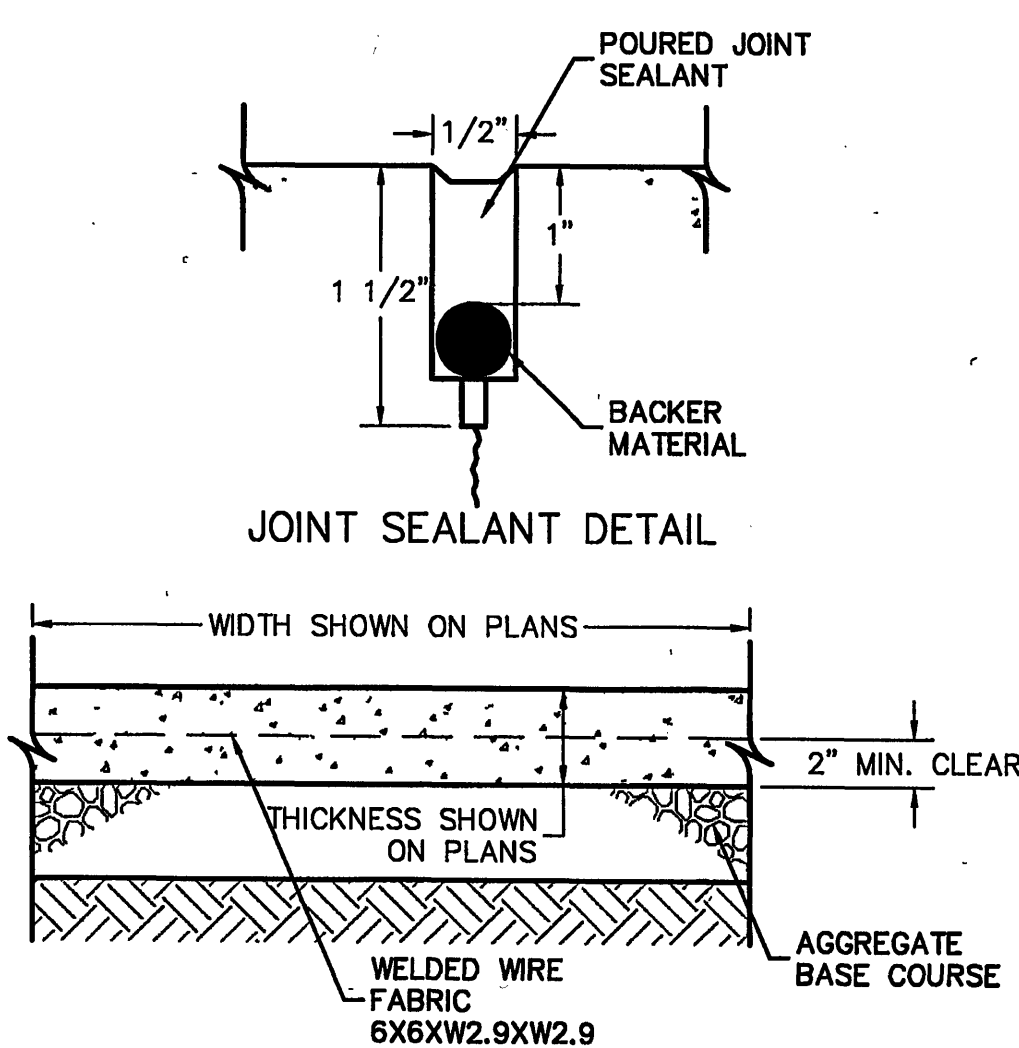
9 RIGID PAVEMENT DETAILS  
C4/C6



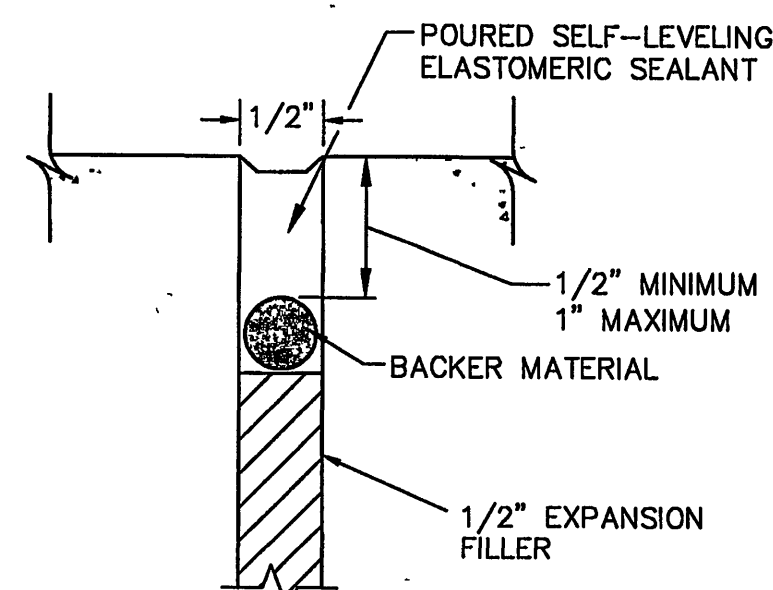
NOTE:  
DOWELS 3/4" X 15" LONG SPACED 18" ON CENTERS.

PAIN AND OIL ONE END OF DOWEL

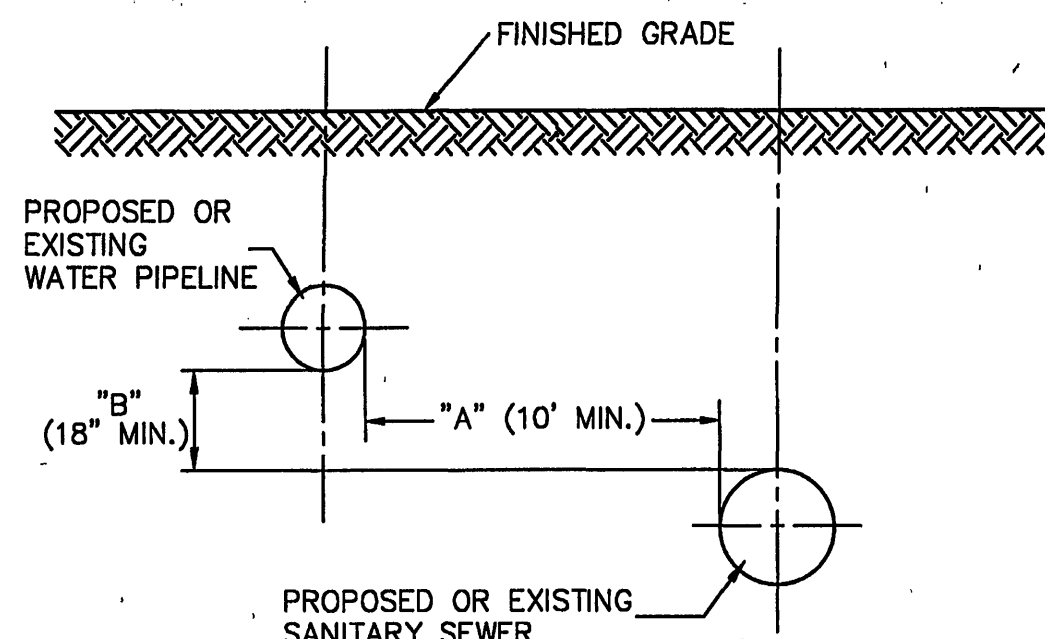
9 RIGID PAVEMENT DETAILS  
C4/C6



9 RIGID PAVEMENT DETAILS  
C4/C6

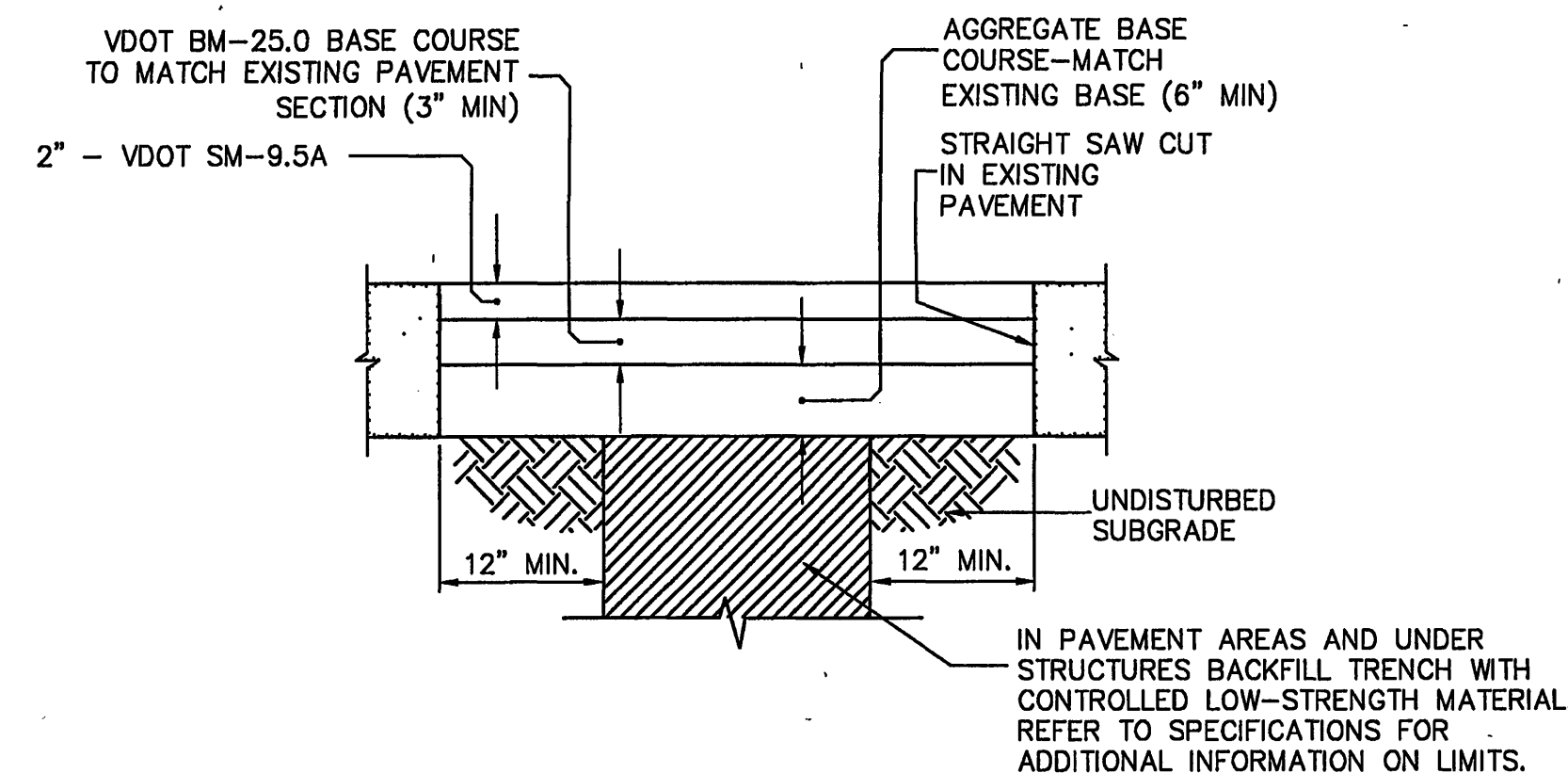


9 EXPANSION/ISOLATION JOINT SEALANT DETAIL  
C4/C6 NO SCALE

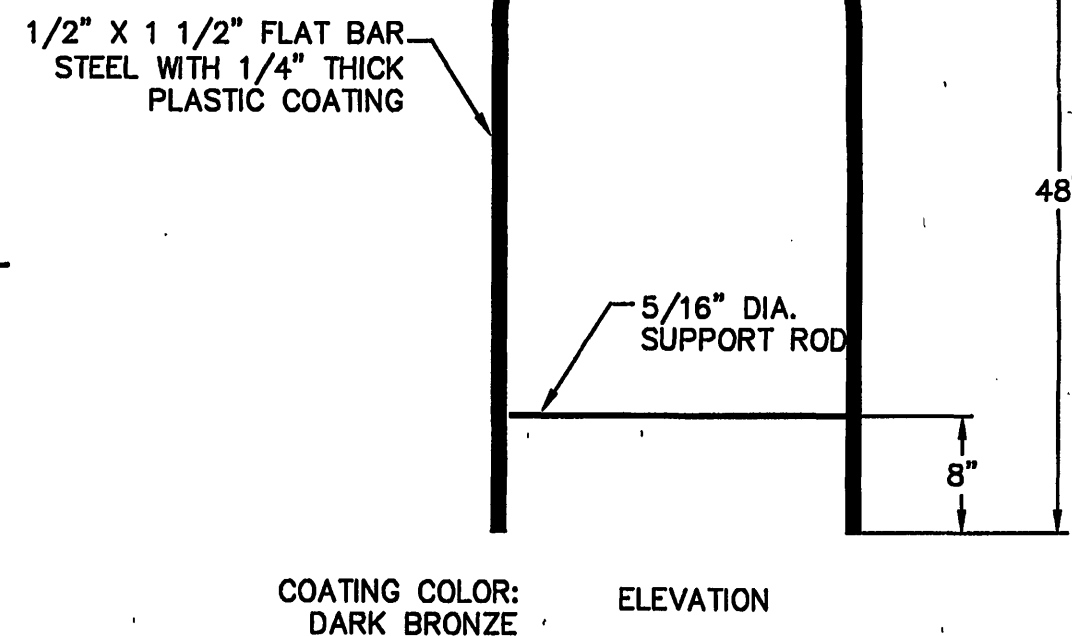
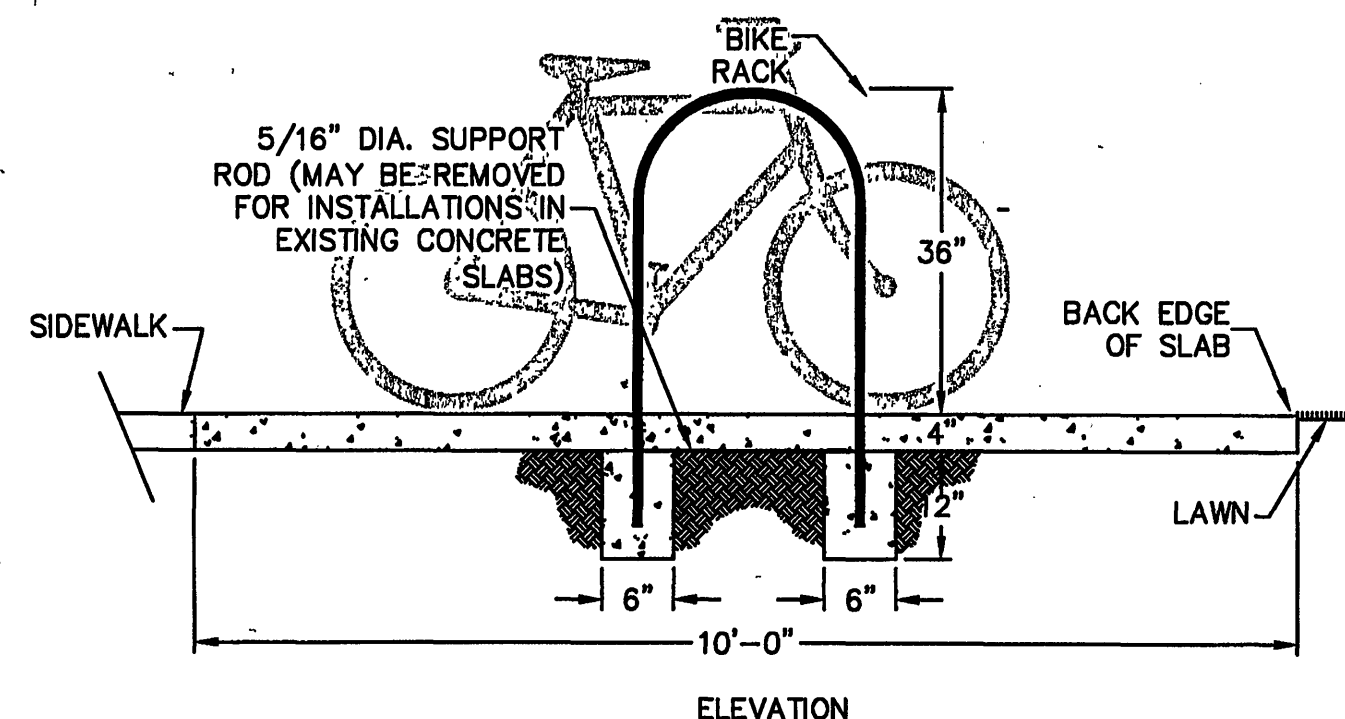


IF THE EXISTING OR PROPOSED SEWER OR LATERAL IS HORIZONTALLY (DIM. "A") WITHIN 10.0' OF ANY EXISTING OR PROPOSED WATERLINE, THE SEWER SHALL BE LAID IN A SEPARATE TRENCH AND THE TOP OF THE SEWER LINE SHALL BE AT LEAST 18" (DIM. "B") BELOW THE BOTTOM OF THE WATER LINE. WHEN IT IS IMPOSSIBLE TO OBTAIN PROPER HORIZONTAL OR VERTICAL SEPARATION, THE SEWER SHALL BE CONSTRUCTED OF "AWWA" APPROVED WATER PIPE AND SHALL BE PRESSURE TESTED IN PLACE WITHOUT LEAKAGE PRIOR TO BACKFILLING.

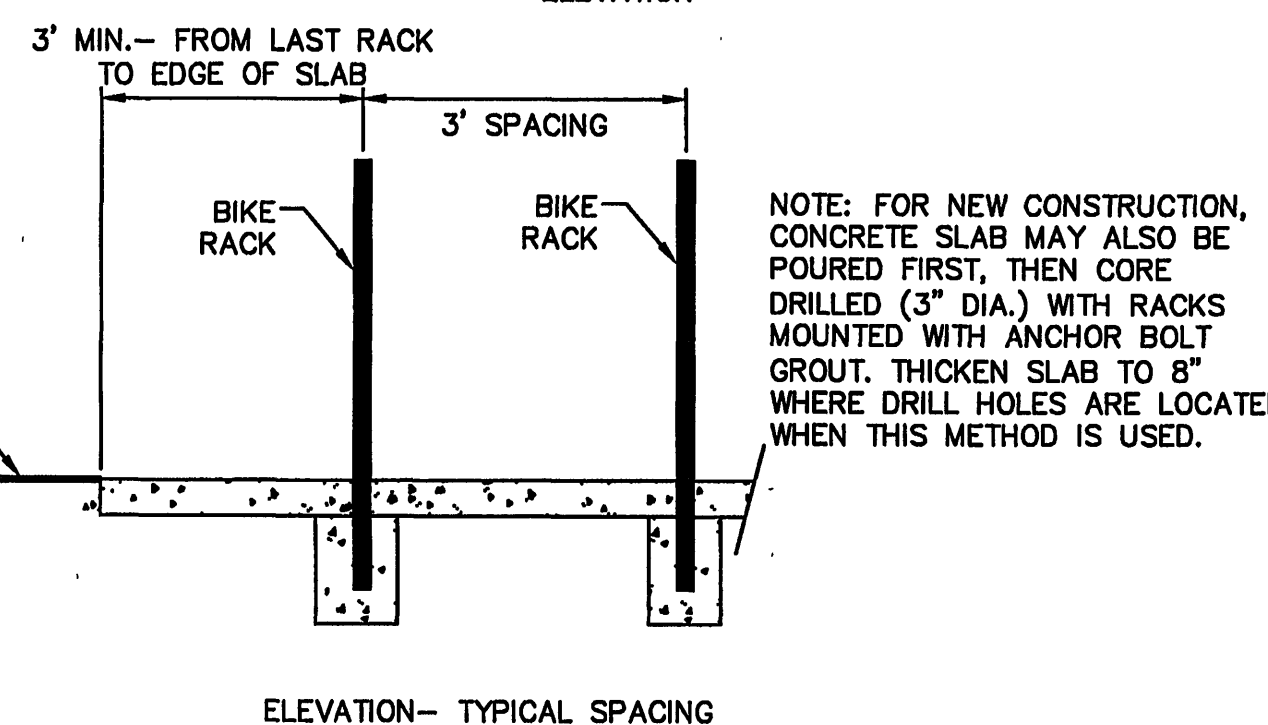
10 MINIMUM SEWER/WATER SEPARATION  
C4/C6 NO SCALE



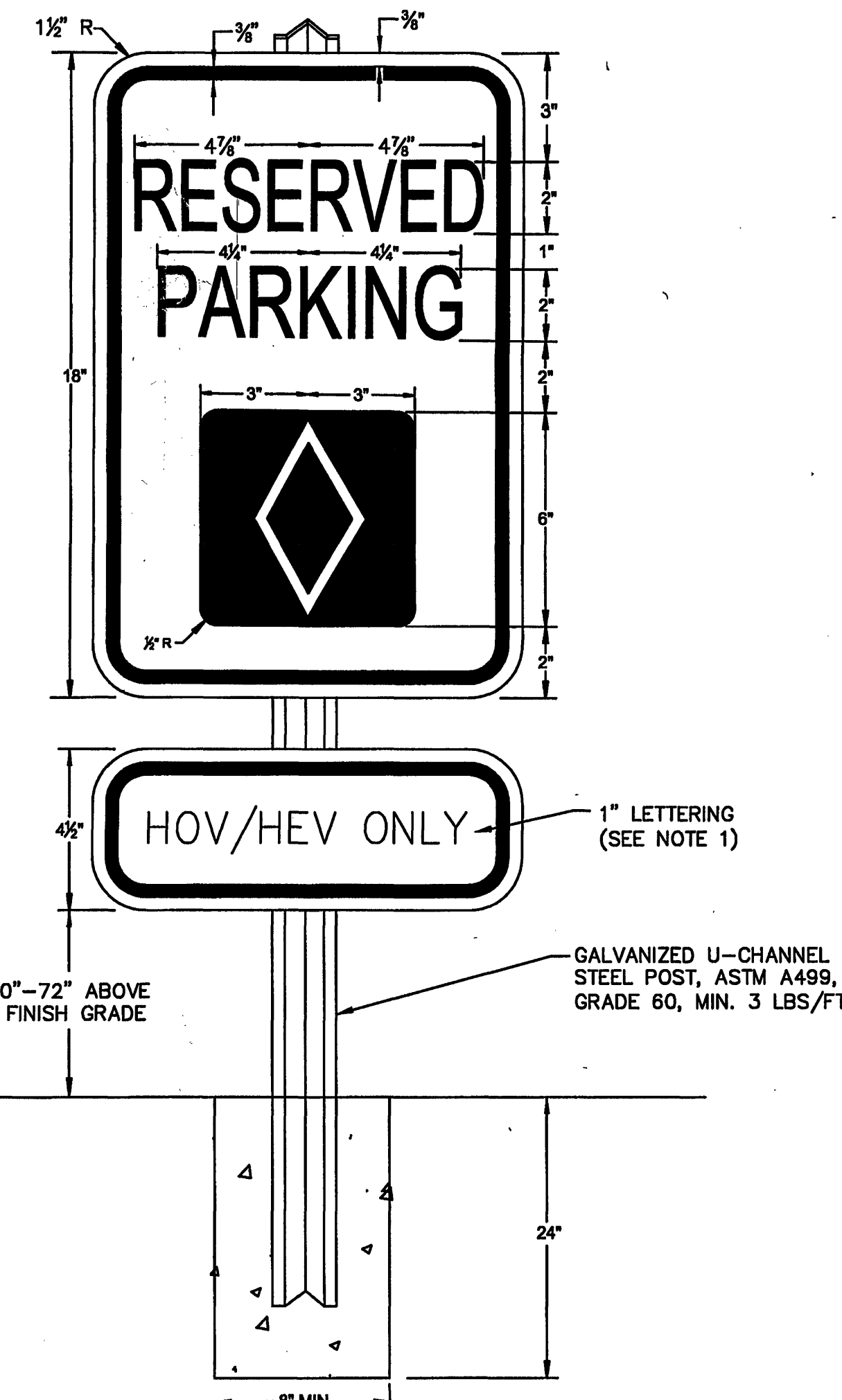
11 PAVEMENT REPAIR DETAIL  
C4/C6 NO SCALE



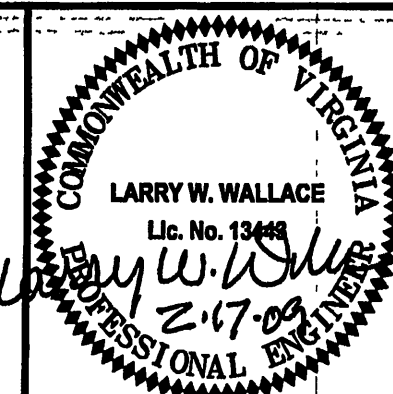
12 BIKE RACK DETAIL  
C4/C6 NO SCALE



NOTE: FOR NEW CONSTRUCTION, CONCRETE SLAB MAY ALSO BE POURED FIRST, THEN CORE DRILLED (3" DIA.) WITH RACKS MOUNTED WITH ANCHOR BOLT GROUT. THICKEN SLAB TO 8" WHERE DRILL HOLES ARE LOCATED WHEN THIS METHOD IS USED.



13 HOV PARKING SIGN  
C4/C6 NO SCALE



**Draper Aden Associates**  
Engineering • Surveying • Environmental Services  
Richmond, VA  
Charlottesville, VA  
Hampton Roads, VA  
Blacksburg, VA  
540-552-0444 Fax: 540-552-0231  
www.daa.com



**DETAILS**  
**CITY OF ROANOKE POLICE ACADEMY**  
CITY OF ROANOKE, VIRGINIA

**REVISIONS**  
11/13/2008  
CITY COMMENTS ADDRESSED  
01/12/2009  
2ND ROUND CITY COMMENTS ADDRESSED

DESIGNED BY  
DRAWN BY AVW/JGL  
CHECKED BY LWV  
SCALE 1" = 30"  
DATE NOVEMBER 20, 2008  
PROJECT NUMBER B07184-01

C-6