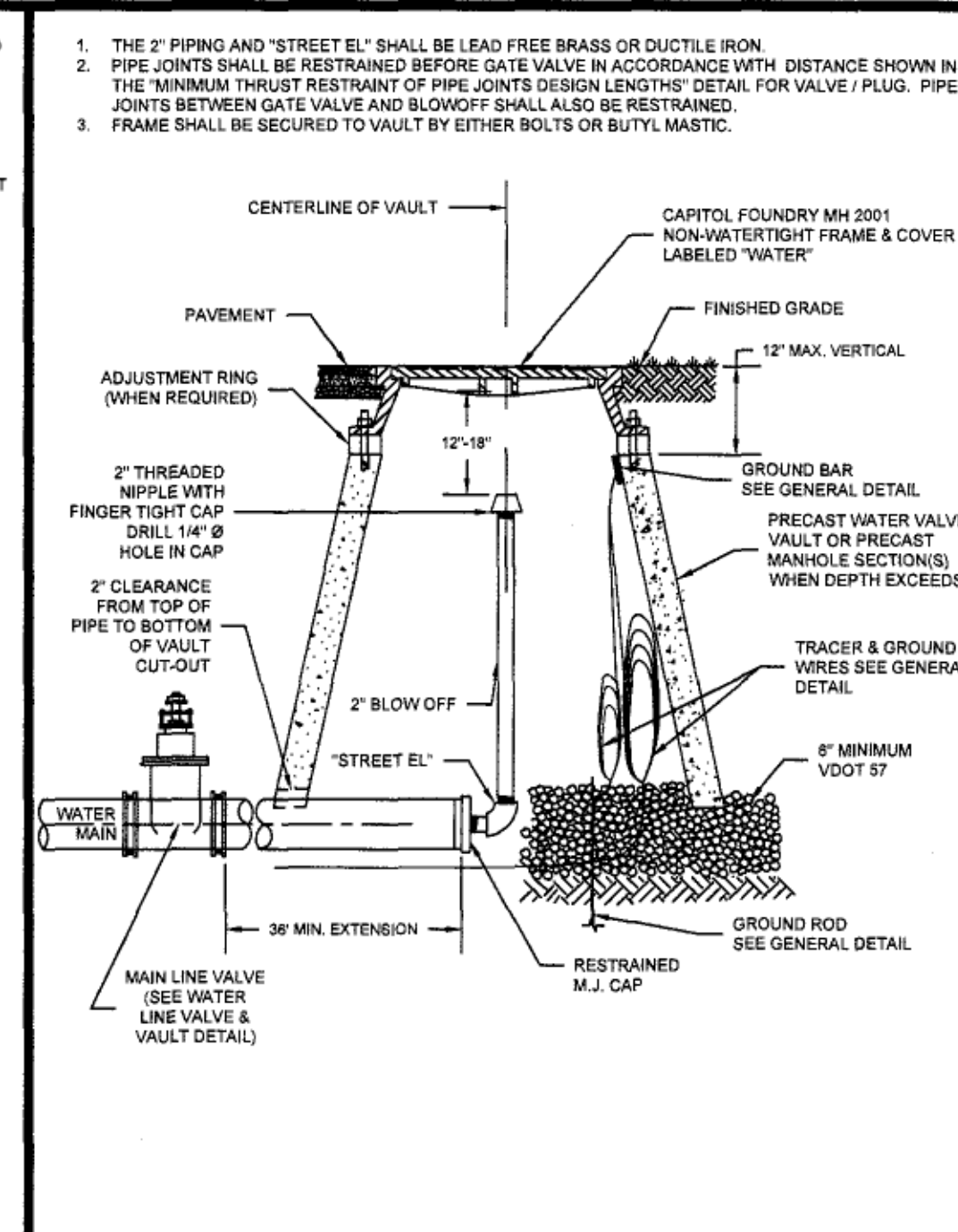


WESTERN VIRGINIA REGIONAL - CONSTRUCTION DETAIL

PERMANENT END
OF LINE BLOW-OFF ASSEMBLY

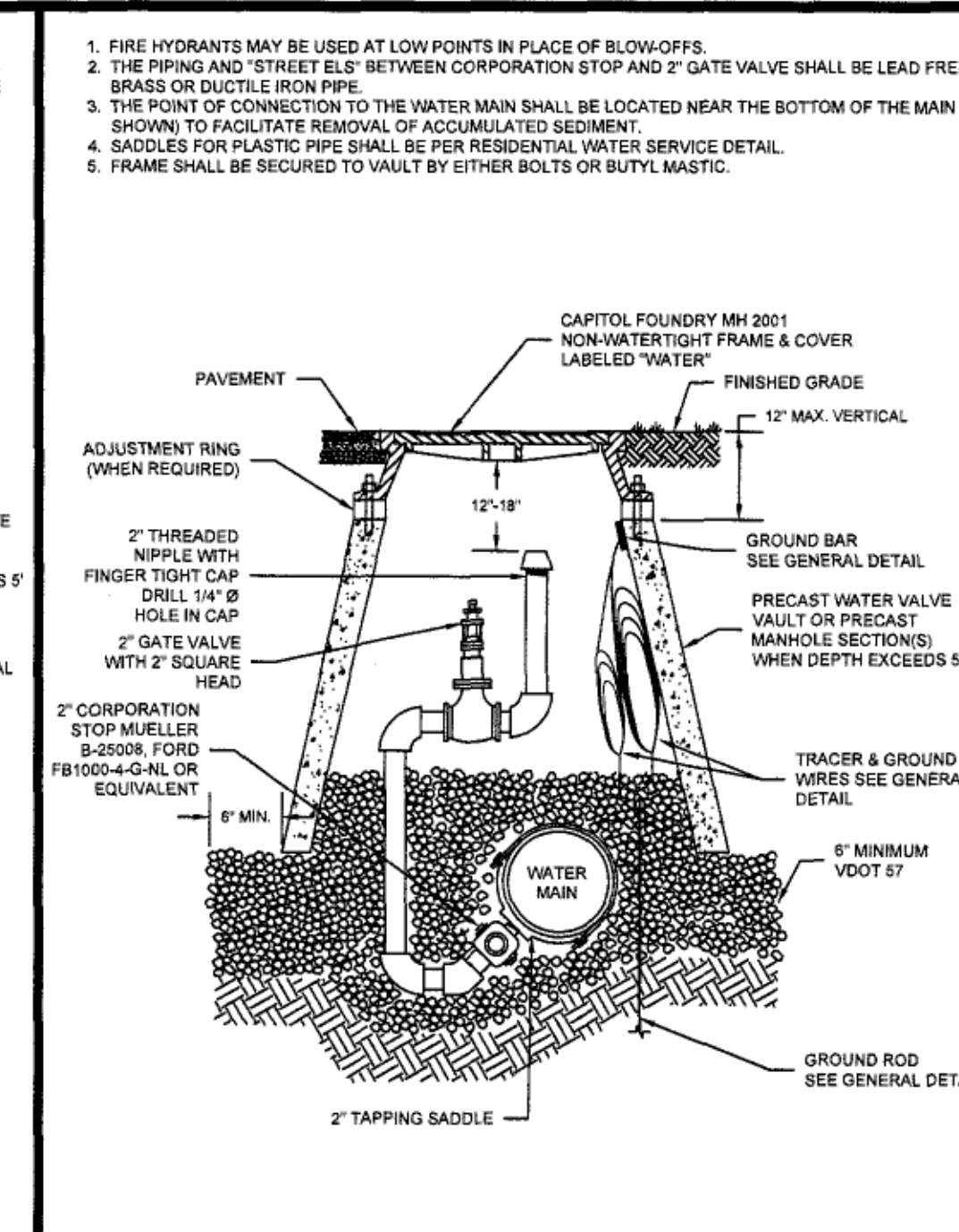
1000 10000 100000 1000000



WESTERN VIRGINIA REGIONAL - CONSTRUCTION DETAIL

TEMPORARY END OF LINE
BLOW-OFF ASSEMBLY

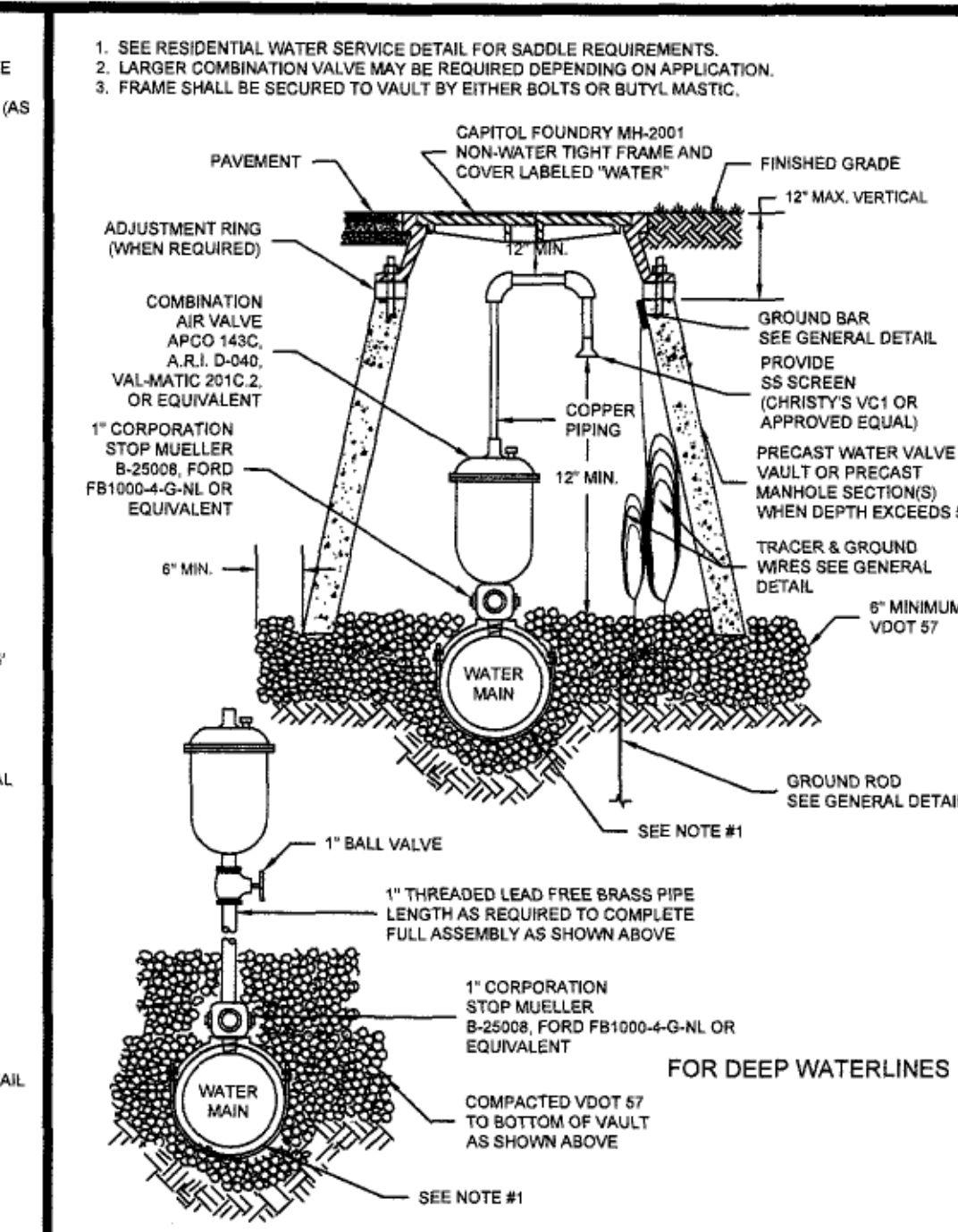
100



WESTERN VIRGINIA REGIONAL - CONSTRUCTION DETAIL

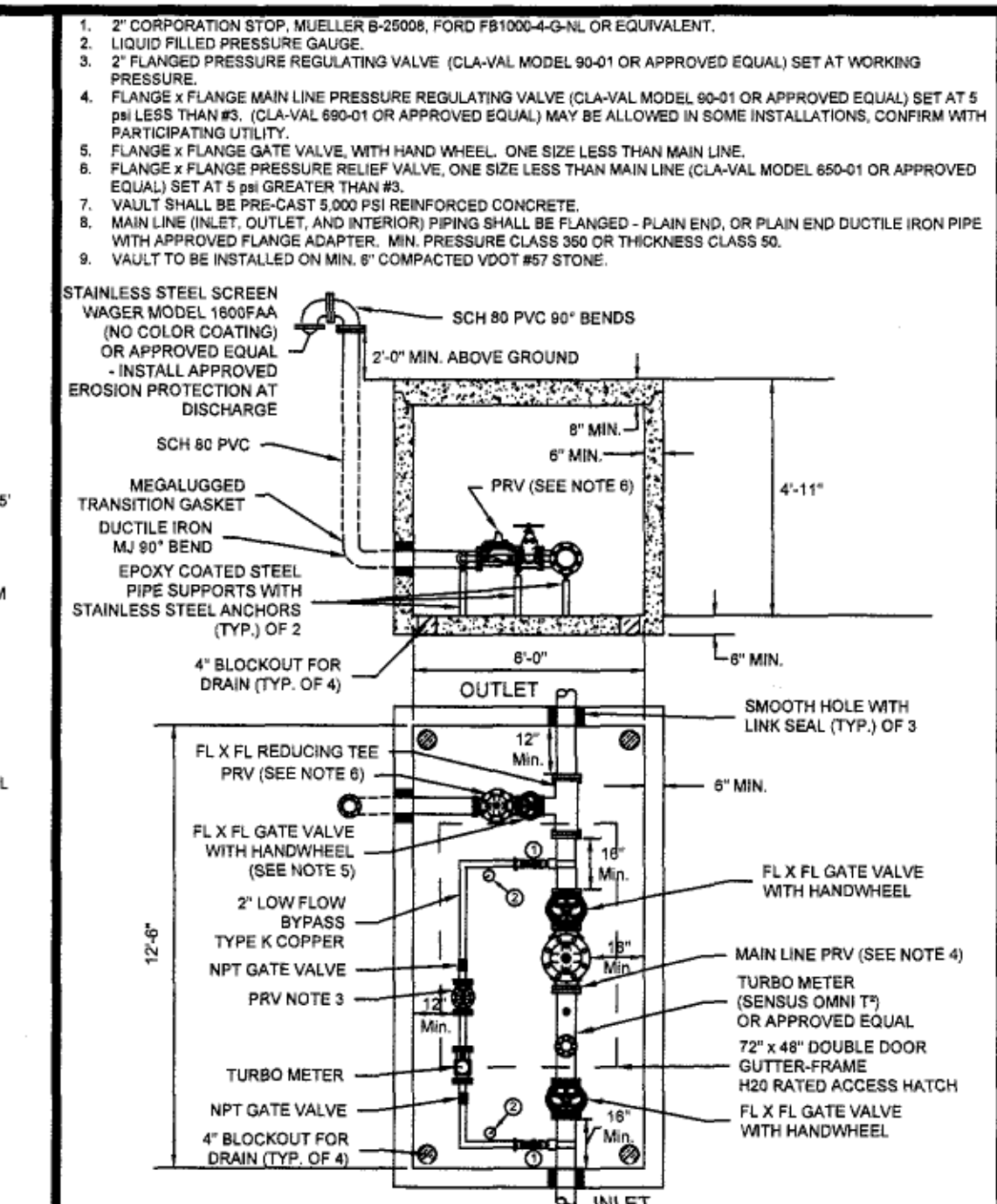
IN-LINE BLOW-OFF ASSEMBLY

1



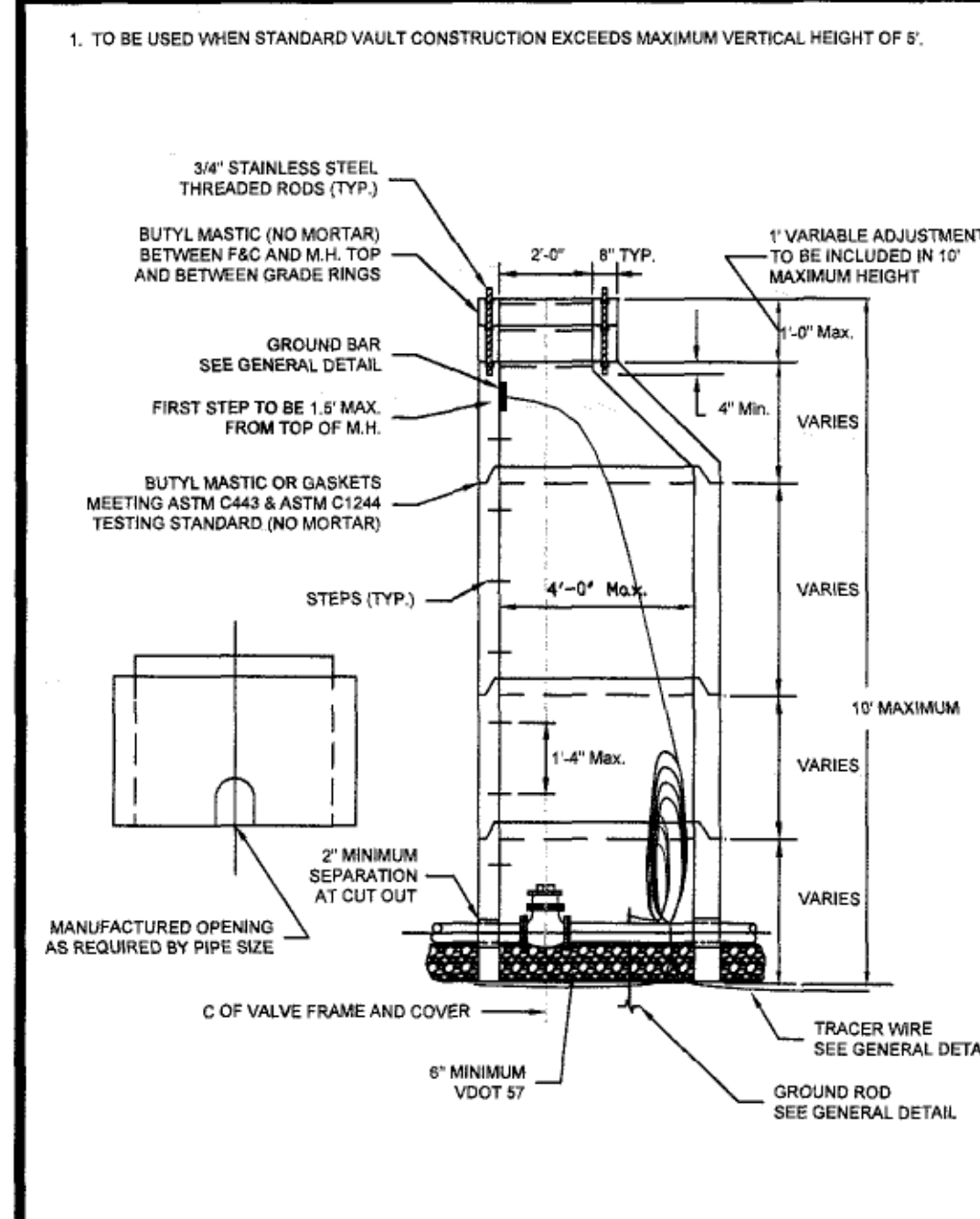
WESTERN VIRGINIA REGIONAL - CONSTRUCTION DATA

1



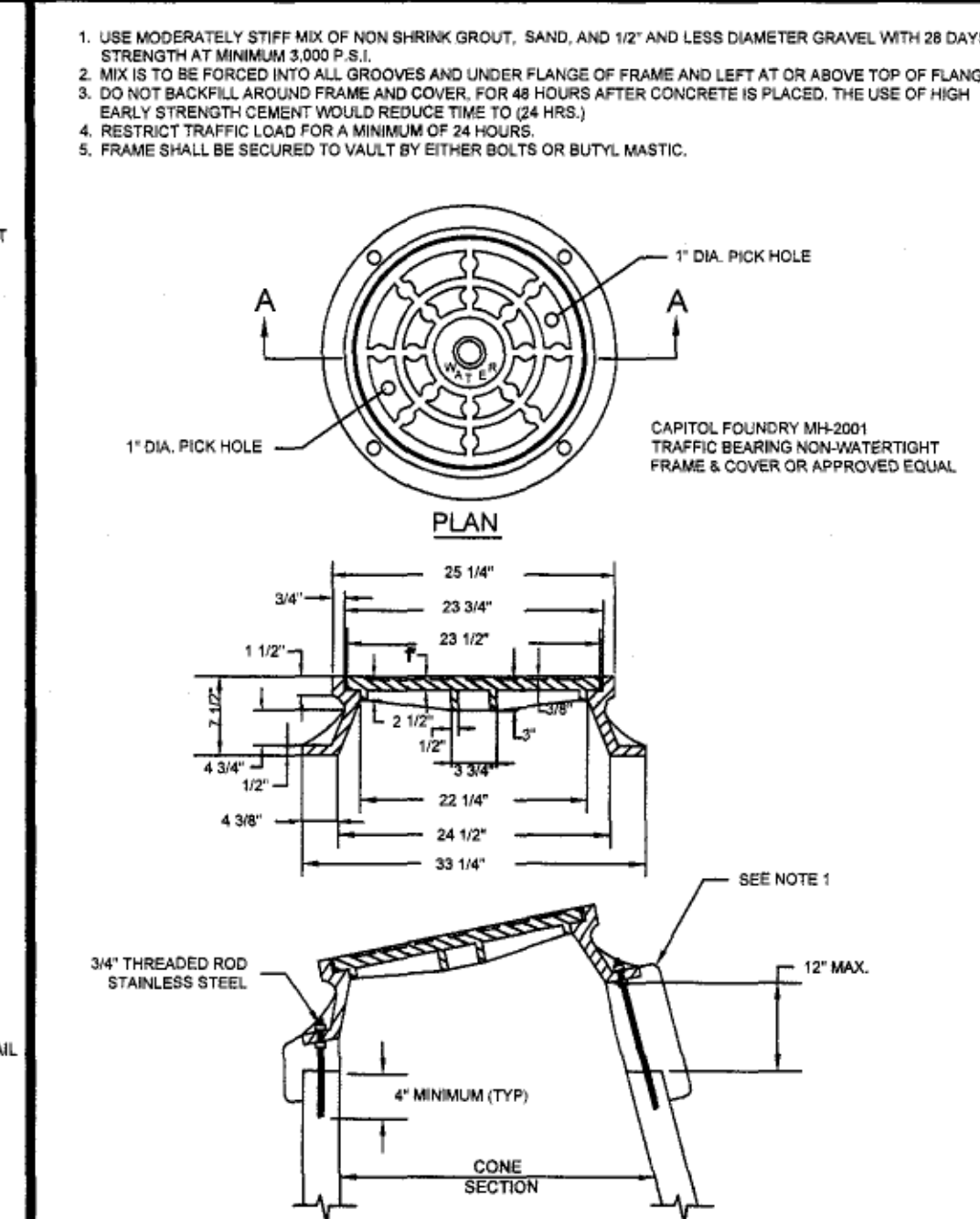
WESTERN VIRGINIA REGIONAL - CONSTRUCTION DETAIL

1



WESTERN VIRGINIA REGIONAL - CONSTRUCTION DETAIL

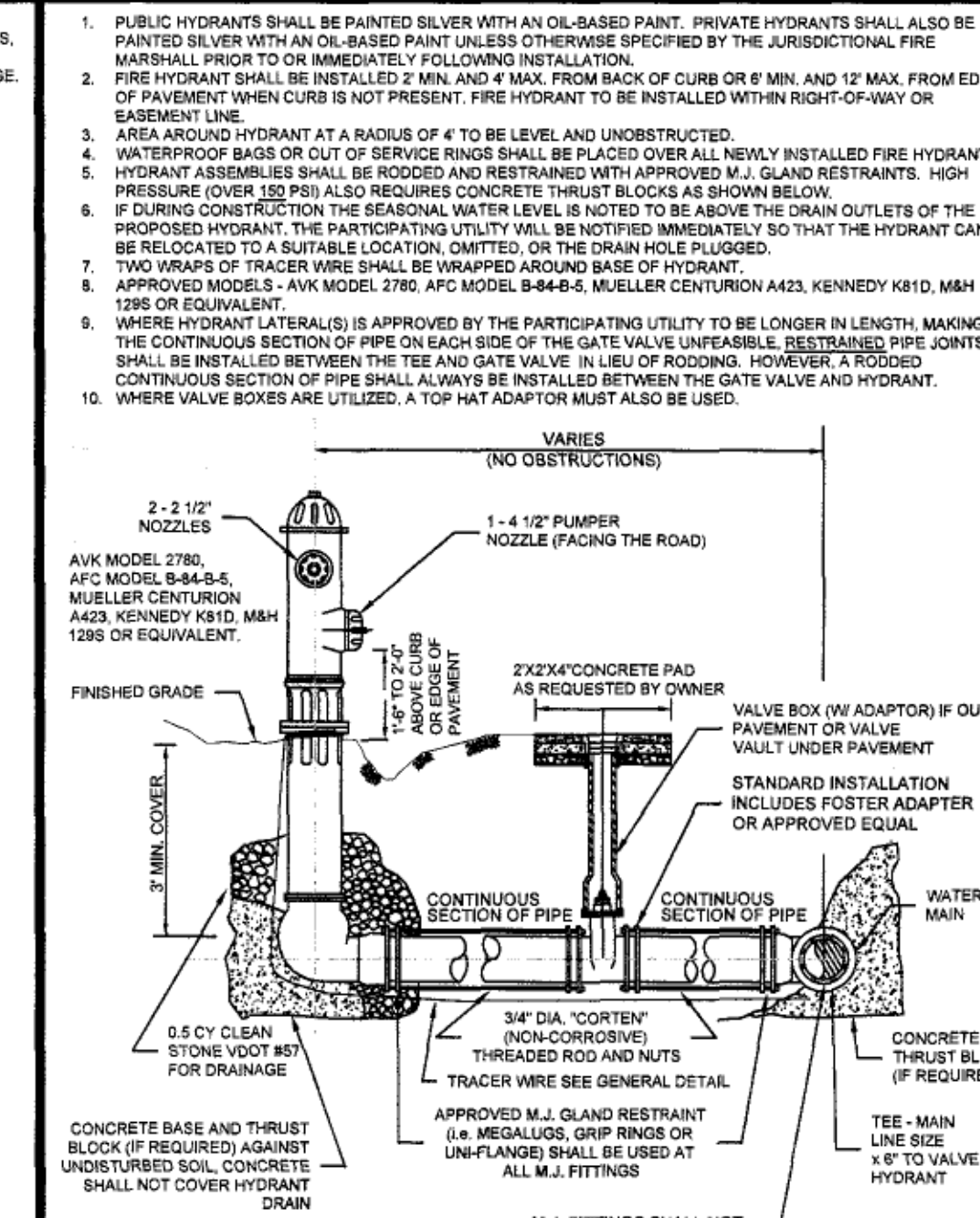
DEEP VALVE
VAULT (MANHOLE)



WESTERN VIRGINIA REGIONAL - CONSTRUCTION DETAIL

VAULT FRAME
AND COVER

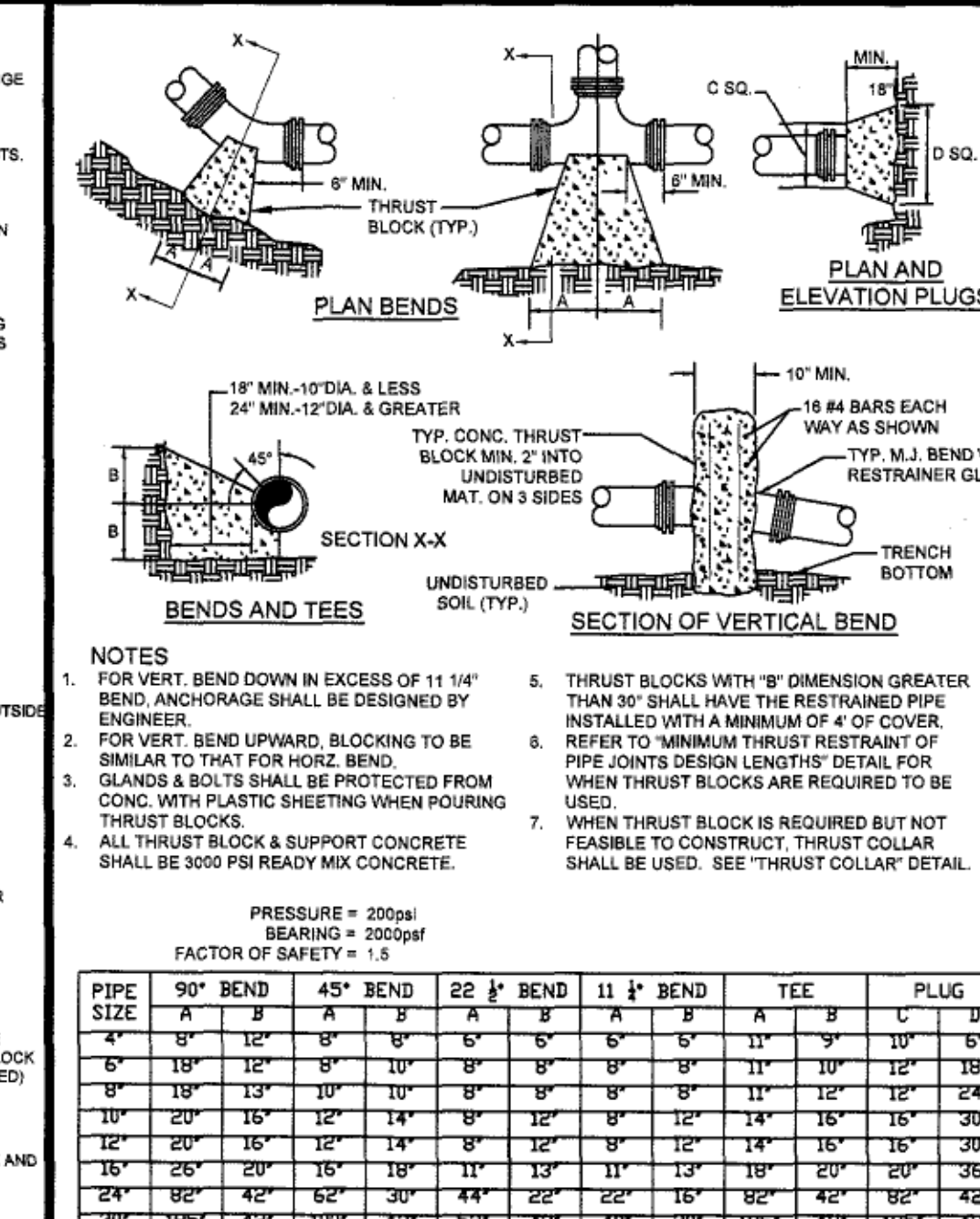
1



WESTERN VIRGINIA REGIONAL - CONSTRUCTION DETAIL

FIRE HYDRANT ASSEMBLY

1



WESTERN VIRGINIA REGIONAL - CONSTRUCTION DATA

1

PIPE SIZE	PIPE MATERIAL	90° BEND	45° BEND	22 1/2° BEND	11 1/2° BEND	VALVE / FLANGE (NOTE 2)	TEE BRANCH (NOTE 3)	REDUCER (NOTE 4)	45° VERT.	22 1/2° VERT.	11 1/2° VERT.
4"	D.L.	26'	19'	6'	3'	50'	26'	17'	21'	10'	5'
6"	D.L.	28'	21'	6'	3'	50'	26'	26'	21'	10'	5'
8"	D.L.	36'	21'	8'	4'	65'	41'	27'	27'	13'	7'
10"	D.L.	43'	21'	9'	5'	77'	53'	26'	32'	16'	8'
12"	D.L.	51'	21'	10'	5'	91'	67'	27'	38'	18'	9'
14"	D.L.	57'	21'	11'	5'	176'	99'	75'	38'	18'	9'
16"	D.L.	123'	51'	25'	13'	255'	134'	77'	51'	25'	13'
4"	PVC	27'	11'	3'	2'	60'	25'	30'	25'	10'	5'
6"	PVC	29'	21'	6'	3'	78'	25'	40'	32'	16'	8'
8"	PVC	37'	21'	8'	4'	102'	49'	43'	42'	21'	10'
10"	PVC	44'	21'	9'	5'	122'	68'	41'	51'	25'	12'
12"	PVC	51'	21'	11'	6'	143'	89'	42'	60'	29'	15'
14"	PVC	67'	36'	15'	9'	176'	100'	75'	60'	29'	15'
16"	PVC	123'	51'	25'	13'	255'	134'	90'	84'	40'	20'

FACTOR OF SAFETY = 1.5

1. ALL JOINTS SHALL BE RESTRAINED ON BOTH SIDES OF THE FITTING AND DOCUMENTED BY THE INSPECTOR FOR THE LENGTH SHOWN UNLESS OTHERWISE INDICATED.
2. RESTRAINED LENGTH SHOWN REFERS TO ANY DESIGNED OR POTENTIAL LINE STOP, INCLUDING GATE VALVES.
3. RESTRAINED LENGTH SHOWN REFERS TO THE BRANCH LINE ONLY. THE CONTINUOUS PIPE LINE OF THE MAIN RUN SHALL BE A MINIMUM OF 10' ON EACH SIDE OF THE TEE.
4. RESTRAINED LENGTH SHOWN IS BASED ON REDUCING PIPE DIAMETER TO ONE SIZE SMALLER PIPE. LINE MAY MAY VARY ANY SIZE REDUCING FITTING. ADDITIONAL CALCULATIONS BASED ON INSTALLATION. RESTRAINED LENGTH SHOWN IS UPSTREAM ON THE LARGE SIDE OF THE REDUCING FITTING.
5. **12" AND SMALLER DIAMETER:** IF UNDER 100 PSI WORKING PRESSURE, RESTRAINED JOINT(S) ARE TO BE USED. IF EQUAL TO OR OVER 100 PSI WORKING PRESSURE, BOTH THRU-BLOCK(S) AND RESTRAINED JOINT(S) IS BE USED.
6. **LARGER THAN 12" DIAMETER:** IF UNDER 100 PSI WORKING PRESSURE, RESTRAINED JOINT(S) ARE TO BE USED. IF EQUAL TO OR OVER 100 PSI WORKING PRESSURE, BOTH THRU-BLOCK(S) AND RESTRAINED JOINT(S) SHALL BE USED (UNLESS OTHERWISE APPROVED BY THE PARTICIPATING UTILITY).
7. FOR RESTRAINED JOINT PIPING REQUIREMENTS AT FITTING R, PVC AND R, DIJ MAY BE USED INTERCHANGEABLY WITH APPROVAL FROM PARTICIPATING UTILITY. CONTRACTOR MUST PLAN ACCORDINGLY FOR THE DIFFERENCE IN PVC AND DIJ BELL AND SPIGOT DIMENSIONS.

WESTERN VIRGINIA REGIONAL - CONSTRUCTION DETAIL

1