

DEMOLITION NOTES

DEMOLITION SHALL INCLUDE, UNLESS OTHERWISE NOTED ON DRAWINGS, REMOVAL OF EXISTING OBJECTS OR IMPROVEMENTS, WHETHER INDICATED ON THE DRAWINGS OR NOT, THAT WOULD IN THE OPINION OF THE OWNER, PREVENT OR INTERFERE WITH THE PROGRESS OR COMPLETION OF THE PROPOSED WORK.

PERMITS, FEES AND LICENSES SHALL BE SECURED AND PAID FOR BY THE CONTRACTOR, INCLUDING DISPOSAL CHARGES AS REQUIRED.

WORK SHALL COMPLY WITH THE REQUIREMENTS OF THE GOVERNING AUTHORITIES IN DEMOLITION OF EXISTING PAVEMENT, CURBS AND GUTTERS, DRAINAGE STRUCTURES AND UTILITIES AS MAY BE REQUIRED.

CONTRACTOR SHALL SAW-CUT ALL JOINTS WHERE EXISTING CURBING, PAVEMENT AND SIDEWALK IS TO BE DEMOLISHED AND NEW CONSTRUCTION JOINS THE EXISTING.

CONTRACTOR SHALL COMPLETELY FILL BELOW GRADE AREAS AND VOIDS FROM DEMOLITION OR REMOVAL OF STRUCTURES (UNDERGROUND FUEL STORAGE TANK, BASEMENTS, WELLS, ETC.) USING APPROVED SELECT FILL MATERIAL.

ALL EXISTING CURBING, CONCRETE SIDEWALK, ENTRANCES, BUILDING FOUNDATIONS AND TREES AND BRUSH THAT ARE DEMOLISHED SHALL BE REMOVED FROM THE SITE AND DISPOSED OF BY THE CONTRACTOR, BUILDING DEBRIS, ETC. SHALL NOT BE USED AS FILL MATERIAL ON THE SITE.

CONTRACTOR SHALL PROVIDE THE FOLLOWING PROTECTIONS AT THE JOB SITE:

MAKE ARRANGEMENTS, BEFORE INITIATING DEMOLITION, FOR RELOCATING, DISCONNECTION, REROUTING, ABANDONING, OR SIMILAR ACTION AS MAY BE REQUIRED RELATIVE TO UTILITIES AND OTHER UNDERGROUND PIPING, TO PERMIT WORK TO PROCEED WITHOUT DELAY. ARRANGEMENTS SHALL BE MADE IN ACCORDANCE WITH REGULATIONS OF AUTHORITIES OF UTILITIES MENTIONED, SUCH AS OVERHEAD AND UNDERGROUND POWER AND TELEPHONE LINES AND EQUIPMENT, GAS PIPING, STORM SEWERS, SANITARY SEWERS, OR WATER PIPING. CONTRACTOR SHALL NOT USE WATER WHEN IT MAY CREATE HAZARDOUS OR OBJECTIONABLE CONDITIONS, SUCH AS ICE, FLOODING AND/OR POLLUTION.

ENSURE SAFE PASSAGE OF PERSONS AROUND ALL AREAS OF DEMOLITION.

CONDUCT OPERATIONS TO PREVENT DAMAGE TO ADJACENT BUILDINGS, STRUCTURES, OTHER FACILITIES, OR INJURY TO PERSONS.

PROMPTLY REPAIR DAMAGES CAUSED TO ADJACENT FACILITIES BY DEMOLITION OPERATIONS AT NO ADDITIONAL COST TO THE OWNER.

MAINTAIN EXISTING UTILITIES INDICATED TO REMAIN, KEEP IN SERVICE, AND PROTECT AGAINST DAMAGE DURING DEMOLITION OPERATIONS. PREVENT INTERRUPTION OF EXISTING UTILITIES SERVING OCCUPIED OR USED FACILITIES, EXCEPT WHEN AUTHORIZED IN WRITING BY AUTHORITIES HAVING JURISDICTION. PROVIDE TEMPORARY SERVICES DURING INTERRUPTIONS TO EXISTING UTILITIES AS ACCEPTABLE TO GOVERNING JURISDICTION.

USE WATER SPRINKLING AND OTHER SUITABLE METHODS TO LIMIT DUST AND DIRT RISING AND SCATTERING IN AIR TO LOWEST PRACTICAL LEVEL.

COMPLY WITH GOVERNING REGULATIONS PERTAINING TO ENVIRONMENTAL PROTECTION.

G.C. TO VERIFY THE LOCATIONS OF ALL EXISTING UTILITIES PRIOR TO CONSTRUCTION.

USE WATER SPRINKLING AND OTHER SUITABLE METHODS TO LIMIT DUST AND DIRT RISING AND SCATTERING IN AIR TO LOWEST PRACTICAL LEVEL.

COMPLY WITH GOVERNING REGULATIONS PERTAINING TO ENVIRONMENTAL PROTECTION.

G.C. TO VERIFY THE LOCATIONS OF ALL EXISTING UTILITIES PRIOR TO CONSTRUCTION.

USE WATER SPRINKLING AND OTHER SUITABLE METHODS TO LIMIT DUST AND DIRT RISING AND SCATTERING IN AIR TO LOWEST PRACTICAL LEVEL.

COMPLY WITH GOVERNING REGULATIONS PERTAINING TO ENVIRONMENTAL PROTECTION.

G.C. TO VERIFY THE LOCATIONS OF ALL EXISTING UTILITIES PRIOR TO CONSTRUCTION.

USE WATER SPRINKLING AND OTHER SUITABLE METHODS TO LIMIT DUST AND DIRT RISING AND SCATTERING IN AIR TO LOWEST PRACTICAL LEVEL.

COMPLY WITH GOVERNING REGULATIONS PERTAINING TO ENVIRONMENTAL PROTECTION.

G.C. TO VERIFY THE LOCATIONS OF ALL EXISTING UTILITIES PRIOR TO CONSTRUCTION.

USE WATER SPRINKLING AND OTHER SUITABLE METHODS TO LIMIT DUST AND DIRT RISING AND SCATTERING IN AIR TO LOWEST PRACTICAL LEVEL.

COMPLY WITH GOVERNING REGULATIONS PERTAINING TO ENVIRONMENTAL PROTECTION.

G.C. TO VERIFY THE LOCATIONS OF ALL EXISTING UTILITIES PRIOR TO CONSTRUCTION.

USE WATER SPRINKLING AND OTHER SUITABLE METHODS TO LIMIT DUST AND DIRT RISING AND SCATTERING IN AIR TO LOWEST PRACTICAL LEVEL.

COMPLY WITH GOVERNING REGULATIONS PERTAINING TO ENVIRONMENTAL PROTECTION.

G.C. TO VERIFY THE LOCATIONS OF ALL EXISTING UTILITIES PRIOR TO CONSTRUCTION.

USE WATER SPRINKLING AND OTHER SUITABLE METHODS TO LIMIT DUST AND DIRT RISING AND SCATTERING IN AIR TO LOWEST PRACTICAL LEVEL.

COMPLY WITH GOVERNING REGULATIONS PERTAINING TO ENVIRONMENTAL PROTECTION.

G.C. TO VERIFY THE LOCATIONS OF ALL EXISTING UTILITIES PRIOR TO CONSTRUCTION.

USE WATER SPRINKLING AND OTHER SUITABLE METHODS TO LIMIT DUST AND DIRT RISING AND SCATTERING IN AIR TO LOWEST PRACTICAL LEVEL.

COMPLY WITH GOVERNING REGULATIONS PERTAINING TO ENVIRONMENTAL PROTECTION.

G.C. TO VERIFY THE LOCATIONS OF ALL EXISTING UTILITIES PRIOR TO CONSTRUCTION.

USE WATER SPRINKLING AND OTHER SUITABLE METHODS TO LIMIT DUST AND DIRT RISING AND SCATTERING IN AIR TO LOWEST PRACTICAL LEVEL.

COMPLY WITH GOVERNING REGULATIONS PERTAINING TO ENVIRONMENTAL PROTECTION.

G.C. TO VERIFY THE LOCATIONS OF ALL EXISTING UTILITIES PRIOR TO CONSTRUCTION.

USE WATER SPRINKLING AND OTHER SUITABLE METHODS TO LIMIT DUST AND DIRT RISING AND SCATTERING IN AIR TO LOWEST PRACTICAL LEVEL.

COMPLY WITH GOVERNING REGULATIONS PERTAINING TO ENVIRONMENTAL PROTECTION.

G.C. TO VERIFY THE LOCATIONS OF ALL EXISTING UTILITIES PRIOR TO CONSTRUCTION.

USE WATER SPRINKLING AND OTHER SUITABLE METHODS TO LIMIT DUST AND DIRT RISING AND SCATTERING IN AIR TO LOWEST PRACTICAL LEVEL.

COMPLY WITH GOVERNING REGULATIONS PERTAINING TO ENVIRONMENTAL PROTECTION.

G.C. TO VERIFY THE LOCATIONS OF ALL EXISTING UTILITIES PRIOR TO CONSTRUCTION.

USE WATER SPRINKLING AND OTHER SUITABLE METHODS TO LIMIT DUST AND DIRT RISING AND SCATTERING IN AIR TO LOWEST PRACTICAL LEVEL.

COMPLY WITH GOVERNING REGULATIONS PERTAINING TO ENVIRONMENTAL PROTECTION.

G.C. TO VERIFY THE LOCATIONS OF ALL EXISTING UTILITIES PRIOR TO CONSTRUCTION.

USE WATER SPRINKLING AND OTHER SUITABLE METHODS TO LIMIT DUST AND DIRT RISING AND SCATTERING IN AIR TO LOWEST PRACTICAL LEVEL.

COMPLY WITH GOVERNING REGULATIONS PERTAINING TO ENVIRONMENTAL PROTECTION.

G.C. TO VERIFY THE LOCATIONS OF ALL EXISTING UTILITIES PRIOR TO CONSTRUCTION.

USE WATER SPRINKLING AND OTHER SUITABLE METHODS TO LIMIT DUST AND DIRT RISING AND SCATTERING IN AIR TO LOWEST PRACTICAL LEVEL.

COMPLY WITH GOVERNING REGULATIONS PERTAINING TO ENVIRONMENTAL PROTECTION.

G.C. TO VERIFY THE LOCATIONS OF ALL EXISTING UTILITIES PRIOR TO CONSTRUCTION.

USE WATER SPRINKLING AND OTHER SUITABLE METHODS TO LIMIT DUST AND DIRT RISING AND SCATTERING IN AIR TO LOWEST PRACTICAL LEVEL.

COMPLY WITH GOVERNING REGULATIONS PERTAINING TO ENVIRONMENTAL PROTECTION.

G.C. TO VERIFY THE LOCATIONS OF ALL EXISTING UTILITIES PRIOR TO CONSTRUCTION.

USE WATER SPRINKLING AND OTHER SUITABLE METHODS TO LIMIT DUST AND DIRT RISING AND SCATTERING IN AIR TO LOWEST PRACTICAL LEVEL.

SANITARY SEWER SCHEDULE:

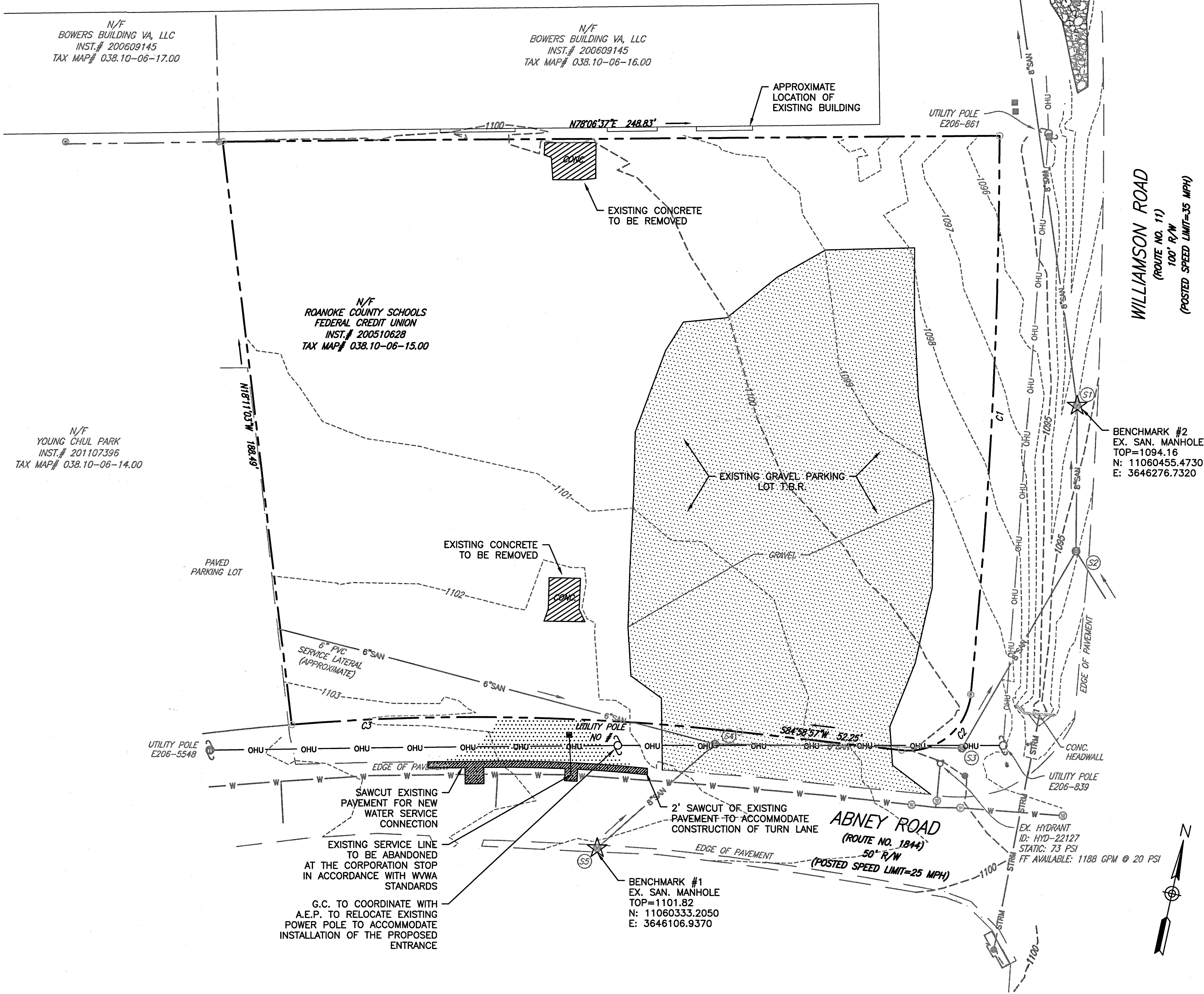
51 SANITARY SEWER MANHOLE
TOP=1094.16'
4" DIP INV. IN=1088.63'
8" PVC INV. IN=1087.96' FR 52
8" PVC INV. IN=1087.83'
8" PVC INV. OUT=1087.81'
BENCH=1088.83'

52 SANITARY SEWER MANHOLE
TOP=1096.10'
8" PVC INV. IN=1090.27' FR 53
8" PVC INV. IN=1089.40'
8" PVC INV. OUT=1089.39' TO 51
BENCH=1090.99'

53 SANITARY SEWER MANHOLE
TOP=1100.00'
8" PVC INV. IN=1092.89' FR 54
8" PVC INV. OUT=1092.82' TO 52
BENCH=1093.97'

54 SANITARY SEWER MANHOLE
TOP=1101.63'
6" PVC INV. IN=1094.28'
8" PVC INV. IN=1093.55' FR 55
8" PVC INV. OUT=1093.47' TO 53
BENCH=1094.28'

55 SANITARY SEWER MANHOLE
TOP=1101.82'
8" PVC INV. IN=1094.32'
8" PVC INV. OUT=1094.32' TO 54
BENCH=1095.15'



CURVE TABLE					
CURVE	DELTA	RADIUS	ARC	TAN	BEARING
C1	5°32'18"	1859.60'	179.75'	89.95'	S08°30'13"E
C2	90°42'51"	20.00'	31.67'	20.25'	S39°37'27"W
C3	10°58'35"	750.00'	143.68'	72.06'	S79°29'27"W

LEGEND:

- | | | | | | |
|---|--------------------------------|---|---------------------------|---|-----------------------------|
| ☆ | BENCHMARK | ⦿ | HANDICAP PARKING | ⊙ | EX SANITARY SEWER MANHOLE |
| ⊙ | CLEANOUT | ⦿ | IRON ROD FOUND | ⊙ | PROP SANITARY SEWER MANHOLE |
| ⦿ | FIBER OPTIC MARKER | ⦿ | IRON ROD SET | ⊙ | SIGN |
| ⦿ | GAS LINE MARKER | ⦿ | LIGHT POLE | ⦿ | STORM MANHOLE |
| ⦿ | GUY ANCHOR | ⦿ | EX. LIGHT POLE | ⦿ | EX. TELEPHONE |
| ⦿ | GRATE | ⦿ | P.O.B. POINT OF BEGINNING | ⦿ | UTILITY POLE |
| ⦿ | EX TREE | ⦿ | POWER METER | ⦿ | WATER METER |
| ⦿ | PROP. FIRE HYDRANT | ⦿ | MONUMENT | ⦿ | TURN ARROW |
| ⦿ | PROP. GATE VALVE | ⦿ | EX. POWER POLE | ⦿ | STRAIGHT ARROW |
| ⦿ | W.L. REDUCER | ⦿ | BLOW-OFF VALVE | ⦿ | STOP BAR |
| ⦿ | PROP. SIAMESE CONNECTION (FDC) | ⦿ | | ⦿ | |
| ⦿ | PROP. LIGHT FIXTURE | ⦿ | | ⦿ | |

ABBREVIATIONS:

- | | | | | | |
|--------|--------------------------------|--------|--------------------------|-------|---------------------------------------|
| AH/FH | ARROW HEAD TOP OF FIRE HYDRANT | EW | EXISTING | RR | RAILROAD |
| APPROX | APPROXIMATE | FDN | FOUNDATION | SAN | SANITARY |
| ASPH | ASPHALT | FF | FINISHED FLOOR | SBL | SOUTH BOUND LANE |
| BC | BOTTOM OF CURB | FG | FINISH GRADE | SD | STORM DRAIN |
| BIT | BITUMINOUS | GBE | GRADE BREAK ELEVATION | SECT | SECTION |
| BLDG | BUILDING | GBS | GRADE BREAK STATION | SE | SLOPE EASEMENT |
| BLK | BLOCK | HOA | HOMEOWNERS ASSOCIATION | SS | SANITARY SEWER |
| BM | BENCHMARK | HPT | HIGH POINT | SSE | SANITARY SEWER EASEMENT |
| BVCE | BEGIN VERT. CURVE STA. | HSD | HEADLIGHT SIGHT DISTANCE | STA | STATION |
| BVCS | BEGIN VERT. CURVE ELEV. | INTX | INTERSECTION | STD | STANDARD |
| BW | BOTTOM OF WALL | INV | INVERT | STO | STORAGE |
| CAM | CAMERA | IP | IRON PIN | SYS | SIDE YARD SETBACK |
| CB | CINDER BLOCK | LT | LEFT | TBM | TEMPORARY BENCHMARK |
| C&G | CURB & GUTTER | LVC | LENGTH OF VERTICAL CURVE | TBR | TO BE REMOVED |
| CMP | CORRUGATED METAL PIPE | MH | MANHOLE | TC | TOP OF CURB |
| CONC | CONCRETE | MIN | MINIMUM | TEL | TELEPHONE |
| COR | CORNER | MBL | MINIMUM BUILDING LINE | TRANS | TRANSFORMER |
| DBL | DOUBLE | MON | MONUMENT | TW | TOP OF WALL |
| DEFL | DEFLECTION | NBL | NORTH BOUND LANE | TYP | TYPICAL |
| DI | DROP INLET | PROP | PROPOSED | UGP | UNDERGROUND POWER |
| DIA | DIAMETER | PUE | PUBLIC UTILITY EASEMENT | VDOT | VIRGINIA DEPARTMENT OF TRANSPORTATION |
| DS | DOWN SPOUT | PVMT | PAVEMENT | VERT | VERTICAL |
| ELEC | ELECTRIC | R | RADIUS | VSD | VERTICAL SIGHT DISTANCE |
| ELEV | ELEVATION | RT | RIGHT | WBL | WEST BOUND LANE |
| ENTR | ENTRANCE | R.O.W. | RIGHT OF WAY | YD | YARD |
| EP | EDGE OF PAVEMENT | REQD | REQUIRED | | |
| EVCE | END VERT. CURVE STA. | RR | RAILROAD | | |



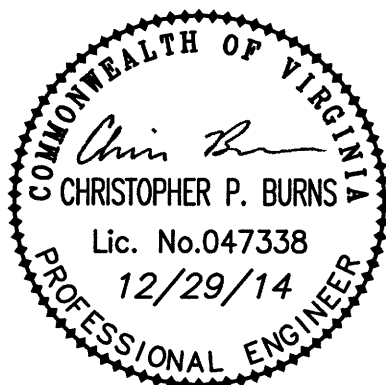
www.balzer.cc

Roanoke
New River Valley
Richmond
Staunton
Harrisonburg

RESIDENTIAL LAND DEVELOPMENT ENGINEERING
SITE DEVELOPMENT ENGINEERING
LAND USE PLANNING & ZONING
LANDSCAPE ARCHITECTURE
LAND SURVEYING
ARCHITECTURE
STRUCTURAL ENGINEERING
TRANSPORTATION ENGINEERING
ENVIRONMENTAL & SOIL SCIENCE
WETLAND DELINEATIONS & STREAM EVALUATIONS

Balzer and Associates, Inc.

1208 Corporate Circle
Roanoke, VA 24018
540-772-9580
FAX 540-772-8050



R.V.C.C.U. BRANCH BANK

605 ABNEY ROAD

EXISTING CONDITIONS & DEMO PLAN

HOLLINS DISTRICT

ROANOKE COUNTY, VIRGINIA

DRAWN BY CLP

DESIGNED BY CLP

CHECKED BY CPB

DATE 10/3/2014

SCALE 1"=20'

REVISIONS:

11/4/2014

11/20/2014

SHEET NO.

C2

JOB NO. R1400134.00