

# REDBUD LANE FORCE MAIN EXTENSION

## SHEET INDEX

C01 UTILITY PLAN  
C02 NOTES AND DETAILS

## WATER AND SEWER NOTES

### GENERAL:

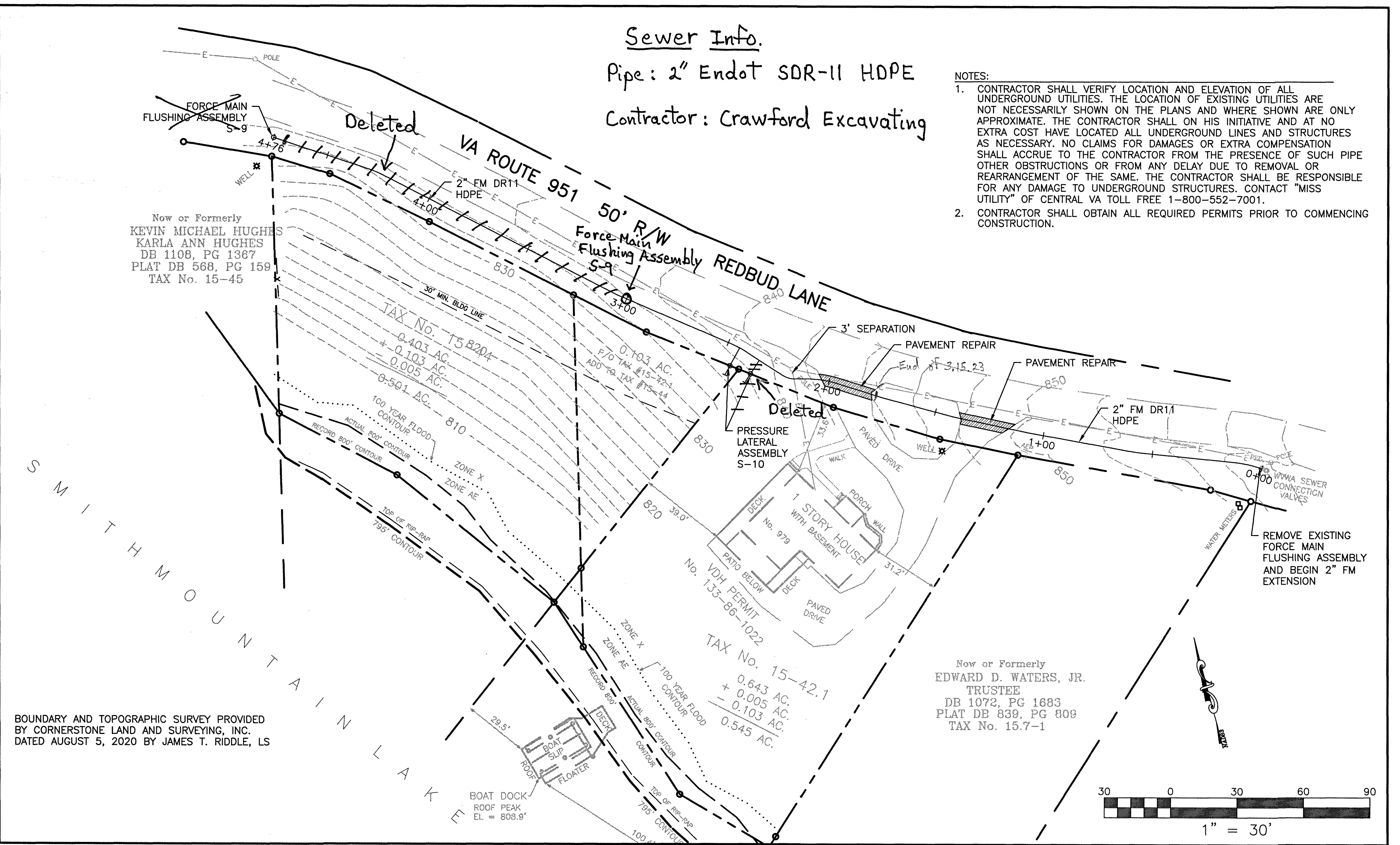
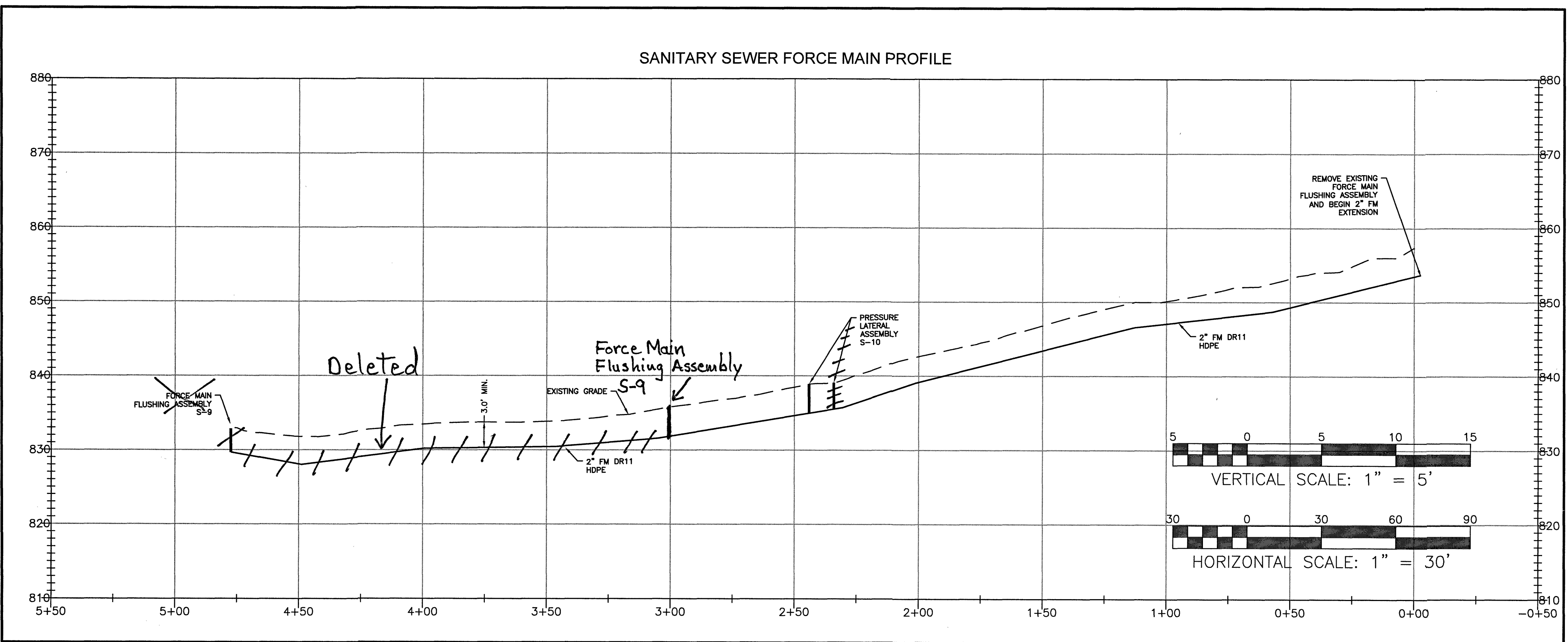
1. ALL CONSTRUCTION METHODS AND MATERIALS SHALL CONFORM TO THE LATEST WESTERN VIRGINIA REGIONAL DESIGN AND CONSTRUCTION STANDARDS, LATEST EDITION.
2. OBTAIN ALL REQUIRED PERMITS AND NOTIFY APPROPRIATE OFFICIALS AT LEAST THREE (3) DAYS PRIOR TO COMMENCEMENT OF WORK. OBTAIN INFORMATION FROM WESTERN VIRGINIA WATER AUTHORITY AND/OR ROANOKE COUNTY CONCERNING PERMITS AND CONNECTIONS TO EXISTING LINES. WVA SHALL BE NOTIFIED IN WRITING AND MARK SINK SHALL BE CONTACTED AT (540) 537-3460.
3. ALL WORK SHALL BE SUBJECT TO INSPECTION BY WESTERN VIRGINIA WATER AUTHORITY AND/OR ROANOKE COUNTY. NOTIFY APPROPRIATE OFFICIALS PRIOR TO COMMENCEMENT OF WORK.
4. SITE SHALL BE TO SUBGRADE PRIOR TO INSTALLATION OF UTILITIES. ALL UTILITIES SHALL BE IN PLACE PRIOR TO PLACEMENT OF PAVEMENT BASE MATERIAL.
5. USE SELECT MATERIAL FREE FROM FROST, LARGE CLODS, STONES, AND DEBRIS FOR BACKFILL FROM THE BOTTOM OF THE TRENCH TO TWELVE (12) INCHES ABOVE THE PIPE.
6. MINIMIZE ANY DISTURBANCE TO EXISTING WATER SERVICE, SEWER LINES OR ANY OTHER UTILITY DURING CONSTRUCTION AND PROVIDE QUALITY WORKMANSHIP.
7. MAKE ALL PIPE JOINTS IN ACCORDANCE WITH THE MANUFACTURER'S INSTRUCTIONS AND/OR WESTERN VIRGINIA WATER AUTHORITY SPECIFICATIONS. MAKE JOINTS BETWEEN DIFFERENT PIPE MATERIALS WITH STANDARD FITTINGS MANUFACTURED FOR THE PURPOSE.
8. MAINTAIN ALL WATER LINES AT TEN (10) FEET HORIZONTAL SEPARATION FROM SEWER LINES AND MANHOLES; MEASURE THE DISTANCE EDGE-TO-EDGE. WHEN LOCAL CONDITIONS PREVENT THE DESIRED HORIZONTAL SEPARATION, THE WATERLINE MAY BE LAID CLOSER TO THE SEWER OR MANHOLE PROVIDED THAT THE BOTTOM OF THE WATERLINE SHALL BE AT LEAST EIGHTEEN (18) INCHES ABOVE THE TOP OF THE SEWER. WHERE THIS VERTICAL SEPARATION CANNOT BE OBTAINED, ADDITIONAL MEASURES WILL BE REQUIRED IN ACCORDANCE WITH WVA STANDARDS.
9. LOCATE AND UNCOVER VALVE VAULTS AND MANHOLES AFTER PAVING AND ADJUST TO FINAL GRADE, IF NECESSARY.
10. REFER TO ARCHITECTURAL PLANS FOR EXACT LOCATIONS WHERE UTILITIES ENTER THE BUILDING.
11. PRIOR TO COMMENCING WITH ANY UNDERGROUND PIPE CONSTRUCTION OR GRADING (EXCAVATION), THE GENERAL CONTRACTOR SHALL CALL MISS UTILITY OF VIRGINIA (TOLL FREE 1-800-552-7001) AT LEAST 48 HOURS PRIOR TO COMMENCING. THE G.C. IS RESPONSIBLE FOR ANY DAMAGE CAUSED TO ANY UTILITY, PUBLIC OR PRIVATE, AS A RESULT OF NOT CONTACTING MISS UTILITY AND SHALL BE REPAIRED AT NO ADDITIONAL COST TO THE OWNER/DEVELOPER.
12. EXISTING UTILITY LOCATIONS SHOWN ARE A RESULT OF FIELD SURVEYS, AVAILABLE RECORDS, AND PREVIOUSLY APPROVED PLANS. LOCATIONS ARE APPROXIMATE. IT IS THE GENERAL CONTRACTOR'S RESPONSIBILITY TO VERIFY THE LOCATION AND ELEVATION OF ALL UNDERGROUND UTILITIES SHOWN ON THE PLANS IN AREAS OF CONSTRUCTION PRIOR TO STARTING WORK. CONTACT THE ENGINEER IMMEDIATELY IF: 1) ANY LOCATION OR ELEVATION IS DIFFERENT FROM THAT SHOWN ON THE PLANS. 2) IF THERE APPEARS TO BE ANY CONFLICT. UPON DISCOVERY OF ANY UTILITY NOT SHOWN ON THE PLANS, G.C. SHALL CALL "MISS UTILITY" OF VIRGINIA AND/OR ROANOKE COUNTY AND/OR WESTERN VIRGINIA WATER AUTHORITY.
13. PROVIDE A CONTINUOUS AND UNIFORM BEDDING IN THE TRENCH FOR ALL PIPE. REMOVE STONES AND ROCKS FOUND IN THE TRENCH FOR A DEPTH OF AT LEAST SIX (6) INCHES BELOW THE BOTTOM OF THE PIPE AND TAMP SELECT FILL BEDDING PROVIDED. AFTER THE PIPE HAS BEEN PLACED IN THE TRENCH, BACKFILL THE TRENCH WITH SELECT MATERIAL, THOROUGHLY COMPACT TO 90% (95% UNDER PAVEMENT OR CONCRETE SLAB) OF THE STANDARD PROCTOR (ASTM D-698) USING CARE NOT TO DAMAGE THE PIPE. USE VDOT STANDARD PB-1 TRENCH FOR STORM SEWER AND UB-1 FOR SANITARY SEWER AND WATER.
14. PLACE BACKFILL FOR ALL WATER AND SEWER UTILITIES IN ACCORDANCE WITH WESTERN VIRGINIA WATER AUTHORITY SPECIFICATIONS, AND THE FOLLOWING CRITERIA: 1) BACKFILL NO TRENCH UNTIL INSPECTED BY WESTERN VIRGINIA WATER AUTHORITY. MATERIALS USED FOR BACKFILL FROM THE BOTTOM OF THE TRENCH TO TOP OF THE PIPE SHALL BE CRUSHER RUN, OR APPROVED EQUAL MATERIAL. THOROUGHLY AND CAREFULLY COMPACT THE BACKFILL MATERIAL. 2) COMPACT BACKFILL BY MECHANICAL TAMPING THROUGHOUT THE DEPTH OF THE TRENCH TO ENSURE A SUITABLE SUBBASE ACCEPTABLE TO THE ROAD ENGINEER. IF THE MATERIAL TAKEN FROM THE DITCH IS NOT SUITABLE FOR BACKFILLING, REMOVE IT AND USE AN ACCEPTABLE MATERIAL FOR BACKFILLING THE TRENCH.
15. IN AREAS OF WATER LINE CONSTRUCTION, GRADES SHALL BE WITHIN SIX (6) INCHES OF FINAL GRADE PRIOR TO BEGINNING CONSTRUCTION.
16. MINIMUM COVER OVER ALL WATER AND SANITARY SEWER LINES SHALL BE THREE (3) FEET.
17. THE CONTRACTOR SHALL INSTALL ALL WATER SERVICE CONNECTIONS AND METER BOXES.
18. CONNECT PIPE TO MANHOLES THROUGH PRE CAST OPENINGS AND JOIN WITH EITHER A FLEXIBLE BOOT ADAPTER OR A PIPE SEAL GASKET.
19. FIELD CORRECTIONS SHALL BE APPROVED BY THE WESTERN VIRGINIA WATER AUTHORITY PRIOR TO SUCH CONSTRUCTION.

### SEWER NOTES:

1. ALL SANITARY SEWER CONNECTIONS TO EXISTING LINES SHALL BE COORDINATED WITH AND PERFORMED BY THE WESTERN VIRGINIA WATER AUTHORITY.
2. ALL WATER AND SANITARY SEWER FACILITIES ARE TO BE INSTALLED ACCORDING TO THE WESTERN VIRGINIA WATER AUTHORITY DESIGN AND CONSTRUCTION STANDARDS.

### WATER NOTES:

1. ALL WATER CONNECTIONS TO EXISTING LINES SHALL BE COORDINATED WITH AND PERFORMED BY THE WESTERN VIRGINIA WATER AUTHORITY.
2. ALL WATER AND SANITARY SEWER FACILITIES ARE TO BE INSTALLED ACCORDING TO THE WESTERN VIRGINIA WATER AUTHORITY DESIGN AND CONSTRUCTION STANDARDS.



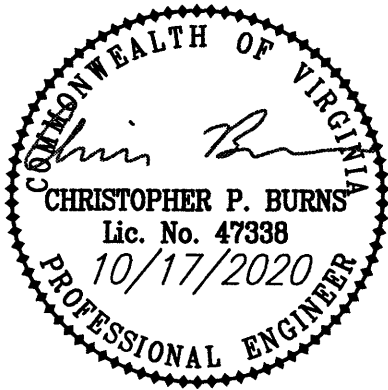
Inspector As-Built K. Winslow 3.24.23



**BALZER  
& ASSOCIATES**  
PLANNERS / ARCHITECTS  
ENGINEERS / SURVEYORS

Roanoke / Richmond  
New River Valley / Staunton  
Harrisonburg / Lynchburg

www.balzer.cc  
1208 Corporate Circle  
Roanoke, VA 24018  
540.772.9580



REDBUD LANE - FORCE MAIN EXTENSION

UTILITY PLAN  
As-Built (Inspector)

DRAWN BY JSF  
DESIGNED BY JSF  
CHECKED BY CPB  
DATE 10/17/2020  
SCALE 1" = 30'  
REVISIONS

C01  
PROJECT NO. 04200072.00