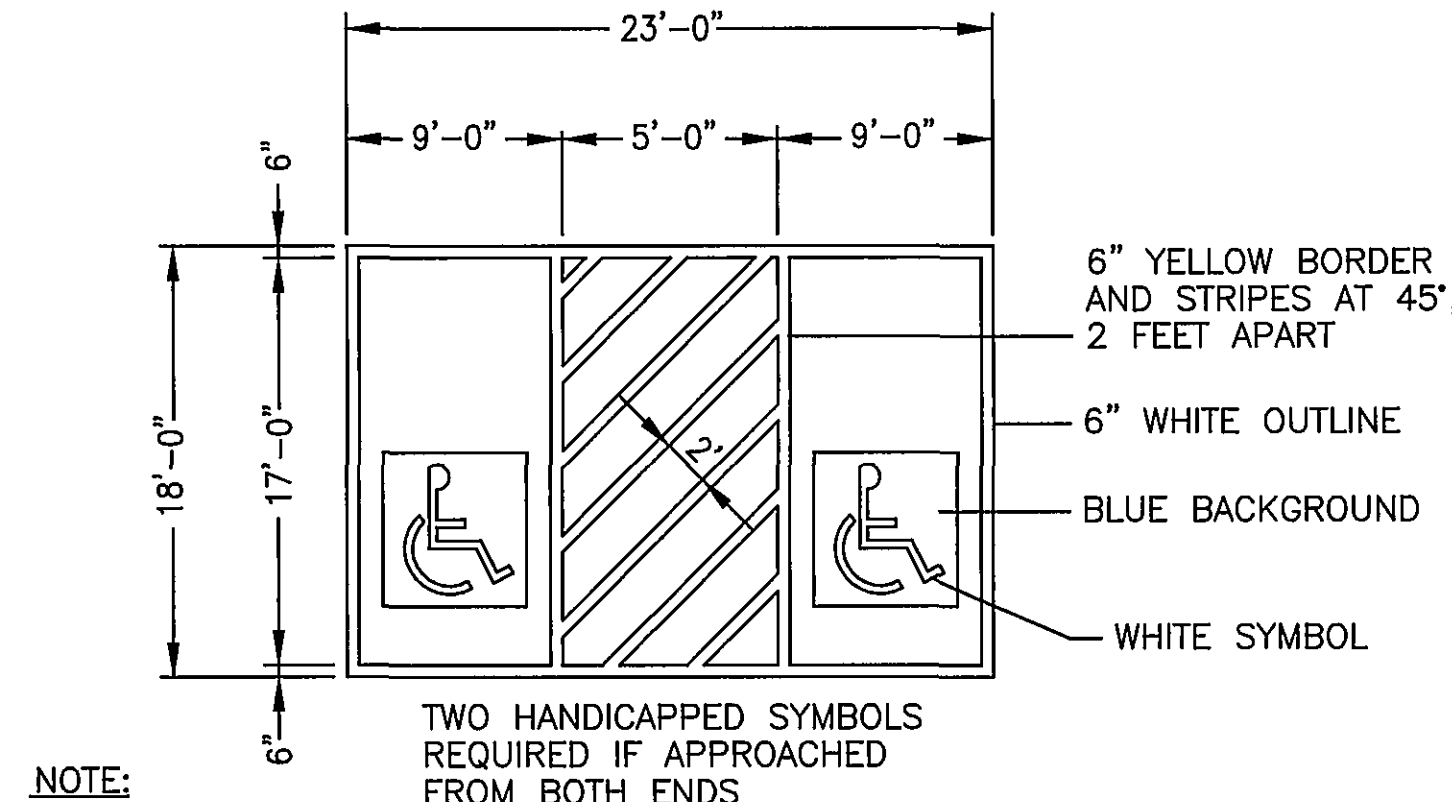


HANDICAP SIGNS SHALL BE LOCATED BEHIND WALK, CENTERED IN FRONT OF EACH HANDICAPPED PARKING SPACES.

VAN HANDICAPPED PARKING DETAILS

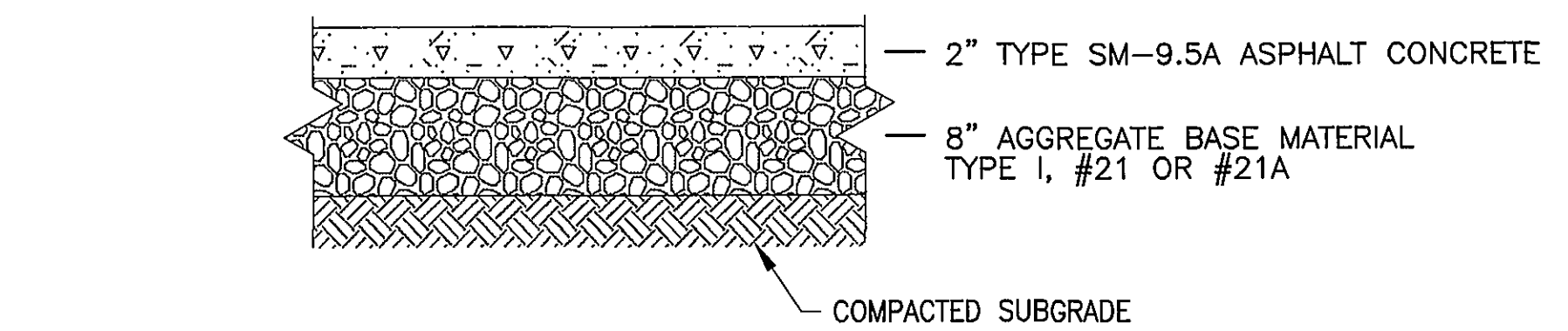
NO SCALE



HANDICAP SIGNS SHALL BE LOCATED BEHIND WALK, CENTERED IN FRONT OF EACH HANDICAPPED PARKING SPACES.

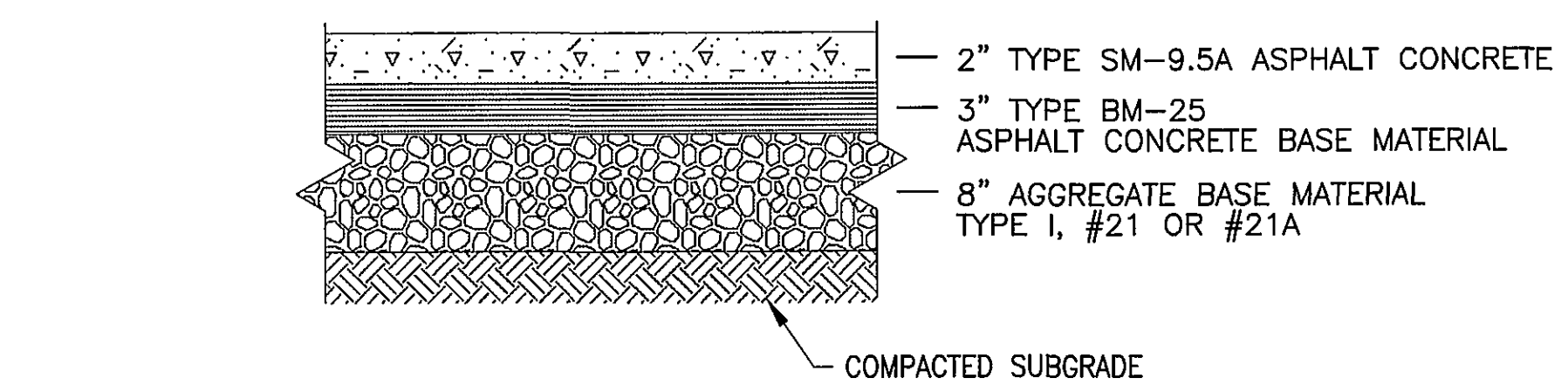
HANDICAPPED PARKING DETAILS

NO SCALE



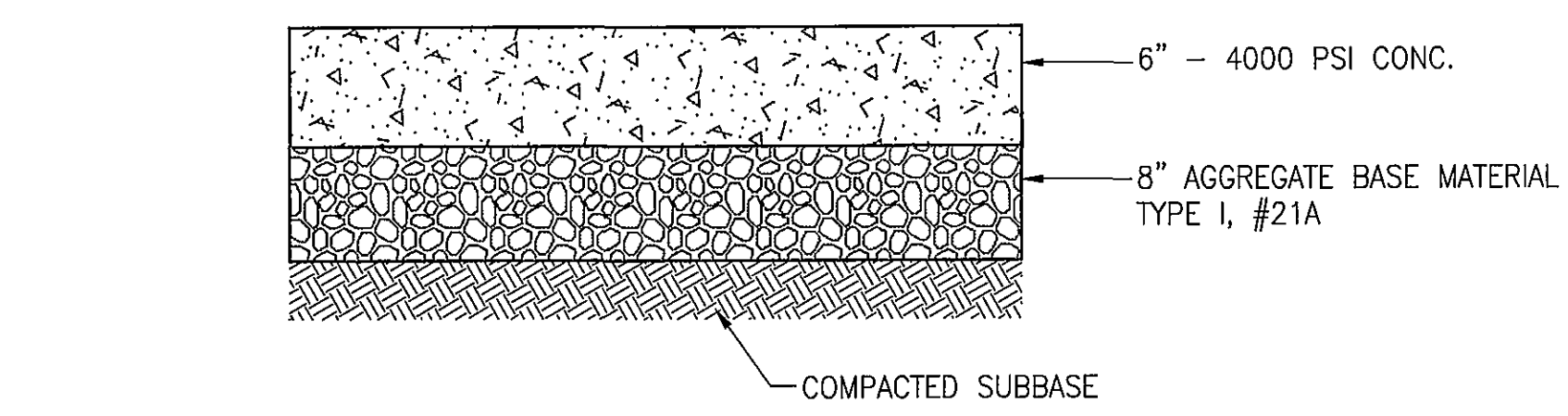
PAVEMENT SECTION - TYPE A - REGULAR DUTY

NO SCALE



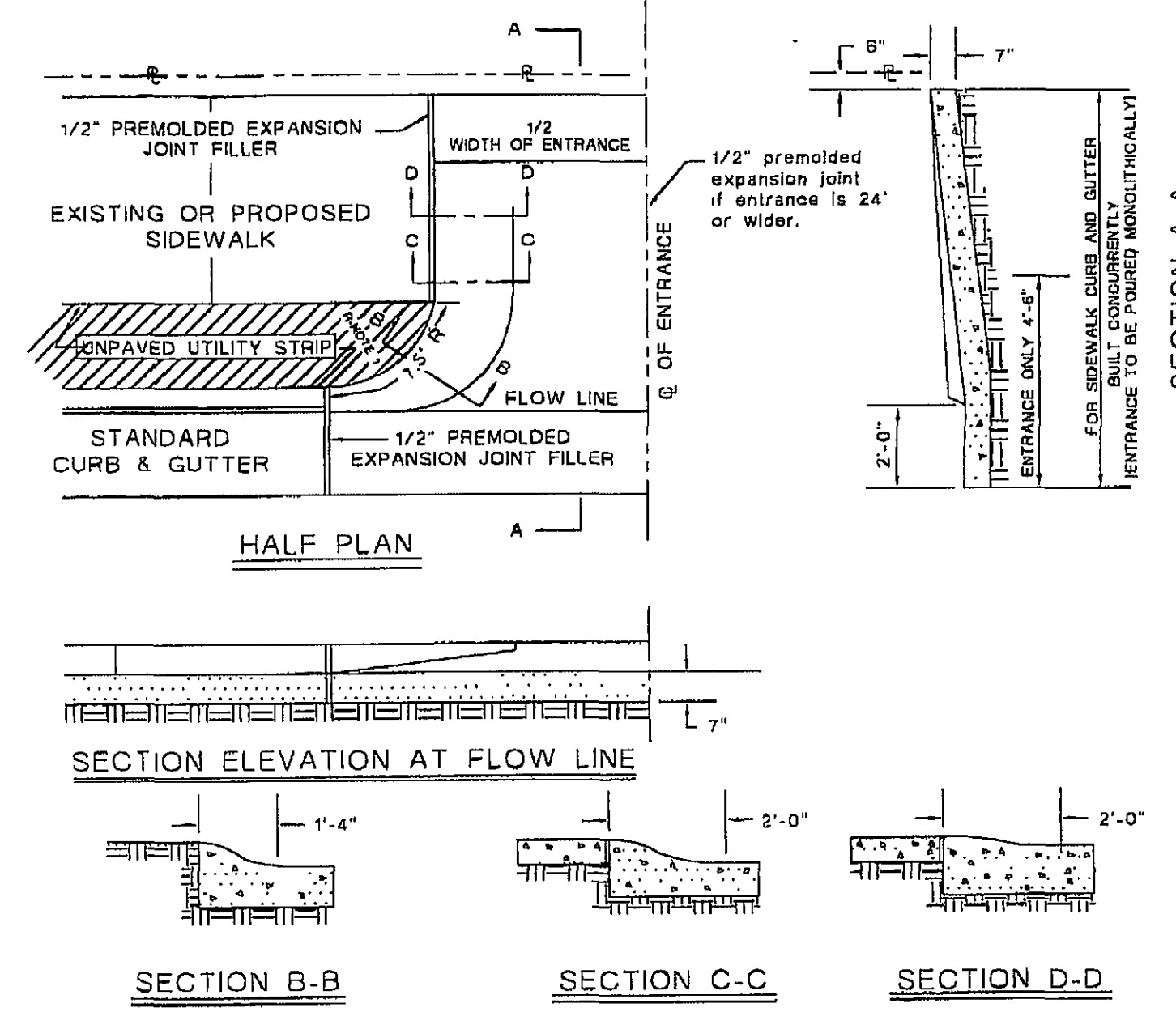
PAVEMENT SECTION - TYPE B - HEAVY DUTY

NO SCALE

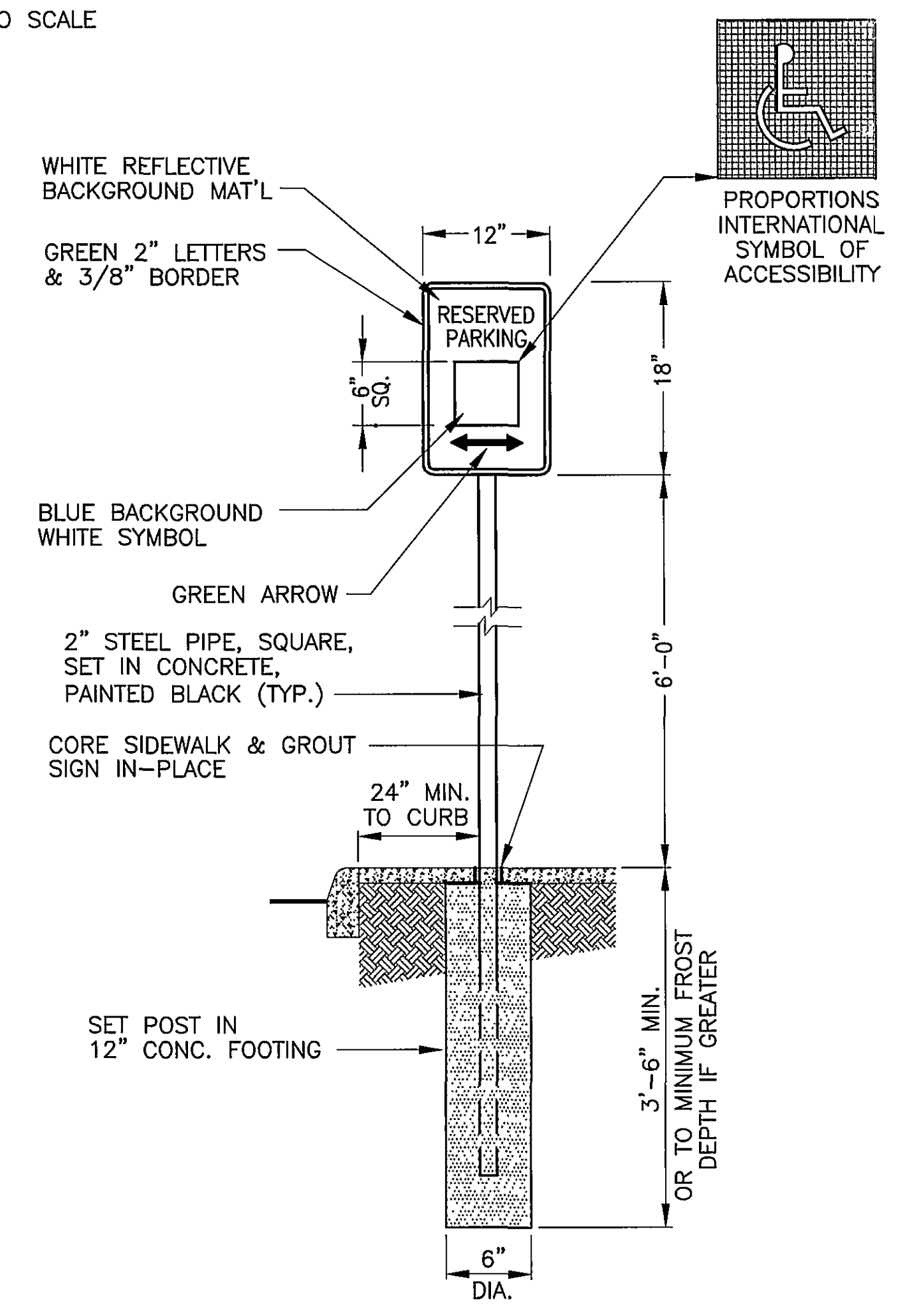


CONCRETE PAVEMENT SECTION

NO SCALE



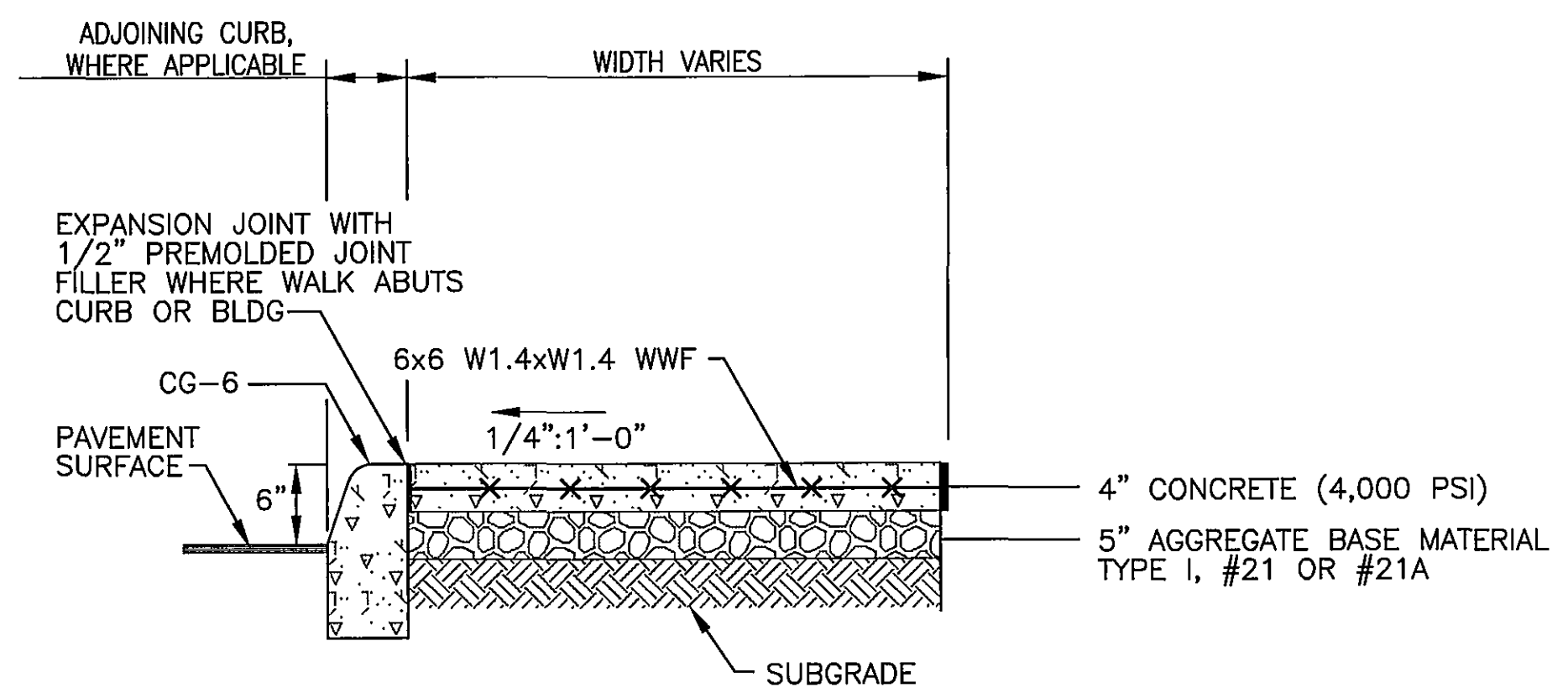
- GENERAL NOTES:
- Standard commercial "Entrance" shall have a minimum curb radius (R) of 7 1/2 feet.
 - Minimum Entrance width to be 12 feet.
 - Where curb & gutter already exists both curb & gutter shall be removed. If proposed entrance falls within five (5) feet of an existing joint removal & reconstruction shall be to that joint. Any concrete removed at other than an existing joint shall be cut with a mechanical saw specifically manufactured for that purpose; this also shall apply to street pavement.
 - Where sidewalk exists or is to be constructed across driveways the thickness thereof must correspond with the thickness of the entrance.
 - Whenever "Entrance" exceeds twenty-four (24) feet in width a 1/2" premolded expansion joint filler shall be installed through the center perpendicular to flow line.
 - Finish "Entrances" shall have a "course broom finish" running parallel to flow line.
 - Curing shall be accomplished by the use of a liquid membrane seal containing white pigment applied at the rate of one (1) gallon per 150 square feet.
 - All "Entrance Ways" shall be constructed according to City of Roanoke specifications and to line and grades approved by the City Engineering Department.
 - Entrances exceeding 30 feet in width shall be approved by the City Manager.



SIGN DETAIL

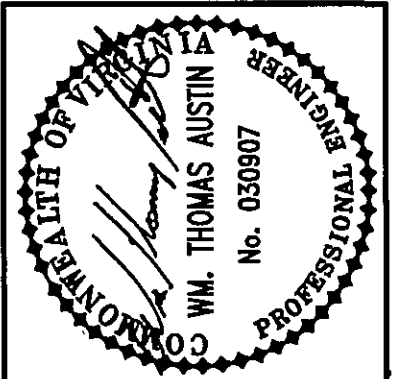
NO SCALE

NOTE: ALL SIGNS SHALL CONFORM TO M.U.T.C.D.



SIDEWALK SECTION

NO SCALE



Revisions	Date
1	SUBMISSION TO CITY 3/8/06
2	100% SUBMISSION 5/1/06
3	FINAL SUBMISSION TO CITY 6/22/06

Issue Date:	MARCH 8, 2006
Drawn By:	CZV
Designed By:	CZV
Checked By:	WTA
Date:	3/7/2006

Mattem & Craig
CONSULTING ENGINEERS • SURVEYORS

701 FIRST STREET, S.W.
ROANOKE, VIRGINIA 24016
(540) 345-6342
FAX (540) 345-7691

SITE DEVELOPMENT PLANS
RESIDENCE INN - WINSTON HOTELS

**SECTIONS AND DETAILS -
CONSTRUCTION**

CITY OF ROANOKE, VIRGINIA

Vertical Scale:
N/A

Horizontal Scale:
N/A

Commission Number:
2522

Sheet No.:
C-10

OFFICE OF THE CITY ENGINEER - ROANOKE, VIRGINIA

APPROVED: *[Signature]*
CITY ENGINEER

DATE: 12/18/03

STANDARD
CITY OF ROANOKE
COMMERCIAL ENTRANCE

SHEET
6 OF 9
TOTAL P. 02