

## UTILITY CONTACTS

**Streets & Storm Drainage:**  
Phil Schirmer, City Engineer  
City of Roanoke  
215 Church Avenue, S.W.  
Municipal South - Room 350  
Roanoke, Virginia 24011  
(540) 853-1292  
(540) 853-2731

**Electric:**  
Martin McChes  
American Electric Power  
P.O. Box 2021  
Roanoke, VA 24022-2121  
River Avenue Service Center  
802 River Avenue  
(540) 427-3664

**Cable Television:**  
Cox Communications  
P.O. Box 13726  
Roanoke, VA 24036  
(540) 776-3844 , Ext. 120  
Fax: (540) 776-8362

**Gas:**  
Donald S. Jones, P. E., Project Engineer  
Roanoke Gas Company  
P.O. Box 13007  
Roanoke, VA 24030  
(540) 983-3800  
(540) 777-3851  
Fax: (540) 777-3864

**Water and Sewer:**  
Western Virginia Water Authority  
2012 S. Jefferson Street  
Roanoke, VA 24014  
(540) 853-5700  
Fax: (540) 853-1600

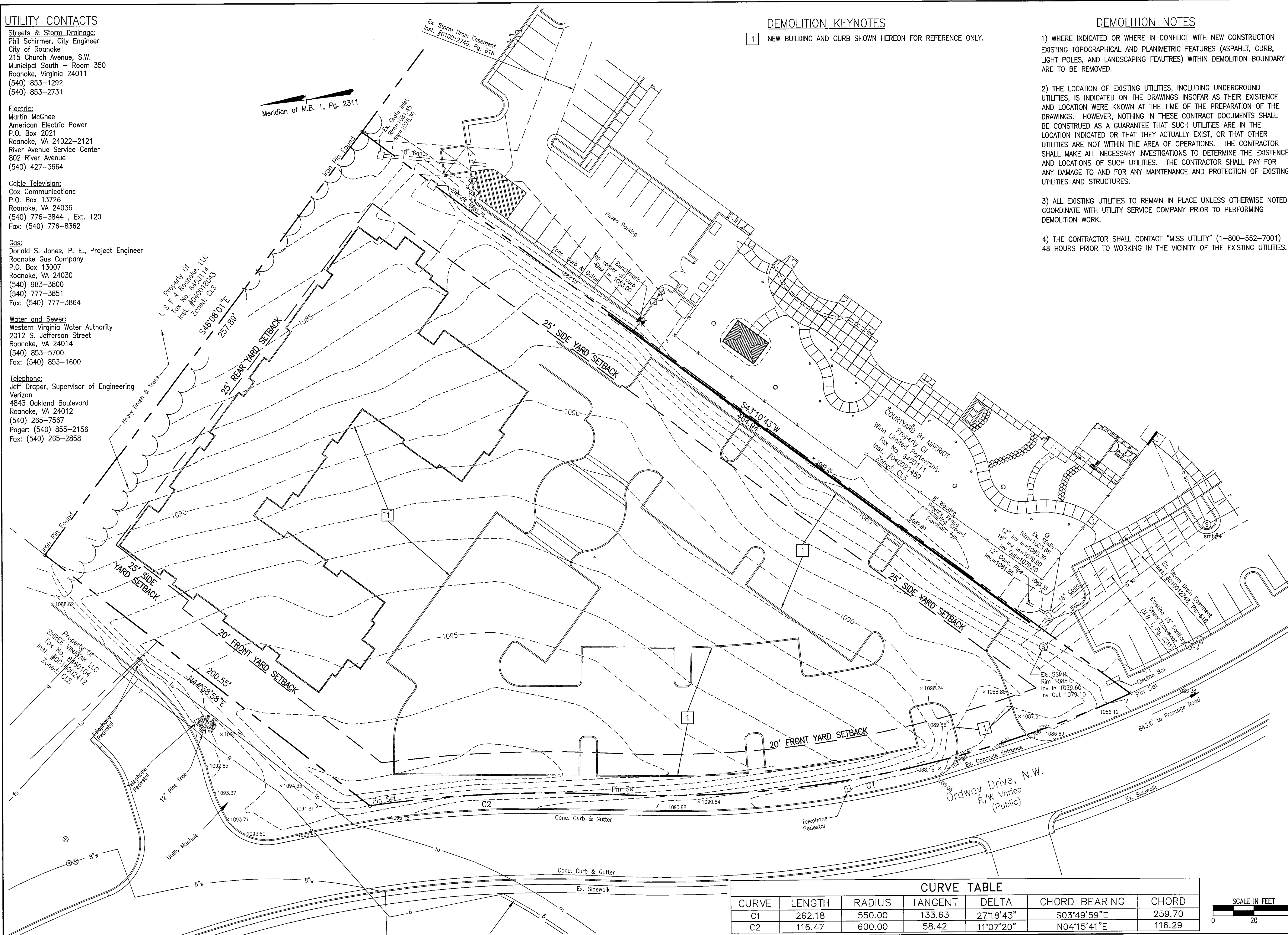
**Telephone:**  
Jeff Draper, Supervisor of Engineering  
Verizon  
4843 Oakland Boulevard  
Roanoke, VA 24012  
(540) 265-7567  
Pager: (540) 855-2156  
Fax: (540) 265-2858

## DEMOLITION KEYNOTES

- 1 NEW BUILDING AND CURB SHOWN HEREON FOR REFERENCE ONLY.

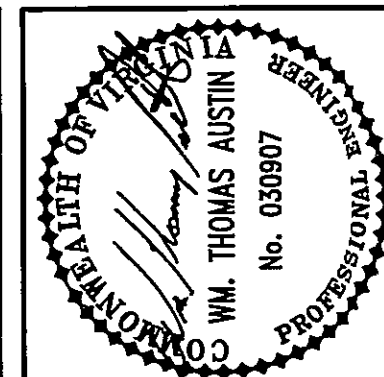
## DEMOLITION NOTES

- 1) WHERE INDICATED OR WHERE IN CONFLICT WITH NEW CONSTRUCTION EXISTING TOPOGRAPHICAL AND PLANIMETRIC FEATURES (ASPAHLT, CURB, LIGHT POLES, AND LANDSCAPING FEATUTRES) WITHIN DEMOLITION BOUNDARY ARE TO BE REMOVED.
- 2) THE LOCATION OF EXISTING UTILITIES, INCLUDING UNDERGROUND UTILITIES, IS INDICATED ON THE DRAWINGS INsofar AS THEIR EXISTENCE AND LOCATION WERE KNOWN AT THE TIME OF THE PREPARATION OF THE DRAWINGS. HOWEVER, NOTHING IN THESE CONTRACT DOCUMENTS SHALL BE CONSTRUED AS A GUARANTEE THAT SUCH UTILITIES ARE IN THE LOCATION INDICATED OR THAT THEY ACTUALLY EXIST, OR THAT OTHER UTILITIES ARE NOT WITHIN THE AREA OF OPERATIONS. THE CONTRACTOR SHALL MAKE ALL NECESSARY INVESTIGATIONS TO DETERMINE THE EXISTENCE AND LOCATIONS OF SUCH UTILITIES. THE CONTRACTOR SHALL PAY FOR ANY DAMAGE TO AND FOR ANY MAINTENANCE AND PROTECTION OF EXISTING UTILITIES AND STRUCTURES.
- 3) ALL EXISTING UTILITIES TO REMAIN IN PLACE UNLESS OTHERWISE NOTED. COORDINATE WITH UTILITY SERVICE COMPANY PRIOR TO PERFORMING DEMOLITION WORK.
- 4) THE CONTRACTOR SHALL CONTACT "MISS UTILITY" (1-800-552-7001) 48 HOURS PRIOR TO WORKING IN THE VICINITY OF THE EXISTING UTILITIES.



| CURVE TABLE |        |        |         |           |               |        |
|-------------|--------|--------|---------|-----------|---------------|--------|
| CURVE       | LENGTH | RADIUS | TANGENT | DELTA     | CHORD BEARING | CHORD  |
| C1          | 262.18 | 550.00 | 133.63  | 27°18'43" | S03°49'59"E   | 259.70 |
| C2          | 116.47 | 600.00 | 58.42   | 11°07'20" | N04°15'41"E   | 116.29 |

SCALE IN FEET  
0 20 40



| Revisions                  | Date    |
|----------------------------|---------|
| 1 SUBMISSION TO CITY       | 3/9/06  |
| 2 100% SUBMISSION          | 5/1/06  |
| 3 FINAL SUBMISSION TO CITY | 6/22/06 |

|              |               |
|--------------|---------------|
| Issue Date:  | MARCH 8, 2006 |
| Drawn By:    | CZV           |
| Designed By: | CZV           |
| Checked By:  | WTA           |
| Date:        | 3/7/2006      |

**Mattern & Craig**  
CONSULTING ENGINEERS • SURVEYORS  
701 FIRST STREET, S.W.  
ROANOKE, VIRGINIA 24016  
(540) 445-5042  
FAX (540) 346-7681

SITE DEVELOPMENT PLANS  
RESIDENCE INN - WINSTON HOTELS  
**EXISTING CONDITIONS**  
CITY OF ROANOKE, VIRGINIA

|                    |          |
|--------------------|----------|
| Vertical Scale:    | N/A      |
| Horizontal Scale:  | 1" = 20' |
| Commission Number: | 2522     |

Sheet No.:  
**C-3**