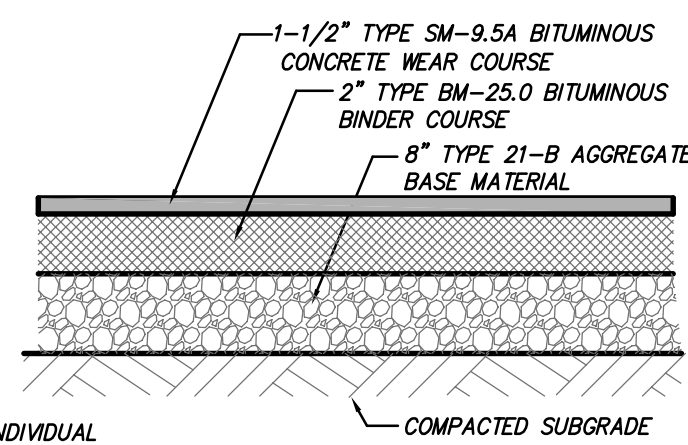
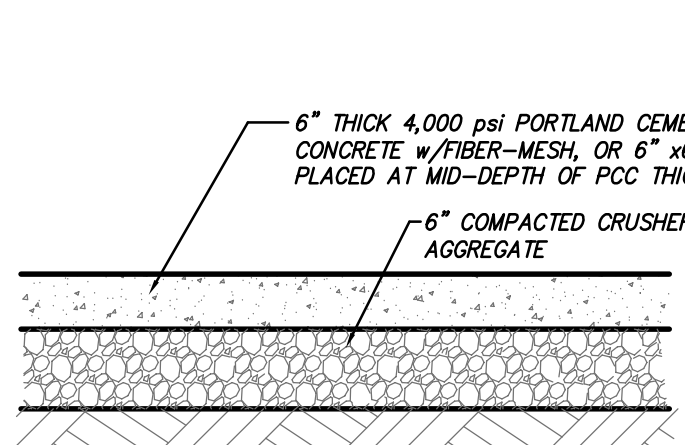


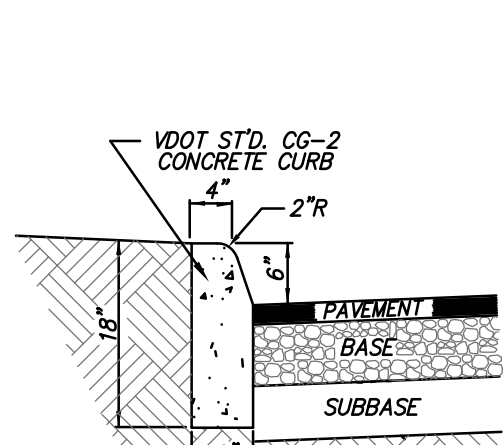
A STANDARD-DUTY BITUMINOUS PAVEMENT
C8.1 NO SCALE



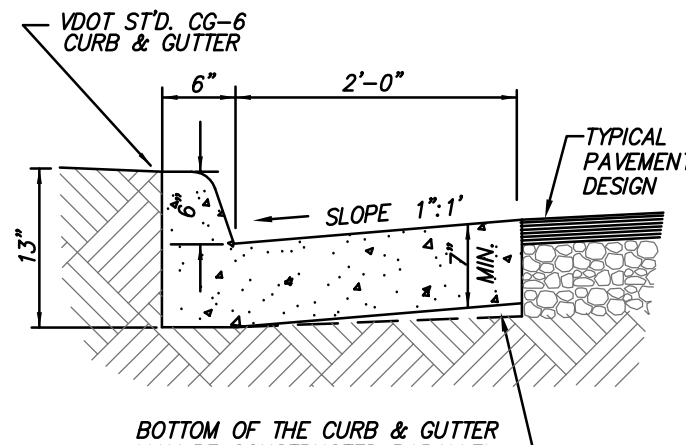
B HEAVY-DUTY BITUMINOUS PAVEMENT
C8.1 NO SCALE



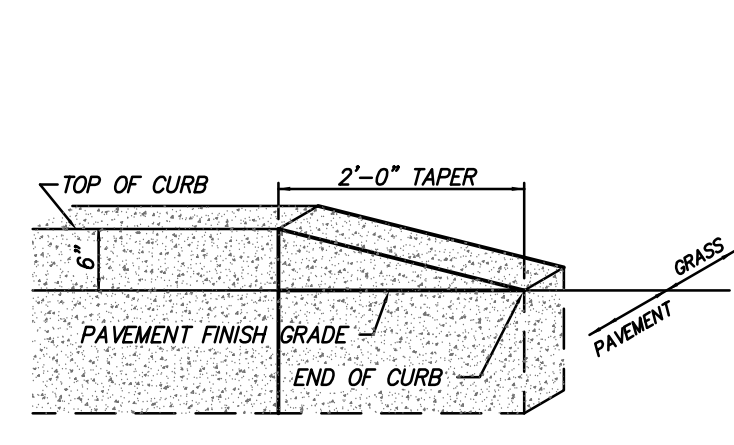
C PORTLAND CEMENT CONCRETE PAVEMENT
C8.1 NO SCALE



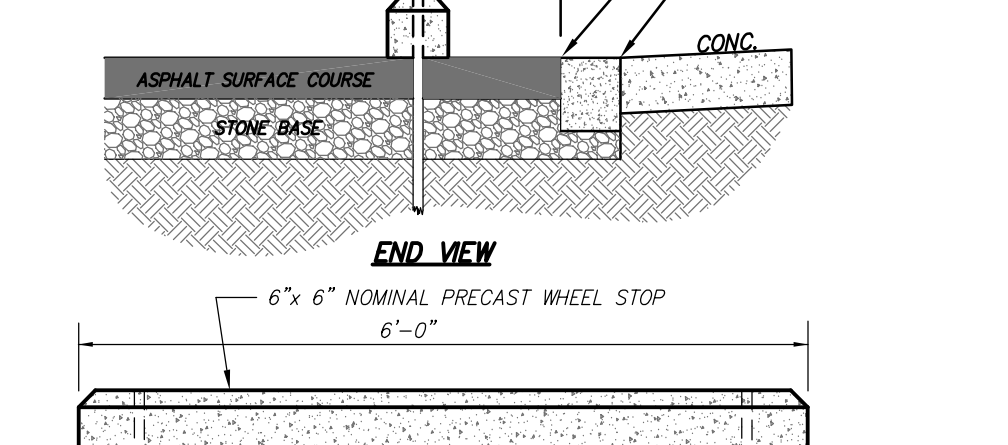
D CONCRETE CURBING
C8.1 NO SCALE



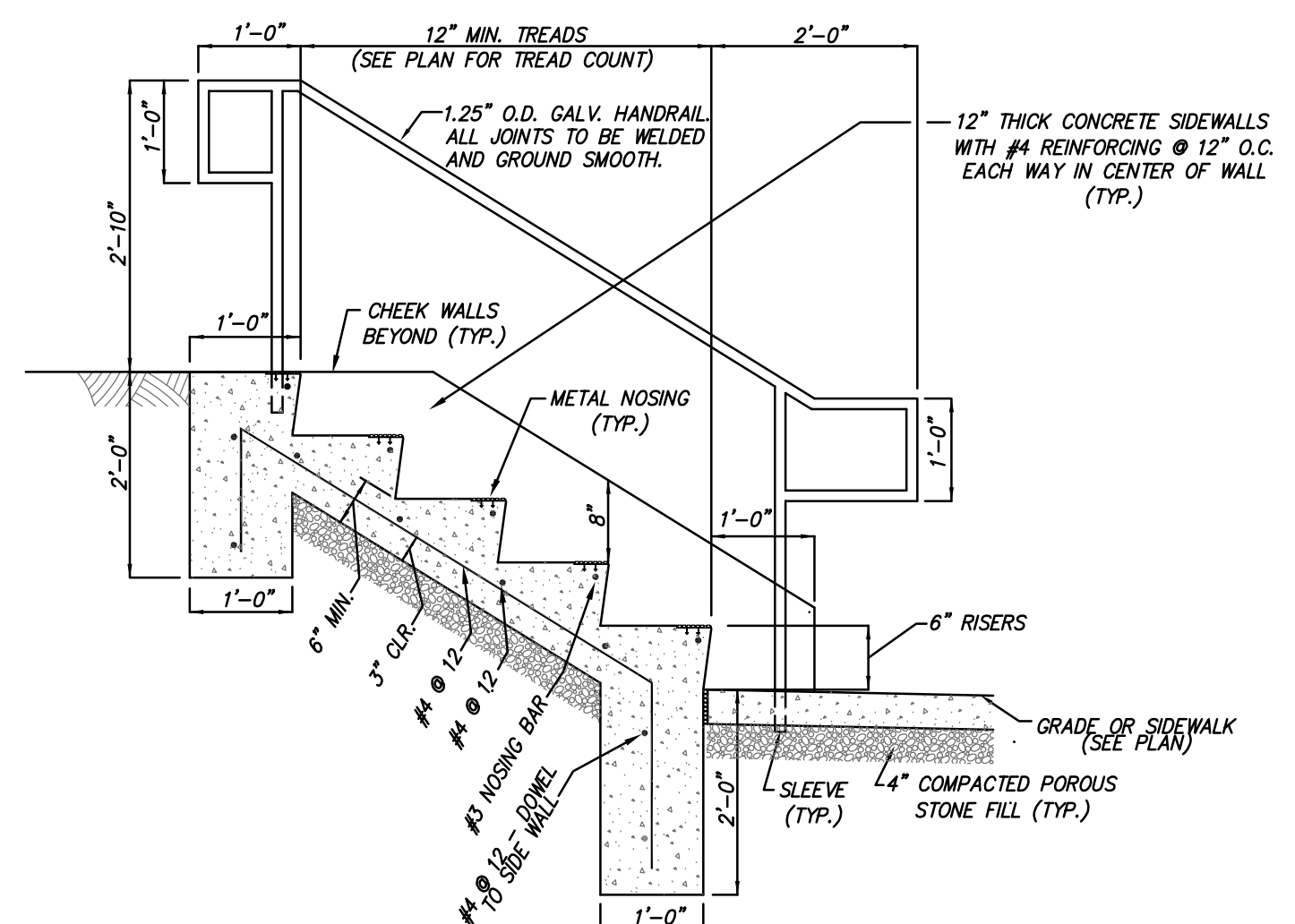
E CONCRETE CURB & GUTTER
C8.1 NO SCALE



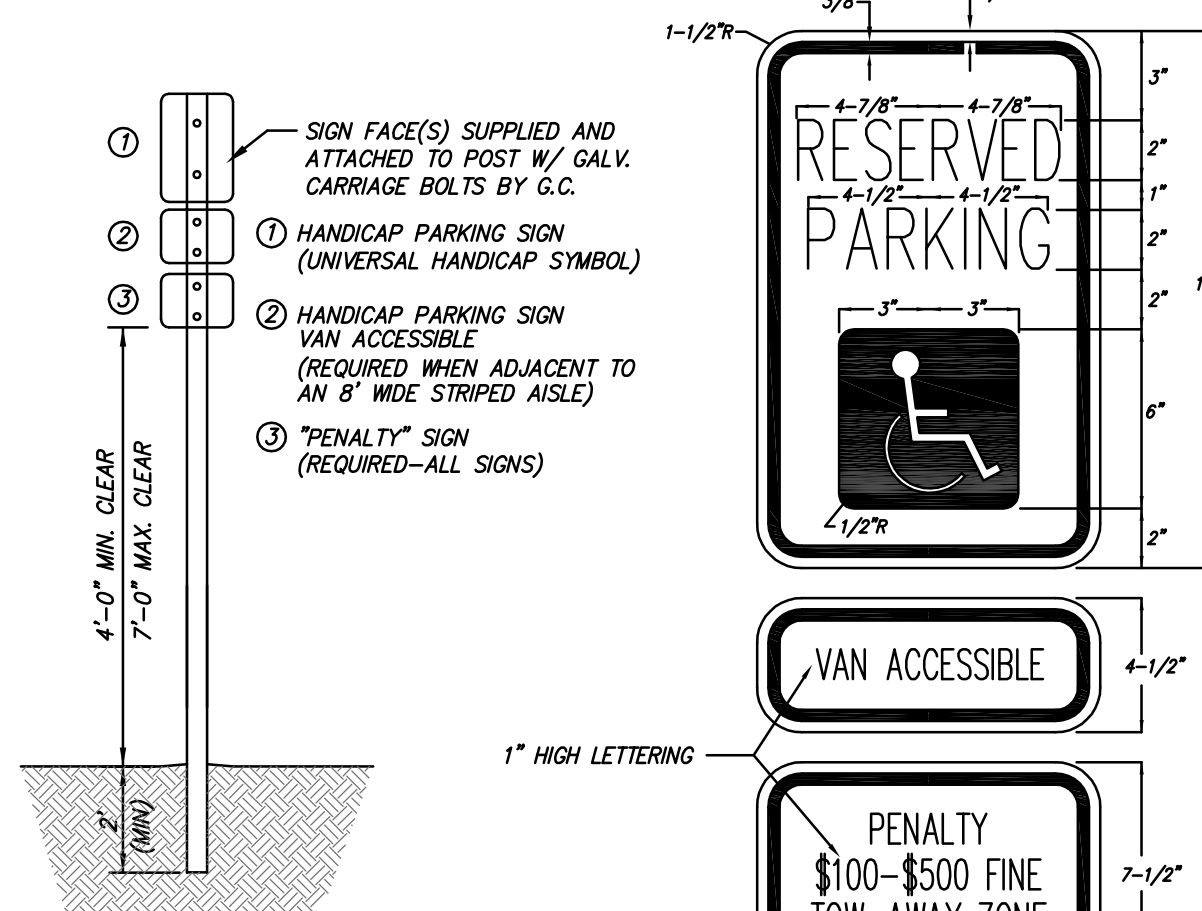
F CURB TAPER
C8.1 NO SCALE



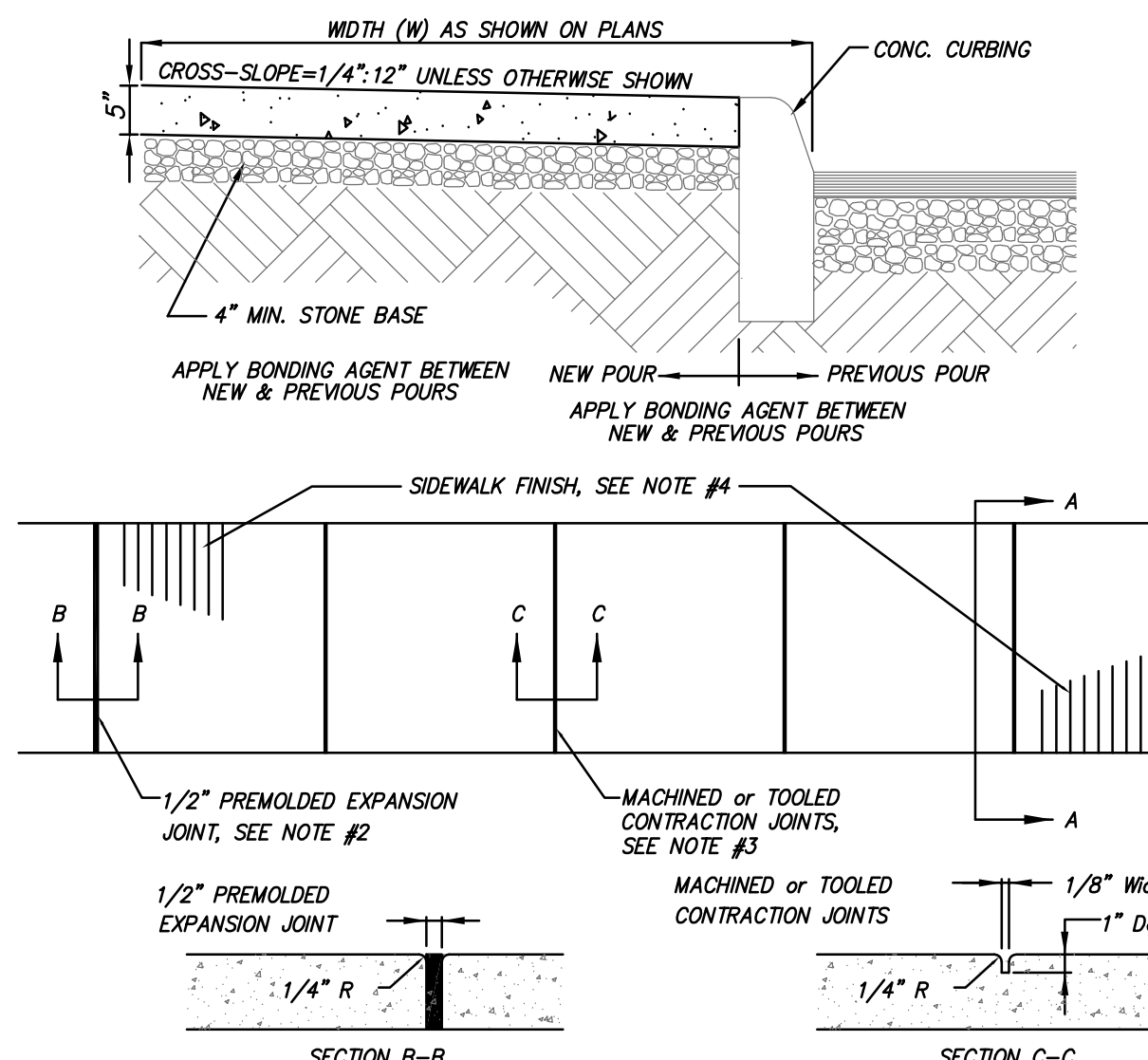
G PRECAST CONCRETE WHEEL STOP
C8.1 NO SCALE



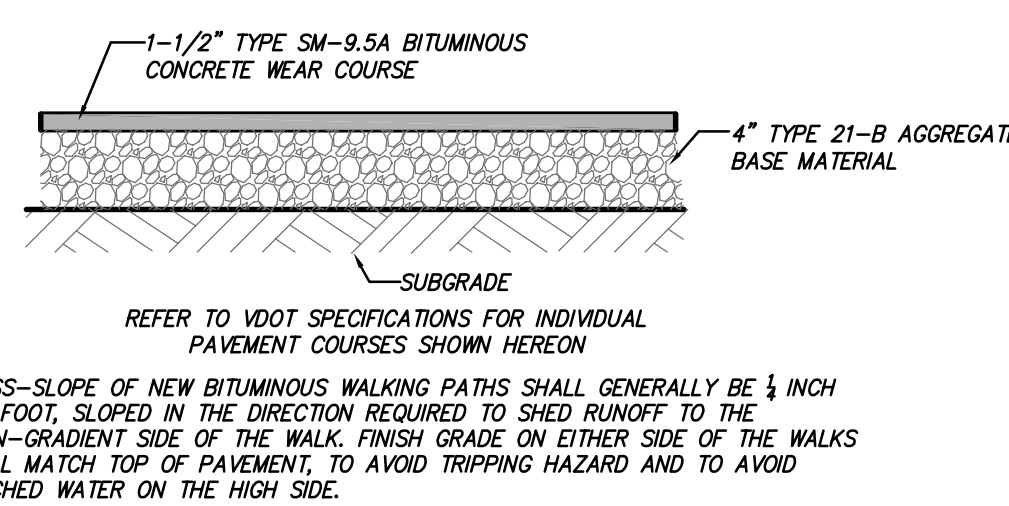
H EXTERIOR STEPS AND HANDRAIL
C8.1 NO SCALE



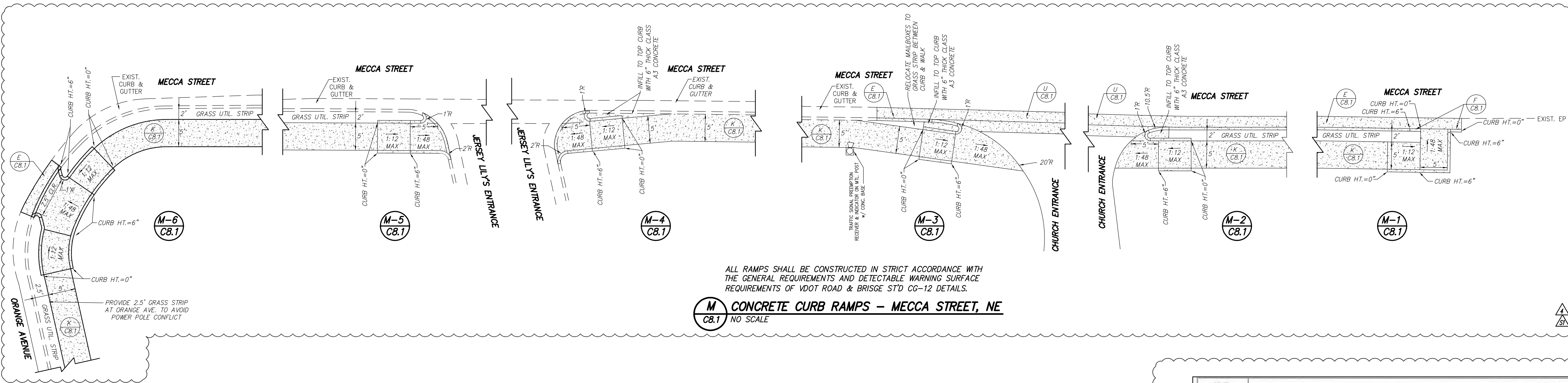
J POST-MOUNTED SIGN
C8.1 NO SCALE



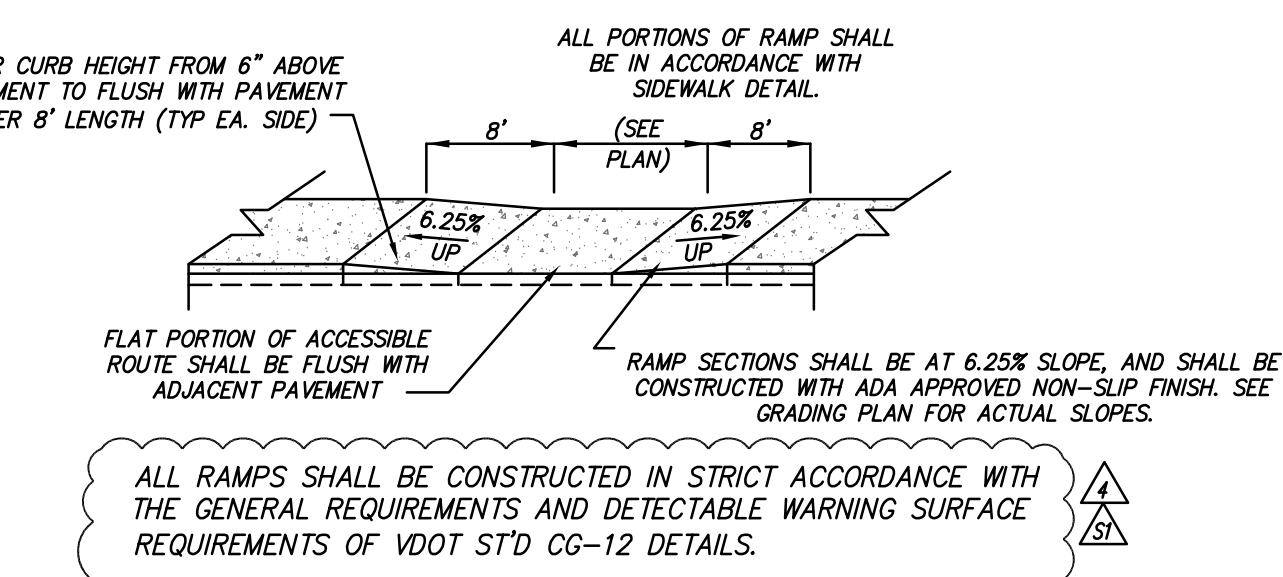
K CONCRETE SIDEWALK
C8.1 NO SCALE



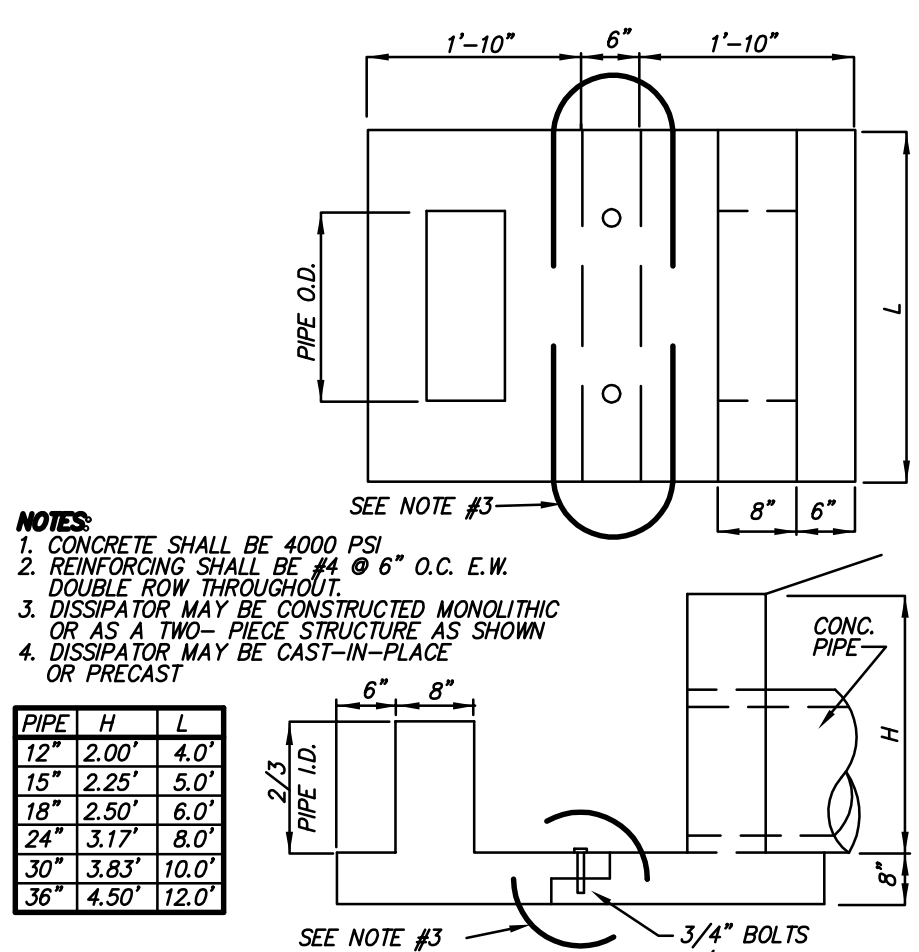
L BITUMINOUS WALKING PATH PAVEMENT
C8.1 NO SCALE



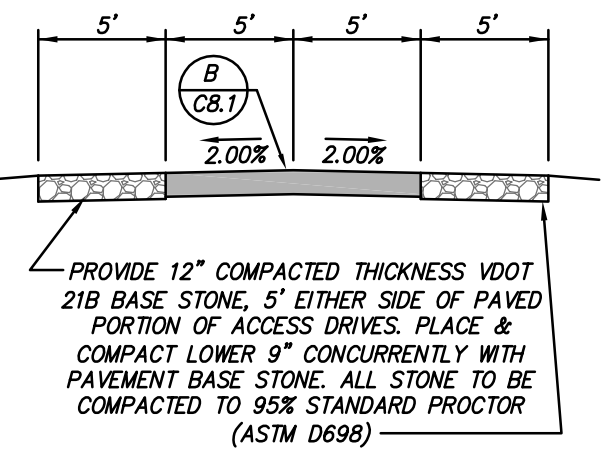
M CONCRETE CURB RAMPS - MECCA STREET, NE
C8.1 NO SCALE



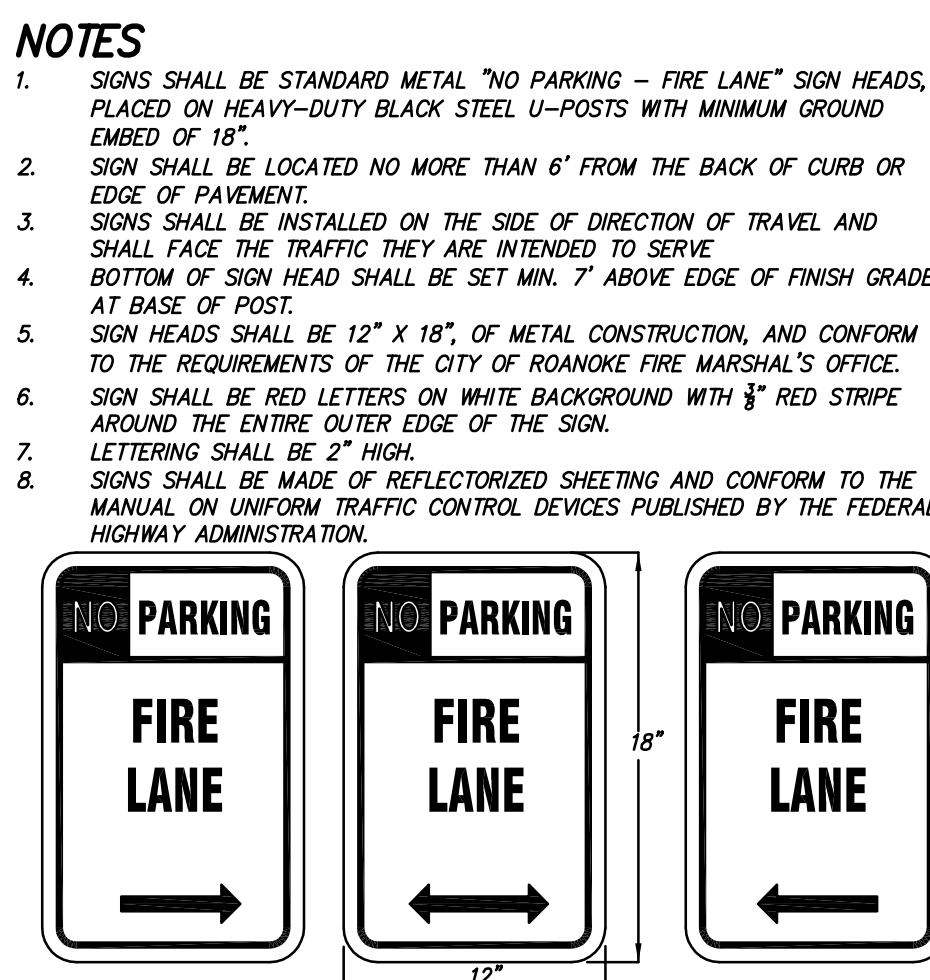
N CONCRETE CURB RAMP
C8.1 NO SCALE



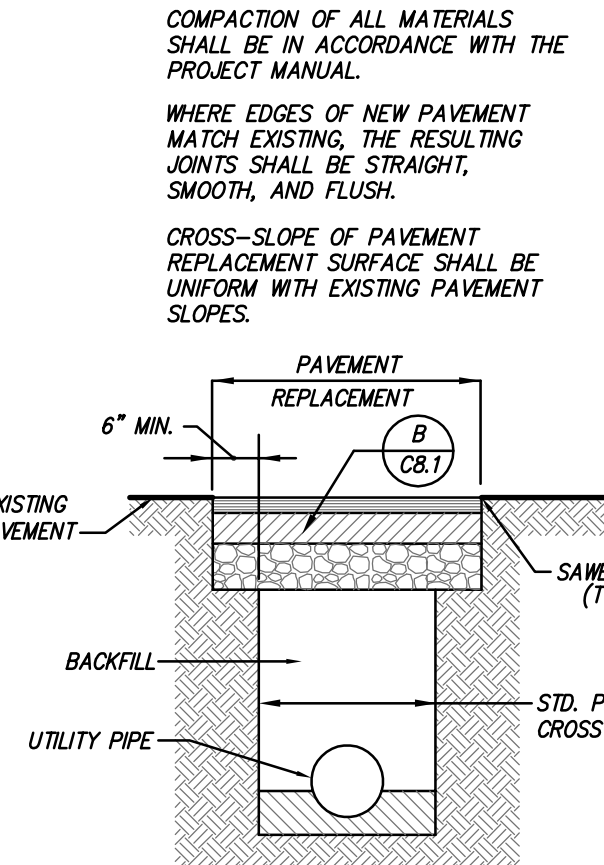
P PIPE ENERGY DISSIPATOR
C8.1 NO SCALE



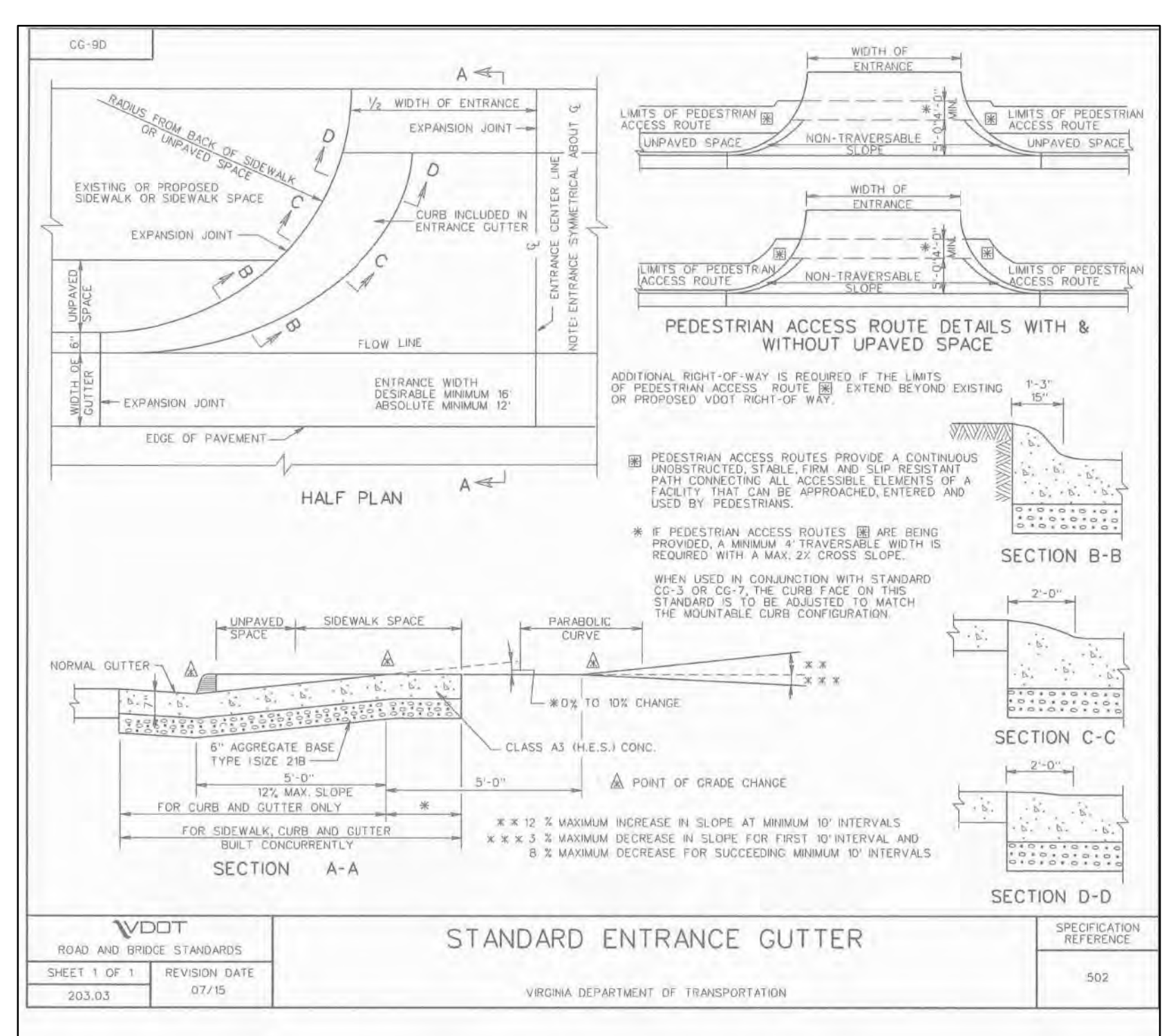
Q SECTION-EMERGENCY ACCESS DRIVE
C8.1 NO SCALE



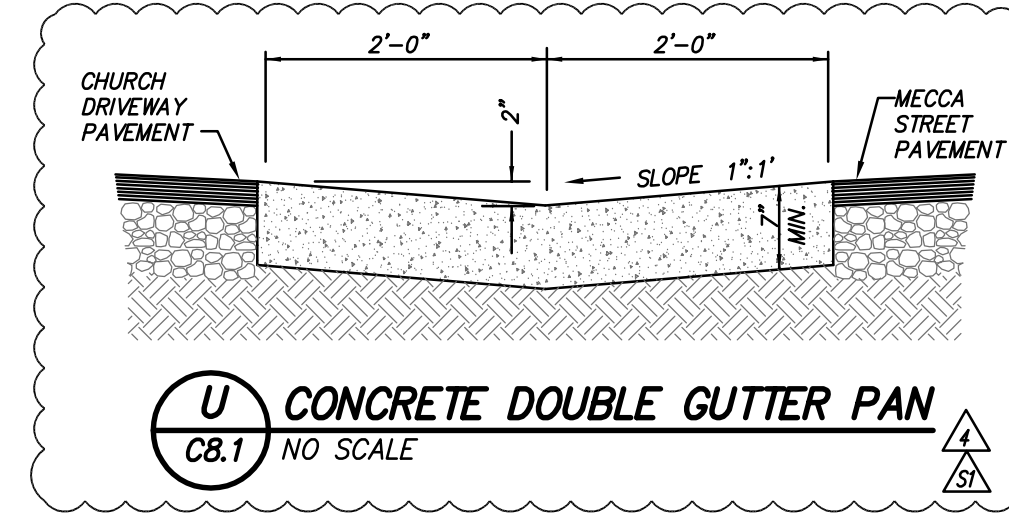
R FIRE LANE SIGNAGE
C8.1 NO SCALE



S MECCA STREET PAVEMENT REPLACEMENT
C8.1 NO SCALE



T VDOT STANDARD CG-9D CONCRETE ENTRANCE
C8.1 NO SCALE



U CONCRETE DOUBLE GUTTER PAN
C8.1 NO SCALE

POPE ARCHITECTS
POPE ARCHITECTS, INC.
1295 BANDANA BLVD N, SUITE 200
ST. PAUL, MN
55108-2735
(651) 642-9200 | FAX (651) 642-1101
www.popearch.com

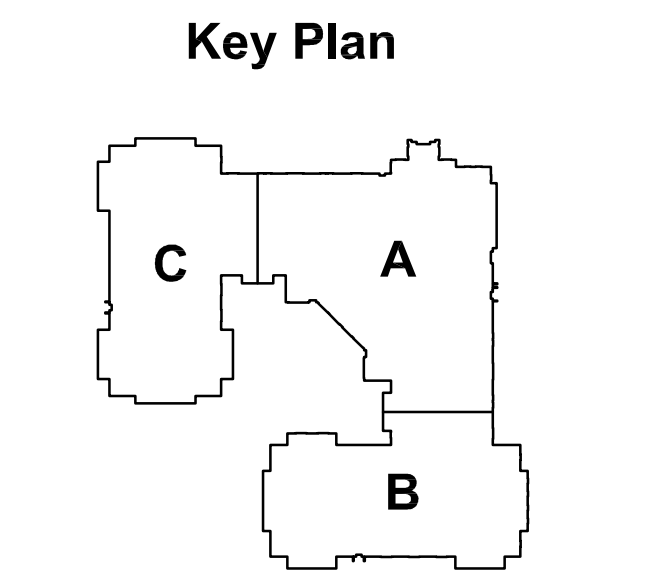
RICHFIELD LIVING
AT THE ROANOKE CAMPUS
Roanoke, Virginia

RICHFIELD

CWA
CALDWELL WHITE ASSOCIATES
ENGINEERS / SURVEYORS / PLANNERS
1000 N. 10TH ST., SUITE 200
ROANOKE, VA 24011-0800
(540) 398-3400
FAX: (540) 398-0700

Scale: As Shown
W.D. 19-0034

Designed: C.L. White
Drawn: C.L. White



DETAILS - SITE CONSTRUCTION

| Issues and Revisions: | DESIGN DEVELOPMENT ISSUE |
|-----------------------|--|
| 04/19/2019 | DESIGN DEVELOPMENT ISSUE |
| 06/06/2019 | PERMIT SET |
| 07/17/2019 | PER 1ST CITY SITE REVIEW |
| 07/31/2019 | ADDENDUM 4 / 100% CD SET (see revisions same as Delta S1 dated 07/17/2019) |

COMMONWEALTH OF VIRGINIA
CORBIN L. WHITE
License No. 23843
07-31-19
PROFESSIONAL ENGINEER

Commission No.: 63132-18180
Drawn by: _____
Checked by: _____

SHEET

C8.1