

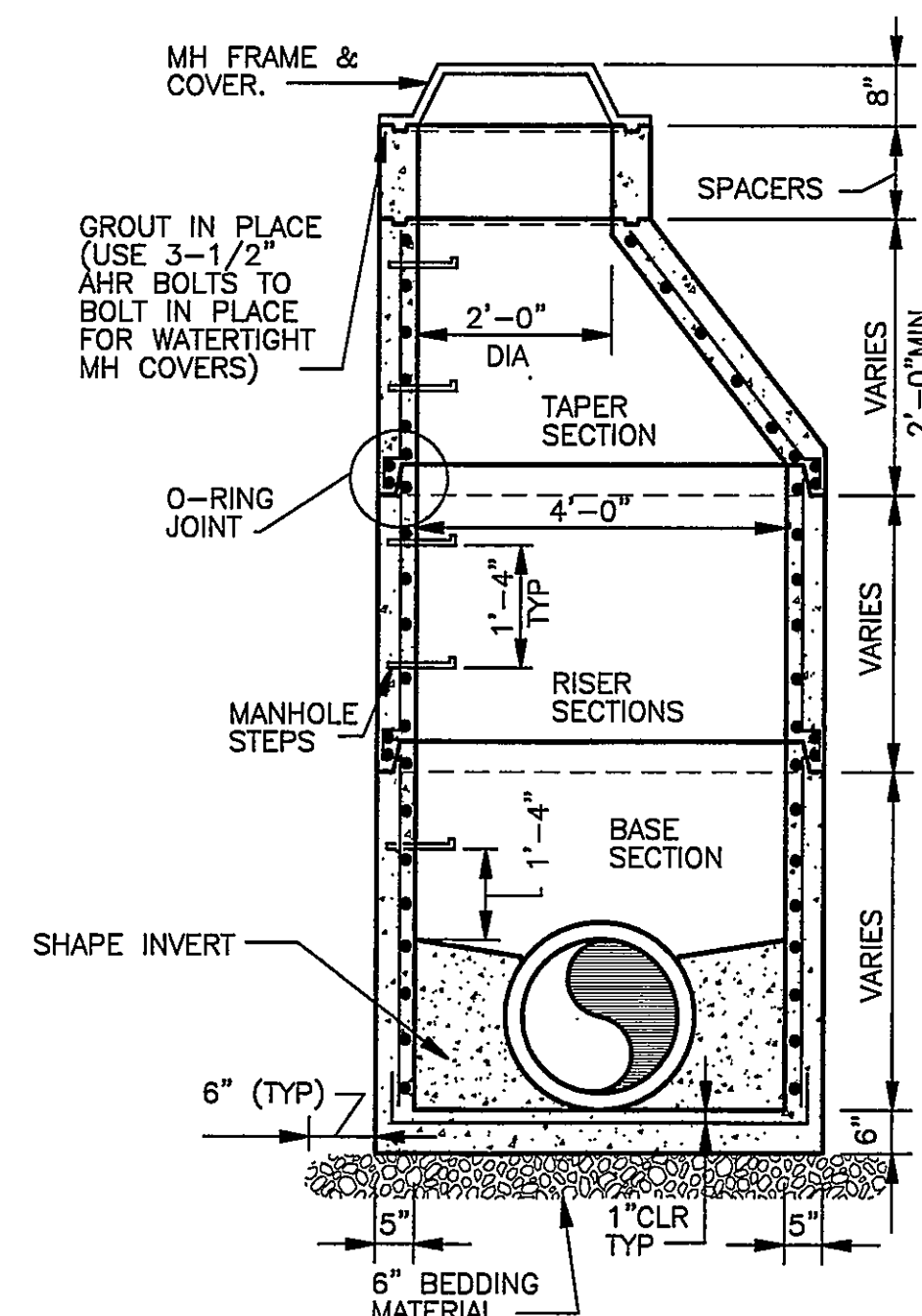
REV	DATE	DESCRIPTION	APP

COMM NO: 40049  
ISSUE DATE: SEPTEMBER 16, 2005  
DESIGNED BY: TJG DRAWN BY: TJG  
CHECKED BY: MLC SUBMITTED BY: GLH  
© HAYES, SEAY, MATTERN & MATTERN, INC., 2005. ALL RIGHTS RESERVED.

CIVIL

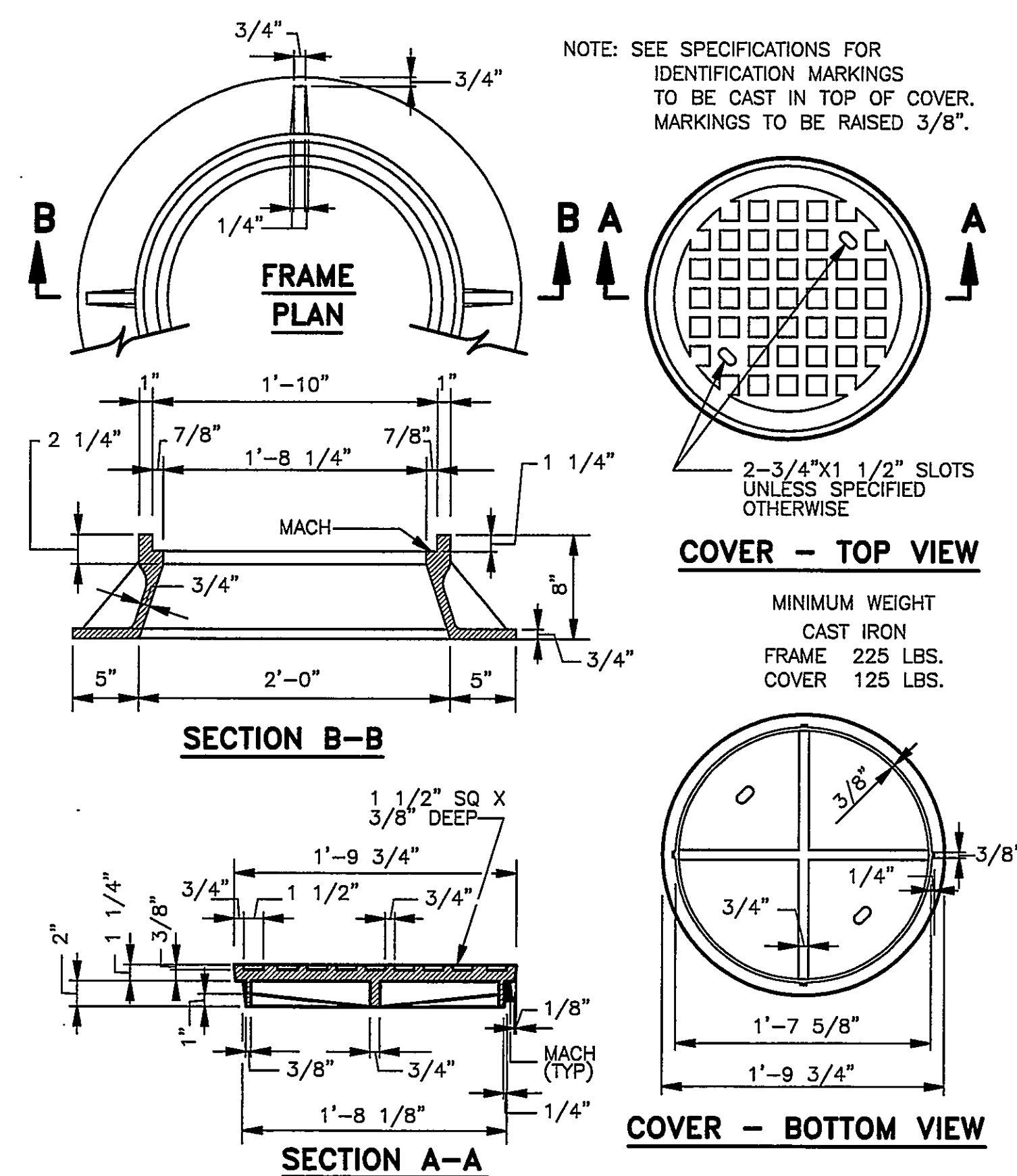
DETAILS

## C501

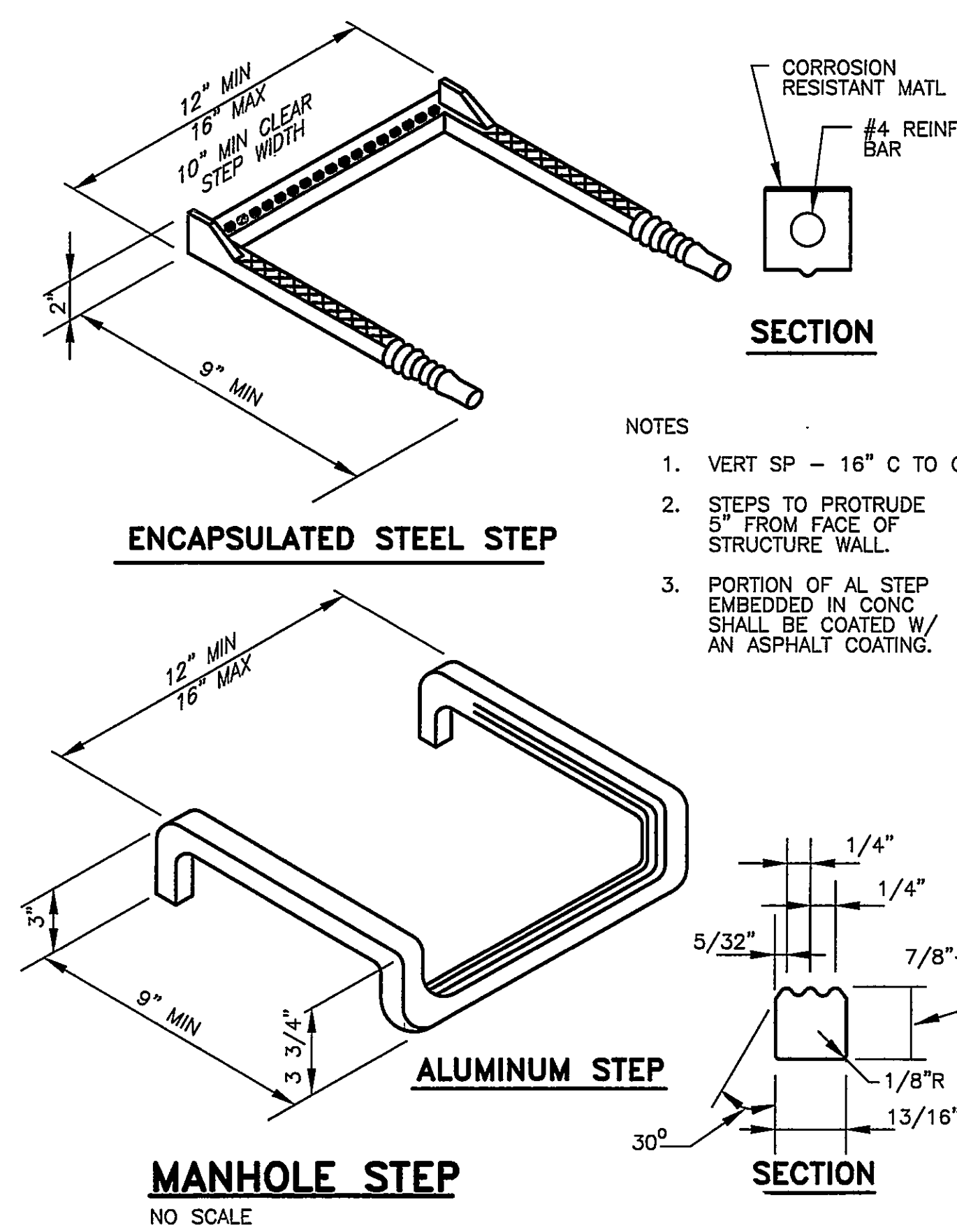


NOTE:  
FOR 60", 84", AND 96" DIAMETER MANHOLES, USE  
VDOT STANDARD PRECAST BASE UNITS, REDUCER  
UNITS, AND TOP UNITS.

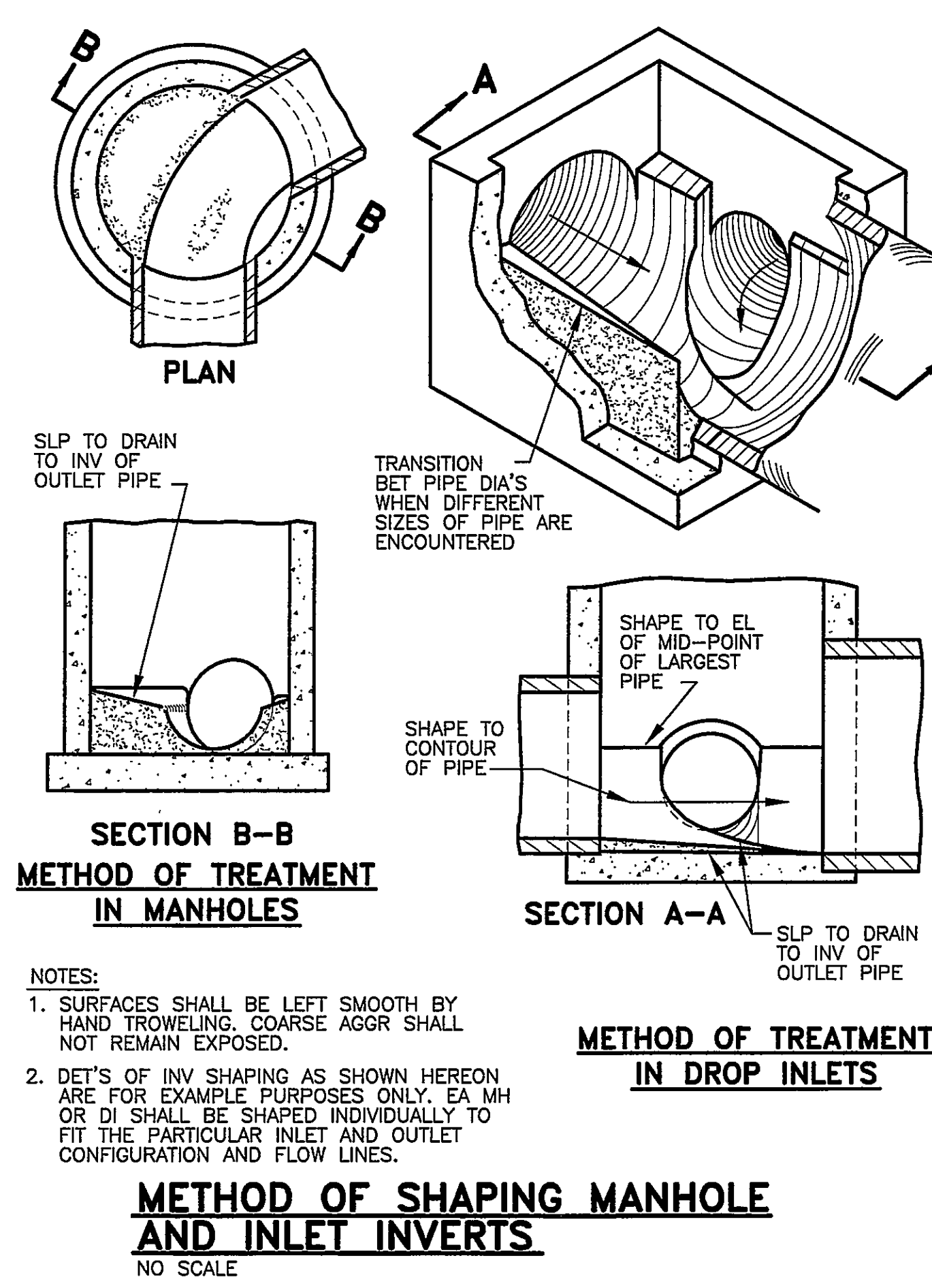
**PRECAST MANHOLE - 48" ID**  
NO SCALE



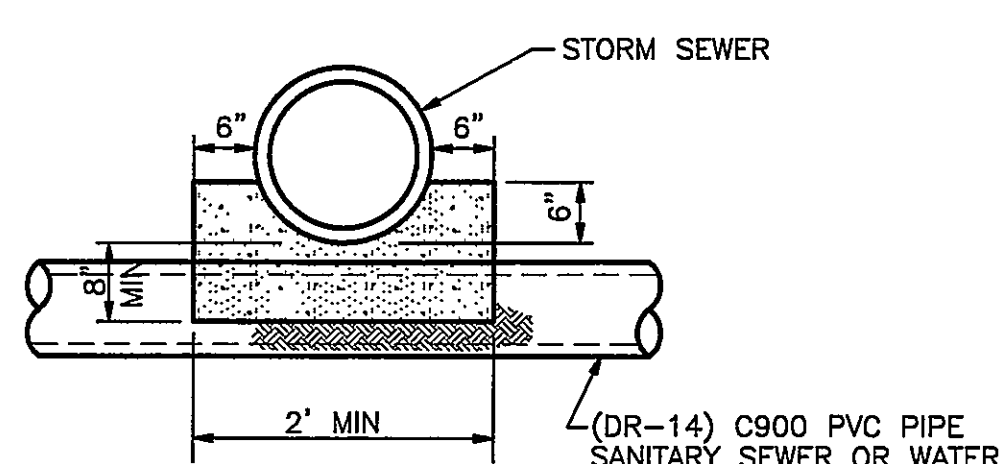
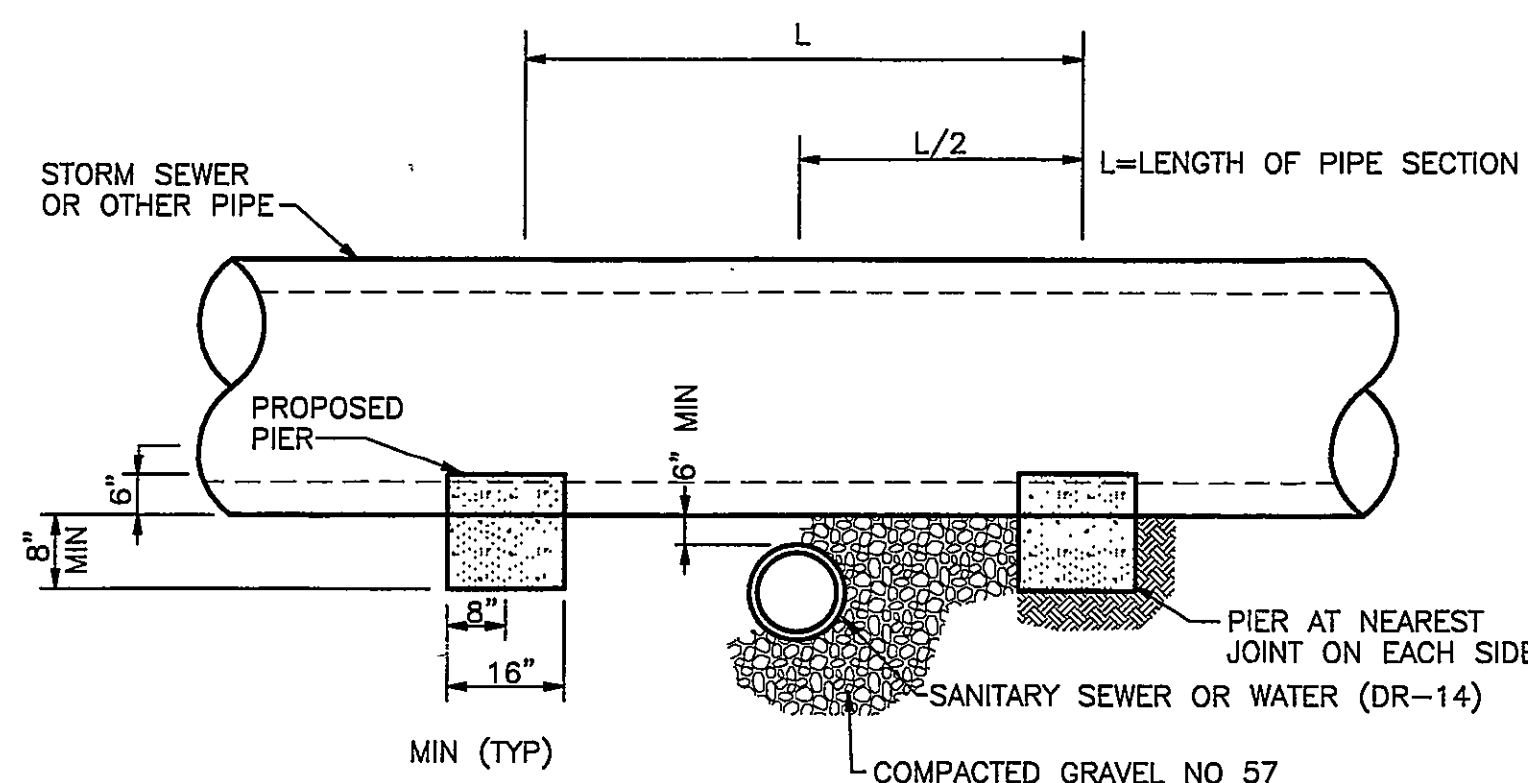
**STANDARD MANHOLE FRAME & COVER**  
NO SCALE



**MANHOLE STEP**  
NO SCALE

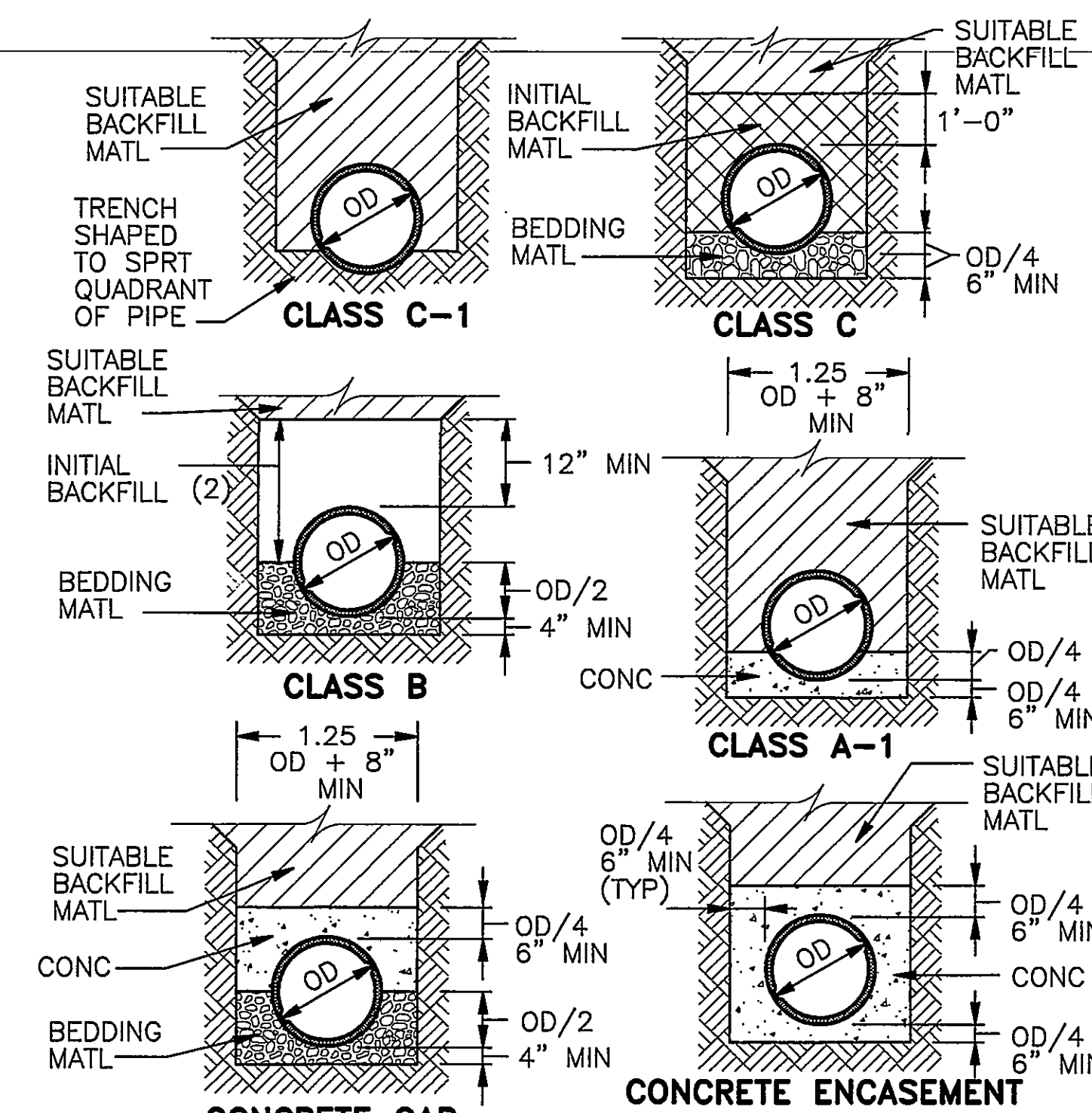


**METHOD OF SHAPING MANHOLE AND INLET INVERTS**  
NO SCALE



NOTE:  
1. PIER REQUIRED WHEN STORM DRAIN OR OTHER PIPES  
CROSSES OVER THE OTHER UTILITY WITH A VERTICAL  
CLEARANCE OF LESS THAN 18".  
2. PIER TO BE BUILT ON UNDISTURBED EARTH.  
3. CONCRETE TO BE READY MIX CLASS A3.

**CONCRETE PIERS**  
NO SCALE

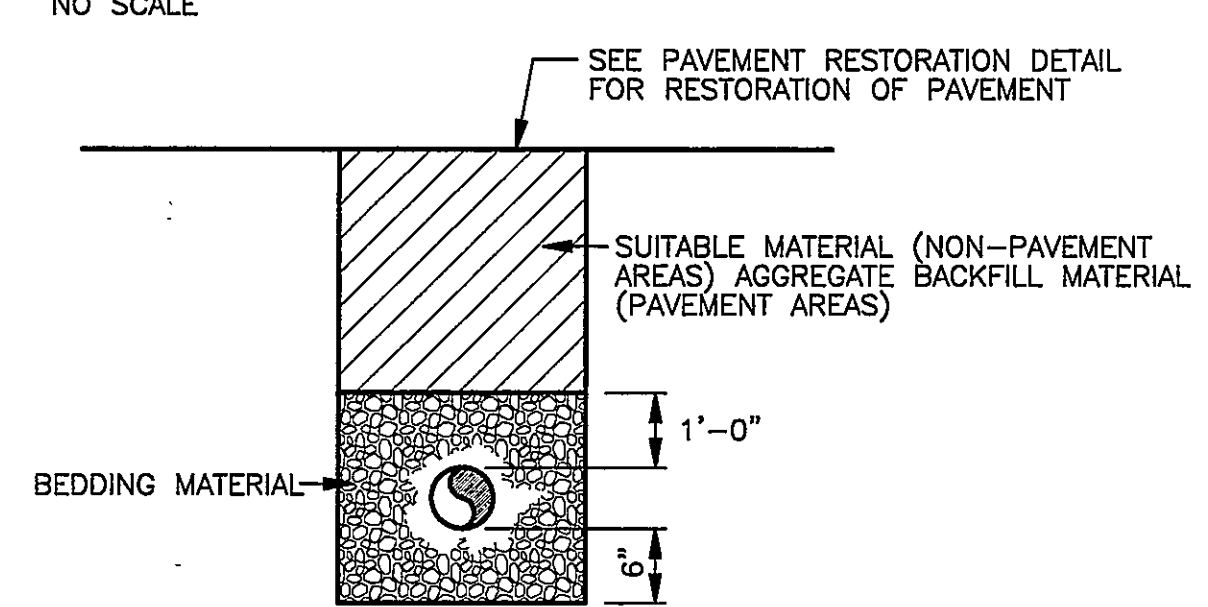


(1) WIDTHS SHOWN ARE MAX TRENCH WIDTH FROM 12" ABOVE TOP OF PIPE TO BOT OF TRENCH. TRENCH WIDTHS SHALL ALSO CONFORM W/ THE MIN WIDTHS INDICATED.

(2) MATERIAL FOR INITIAL BACKFILL SHALL BE AS SPECIFIED.

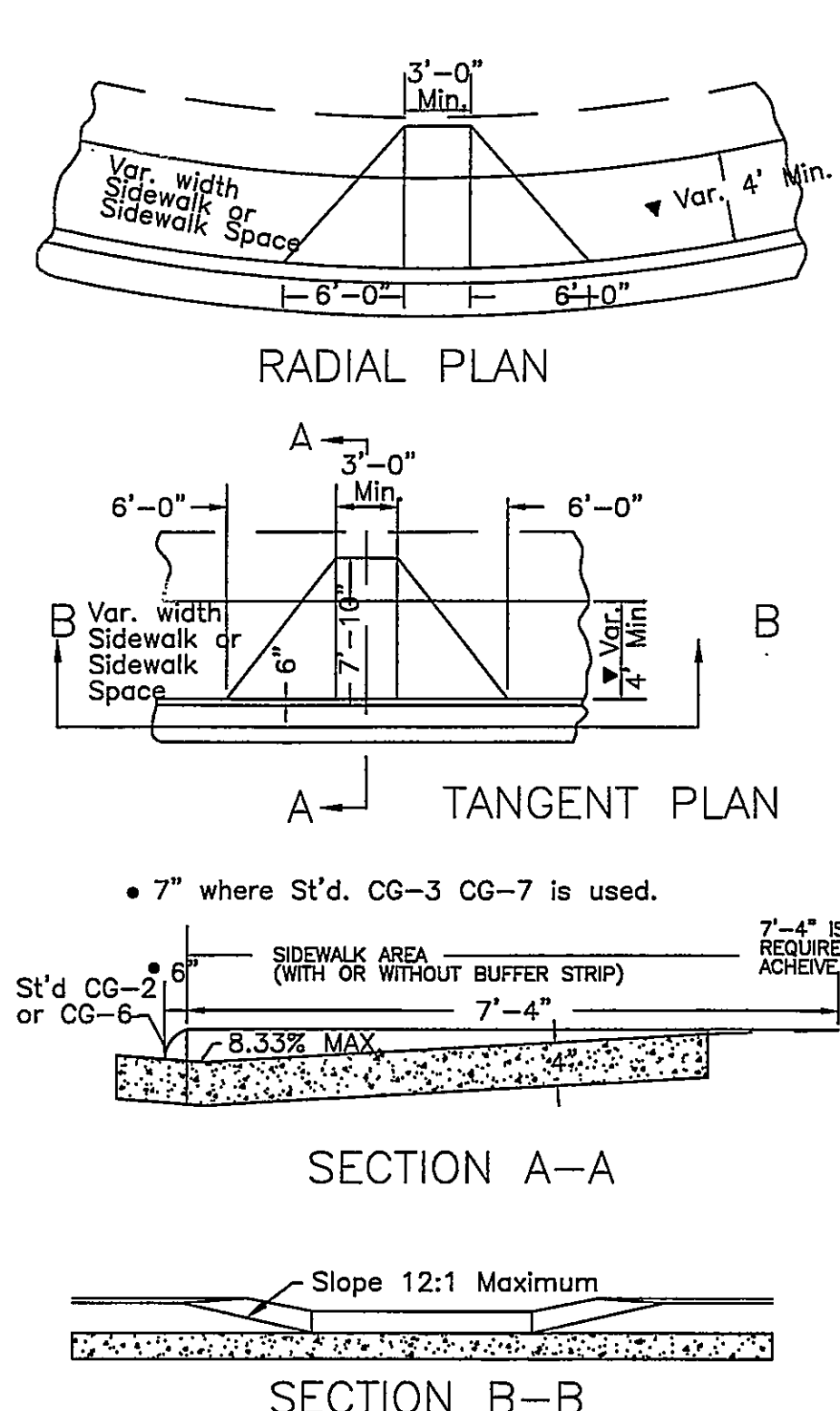
NOMINAL PIPE DIA	TRENCH WIDTH (1)
4" & 6"	2'-0"
8" THRU 12"	2'-8"
15" THRU 21"	PIPE OD + 20"
24" THRU 30"	PIPE OD + 24"
33" THRU 42"	PIPE OD + 30"
48" & LARGER	PIPE OD + 36"

**PIPE TRENCH**  
NO SCALE

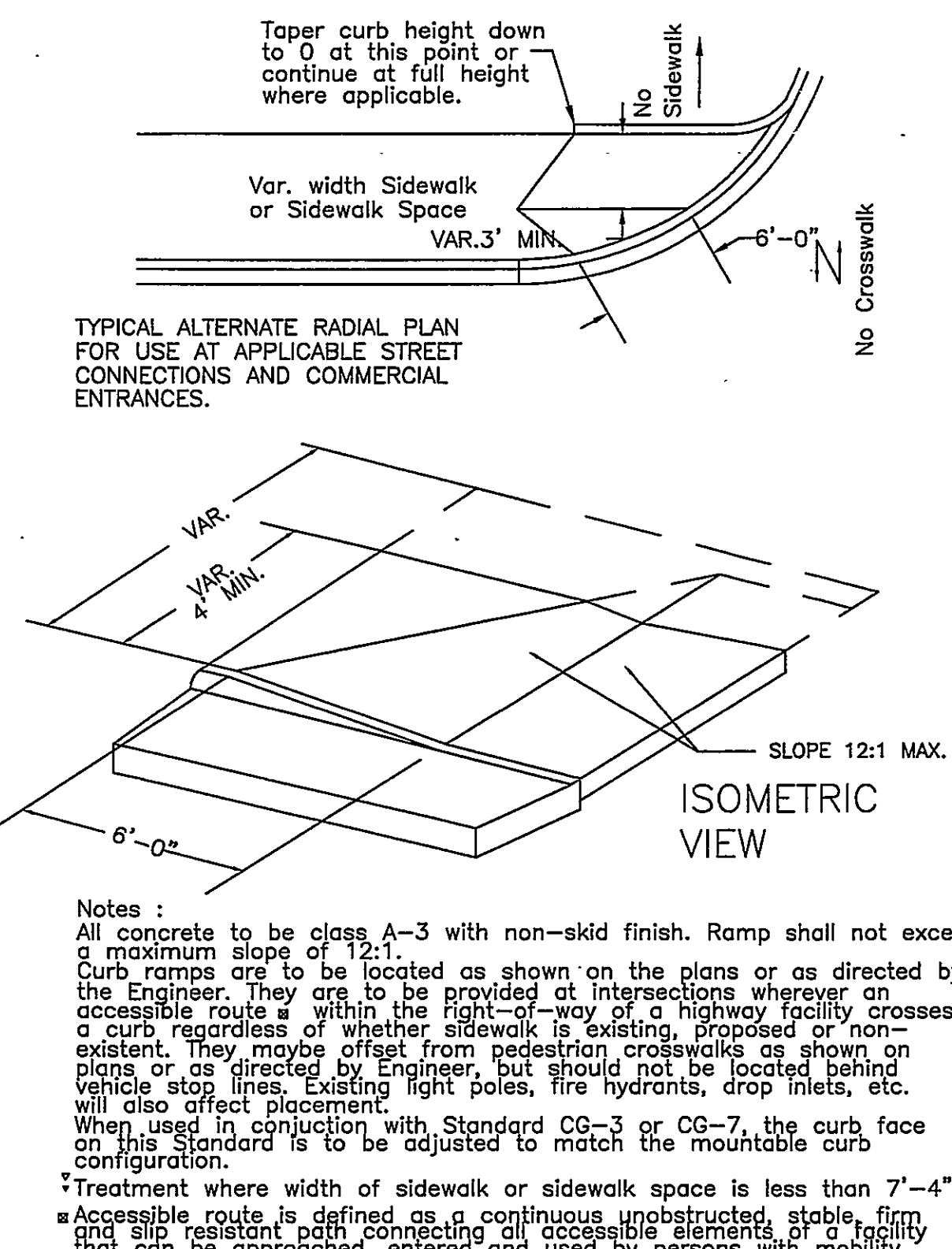


NOTES:  
1. MAXIMUM AND MINIMUM TRENCH WIDTHS ARE 2'-0"-1'-2" FOR 4" Ø PIPE AND 2'-8"-1'-6" FOR 8" Ø PIPE, MEASURED 1 FOOT ABOVE THE TOP OF THE PIPE.

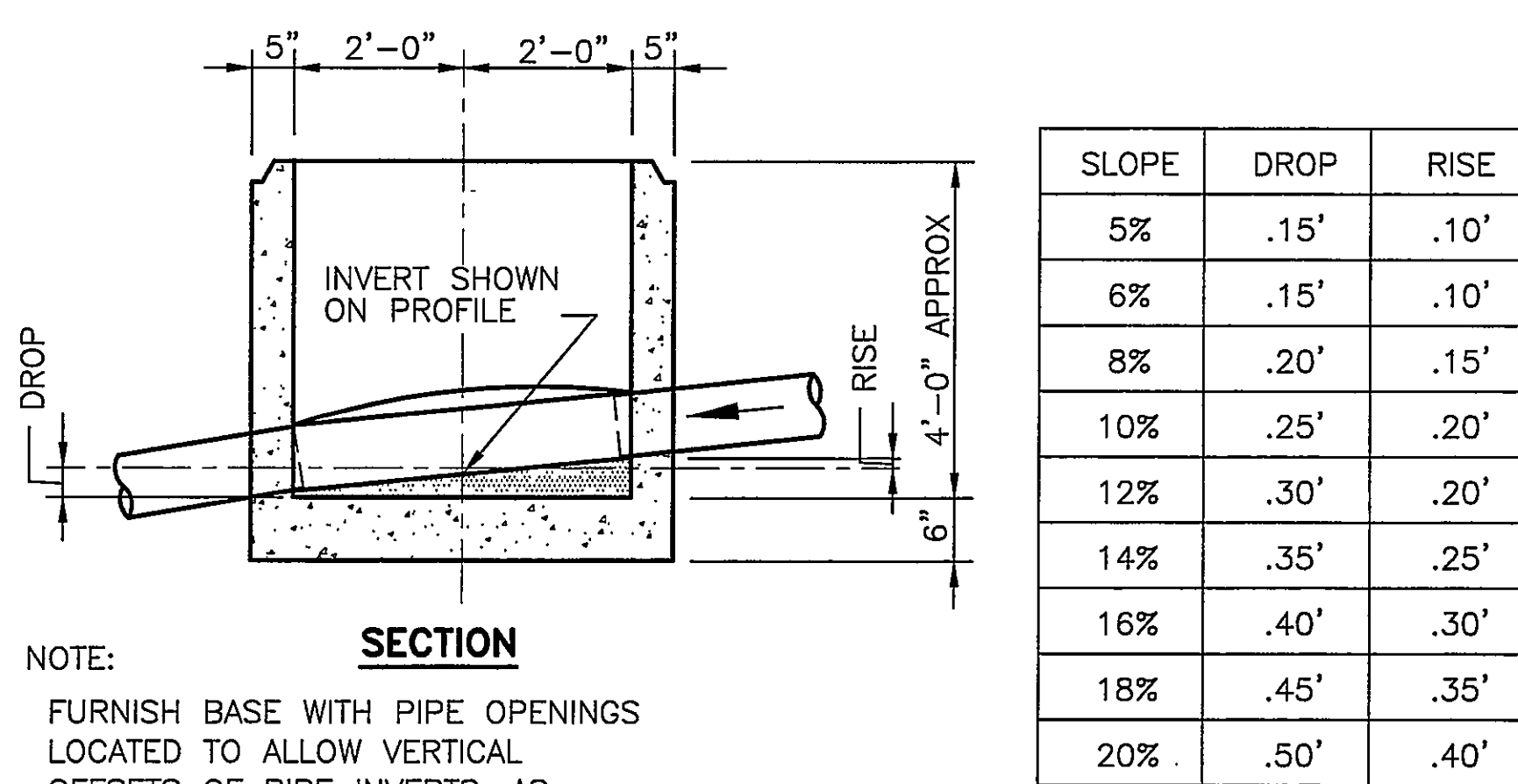
**TRENCH DETAIL (PVC DETAIL)**  
NO SCALE



**CURB RAMP (PERSONS WITH MOBILITY IMPAIRMENTS)**  
NO SCALE



**DOGHOUSE MANHOLE**  
NO SCALE



**PRECAST BASE UNIT-INSTALLATION**  
NO SCALE

NOTE:  
FURNISH BASE WITH PIPE OPENINGS LOCATED TO ALLOW VERTICAL OFFSETS OF PIPE INVERTS, AS SHOWN, WHENEVER PIPE SLOPES ARE 5% OR GREATER.

SLOPE	DROP	RISE
5%	.15'	.10'
6%	.15'	.10'
8%	.20'	.15'
10%	.25'	.20'
12%	.30'	.20'
14%	.35'	.25'
16%	.40'	.30'
18%	.45'	.35'
20%	.50'	.40'