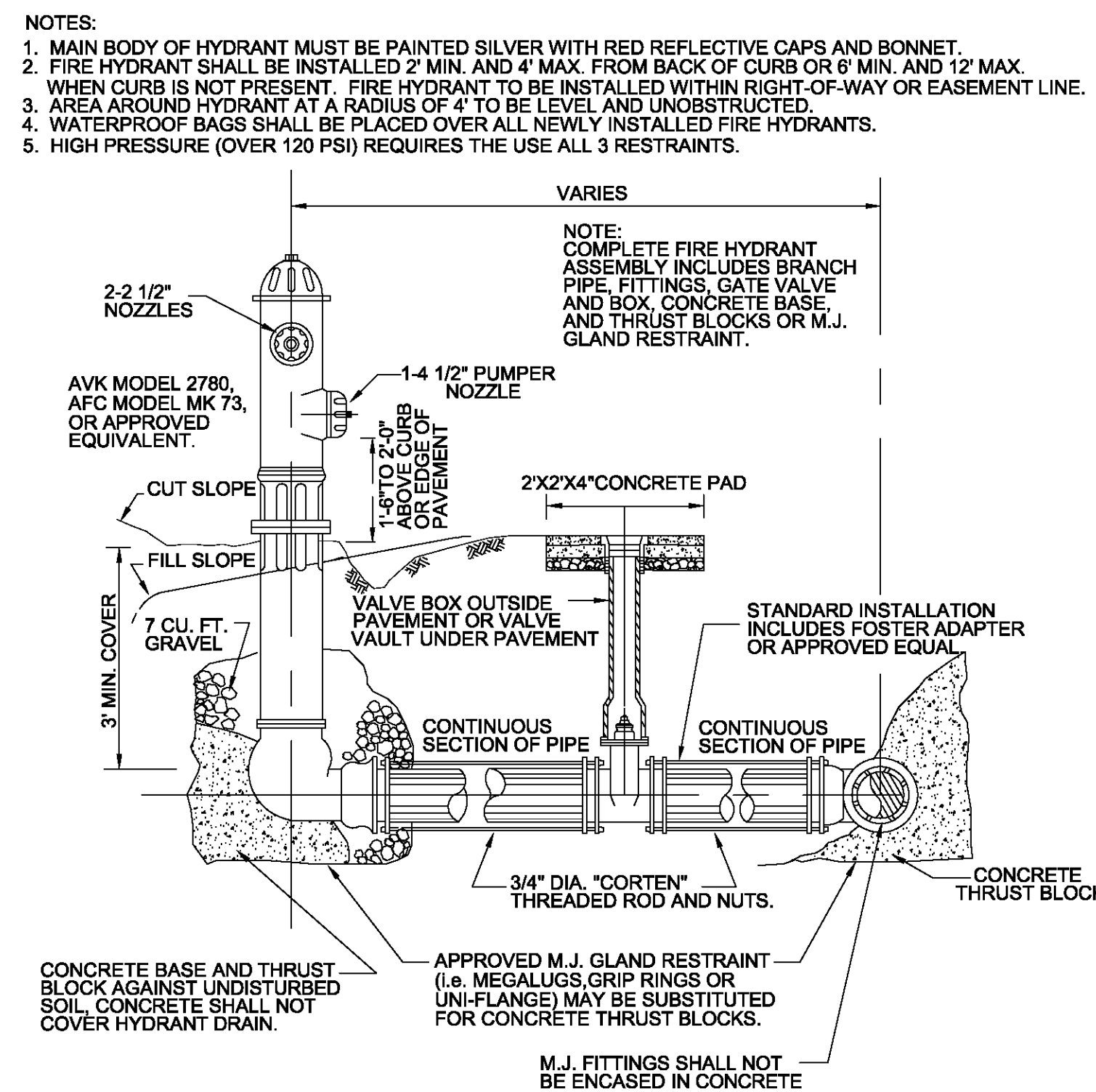
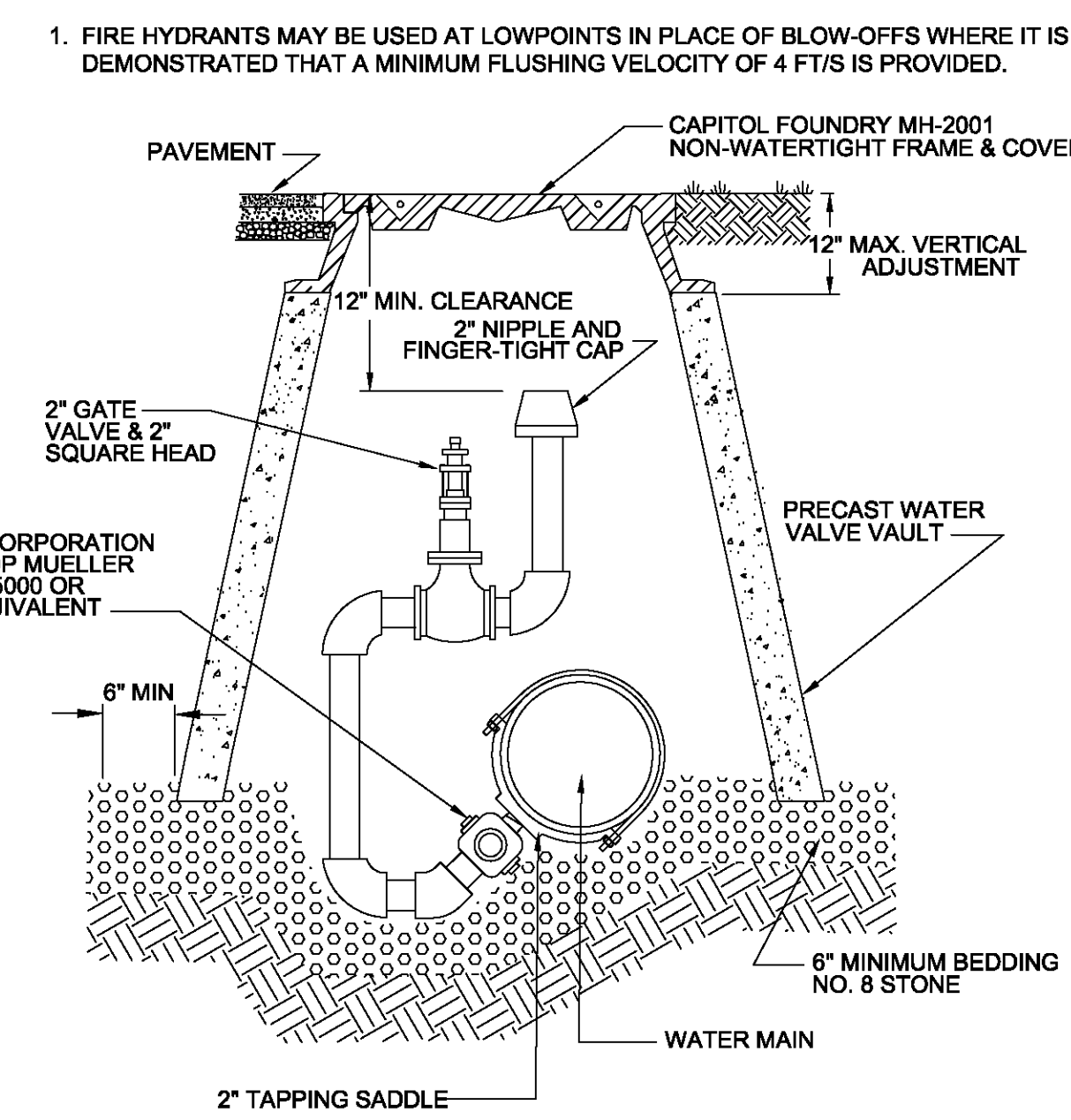
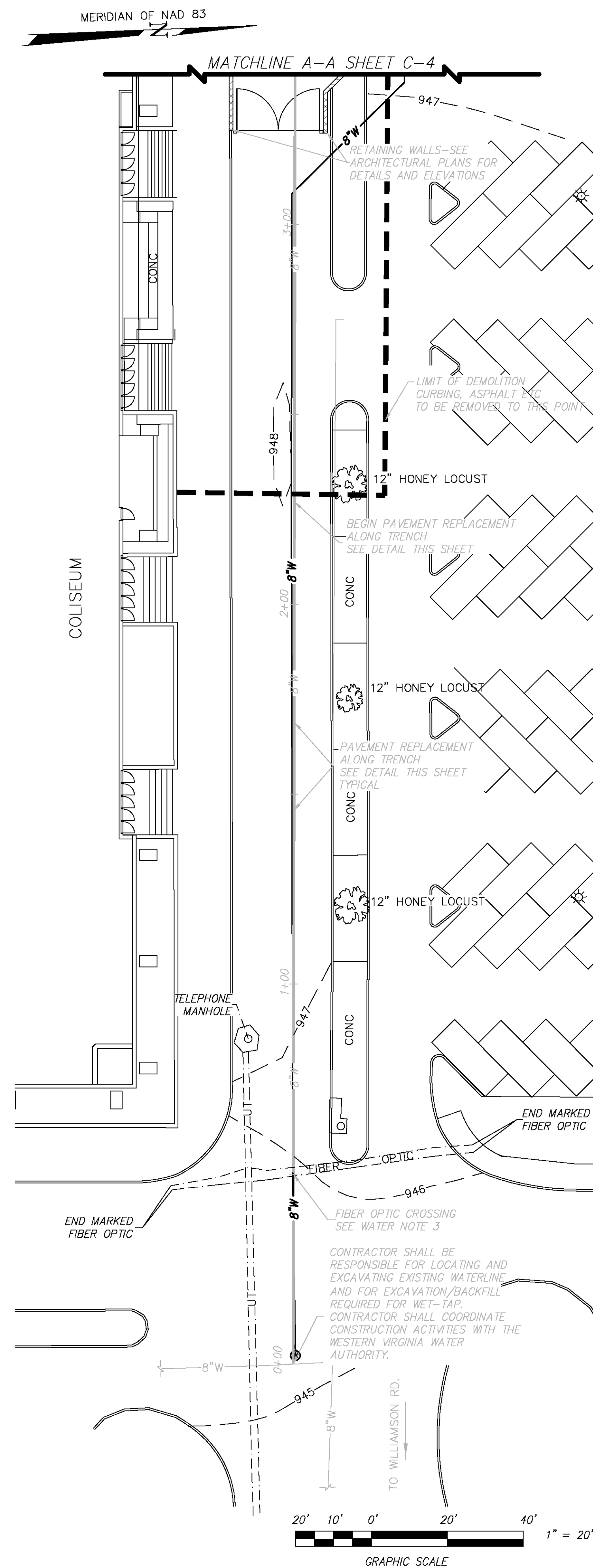


PAVEMENT REPLACEMENT DETAIL



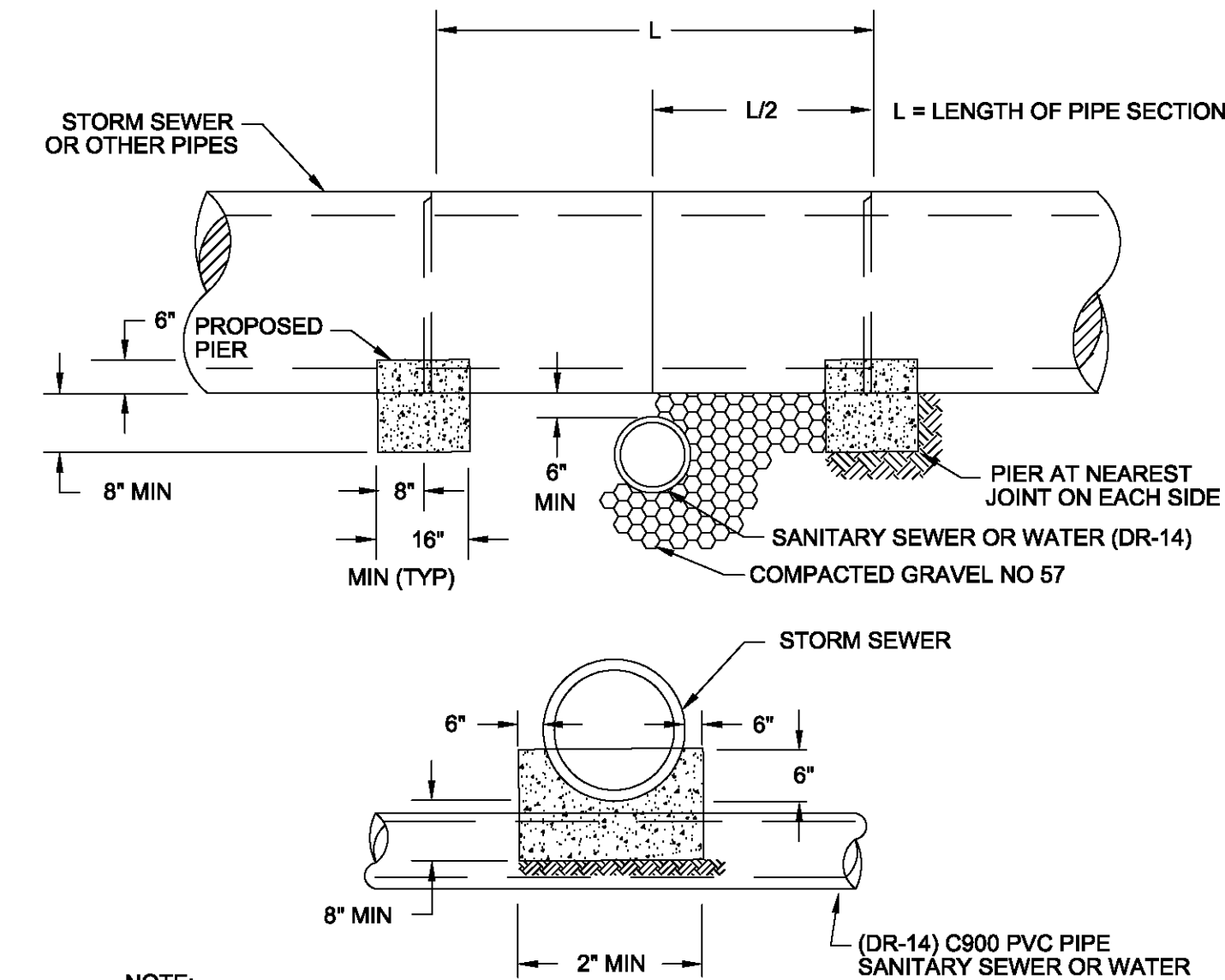
WWA FIRE HYDRANT ASSEMBLY W-18



WWA IN-LINE BLOW OFF ASSEMBLY W-11

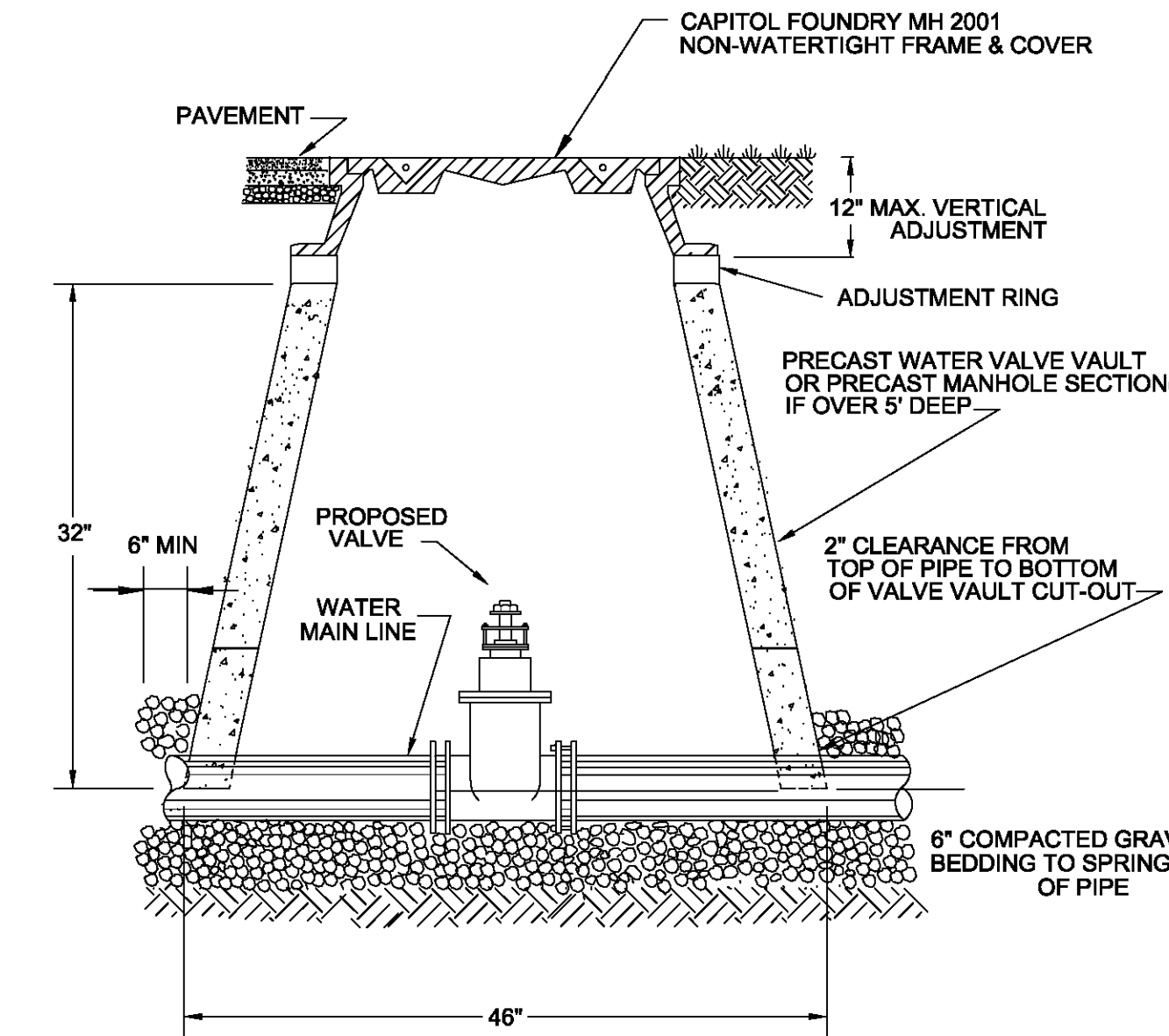
WATER NOTES

- CONTRACTOR SHALL VERIFY LOCATION AND DEPTH OF EXISTING WATER MAIN PRIOR TO BEGINNING CONSTRUCTION AND SHALL IMMEDIATELY NOTIFY THE ENGINEER IF FIELD CONDITIONS DIFFER FROM THOSE INDICATED ON THE PLANS.
- NEW 8" FIRE SERVICE AND 3" DOMESTIC SERVICE CONNECTIONS: THE WESTERN VIRGINIA WATER AUTHORITY TO SUPPLY AND INSTALL NEW METER AND VAULT AS INDICATED. G.C. SHALL EXCAVATE FOR VAULT INSTALLATION. G.C. SHALL EXTEND 8" FIRE AND 3" DOMESTIC WATER SERVICES TO BUILDING WITH MINIMUM 3' COVER. SEE PLUMBING PLANS FOR ADDITIONAL COORDINATION AND LOCATIONS.
- CONTRACTOR SHALL EXCAVATE EXISTING FIBER OPTIC CABLES AND VERIFY DEPTH PRIOR TO BEGINNING CONSTRUCTION. CONTRACTOR SHALL IMMEDIATELY NOTIFY THE ENGINEER IF FIELD CONDITIONS DIFFER FROM THOSE SHOWN ON THE PLANS.
- THE LOCATIONS OF THE EXISTING DUCT BANK AND SERVICE LINE SHOWN ARE FROM PLANS PROVIDED BY ROSSER INTERNATIONAL. THE CONTRACTOR SHALL VERIFY THE LOCATION AND DEPTH OF THE DUCT BANK AND SERVICE LINE PRIOR TO BEGINNING WATERLINE CONSTRUCTION AND IMMEDIATELY NOTIFY THE ENGINEER IF FIELD CONDITIONS DIFFER FROM THOSE SHOWN ON THE PLANS.
- THE LOCATION OF EXISTING UNDERGROUND UTILITIES INDICATED ON THE PLANS IS BASED ON A FIELD SURVEY, AVAILABLE RECORDS AND AS MARKED BY THE UTILITY LOCATOR SERVICE, UNLESS OTHERWISE INDICATED. THE CONTRACTOR IS RESPONSIBLE FOR CONTACTING MISS UTILITY OF VIRGINIA AT LEAST TWO (2) DAYS PRIOR TO BEGINNING CONSTRUCTION.

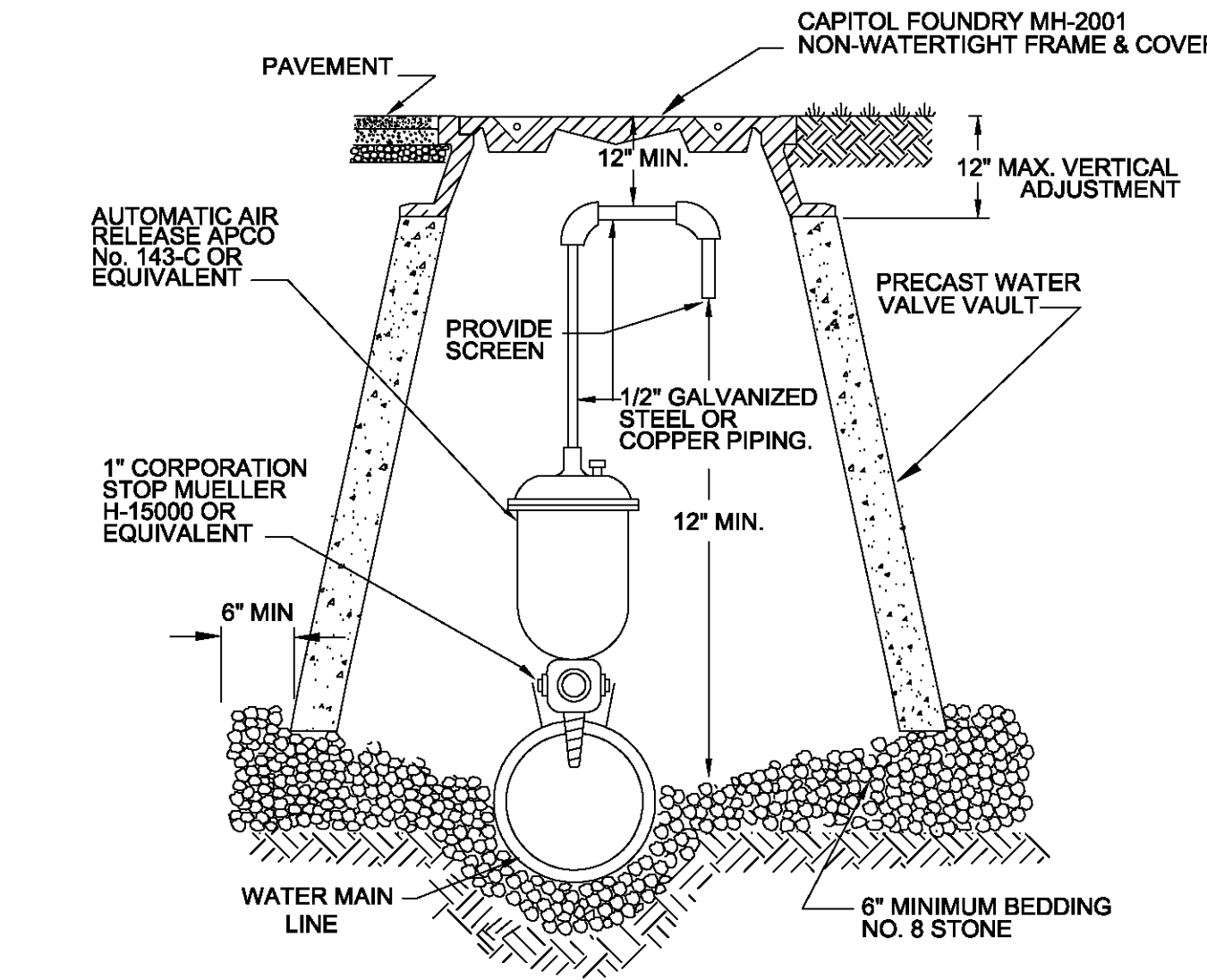


- NOTE:
- PIER REQUIRED WHEN STORM DRAIN OR OTHER PIPES CROSSES OVER THE OTHER UTILITY WITH A VERTICAL CLEARANCE OF LESS THAN 18".
 - PIER TO BE BUILT ON UNDISTURBED EARTH.
 - CONCRETE TO BE READY MIX, CLASS AS.

WWA CONCRETE PIER S-17



WWA WATER LINE VALVE INSTALLATION W-08



WWA AUTOMATIC AIR RELEASE ASSEMBLY W-12

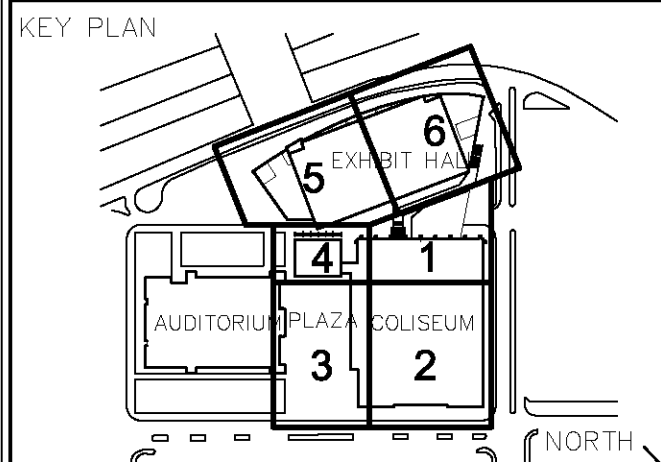
ROSSER

ROSSER INTERNATIONAL, INC.
524 West Peachtree Street, N.W.
Atlanta, Georgia 30308 0880
Architecture
Justice
Aviation
Sports
Interior
Planning
Landscape Architecture
Building Engineering
Civil Engineering
Program Management

CONSULTANTS
CWA
CALDWELL WHITE
ASSOCIATES
ENGINEERS / SURVEYORS / PLANNERS
4803 MELROSE AVENUE, N.W.
P.O. BOX 6890
ROANOKE, VIRGINIA 24017
(844) 368-3400
FAX: (540) 368-8708

STAMP

Roanoke Civic Center
Expansion and
Renovation-Phase II
CONSTRUCTION DOCUMENTS



PRINTING AND REVISIONS
01/23/06 WATERLINE AS-BUILTS

MARK DATE DESCRIPTION
ROSSER PROJECT NUMBER 02070.00...
DRAWN BY
CHECKED BY
DATE RELEASED FOR CONSTRUCTION 10/21/04
COPYRIGHT © 2004 Rosser International, Inc.
CADD SHEET FILE NAME
D:\Drawings\03-0131 Roanoke Civic Center Expansion\cadd\03-0131.dwg
SHEET TITLE
WATERLINE PLAN
& WWA DETAILS
SHEET NUMBER
C-4A
SHEET OF

RELEASED FOR CONSTRUCTION