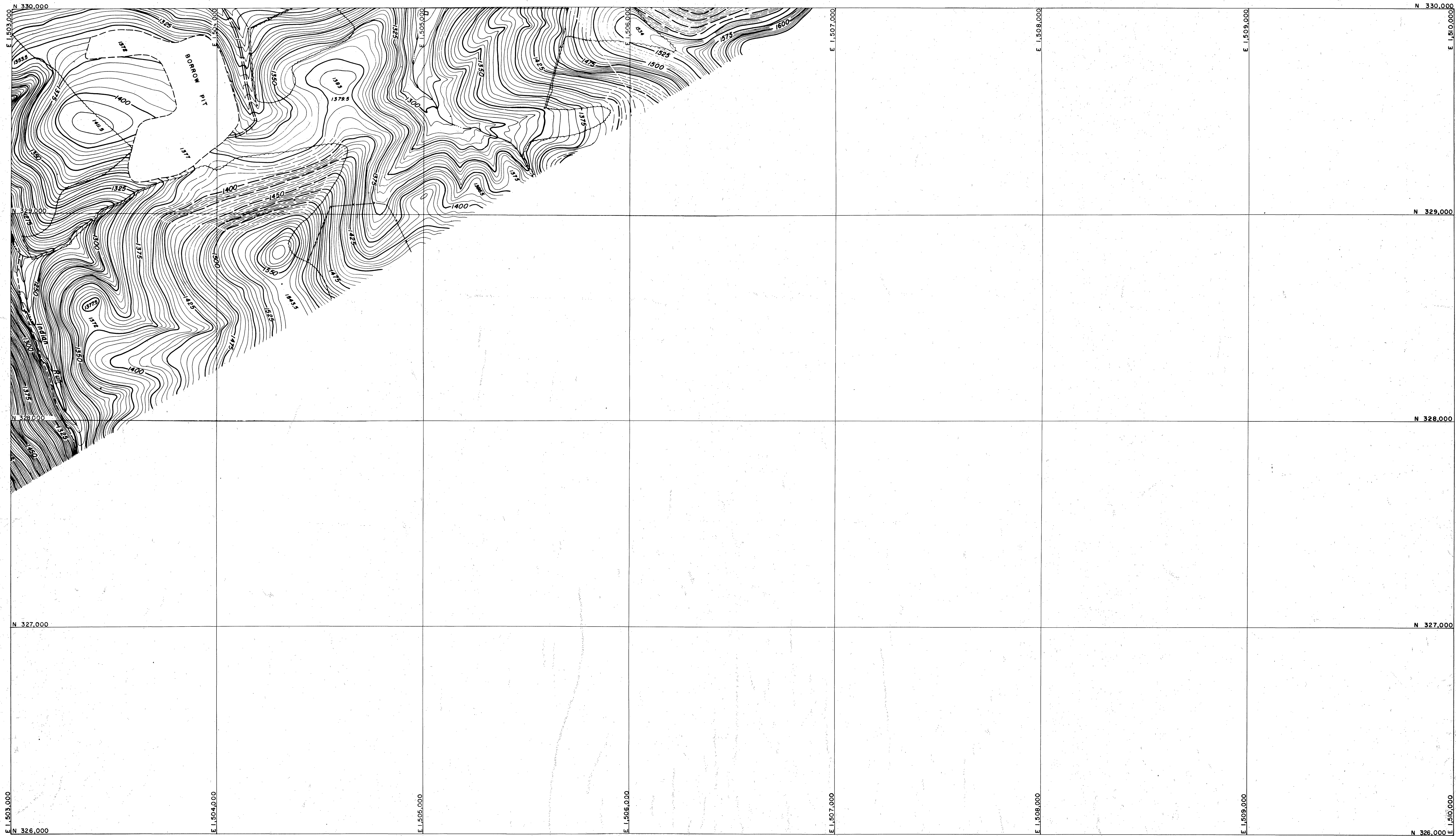
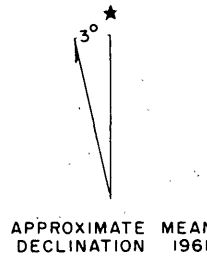


ROANOKE, VIRGINIA AND VICINITY



PREPARED BY
AMERICAN AIR SURVEYS, INC.
907 PENN AVENUE
PITTSBURGH, PA.
A 1087



THE PREPARATION OF THIS MAP WAS FINANCED IN PART
THROUGH AN URBAN PLANNING GRANT FROM THE HOUSING
AND HOME FINANCE AGENCY, UNDER THE PROVISIONS OF
SECTION 701 OF THE HOUSING ACT OF 1954, AS AMENDED.

SCALE 1" = 200'
CONTOUR INTERVAL 5'

1000' GRID BASED ON VIRGINIA STATE PLANE COORDINATE SYSTEM
SOUTH ZONE 1927 N.A. DATUM
VERTICAL DATUM - 1929 G.A.

DATE: SEPT., 1966

SHEET NO. MM02

PREPARED FOR
ROANOKE VALLEY
REGIONAL PLANNING & ECONOMIC DEVELOPMENT COMMISSION
ROANOKE, VIRGINIA

NOTE: TOPOGRAPHY TAKEN FROM VIRGINIA
STATE HIGHWAY DEPARTMENT SHEETS.