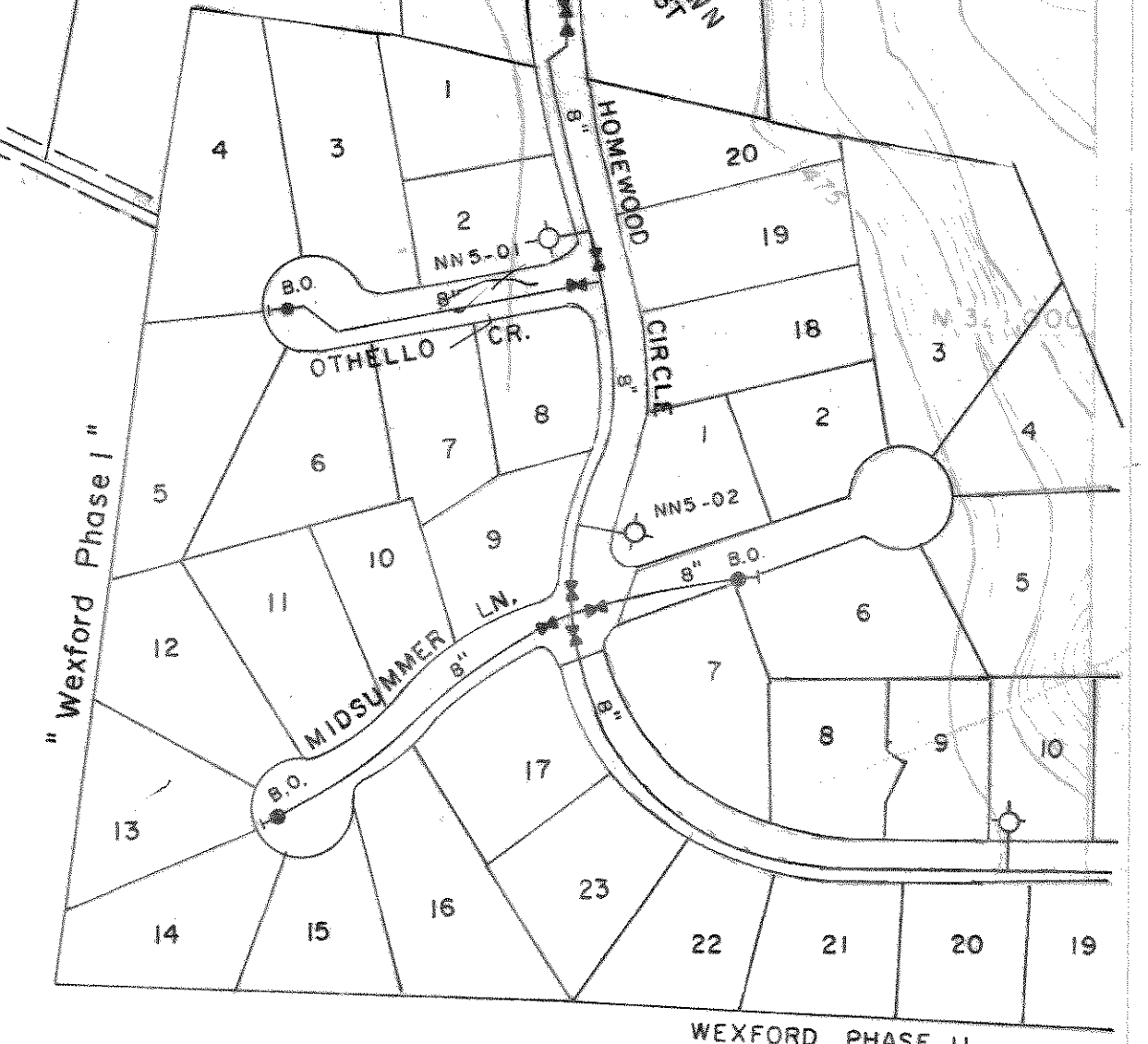
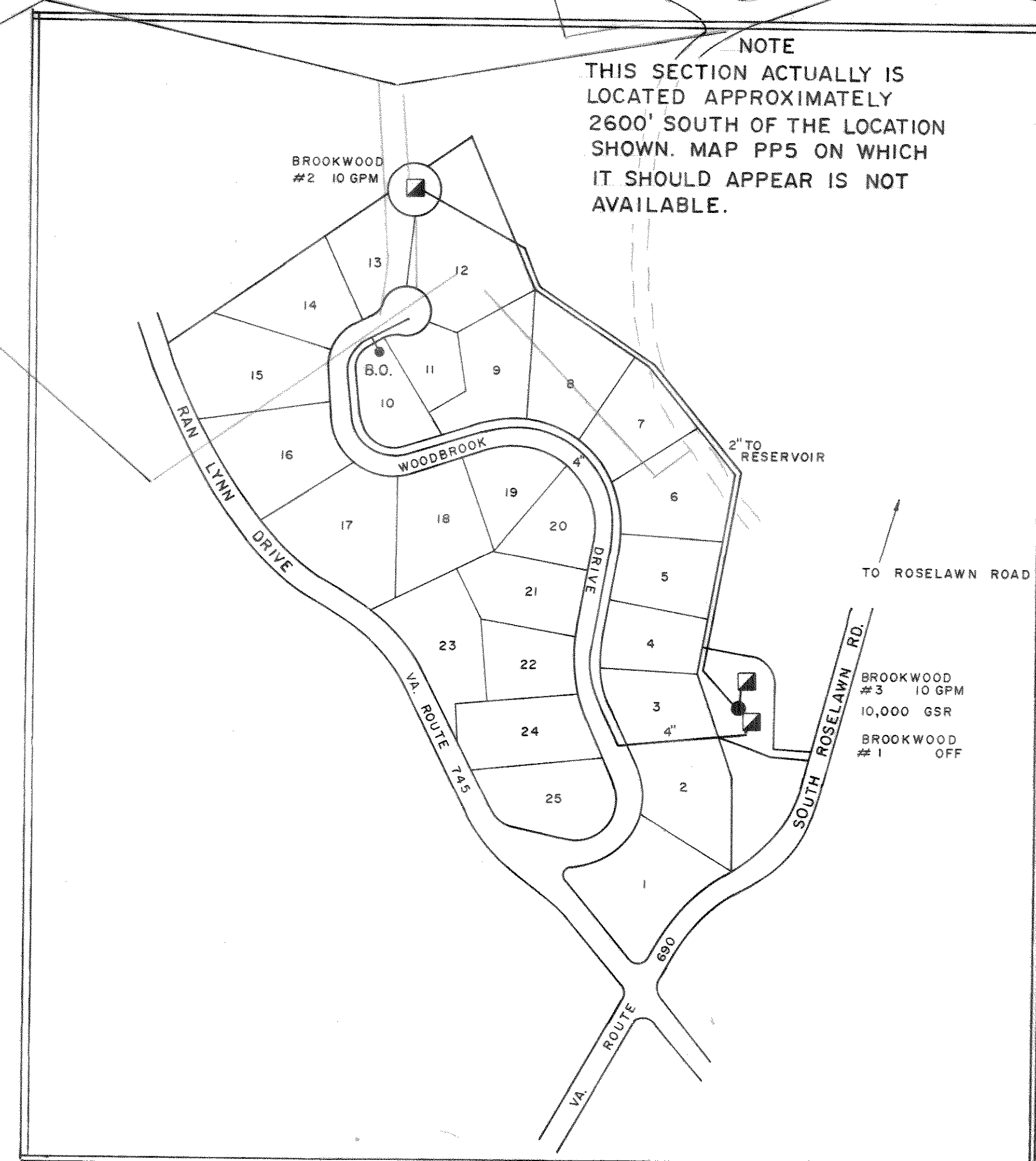
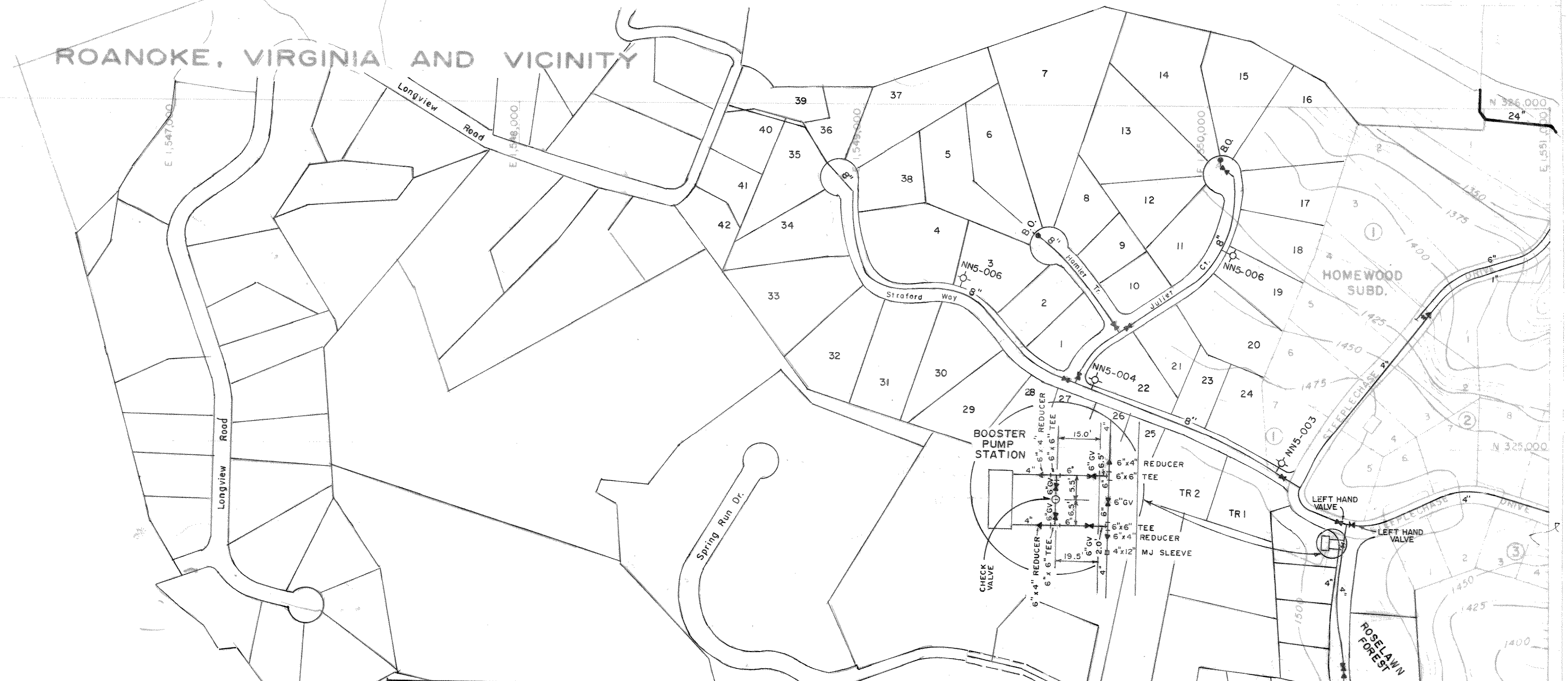


ROANOKE, VIRGINIA AND VICINITY



PREPARED BY
AMERICAN AIR SURVEYS, INC.
907 PENN AVENUE
PITTSBURGH, PA
A 394

THE PREPARATION OF THIS MAP WAS FINANCED IN PART
THROUGH AN URBAN PLANNING GRANT FROM THE HOUSING
AND HOME FINANCE AGENCY, UNDER THE PROVISIONS OF
SECTION 701 OF THE HOUSING ACT OF 1949, AS AMENDED

SCALE 1" = 200'
CONTOUR INTERVAL: 5'
1000' GRID BASED ON VIRGINIA STATE PLANE COORDINATE SYSTEM

REVISIONS		
DATE	DATE	DATE
30 JUN '83	6/18/94	7/18/97
1 JUN 87	10/27/94	
6/23/93	2/24/97	

DATE MARCH, 1961

SHEET NO. NN 5

LAST - NNS-02

PREPARED FOR
FIFTH PLANNING DISTRICT COMMISSION
ROANOKE, VIRGINIA

NOTE TOPOGRAPHY TAKEN FROM VIRGINIA
STATE HIGHWAY DEPARTMENT SHEETS