

1. REMOVE TREES, SHRUBS, GRASS, AND OTHER VEGETATION, IMPROVEMENTS OR OBSTRUCTIONS AS REQUIRED TO PERMIT INSTALLATION OF NEW CONSTRUCTION. REMOVE TREES AND OTHER VEGETATION, INCLUDING STUMPS AND ROOTS, COMPLETELY IN AREAS REQUIRED FOR SUBSEQUENT SEEDING. CUT OFF TREES AND STUMPS IN AREAS TO RECEIVE FILL MORE THAN THREE FEET IN DEPTH TO WITHIN EIGHT INCHES OF THE ORIGINAL GROUND SURFACE.
2. BARRICADE OPEN EXCAVATIONS OCCURRING AS PART OF THIS WORK AND OPERATE WARNING LIGHTS AS RECOMMENDED BY AUTHORITIES HAVING JURISDICTION.
3. CUT SURFACE UNDER PAVEMENTS TO COMPLY WITH CROSS SECTIONS, ELEVATIONS, AND GRADES AS INDICATED.
4. EXCAVATE TRENCHES TO UNIFORM WIDTH CONFORMING TO VDOT STANDARD PB-1 FOR STORM DRAINAGE PIPING. BACKFILL TRENCHES WITH CONTROLLED FILL.
5. PREVENT SURFACE WATER AND SUBSURFACE OF: GROUND WATER FROM FLOWING INTO EXCAVATIONS AND FROM FLOODING PROJECT SITE AND SURROUNDING AREA. DO NOT ALLOW WATER TO ACCUMULATE IN EXCAVATIONS. REMOVE WATER TO PREVENT SOFTENING OF FOUNDATION MATERIALS UNDERCUTTING FOOTINGS, AND SOIL CHANGES DETRIMENTAL TO STABILITY OF SUBGRADES AND FOUNDATIONS. CONVEY WATER REMOVED FROM EXCAVATIONS AND RAIN WATER TO COLLECTING OR RUNOFF AREAS. ESTABLISH AND MAINTAIN TEMPORARY DRAINAGE DITCHES AND OTHER DIVERSIONS OUTSIDE EXCAVATION LIMITS FOR THE STRUCTURE. DO NOT USE TRENCH EXCAVATIONS AS TEMPORARY DITCHES.
6. PROTECT EXCAVATED BOTTOMS OF ALL FOOTINGS & TRENCHES AGAINST FREEZING WHEN ATMOSPHERIC TEMPERATURE IS LESS THAN 35°F (1°C).
7. UNIFORMLY GRADE AREAS WITHIN LIMITS OF GR-01S INCLUDING ADJACENT TRANSITION AREAS. ADOPT FINISHED SURFACE WITHIN SPECIFIED TOLERANCES, COMPACT WITH UNIFORM LEVELS OR SLOPES BETWEEN POINTS WHERE ELEVATIONS ARE SHOWN, OR BETWEEN SUCH POINTS AND EXISTING GRADES. GRADE AREAS OUTSIDE TO BUILDING LINES TO ADEQUATELY AWAY FROM STRUCTURES AND TO PREVENT PONDING.
8. FINISH LAWN AREAS TO WITHIN ONE INCH ABOVE OR BELOW REQUIRED SUBGRADE ELEVATIONS. SHAPE SURFACE UNDER WALKS AND PAVEMENTS TO LINE GRADE AND CRACKS WITH WORK WITHIN ONE MORE THAN 1/2" ABOVE OR BELOW REQUIRED SUBGRADE ELEVATION.
9. PROTECT GRADED AREAS FROM TRAFFIC AND EROSION. REPAIR AREAS WHICH HAVE SETTLED, ERODED OR OTHERWISE BEEN DAMAGED DUE TO CONSTRUCTION ACTIVITIES AT NO ADDITIONAL COST TO OWNER.
10. PLACE ALL FILL AND BACKFILL AS CONTROLLED FILL AS FOLLOWS:
  - a. ESTABLISH SUITABLE SUBGRADE CONDITION PRIOR TO PLACING FILL BY PROOFROLLING, UNDERCUTTING AND COMPACTING AS NECESSARY.
  - b. PLACE FILL MATERIALS IN LAYERS NOT MORE THAN 8" IN LOOSE DEPTH FOR GRAVELY COMPOSITION EQUIVALENT AND NOT MORE THAN 4" FOR SAND/TAMERS.
  - c. PRIOR TO COMPACTING, PROVIDE MOISTURE CONTENT TO WITHIN 3% OF OPTIMUM BY MOISTENING OR ABRASIVE E/C CONTENT. DO NOT PLACE FILL MATERIAL ON SURFACES WHICH ARE MUDDY, FROZEN OR CONTAIN FROST OR ICE.
  - d. COMPACT SOIL TO NOT LESS THAN THE FOLLOWING PERCENTAGES OF MAXIMUM DRY DENSITY IN ACCORDANCE WITH ASTM D 698 (STANDARD PROCTOR):
    - i. 95% UNDER PAVEMENT
    - ii. 85% UNDER LAWN OR UNPAVED AREAS
11. SPREAD TOPSOIL TO A DEPTH OF 4" OVER ALL DISTURBED AREAS NOT RECEIVING WALKS OR PAVEMENTS INCLUDING TRENCHES. SPREAD TOPSOIL TO A DEPTH OF 4" FOLLOWING PLACEMENT OF TOPSOIL SKID THE ENTIRE TOPSOILED AREA AND RAKE FREE OF STONES AND DEBRIS OVER 1/2" IN ANY DIMENSION. PROVIDE A FINISHED SURFACE FREE OF DEPRESSIONS OR HIGH SPOTS. SEED IMMEDIATELY.
12. OWNER (CONTRACTOR) SHALL EMPLOY QUALIFIED SOILS TESTING LABORATORY TO PERFORM EARTHWORK OPERATIONS. NOTIFY LABORATORY PRIOR TO PERFORMING EARTHWORK OPERATIONS.

**③ STORM MANHOLE**  
TOP = 1154.63  
INV IN = 1152.40  
INV OUT = 1152.30

**① 25.0 LF 15" RCP @ 0.50%**  
INV IN = 1152.53  
INV OUT = 1152.40

**② STORM MANHOLE**  
TOP = 1155.25

**③ 111.00 LF 15" RCP @ 2.6%**  
INV IN = 1155.50  
INV OUT = 1152.63

**④ 30 LF 15" RCP @ 1.2%**  
INV IN = 1153.00  
INV OUT = 1152.63



SCALE: HORIZONTAL 1" = 30'  
VERTICAL 1" = 5'

1. PROVIDE CONSTRUCTION MATERIALS AND METHODS IN ACCORDANCE WITH ALL STATE AND LOCAL REGULATIONS, INCLUDING THE STANDARDS AND SPECIFICATIONS OF THE "HARVEST EROSION AND SEDIMENT CONTROL HANDBOOK", LATEST EDITION. REFER TO THE HANDBOOK FOR THE DETAILED LIST OF EROSION CONTROL DEVICES.
2. SCHEDULE A PRECONSTRUCTION MEETING INVOLVING THE ENGINEER, DEVELOPER'S REPRESENTATIVE AND SELECTED CONTRACTOR ON SITE PRIOR TO BEGINNING CONSTRUCTION.
3. ADHERE TO THE EROSION AND SEDIMENT CONTROL NARRATIVE AS PART OF THIS CONTRACT. INSTALL EROSION CONTROL DEVICES AS PER THE NARRATIVE/PLAN.
4. NOTIFY THE PROJECT ENGINEER WHEN THE LOCAL GOVERNING OFFICIAL HAS INSPECTED AND APPROVED ALL IN-PLACE EROSION AND SEDIMENT CONTROL DEVICES. SLOPE PROTECTION BY LOGS SHALL BE APPLIED TO PREPARED TO LAND DISTURBANCE.
5. NOTIFY THE PROJECT ENGINEER 24 HOURS IN ADVANCE OF BEGINNING CLEARING AND GRADING OPERATIONS.
6. DISPOSE OF EXCESS EXCAVATION, AS WELL AS ALL ORGANIC WASTE AND DEBRIS, OFF SITE.
7. SEED AND MULCH OR TEMPORARILY STABILIZE ALL DENUDED AREAS WITHIN SEVEN DAYS OF DISTURBANCE. SEED TRENCHES IMMEDIATELY FOLLOWING BACKFILL.
8. REMOVE ALL DEMOLISHED MATERIAL FROM THE PROJECT SITE AND DISPOSE OF IN AN ACCEPTABLE LOCATION.
9. REINSTALL ANY STRUCTURE(S) RELOCATED AND/OR REMOVED DURING THE INSTALLATION OF THE PROPOSED IMPROVEMENTS AT NO ADDITIONAL COST TO OWNER. FILL EXISTING DEPRESSIONS.
10. INSPECT ESC MEASURES WEEKLY AND AFTER EACH RAINFALL TO INSURE PROPER FUNCTIONING.
11. AVOID CONSTRUCTION TRAFFIC IN NATURAL STREAMS AND DRAINAGE WAYS WHENEVER POSSIBLE.
12. REMOVE ALL SILT FROM STREAMS AND DRAINAGE WAYS PRIOR TO BOND RELEASE.
13. THE LOCATION OF ALL FILL OR BORROW AREAS ASSOCIATED WITH THE CONSTRUCTION PROJECT WILL BE PROVIDED TO ROCKWELL COUNTY COMMUNITY DEVELOPMENT, AN EROSION SEDIMENT CONTROL PLAN OR MEASURES MAY BE REQUIRED FOR THESE AREAS.

EROSION AND SEDIMENT CONTROL NARRATIVE ON SHEET 5.

- 1) THE PROPERTY WILL BE DEVELOPED IN SUBSTANTIAL CONFORMITY WITH THE CONCEPT PLAN DATED JANUARY 14, 2004, AND THE ARCHITECTURAL RENDERING, DATED JANUARY 30, 2004, BOTH PREPARED BY RIFE AND WOOD ARCHITECTS.
- 2) USE OF THE PROPERTY WILL BE LIMITED TO ACTIVITIES OF OR SPONSORED BY THE ROANOKE COUNCIL OF GARDEN CLUBS, INCORPORATED INCLUDING OFFICES, MEETINGS AND RENTAL OF THE BUILDING.
- 3) APPLICABLE COLONIAL AVENUE CORRIDOR DESIGN GUIDELINES SHALL BE IN EFFECT WITH THE WORD "SHALL" REPLACING THE WORD "SHOULD" AS DETERMINED DURING THE SITE PLAN REVIEW PROCESS.
- 4) THE PROPOSED BUILDING SHALL BE LIMITED TO 6,000 SQ. FT. OF GROSS FLOOR AREA AND 26' IN HEIGHT
- 5) EXTERIOR BUILDING MATERIAL SHALL BE OF BRICK AND WOOD.
- 6) PARKING TO THE REAR OF THE BUILDING SHALL NOT EXCEED SIXTY SPACES AND NO PARKING SHALL BE CONSTRUCTED IN FRONT OF THE BUILDING.
- 7) MONUMENT STYLE SIGNAGE AT THE ENTRANCE SHALL NOT EXCEED 35 SQUARE FEET. TOTAL SIGNAGE SHALL NOT EXCEED 70 SQUARE FEET. TEMPORARY SIGNAGE SHALL BE LIMITED TO ACTIVITIES DIRECTED TO THE ROANOKE COUNTY OF GARDEN CLUBS, INCORPORATED.



SCALE: HORIZONTAL 1" = 30'  
VERTICAL 1" = 5'

ELEV = 1156.58

2:1

ELEV = 1155.08

2:1

8'

EARTH SPILLWAY DETAIL

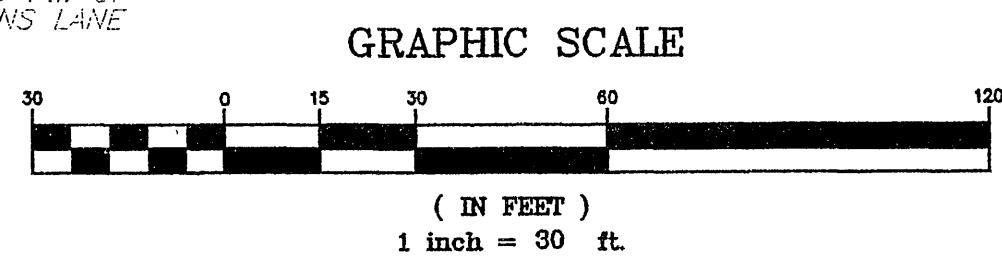
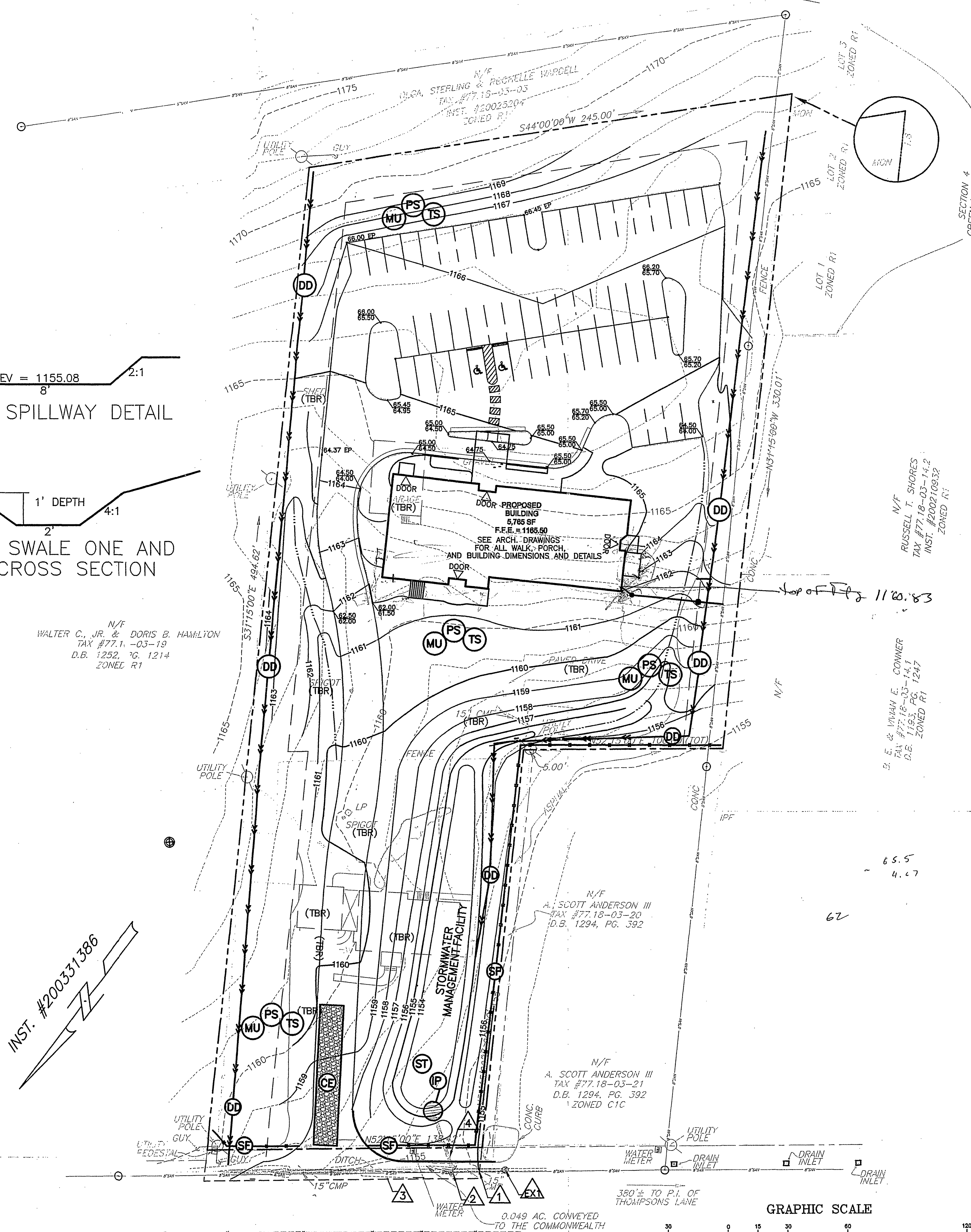
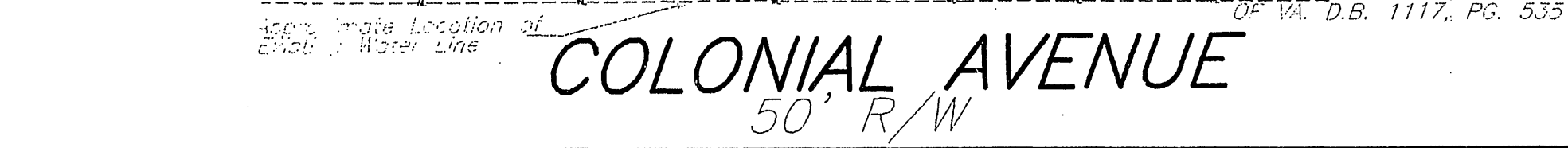
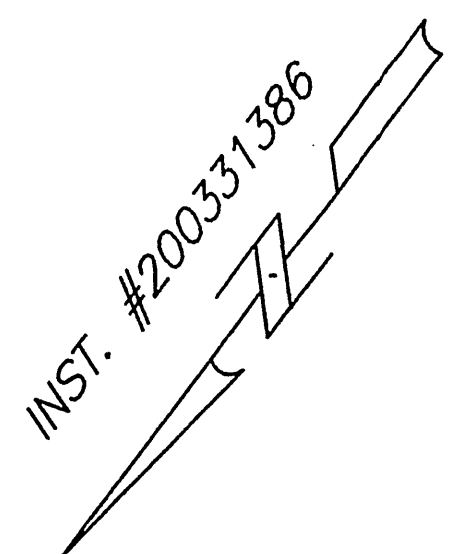
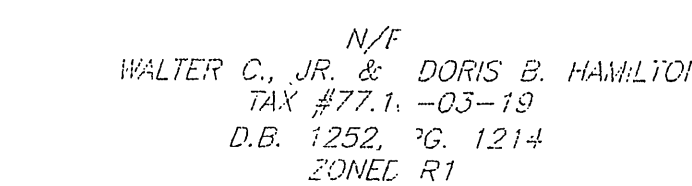
1' DEPTH

4:1

2'

4:1

GRASS SWALE ONE AND TWO CROSS SECTION



1557 Commerce Road  
Suite 201  
Verona, Virginia 24482  
Phone: 540/248-3220  
FAX: 540/248-3221

PROANOKE GARDENS CLUB  
Grading and Erosion Control Plan  
CAVE SPRING MAGISTERIAL DISTRICT

DRAWN BY: CHW  
DESIGNED BY: SMH  
CHECKED BY: BJC  
DATE: 7-26-04  
REVISIONS:

SCALE: 1" = 30'

SHEET NO.

3 OF 5

JOB NO.

R0400068.00