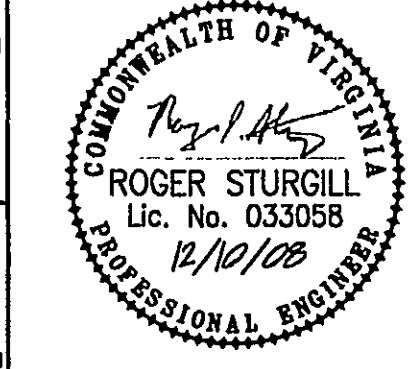
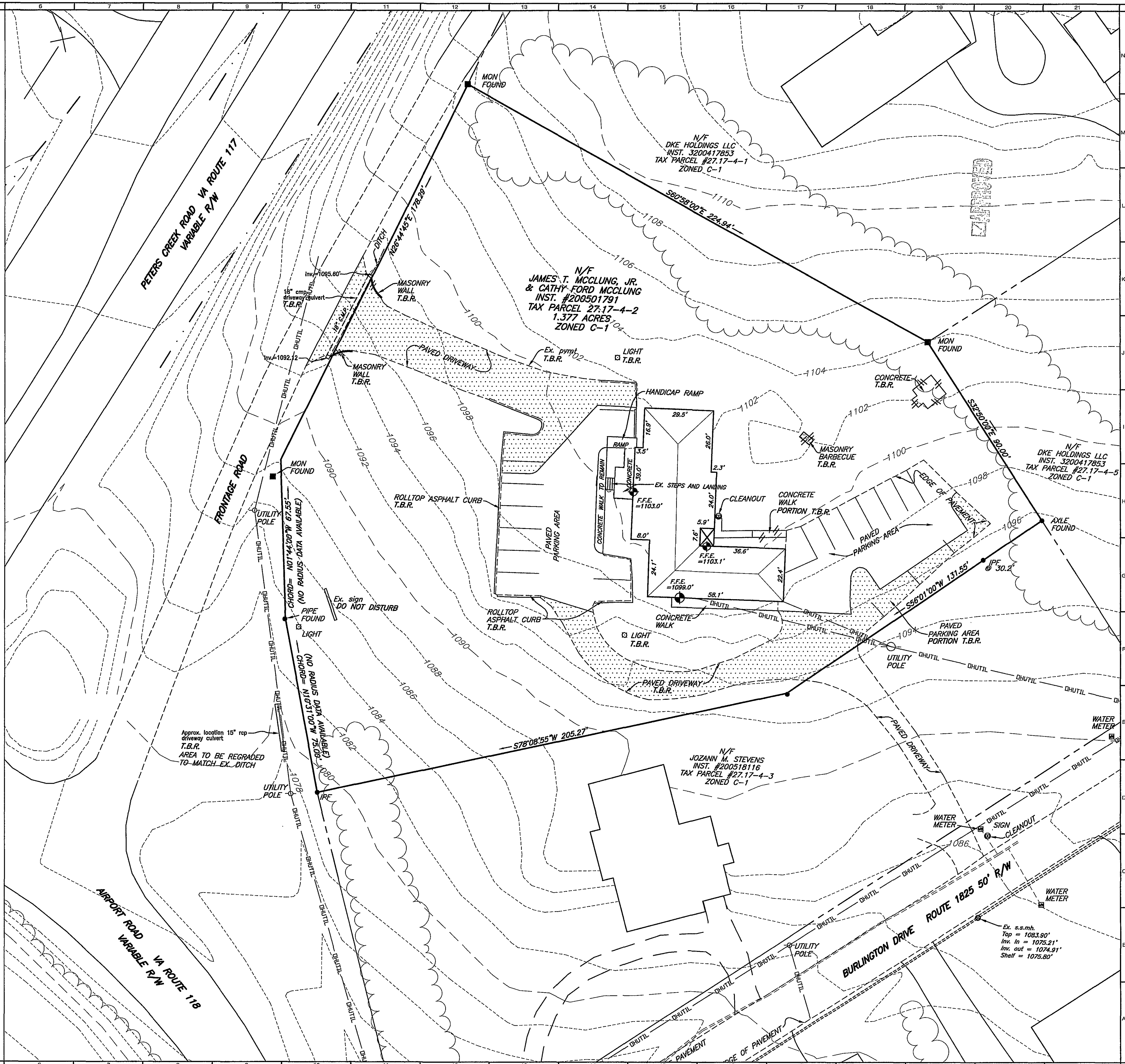
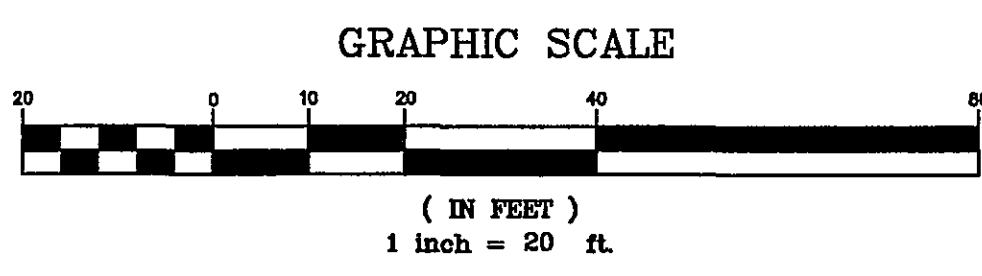


DEMOLITION NOTES

1. DEMOLITION SHALL INCLUDE, UNLESS OTHERWISE NOTED ON DRAWINGS, REMOVAL OF EXISTING OBJECTS OR IMPROVEMENTS, WHETHER INDICATED ON THE DRAWINGS OR NOT, THAT WOULD IN THE OPINION OF THE OWNER, PREVENT OR INTERFERE WITH THE PROGRESS OR COMPLETION OF THE PROPOSED WORK.
2. PERMITS, FEES AND LICENSES SHALL BE SECURED AND PAID FOR BY THE CONTRACTOR, INCLUDING DISPOSAL CHARGES AS REQUIRED.
3. WORK SHALL COMPLY WITH THE REQUIREMENTS OF THE GOVERNING AUTHORITIES IN DEMOLITION OF EXISTING PAVEMENT, CURBS AND GUTTERS, DRAINAGE STRUCTURES AND UTILITIES AS MAY BE REQUIRED.
4. ALL EXISTING UTILITIES TO ANY BUILDINGS SHOWN TO BE RAZED SHALL BE DISCONNECTED AND PLUGGED OR CAPPED AS REQUIRED BY THE COUNTY.
5. CONTRACTOR SHALL SAW-CUT ALL JOINTS WHERE EXISTING CURBING, PAVEMENT AND SIDEWALK IS TO BE DEMOLISHED AND NEW CONSTRUCTION JOINS THE EXISTING.
6. ALL EXISTING CURBING, CONCRETE SIDEWALK, ENTRANCES, BUILDING FOUNDATIONS AND TREES AND BRUSH THAT ARE DEMOLISHED SHALL BE REMOVED FROM THE SITE AND DISPOSED OF BY THE CONTRACTOR, BUILDING DEBRIS, ETC. SHALL NOT BE USED AS FILL MATERIAL ON THE SITE.
7. MAKE ARRANGEMENTS, BEFORE INITIATING DEMOLITION, FOR RELOCATING, DISCONNECTING, REROUTING, ABANDONING, OR SIMILAR ACTION AS MAY BE REQUIRED RELATIVE TO UTILITIES AND OTHER UNDERGROUND PIPING, TO PERMIT WORK TO PROCEED WITHOUT DELAY. ARRANGEMENTS SHALL BE MADE IN ACCORDANCE WITH REGULATIONS OF AUTHORITIES OF UTILITIES MENTIONED, SUCH AS OVERHEAD AND UNDERGROUND POWER AND TELEPHONE LINES AND EQUIPMENT, GAS PIPING, STORM SEWERS, SANITARY SEWERS, OR WATER PIPING. CONTRACTOR SHALL NOT USE WATER WHEN IT MAY CREATE HAZARDOUS OR OBJECTIONABLE CONDITIONS, SUCH AS ICE, FLOODING AND/OR POLLUTION.
8. CONDUCT OPERATIONS TO PREVENT DAMAGE TO ADJACENT BUILDINGS, STRUCTURES, OTHER FACILITIES, OR INJURY TO PERSONS.
9. PROMPTLY REPAIR DAMAGES CAUSED TO ADJACENT FACILITIES BY DEMOLITION OPERATIONS AT NO COST TO THE OWNER.
10. MAINTAIN EXISTING UTILITIES INDICATED TO REMAIN, KEEP IN SERVICE, AND PROTECT AGAINST DAMAGE DURING DEMOLITION OPERATIONS. PREVENT INTERRUPTION OF EXISTING UTILITIES SERVING OCCUPIED OR USED FACILITIES, EXCEPT WHEN AUTHORIZED IN WRITING BY AUTHORITIES HAVING JURISDICTION. PROVIDE TEMPORARY SERVICES DURING INTERRUPTIONS TO EXISTING UTILITIES AS ACCEPTABLE TO GOVERNING AUTHORITIES.
11. USE WATER SPRINKLING AND OTHER SUITABLE METHODS TO LIMIT DUST AND DIRT RISING AND SCATTERING IN AIR TO LOWEST PRACTICAL LEVEL.
12. COMPLY WITH GOVERNING REGULATIONS PERTAINING TO ENVIRONMENTAL PROTECTION.
13. G.C. TO COORDINATE CONSTRUCTION SCHEDULE WITH OWNER PRIOR TO COMMENCEMENT OF WORK. ACCESS AND PARKING FOR EXISTING BUILDING TO BE MAINTAINED TO THE MAXIMUM EXTENT POSSIBLE.

EX. PAVEMENT TO BE REMOVED

TO BE REMOVED



REFLECTING TOMORROW  
www.balzer.cc  
PLANNERS ARCHITECTS  
ENGINEERS SURVEYORS

1208 Corporate Circle  
Roanoke, Virginia 24018  
Phone: 540/772-9580  
FAX: 540/772-8050

15871 City View Drive  
Suite 200  
Midlothian, Virginia 23113  
Phone: 804/794-0571  
FAX: 804/794-2635

880 Technology Park Drive  
Suite 200  
Glen Allen, Virginia 23059  
Phone: 804/653-0132  
FAX: 804/653-0133

448 Poppers Ferry Road, NW  
Christiansburg, Virginia 24073  
Phone: 804/581-4280  
FAX: 804/581-4291

1551 Commerce Road  
Suite 401  
Verona, Virginia 24482  
Phone: 804/648-3220  
FAX: 804/648-3221

ROANOKE ORAL SURGERY  
EXISTING CONDITIONS & DEMO PLAN  
HOLLINS DISTRICT  
ROANOKE COUNTY, VIRGINIA

DRAWN BY: CPB  
DESIGNED BY: CPB  
CHECKED BY: SMH  
DATE: 10-14-2008  
REVISIONS:  
11-19-2008  
12-10-2008

SCALE: 1"=20'  
SHEET NO.  
C-2  
JOB NO.  
R0800339.00