

DEMOLITION NOTE

- The site currently contains a structure and associated parking. All existing improvements are to be demolished by others except usable sidewalks along Albemarle and Jefferson.

PROPERTY NOTE

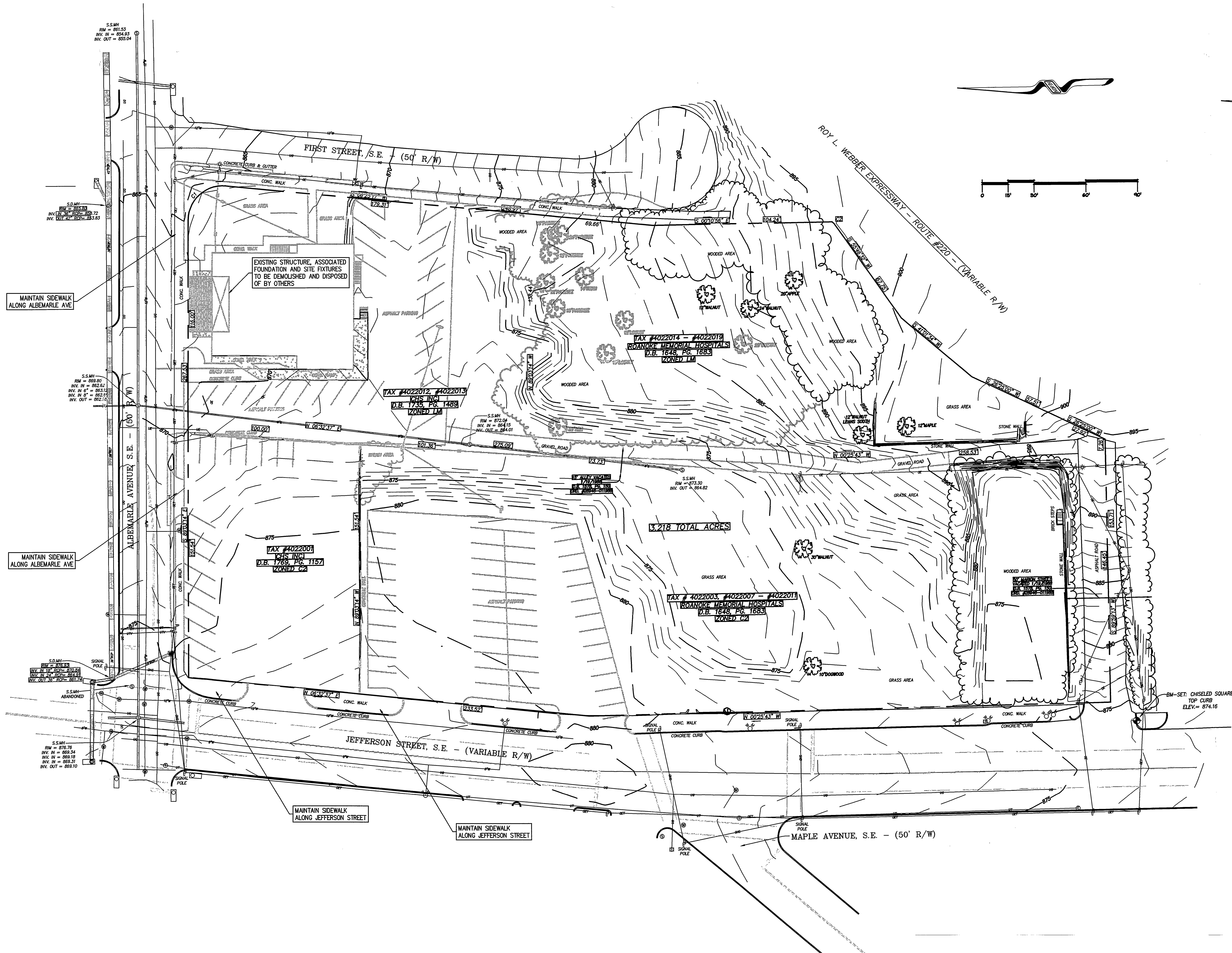
- Parcels shown are to be combined by the owner. At the time of this printing the parcels have not yet been combined.

GENERAL NOTES

- Parking lot dimensions are from face of curb to face of curb unless noted otherwise.
- It shall be the responsibility of the subcontractors to notify all applicable utility companies who may be affected by the proposed work. The subcontractor shall make every effort to protect existing utility lines and shall repair any damages at their own expense. The subcontractors shall also coordinate their activities with other subcontractors to ensure compliance with the project schedule.
- All site concrete shall have a minimum 28 day compressive strength of 4000 psi, a slump of 4", on air content of 6% and a maximum water to cement ratio of 0.48.
- Spot elevations denote pavement surface unless otherwise noted.

SITE LEGEND

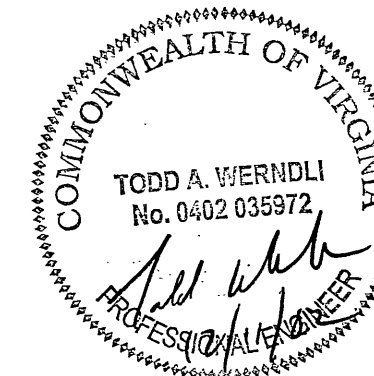
EXISTING	
Contours	100.0
Spot elevations	100.0
Trees to be saved	
Trees to be removed	
Storm sewer main / lateral	12" ST
Sanitary sewer main / lateral	12" S
Water main / lateral	4" W
Gas main / lateral	G
Overhead Electrical service	OH/ E
Underground electric service	UG/ E
Overhead Telephone service	OH/ T
Underground Telephone service	UG/ T
PROPOSED:	
Contours	100
Spot elevations	100.0
Trees	
Shrubs	
Storm sewer main / lateral	12" ST
Sanitary sewer main / lateral	12" SA
Water main / lateral	4" W
Gas main / lateral	G
Overhead Electrical service	OH/ E
Underground Electric service	UG/ E
Overhead Telephone service	OH/ T
Underground Telephone service	UG/ T
Cable Television service	CTV
MISCELLANEOUS:	
Property line	N 90° 0' 0" E 11.32'
Setback line	11.32'
Silt fence	SF
Site Phasing line	---
Water line	---
100 Yr. Flood line	---
Contract Limit line	---
LANDSCAPING	
Construction fence	X - X - X
Irrigation Area Zone line	---
Landscape Edging line	---
Mowing line	---
Planting code symbol (Base Bid Plant)	
Planting code symbol (Add Alternate Plant)	
SYMBOLS	
Existing Parking lights	
Proposed Parking lights	
Soil boring location & Number	B1
EXISTING	
	Precast flared end section
	Concrete Headwall
	Storm Catchbasin
	Sanitary & Storm Manhole
	Storm gooseneck
	Cleanout
	Storm inlet protection
	Fire Hydrant
	Siamese Connection
	Water Valve
	Water Meter
	Gas Meter
	Power pole
	Handicap signs
	Flag pole
	Concrete Bollard
	Conc. filled Pipe Bollard
	Light Bollard
	Flood light
	Concrete pavement Slope Arrow



Marshall Erdman & Associates

6550 Cinder Bed Road Suite 1300
P.O. Box 8550
Newington, Virginia 22122-8550
Phone: (703) 550-5605

ROANOKE SURGERY CENTER



Document Release
11-05-02 EARLY SITE
11-14-02 BID SET
12-11-02 REVISED SITE

Dr: twerndl Chk: taschenbrenner
Sheet Name

**EXISTING
SITE
PLAN**

Scale: 1" = 30'

Sheet Number

C.1

ROANOKE, VIRGINIA
W5220